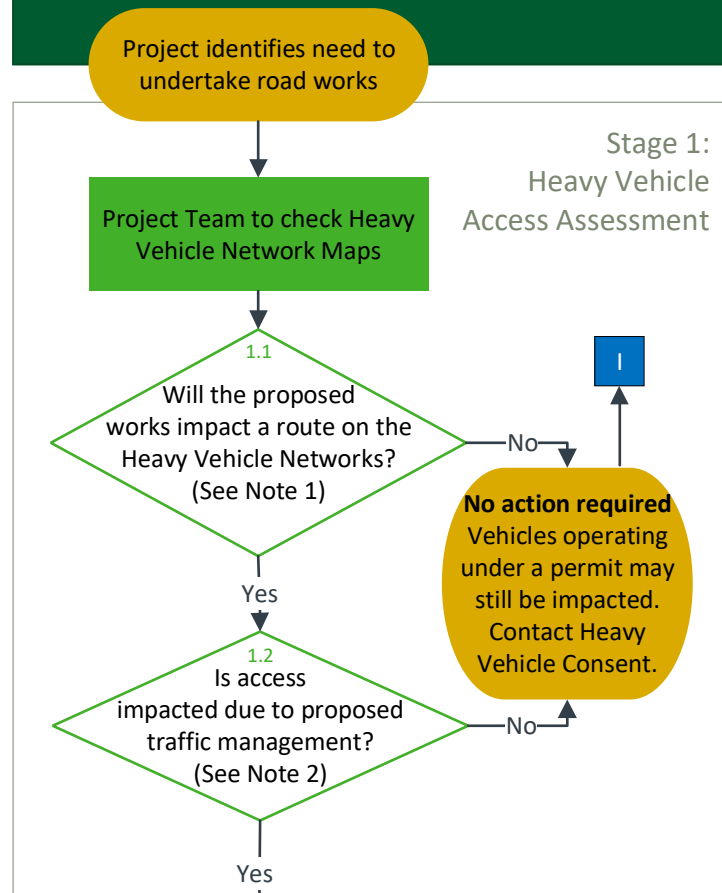


Construction Impacts on Heavy Vehicle Access (version 3.2)



Involved teams and services

Heavy Vehicle Productivity
Provide advice in regards to appropriate reference vehicles for geometry checks and review swept path assessments.

Asset Services – Bridge Assessment
Undertake assessments of VicRoads' structures for different heavy vehicle combinations to ensure the integrity of assets is maintained

Heavy Vehicle Networks
Update and maintain Heavy Vehicle Network Maps. Able to provide assistance when considering detour routes

Comms
Ensures industry and stakeholders are advised of changes. E.g. changes to routes and Heavy Vehicle Network Maps

Asset Services - Heavy Vehicle Consent
Able to provide information regarding approved and pending permit applications (beyond what is currently mapped) for O.D. loads.

Contact
To contact any of the listed teams, please send your enquiry to - hv.design@roads.vic.gov.au

Legend

- I** Inform
- C** Comms required
- Process**
- Action**
- Start/End Process**

Note 1: Heavy Vehicle Network Maps

Heavy Vehicle Network Maps are published on VicRoads' website: <https://www.vicroads.vic.gov.au/business-and-industry/heavy-vehicle-industry/heavy-vehicle-map-networks-in-victoria>

Key maps to consider:

- Oversize & Overmass (OSOM)
- Oversize & Overmass Agricultural Vehicles
- Emergency & Emergency Preparedness Maps
- HPFV B-Double – Quad-Tri and Quad-Quad
- HPFV A-Doubles (all 3 maps)
- B-Doubles

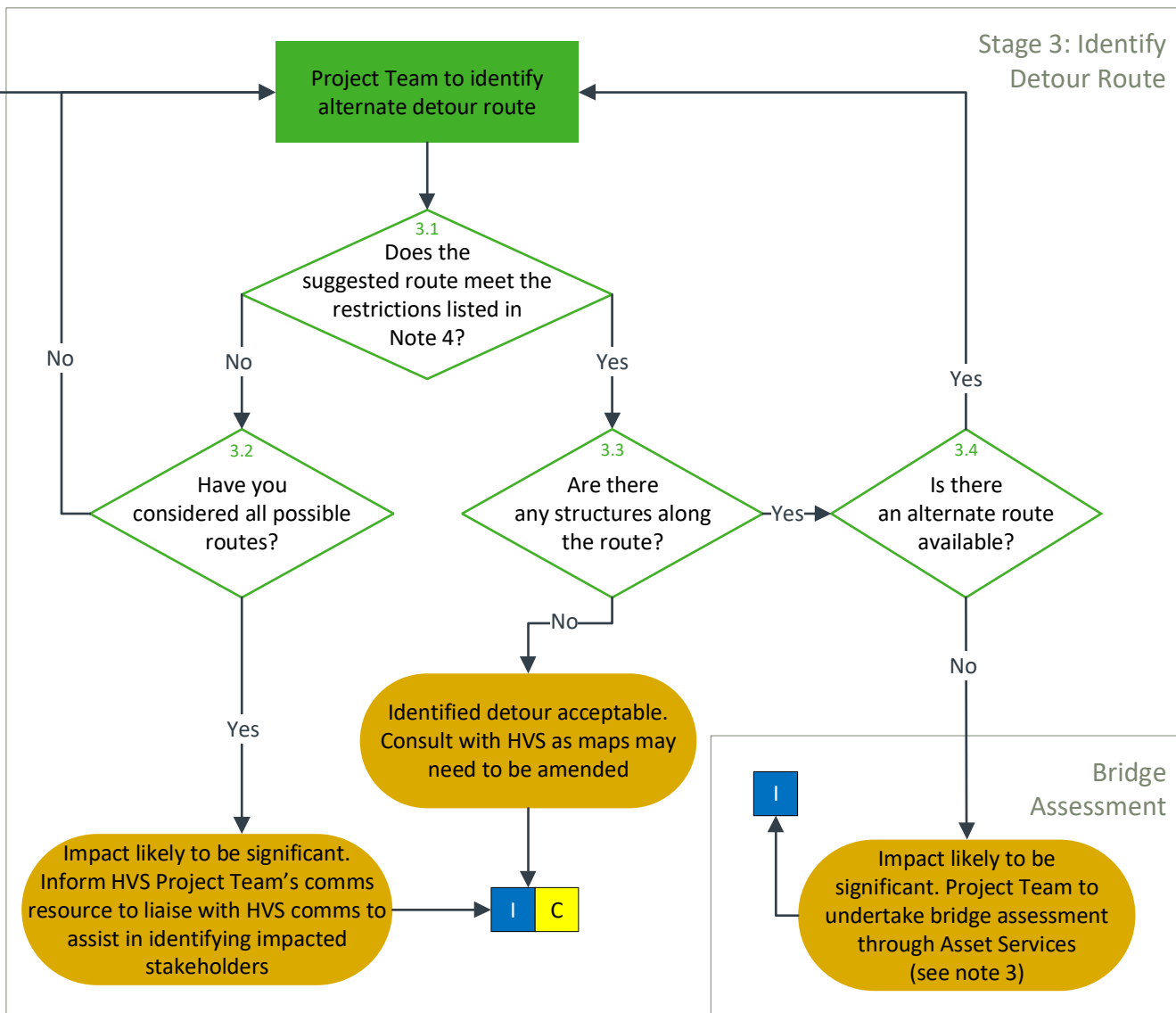
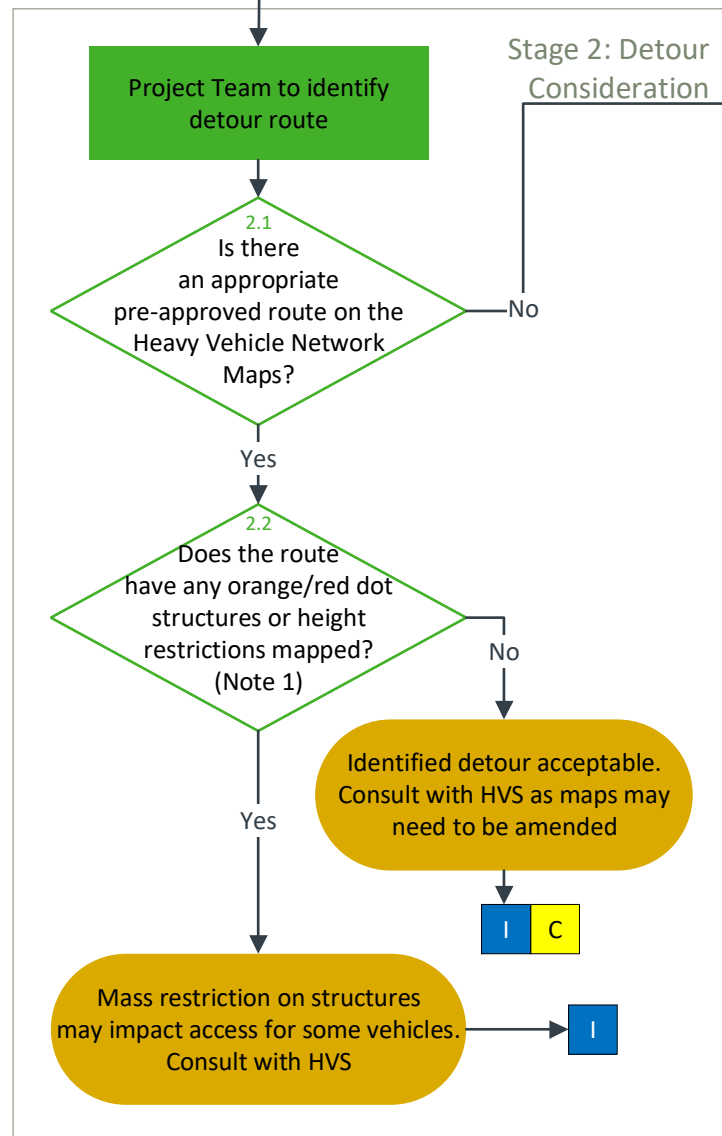
Note 2: Dimension and Mass Requirements

Dimension and mass access requirements are outlined in the below table. It should also be noted:

- Any intersection changes require a low speed swept path assessment (5km/h)
- Based on the route classification in the Agricultural Gazette Notice, access considerations should be given to agricultural vehicles up to 6.5m wide.

| Maximum Dimension and Mass Limits | Height | Width | Length | Low Speed Swept Path | Mass |
|---|--------|-------------|--------|----------------------|--------|
| B-Doubles | 4.6m | 2.5m | 26.0m | 8.7m | 68.5t |
| HPFV's | 4.3m | 2.5m | 36.5m | 10.6m | 85.5t |
| Oversize / Overmass Vehicles | 5.0m | 5.0m | 30.0m | Varies | 100.0t |
| Emergency & Emergency Preparedness | 5.0m | 4.0m | 26.0m | Varies | 78.5t |
| Agricultural Vehicles | 5.0m | Up to 6.5m* | 35.0m | Varies | 45.0t |

* Refer to OSOM agricultural map to determine width requirement



Note 3: Bridge Assessments

All structures – Bridges and Major Culverts (Single Span or Diameter of 1.8m or greater or waterway area of 3m² or greater) shall have an assessment undertaken by VicRoads Bridge Assessment Team or engage a PE level, VicRoads pre-qualified entity.

All structures can be viewed on vMap (bridge structure and culvert layers).

Bridge assessments will include a fee, payable by the project team, and depending on complexity, an assessment can take at least several weeks.

Note 4: Potential Restrictions

- The proposed route must have acceptable geometry (e.g. swept path assessment).
- Are there significant height or width clearance constraints on other parts of the route (i.e. rail network)?
- If the route is off the arterial network, you must seek Local Government Consent for access.
- Consider if there are any other works or events during the detour. To determine this, be sure to speak with:
 - Local Council
 - Permits and Events
 - Planned Disruptions
- Are there any other restrictions that need to be considered along the nominated route? E.g. truck curfews, Local Government imposed restriction.