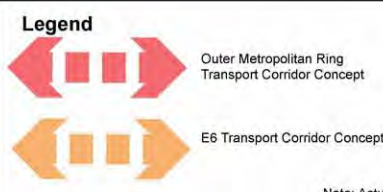
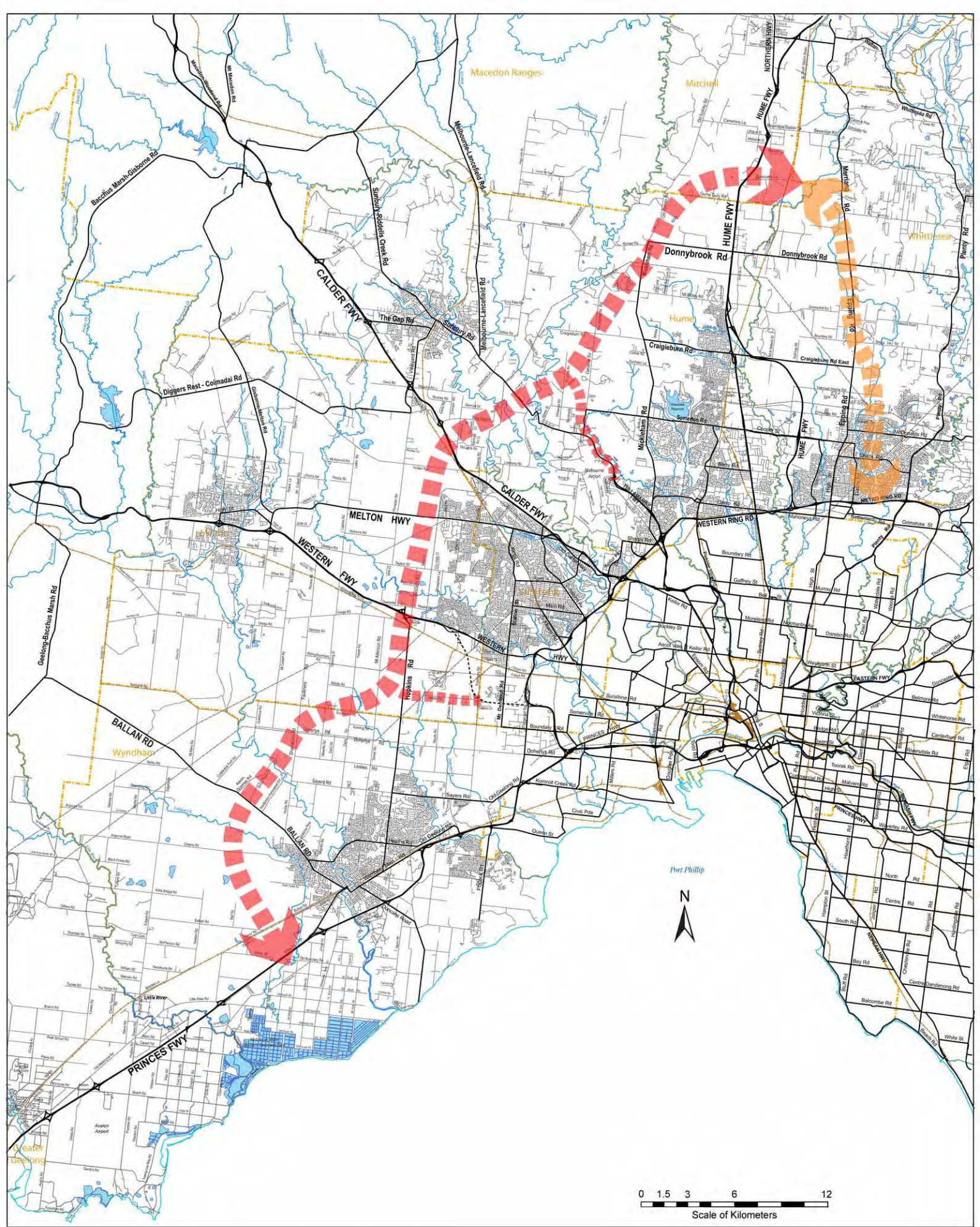


Appendix A – Locality Map

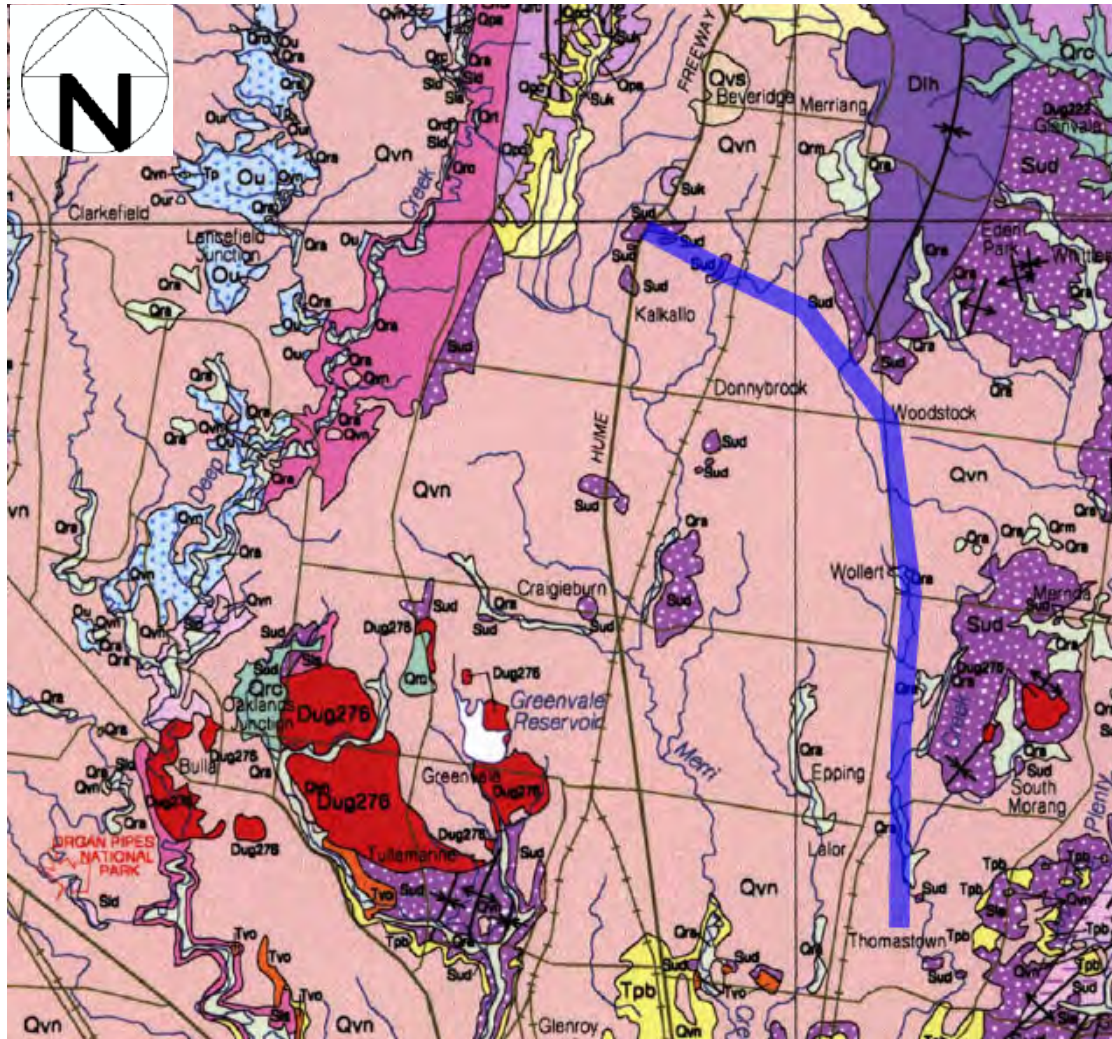


--- Municipal Boundary

Outer Metropolitan Ring Road & E6 Transport Corridor Concepts

Note: Actual locations of Transport Corridors are to be subject of investigation and decision.

Appendix B – Geological Maps



MAP SCALE 1:250 000



**Abstract from Geological Survey of Victoria Map 1:250000, MELBOURNE sheet,
SJ 55-5 Edition 2, May 1997**

Note that the added line represents the approximate centre of the proposed corridor

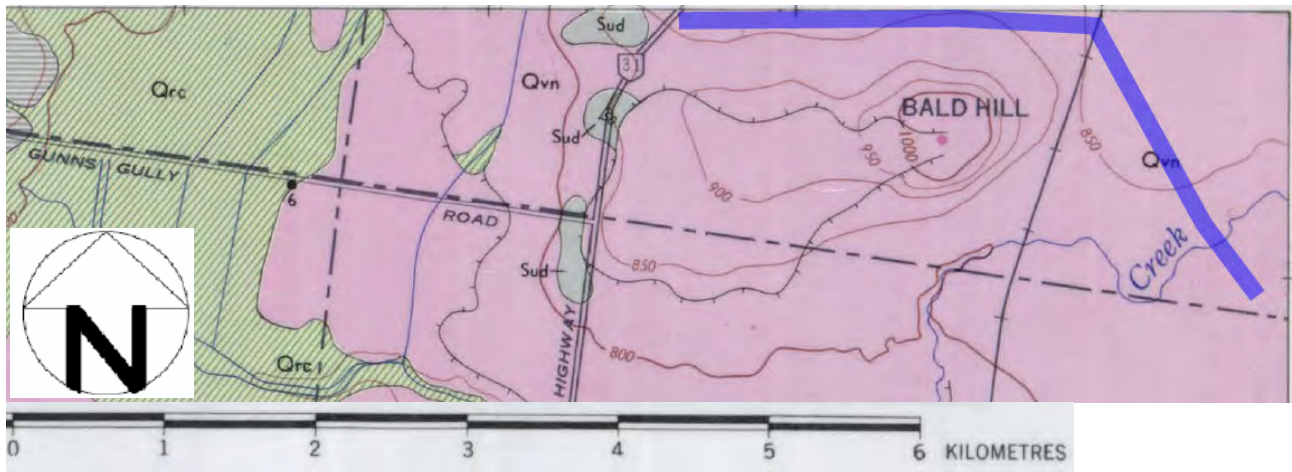
QUATERNARY	MOSTLY HOLOCENE	Qra		Qra	Fluvial: alluvium, gravel, sand, silt	
		Qrc		Qrc	Fluvial: "gully" alluvium, colluvium: gravel, sand, silt	
		Qrm		Qrm	Paludal: lagoon and swamp deposits: silt, clay	
		Qrt		Qrt	Fluvial: alluvial terraces: gravel, sand, silt	
	HOLOCENE TO PLEISTOCENE	Qrd		Qrd	Aeolian: coastal and inland dunes: dune sand, some swamp deposits	
		Qpa		Qpa	Fluvial: gravel, sand, silt	
	PLEISTOCENE	Qpc		Qpc	Fluvial: "gully" alluvium, colluvium: gravel, sand, silt	
		Qps	Lara Limestone	Qps	Lacustrine: limestone, minor sand	
		Qpy	Coode Island Silt	Qpy	Paludal: lagoon deposits: black silt, clay	
		Qp2		Qp2	Fluvial: gravel, sand, silt	
		Qs	Shepparton Formation	Qs	Fluvial: silt, sand, minor gravel	
		Qpd		Qpd	Aeolian: dune deposits: sand, clay, calcareous sand	
		Qpo		Qpo	Fluvial: post-Newer Volcanic hillwash: gravel, sand, silt	
	TERTIARY	HOLOCENE TO PLIOCENE	Qpe		Qpe	Fluvial: post-Newer Volcanics silt, sand, minor gravel
			Qvs	NEWER VOLCANICS	Qvs	Extrusive: scoria
Qvn		Qvn	Extrusive: tholeiitic to alkaline basalts, minor scoria and ash			
Qvt		Qvt	Extrusive: alkaline series: trachyte, mugearite, hawaiite, benmoreite			
PLIOCENE TO MIOCENE		Tpb	BRIGHTON GROUP	Tpb	Fluvial: gravel, sand, silt	
		Tp	undifferentiated	Tp	Fluvial: gravel, sand, silt	
MIOCENE		Tmn	Newport Silt, Fyansford Clay	Tmn	Marine: glauconitic silt, marl, minor limestone	
		Tmv	Pintadeen Basalt, unnamed Miocene basalts	Tmv	Extrusive: olivine tholeiites	
OLIGOCENE		Tom	Maude Formation (incl Maude Basalt)	Tom	Marine: limestone, calcareous sandstone, sandstone, quartzite, sandy limestone, with intercalated olivine basalt lava	
EOCENE TO OLIGOCENE		Tvo	OLDER VOLCANICS	Tvo	Extrusive: tholeiitic and minor alkaline basalts	
EOCENE	Tew	Werribee Formation	Tew	Fluvial: sand, sandy and silty clay, carbonaceous, pyritic in part		
TRIASSIC	TRc	Council Trench Formation	TRc	Fluvial: conglomerate, sandstone, siltstone		
PERMIAN	P	Wild Duck Formation and undifferentiated	P	Fluvioglacial, glaciomarine: tillite, diamictite, sandstone, mudstone, conglomerate		
DEVONIAN	UPPER	Duh		Duh	Metamorphic: hornfels	
		Dud		Dud	Intrusive: felsic dykes	
		Dug		Dug	Intrusive: granite	
		Dvd4	MOUNT DANDENONG IGNEOUS COMPLEX	Ferny Creek Rhyodacite	Dvd4	Extrusive: biotite-hypersthene rhyodacite ignimbrite, recrystallized
		Dvd3		Kalorama Rhyodacite	Dvd3	Extrusive and lacustrine: garnet-bearing rhyodacite ignimbrite, recrystallized; siltstone
		Dvd2		Mount Evelyn Rhyodacite	Dvd2	Extrusive: rhyolite to rhyodacite ignimbrite, welded
		Dvd1		Coldstream Rhyolite	Dvd1	Extrusive: rhyolite lava, coherent flow-banded to autobrecciated
		Dvm2	MACEDON VOLCANICS	Willimigongong Ignimbrite	Dvm2	Extrusive: biotite-hypersthene rhyodacite ignimbrite, recrystallized
		Dvm1		Hesket Ignimbrite	Dvm1	Extrusive: rhyolite ignimbrite, welded

DEVONIAN	LOWER	Dlwm	WALHALLA GROUP	Montys Hut Formation	Dlwm	Marine: thin-bedded sandstone, siltstone
		Dlwn		Norton Gully Sandstone	Dlwn	Marine: sandstone, thick to thin bedded, siltstone, minor conglomerate, limestone lenses
		Sig	JORDAN RIVER GROUP	Wilson Creek Shale	Sig	Marine: black shale, black siltstone
		Dlc		Waratah Limestone	Dlc	Marine: limestone, massive mid-grey recrystallized
		Dlh		Humevale Siltstone	Dlh	Marine: siltstone, minor sandstone
		Di		undifferentiated	Di	Marine: sandstone, mudstone
SILURIAN TO DEVONIAN		SDk	Karrie Conglomerate	SDk	Fluvial, lacustrine: conglomerate, massive, sandstone, siltstone	
SILURIAN	UPPER	Sub	Broadford Formation	Sub	Marine: thin to thick bedded siltstone, sandstone, conglomerate	
		Sui	Mclvor Sandstone	Sui	Marine: sandstone, mudstone, thick to thin bedded	
		Sud	Dargile Formation	Sud	Marine: siltstone, thin-bedded sandstone	
		Suk	Kilmore Siltstone	Suk	Marine: siltstone, sandstone, thin bedded	
		Sum	Melbourne Formation	Sum	Marine: sandstone, mudstone, medium to thin bedded	
	LOWER	Sip	Wapentake Sandstone	Sip	Marine: sandstone, thick to thin bedded, siltstone, conglomerate	
		Sls	Springfield Sandstone and Chintin Formation	Sls	Marine: sandstone, thick to thin bedded, siltstone, conglomerate	
		Sla	Anderson Creek Formation	Sla	Marine: sandstone, thick to thin bedded, siltstone, minor conglomerate	
		Sld	Deep Creek Siltstone	Sld	Marine: siltstone, thin-bedded, minor sandstone, conglomerate	
		Oub	Bolinda Shale, Darraweit Guim Siltstone	Oub	Marine: black shale, thin bedded sandstone, calcareous siltstone	
ORDOVICIAN	UPPER	Our	Riddell Sandstone	Our	Marine: sandstone, thin to thick bedded, shale, mudstone, minor conglomerate	
		Ou	undifferentiated	Ou	Marine: sandstone, shale, mudstone	
		Oi		Oi	Marine: sandstone, siltstone, shale, chert	
	LOWER	Olm		Olm	Marine: sandstone, siltstone, shale, chert; Darrivilian	
		Ola		Ola	Marine: sandstone, siltstone, shale, chert; Castlemainian (+Chewtonian)	
		Oly		Oly	Marine: sandstone, siltstone, shale, chert; Yapeenian	
		Oll		Oll	Marine: sandstone, siltstone, shale, chert; Lancefieldian	
		Olb		Olb	Marine: sandstone, siltstone, shale, chert; Bendigonian	
		Olh		Olh	Marine: sandstone, siltstone, shale, chert; Chewtonian	
		Olr		Olr	Marine: sandstone, thick bedded, siltstone, shale, chert	
CAMBRIAN	UPPER TO MIDDLE	Eug	Goldie Chert	Eug	Marine: chert, siliceous siltstone, shale, pale-coloured	
		Emm	Knowsley East Shale	Emm	Marine: shale, volcanoclastic sandstone	
	LOWER	Ecv	MOUNT WILLIAM VOLCANICS	Ecv	Extrusive, intrusive: basalt, andesite, boninite, rhyolite, gabbro, lithic sandstone, chert, shale, breccia	

Dvg

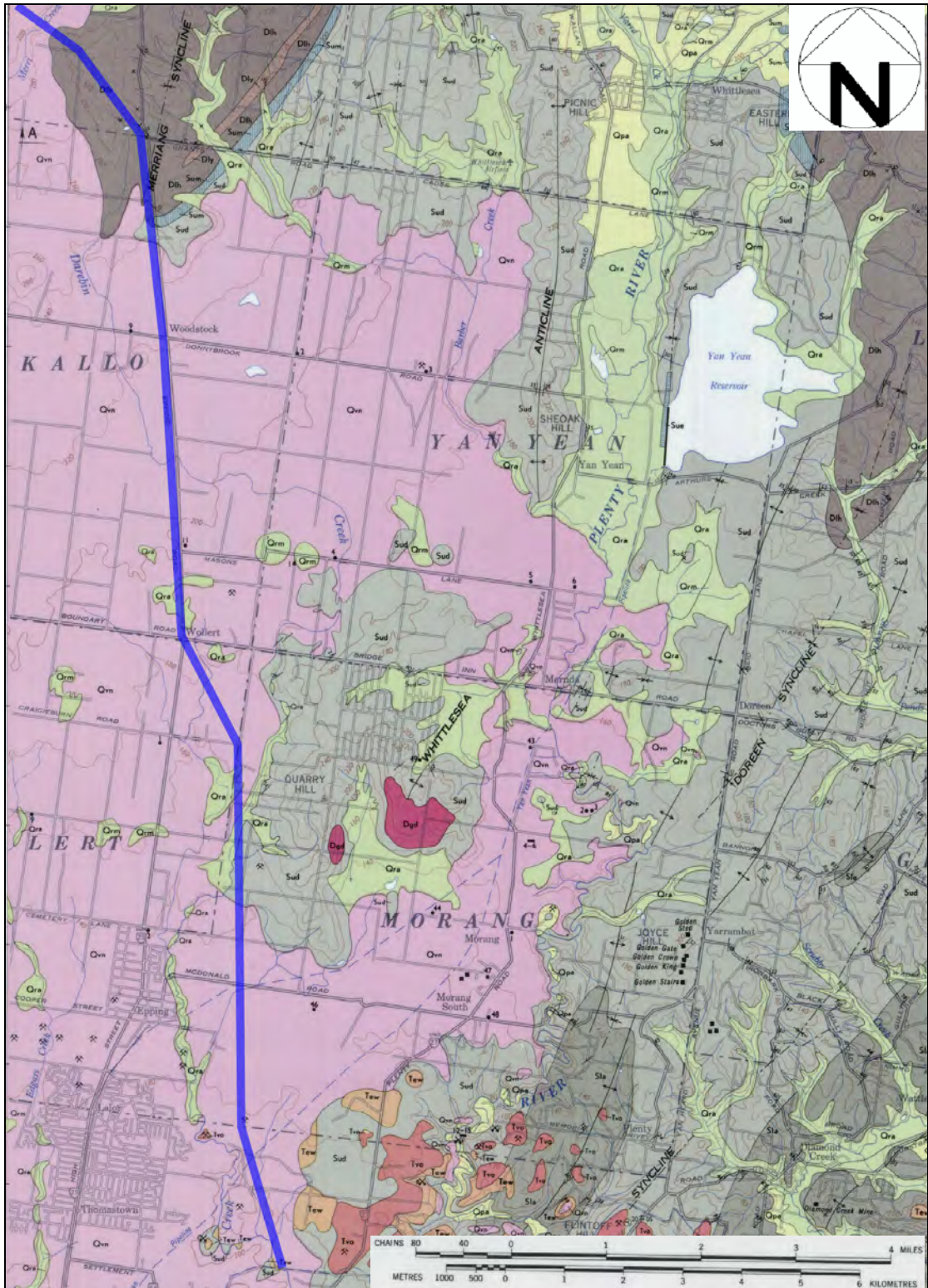
G217 Strathbogie Granite S-type
 G218 Trawool Granite S-type
 G219 King Parrot Creek Granodiorite S-type
 G220 Flowerdale Granodiorite Unassigned
 G221 Mount Disappointment Granodiorite I-type
 G222 Glenvale Granodiorite Unassigned
 G223 Black Range Granodiorite Unassigned
 G240 Silvan Granodiorite I-type
 G241 Lysterfield Granodiorite I-type
 G275 Morang Granodiorite I-type

G276 Bulla Adamellite S-type
 G277 You Yangs Granite I-type
 G279 Ingliston Granite I-type
 G280 Mount Egerton Granite I-type
 G282 Barringo Granodiorite I-type
 G283 Pyalong granodiorite Unassigned
 G284 Baynton Granodiorite I-type
 G285 Beauvallet Granodiorite I-type
 G287 Glenaroua Microgranite S-type
 G290 Harcourt Granodiorite I-type



Abstract from Geological Survey of Victoria Map 1:63360, MELBOURNE (Sunbury sheet), Part of 7822 Zone 55, 1974

Note that the added line represents the approximate centre of the proposed corridor



Abstract from Geological Survey of Victoria Map 1:63360, RINGWOOD (Yan Yeon sheet), Part of 7922 Zone 55, 1974

Note that the added line represents the approximate centre of the proposed corridor

