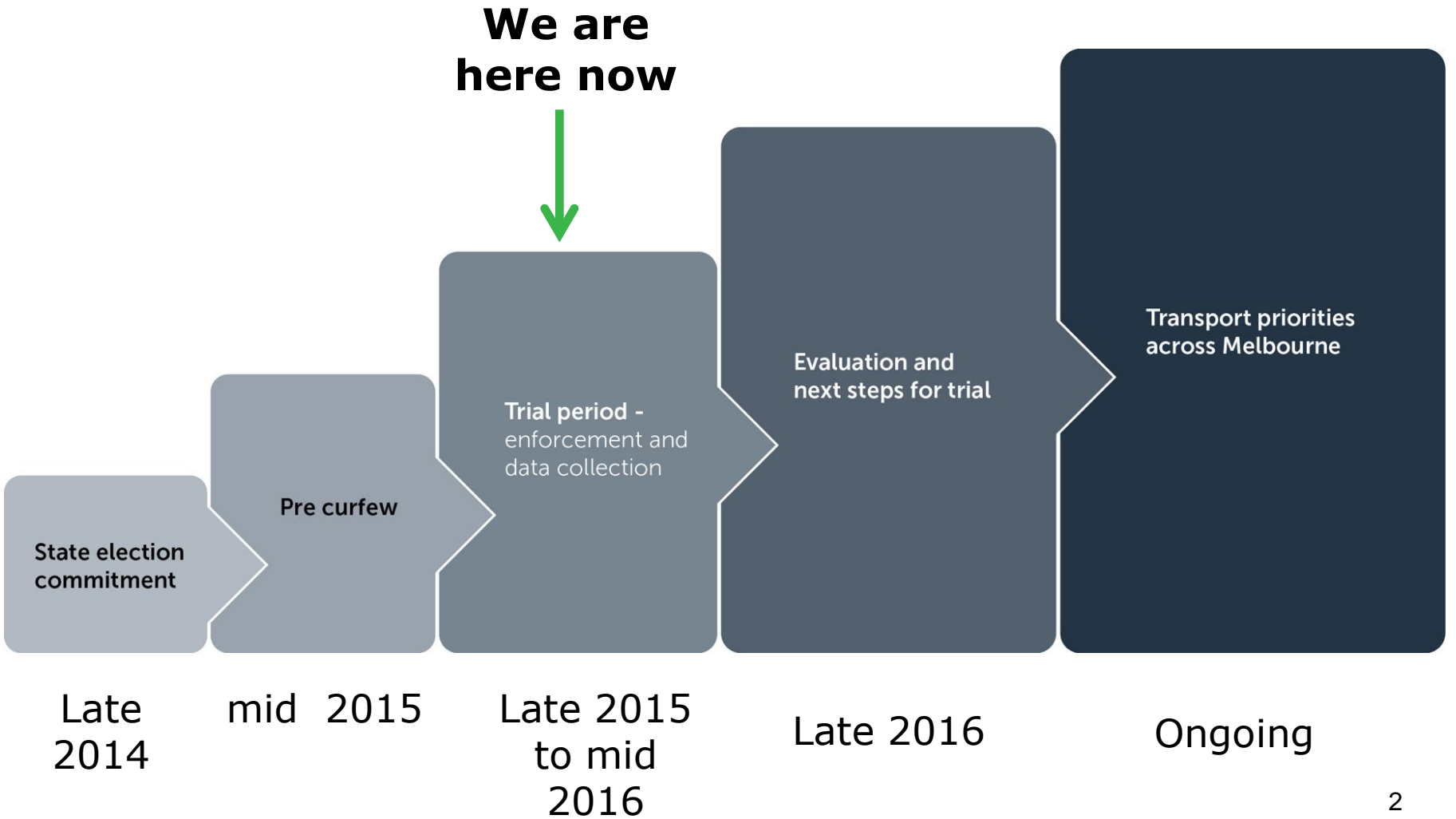


# North East Truck Curfew Presentation to Community Reference Group 31 May 2016







- Truck restriction were implemented on trucks weighing 4.5 tonnes gross
- The curfew runs from 10pm-6am (buses, caravans, cranes or concrete pumps exempted)

# Insights into curfew so far





## Enforcement

- 87 infringements notices have been issued by VicRoads officers up to the end of April 2016. Inc total hours
- A total of 92 hours of enforcement have been undertaken since the commencement of the curfew



## Rosanna Road noise assessment

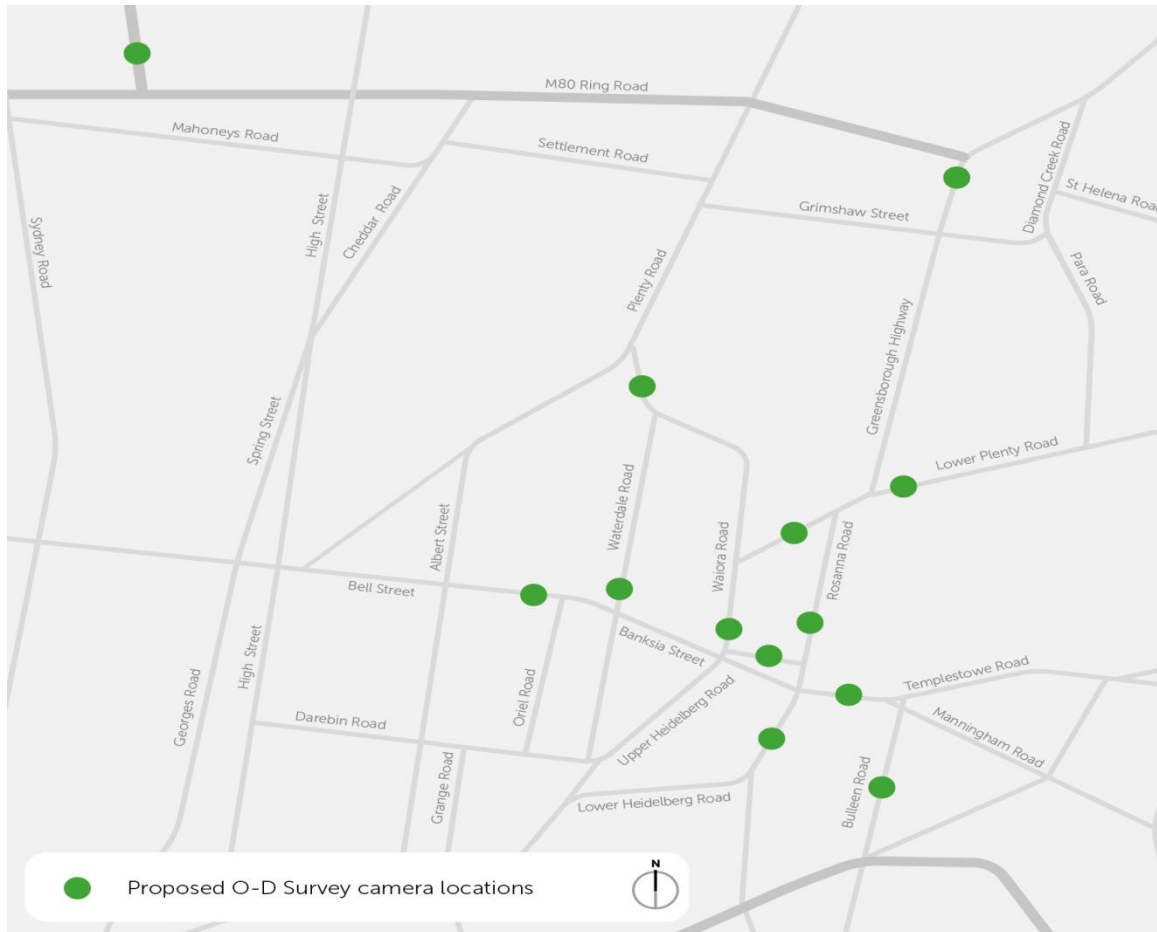
- Noise assessment was undertaken at four locations between 8pm-10pm and 6am-8am in early to mid March along Greensborough Highway and Rosanna Road
- The difference in noise between smaller trucks and larger trucks was minimal
- The average noise of trucks was in the range of 74 – 78 decibels (dB). This does not include noise generated by engine brakes.



## **Rosanna Road safety assessment**

- Commissioned an independent road safety assessment of Rosanna Road
- In consultation with Council, a road safety proposal has been developed for funding consideration

# Proposed Origin-Destination Survey



VicRoads will undertake an origin destination survey for Rosanna Road, Greensborough Highway, Waterdale Road and Waioira Road to determine if the trucks using these roads are local trips.



# Next Steps

