

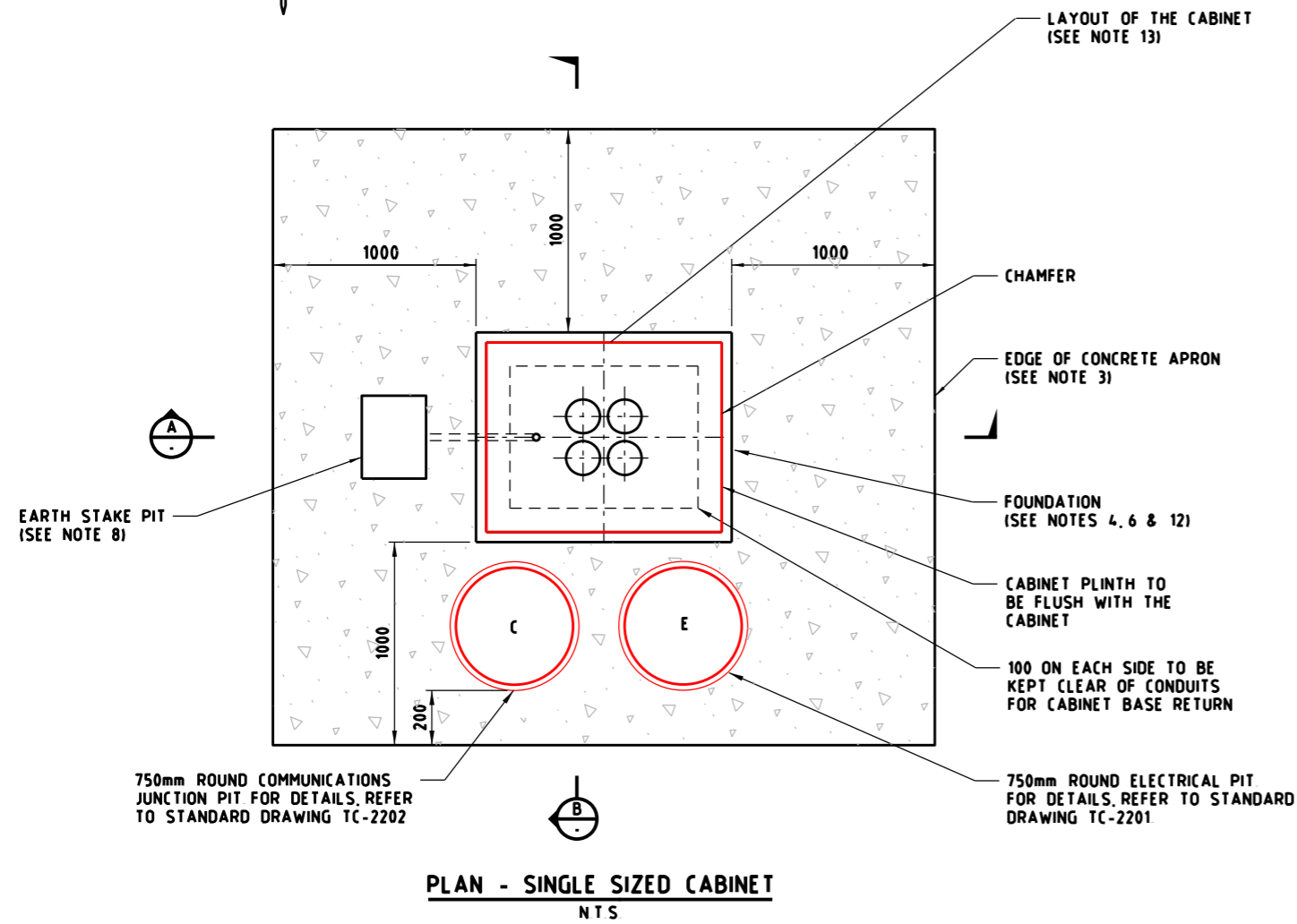
EARTH STAKE WHERE REQUIRED (SEE NOTES 9, 10 & 16)

SECTION A  
NTS

SECTION B  
NTS

**NOTES:**

- 1 DIMENSIONS SHOWN ARE IN MILLIMETERS, UNLESS NOTED OTHERWISE
- 2 FOUNDATION TO BE DESIGNED IN ACCORDANCE WITH AS5100 TO SUIT GROUND AND SITE CONDITIONS
- 3 IN UNSEALED AREAS, A COURTESY APRON SHALL BE PROVIDED CONSISTING OF 150mm THICK CONCRETE GRADE N32 WITH SL82 MESH ON 75mm COMPACTED BEDDING BEDDING MATERIAL TO BE CRUSHED ROCK MATERIAL WITH CBR10 CONCRETE AS PER STANDARD SECTION 703
- 4 TOP SURFACE OF PLINTH TO BE TRUE HORIZONTAL
- 5 CONDUIT STUBS SHALL PROTRUDE 20mm TO 30mm ABOVE THE CONCRETE FOOTING
- 6 ROADSIDE INFRASTRUCTURE OR VEGETATION CLEARANCE OF 1000mm MUST BE MAINTAINED IN FRONT AND BEHIND THE CABINET
- 7 FOUNDATION TO BE MINIMUM CLEARANCE OF 1000mm TO BACK OF KERB AND 200mm FROM BUILDING LINES, POLES ETC
- 8 EARTH STAKE PIT, (245mm x 190mm x 215mm DEEP, C/W LOCKABLE LID) TO BE INSTALLED IN APRON AT SIDE OF CABINET BASE. POSITION WILL BE DEPENDANT UPON MAINS ENTRY
- 9 EARTH STAKE TO COMPLY WITH AS/NZS3000
- 10 EARTH STAKE ONLY REQUIRED IF THIS CABINET IS A MAIN SWITCHBOARD, OR SUPPLIED FROM A LONG DISTANCE WITH NO EARTH CABLE FROM THE MAIN SWITCHBOARD, TO BE APPROVED BY VICROADS
- 11 CONDUITS TO BE CAPPED IF NOT USED
- 12 MAINTAIN 1000mm MINIMUM BETWEEN CABINETS IN LOCATIONS WHERE MULTIPLE CABINETS ARE LOCATED SIDE BY SIDE. CONCRETE APRON TO BE EXTENDED BETWEEN PLINTHS
- 13 FOUNDATION DIMENSIONS AND CONDUIT DETAILS TO BE CONFIRMED WITH CABINET SUPPLIER
- 14 CONDUITS TO BE DIRECTED TOWARDS PITS OR AS REQUIRED TO SUIT SITE LAYOUT
- 15 THREADED PORTION OF RAG BOLTS TO BE COATED WITH GRAPHITE GREASE OR SIMILAR PRODUCT AND PROTECTED FROM DAMAGE DURING CONSTRUCTION
- 16 WHERE CABINET IS LOCATED APPROX 20m OR LESS FROM HIGH VOLTAGE POWER LINES ADDITIONAL EARTH PROTECTION SHALL BE PROVIDED AND DESIGNED BY A QUALIFIED ELECTRICAL ENGINEER
- 17 ALL WIRING MUST ENTER CABINET VIA APPROPRIATE PIT INSTALLED AT THE BASE OF THE CABINET
- 18 FOR CABINETS LOCATED ON BATTERS, CONCRETE APRON AND ACCESS ARRANGEMENTS TO BE IN ACCORDANCE WITH STANDARD DRAWING TC-2237 AND TC-2238
- 19 APRON AND PITS SHALL NOT POND WATER



PLAN - SINGLE SIZED CABINET  
NTS

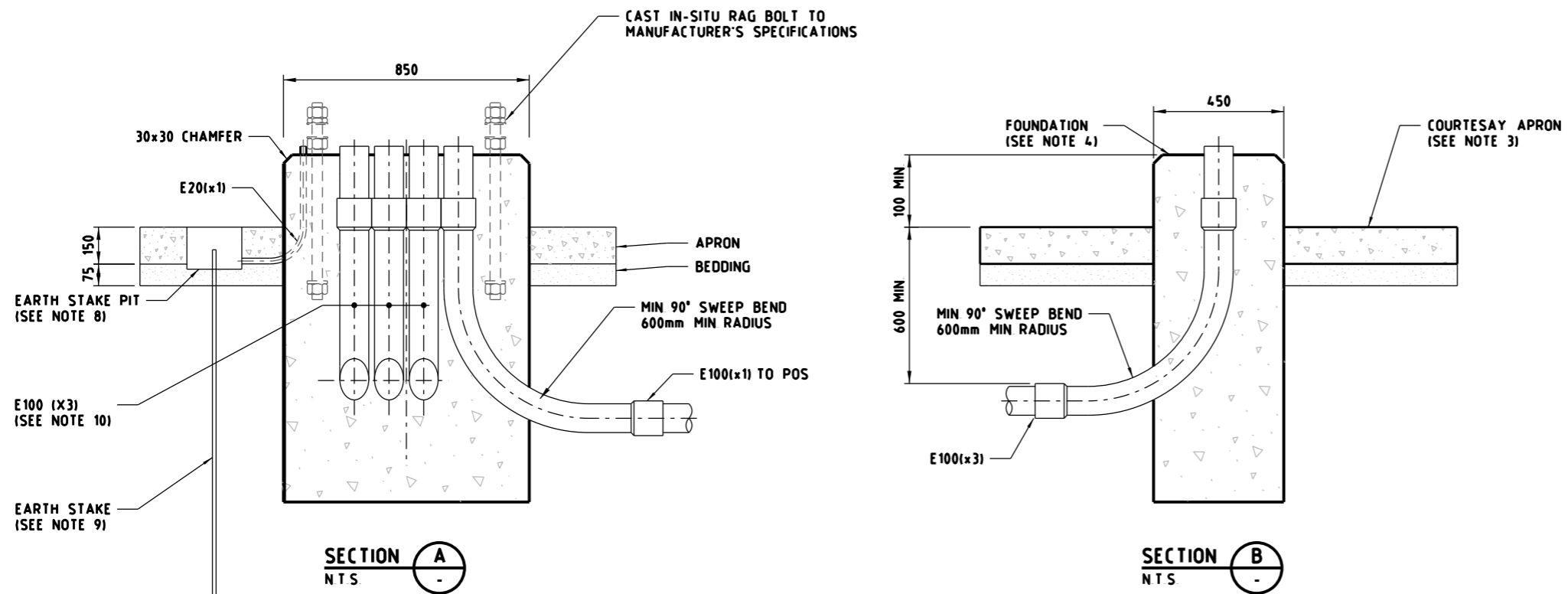
E			
D			
C			
B			
A	WH	12/2018	REVISION OF DETAIL
ISSUE	APP'D	DATE	AMENDMENT

GENERAL NOTES	

DESIGNED	M80 UPGRADE	07/2015
APPROVED	W HARVEY - MANAGER	
	ITS INFRASTRUCTURE & SYSTEM 08/2015	
CAT. FILE		
HOR. VER.	SCALE OF METRES	NTS

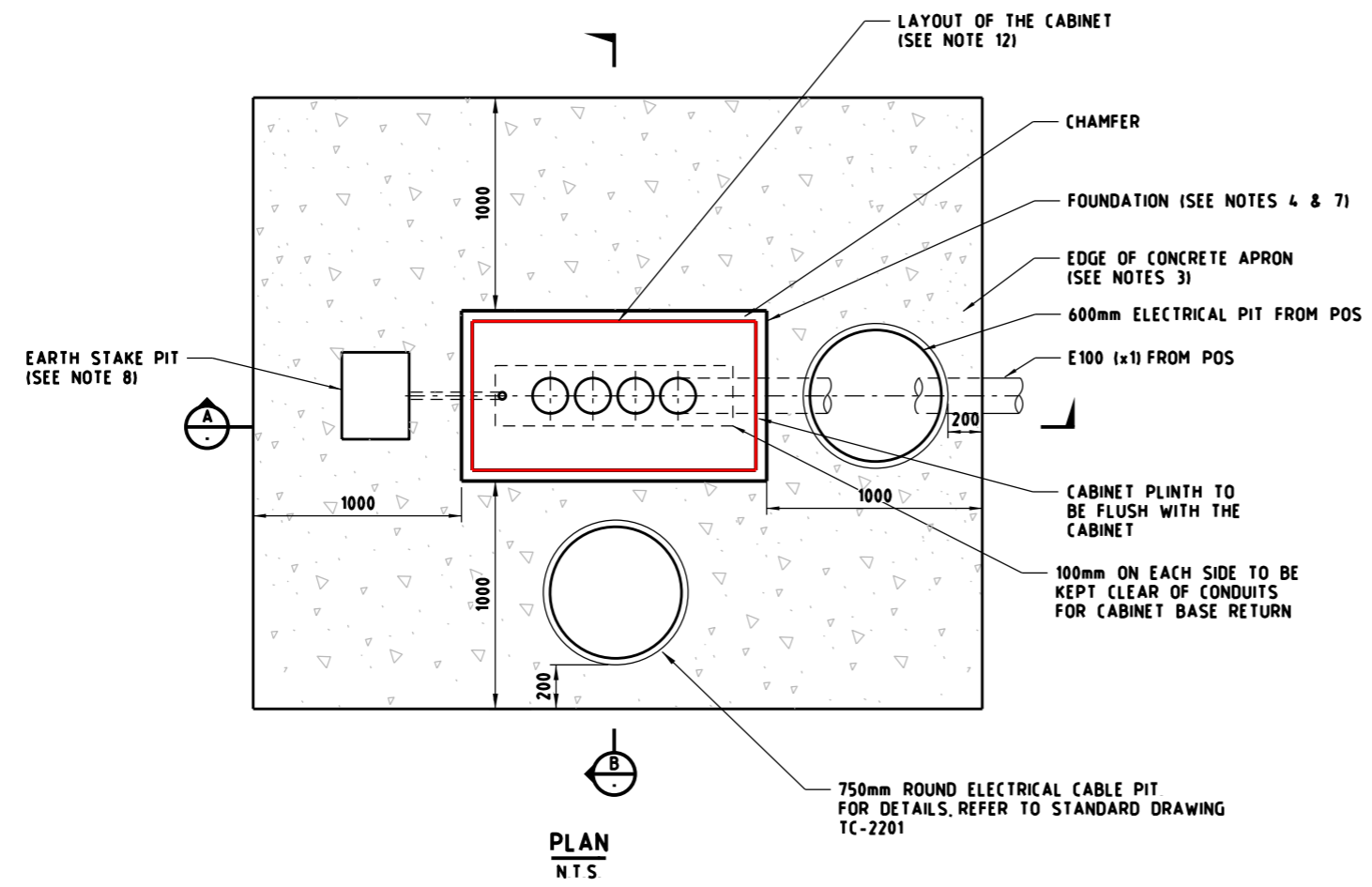


<b>STANDARD DRAWING</b> MANAGED MOTORWAY				
<b>CABINET AND POST FOUNDATIONS</b> SINGLE ITS FIELD CABINET FOUNDATION				
FILE NO	CONTRACT NO	SHEET NO	DRAWING NO	ISSUE
			TC-2230	A



**NOTES**

- 1 DIMENSIONS SHOWN ARE IN MILLIMETERS, UNO
- 2 FOUNDATION TO BE DESIGNED IN ACCORDANCE WITH AS5100 TO SUIT GROUND AND SITE CONDITIONS
- 3 IN UNSEALED AREAS, A COURTESY APRON SHALL BE PROVIDED CONSISTING OF 150mm THICK CONCRETE GRADE N32 WITH SL82 MESH ON 75mm COMPACTED BEDDING BEDDING MATERIAL TO BE CRUSHED ROCK MATERIAL WITH CBR10 CONCRETE AS PER STANDARD SECTION 703
- 4 TOP SURFACE OF PLINTH TO BE TRUE HORIZONTAL
- 5 CONDUIT STUBS SHALL PROTRUDE 20mm TO 30mm ABOVE THE CONCRETE FOOTING
- 6 A CLEARANCE OF 1000mm MUST BE MAINTAINED IN FRONT AND BEHIND THE CABINET
- 7 FOUNDATION TO BE MINIMUM CLEARANCE OF 1000mm TO BACK OF KERB AND 200mm FROM BUILDING LINES, POLES ETC
- 8 EARTH STAKE PIT, (245mm x 190mm x 215mm DEEP, C/W LOCKABLE LID) TO BE INSTALLED IN APRON AT SIDE OF CABINET BASE, POSITION WILL BE DEPENDANT UPON MAINS ENTRY
- 9 EARTH TO COMPLY WITH AS/NZS3000
- 10 CONDUITS TO BE CAPPED IF NOT USED
- 11 MAINTAIN 1000mm MINIMUM BETWEEN CABINETS IN LOCATIONS WHERE MULTIPLE CABINETS ARE LOCATED SIDE BY SIDE. CONCRETE APRON TO BE EXTENDED BETWEEN PLINTHS
- 12 FOUNDATION DIMENSIONS AND CONDUIT DETAILS TO BE CONFIRMED WITH CABINET SUPPLIER
- 13 CONDUITS TO BE DIRECTED TOWARDS PITS OR AS REQUIRED TO SUIT SITE LAYOUT
- 14 THREADED PORTION OF RAG BOLTS TO BE COATED WITH GRAPHITE GREASE OR SIMILAR PRODUCT AND PROTECTED FROM DAMAGE DURING CONSTRUCTION
- 15 WHERE CABINET IS LOCATED APPROX 20m OR LESS FROM HIGH VOLTAGE POWER LINES ADDITIONAL EARTH PROTECTION SHALL BE PROVIDED AND DESIGNED BY A QUALIFIED ELECTRICAL ENGINEER
- 16 ALL WIRING MUST ENTER CABINET VIA APPROPRIATE PIT INSTALLED AT THE BASE OF THE CABINET
- 17 BASE ENTRY CONDUITS MUST BE APPROPRIATELY SEALED WITH DUCT TAPE AT ALL TIMES UNTIL REQUIRED FOR CABLING
- 18 BASE ENTRY CONDUITS MUST BE APPROPRIATELY SEALED AT THE TIME OF CABLE INSTALLATION
- 19 CONDUIT FROM POINT OF SUPPLY TO BE 100mm
- 20 APRON AND PITS SHALL NOT POND WATER



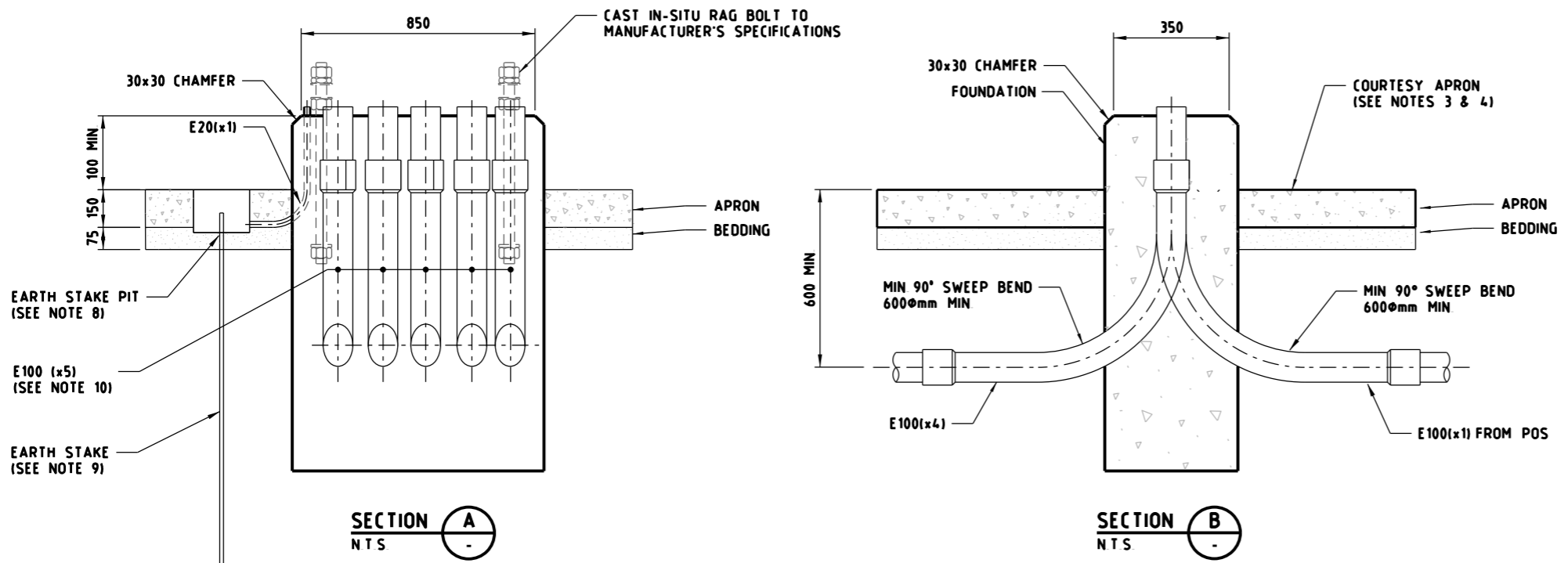
E			
D			
C			
B	WH	12/2018	REVISION OF DETAIL
A	SP	05/2017	CHANGE TO APRON
ISSUE	APP'D	DATE	AMENDMENT

GENERAL NOTES

DESIGNED	M80 UPGRADE	07/2015
APPROVED	W HARVEY - MANAGER	
	ITS INFRASTRUCTURE & SYSTEM 08/2015	
CAT. PROJ. FILE		
	HOR. VER.	SCALE OF METRES N T S

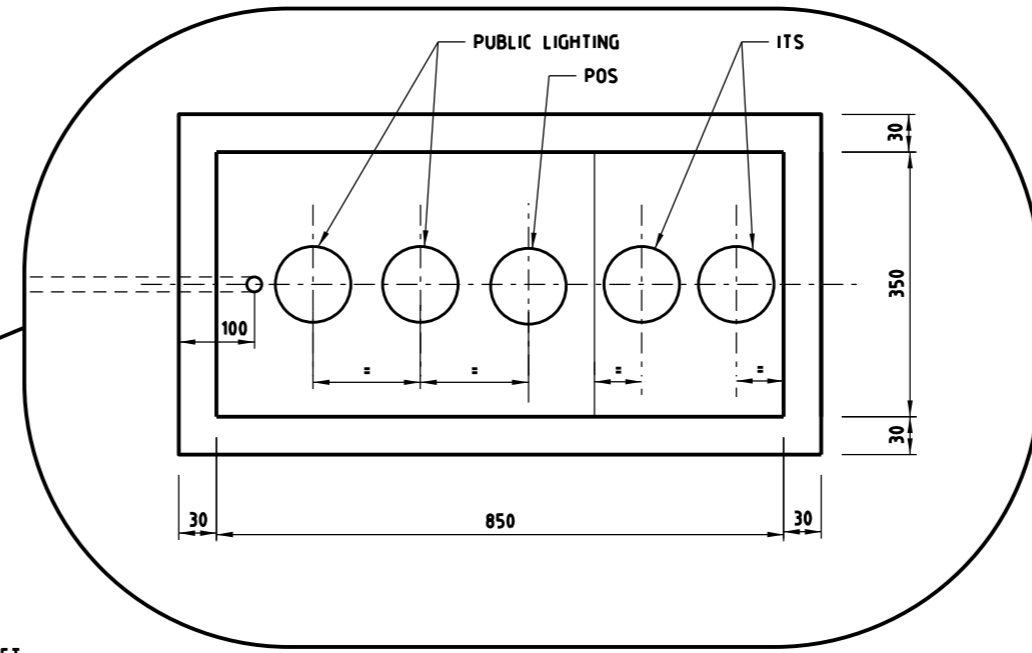
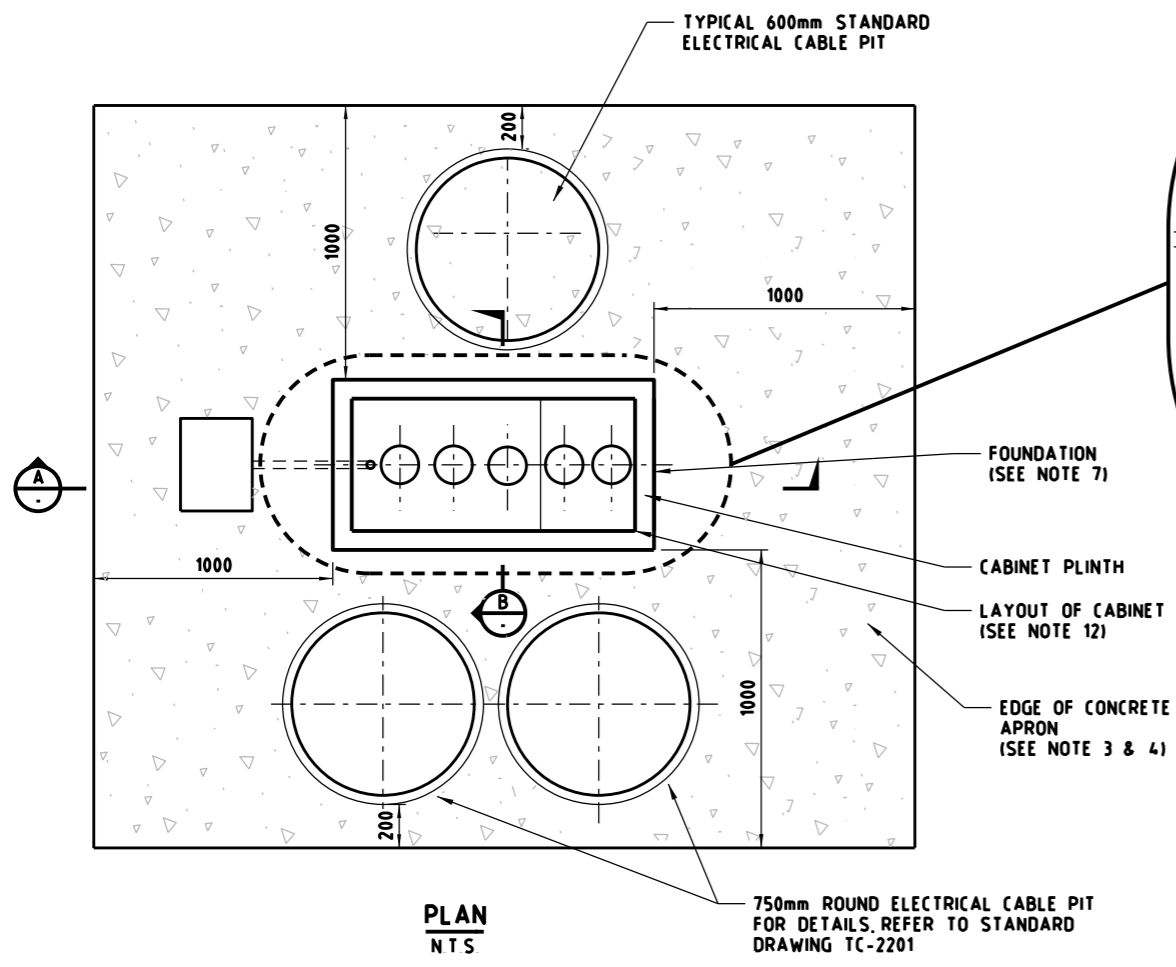


<b>STANDARD DRAWING</b>				
MANAGED MOTORWAY				
<b>CABINET AND POST FOUNDATIONS</b>				
DISTRIBUTION CABINET TYPE 1				
FOR MANAGED MOTORWAYS				
FILE NO	CONTRACT NO	SHEET NO	DRAWING NO	ISSUE
			TC-2231	B



**NOTES:**

- 1 DIMENSIONS SHOWN ARE IN MILLIMETERS, UNO
- 2 FOUNDATION TO BE DESIGNED IN ACCORDANCE WITH AS5100 TO SUIT GROUND AND SITE CONDITIONS
- 3 IN UNSEALED AREAS, A COURTESY APRON SHALL BE PROVIDED CONSISTING OF 150mm THICK CONCRETE GRADE N32 WITH SL82 MESH ON 75mm COMPACTED BEDDING MATERIAL TO BE CRUSHED ROCK MATERIAL WITH CBR10 CONCRETE AS PER STANDARD SECTION 703
- 4 TOP SURFACE OF PLINTH TO BE TRUE HORIZONTAL
- 5 CONDUIT STUBS SHALL PROTRUDE 20mm TO 30mm ABOVE THE CONCRETE FOOTING
- 6 A CLEARANCE OF 1000mm MUST BE MAINTAINED IN FRONT AND BEHIND THE CABINET
- 7 FOUNDATION TO BE MINIMUM CLEARANCE OF 1000mm TO BACK OF KERB AND 200mm FROM BUILDING LINES, POLES ETC
- 8 EARTH STAKE PIT, (245mm x 190mm x 215mm DEEP, C/W LOCKABLE LID) TO BE INSTALLED IN APRON AT SIDE OF CABINET BASE, POSITION WILL BE DEPENDANT UPON MAINS ENTRY
- 9 EARTH STAKE TO COMPLY WITH AS/NZS3000
- 10 CONDUITS TO BE CAPPED IF NOT USED
- 11 MAINTAIN 1000mm MINIMUM BETWEEN CABINETS IN LOCATIONS WHERE MULTIPLE CABINETS ARE LOCATED SIDE BY SIDE CONCRETE APRON TO BE EXTENDED BETWEEN PLINTHS
- 12 FOUNDATION DIMENSIONS AND CONDUIT DETAILS TO BE CONFIRMED WITH CABINET SUPPLIER
- 13 CONDUITS TO BE DIRECTED TOWARDS PITS OR AS REQUIRED TO SUIT SITE LAYOUT
- 14 THREADED PORTION OF RAG BOLTS TO BE COATED WITH GRAPHITE GREASE OR SIMILAR PRODUCT AND PROTECTED FROM DAMAGE DURING CONSTRUCTION
- 15 WHERE CABINET IS LOCATED APPROX 20m OR LESS FROM HIGH VOLTAGE POWER LINES ADDITIONAL EARTH PROTECTION SHALL BE PROVIDED AND DESIGNED BY A QUALIFIED ELECTRICAL ENGINEER
- 16 ALL WIRING MUST ENTER CABINET VIA APPROPRIATE PIT INSTALLED AT THE BASE OF THE CABINET
- 17 BASE ENTRY CONDUITS MUST BE APPROPRIATELY SEALED WITH DUCT TAPE AT ALL TIMES UNTIL REQUIRED FOR CABLING
- 18 BASE ENTRY CONDUITS MUST BE APPROPRIATELY SEALED AT THE TIME OF CABLE INSTALLATION
- 19 CONDUIT FROM POINT OF SUPPLY TO BE 100mm
- 20 APRON AND PIT SHALL NOT POND WATER



E			
D			
C			
B	WH	12/2018	REVISION OF DETAIL
A	SP	05/2017	CHANGE TO APRON
ISSUE	APP'D	DATE	AMENDMENT

GENERAL NOTES

DESIGNED M80 UPGRADE 07/2015

APPROVED W HARVEY - MANAGER  
ITS INFRASTRUCTURE & SYSTEM 08/2015

CAT. PROJ. FILE

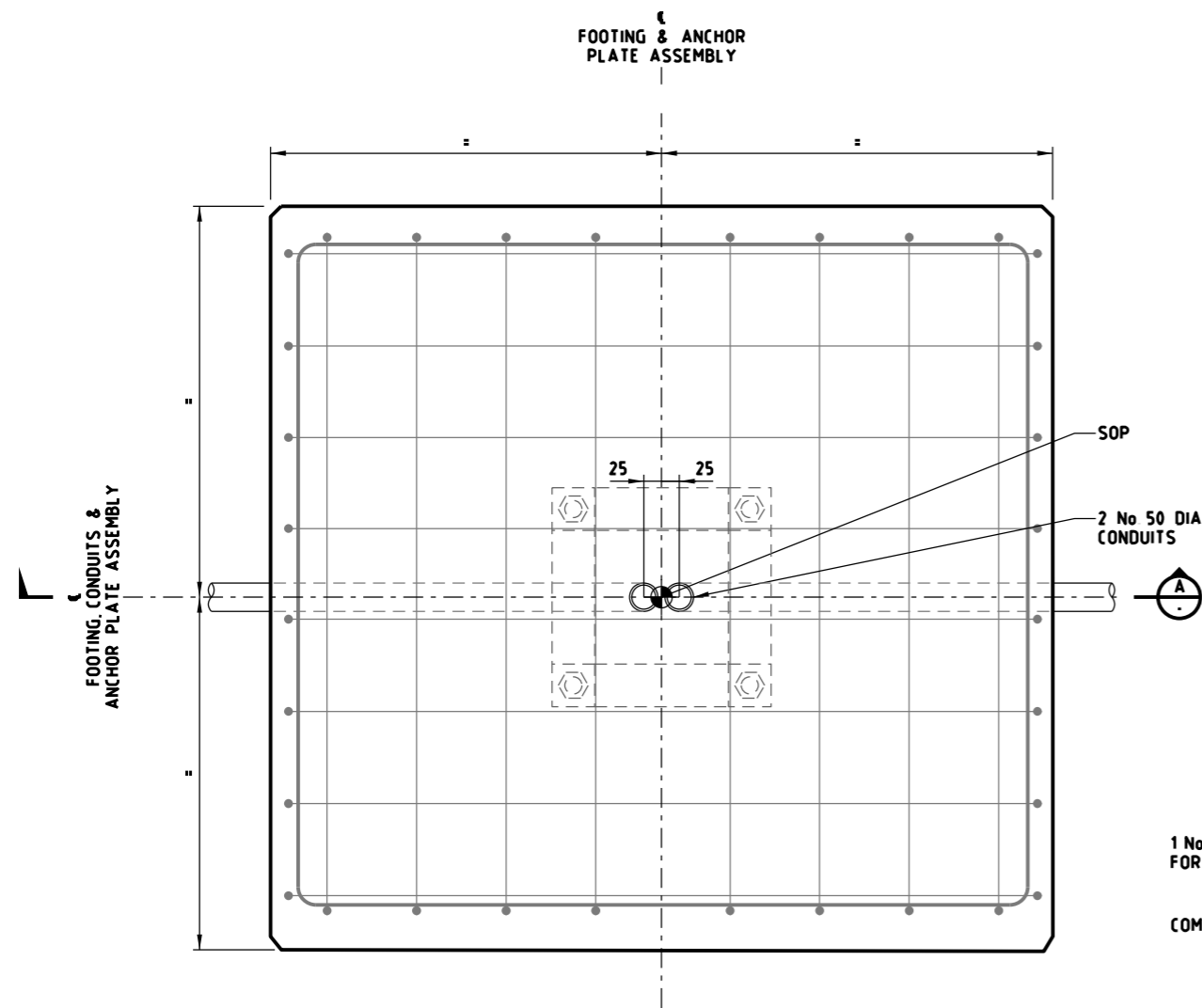
SCALE OF METRES N T S

HOR VER

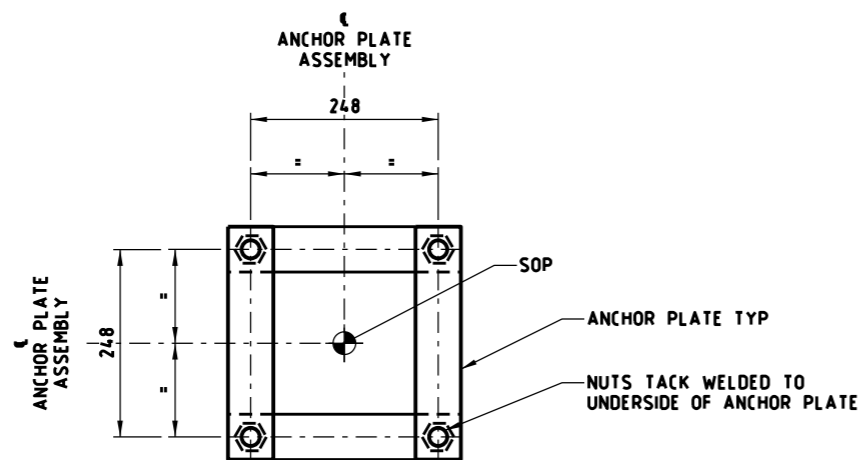
**STANDARD DRAWING**  
MANAGED MOTORWAY

**CABINET AND POST FOUNDATIONS**  
DISTRIBUTION CABINET TYPE 3  
FOR MANAGED MOTORWAYS

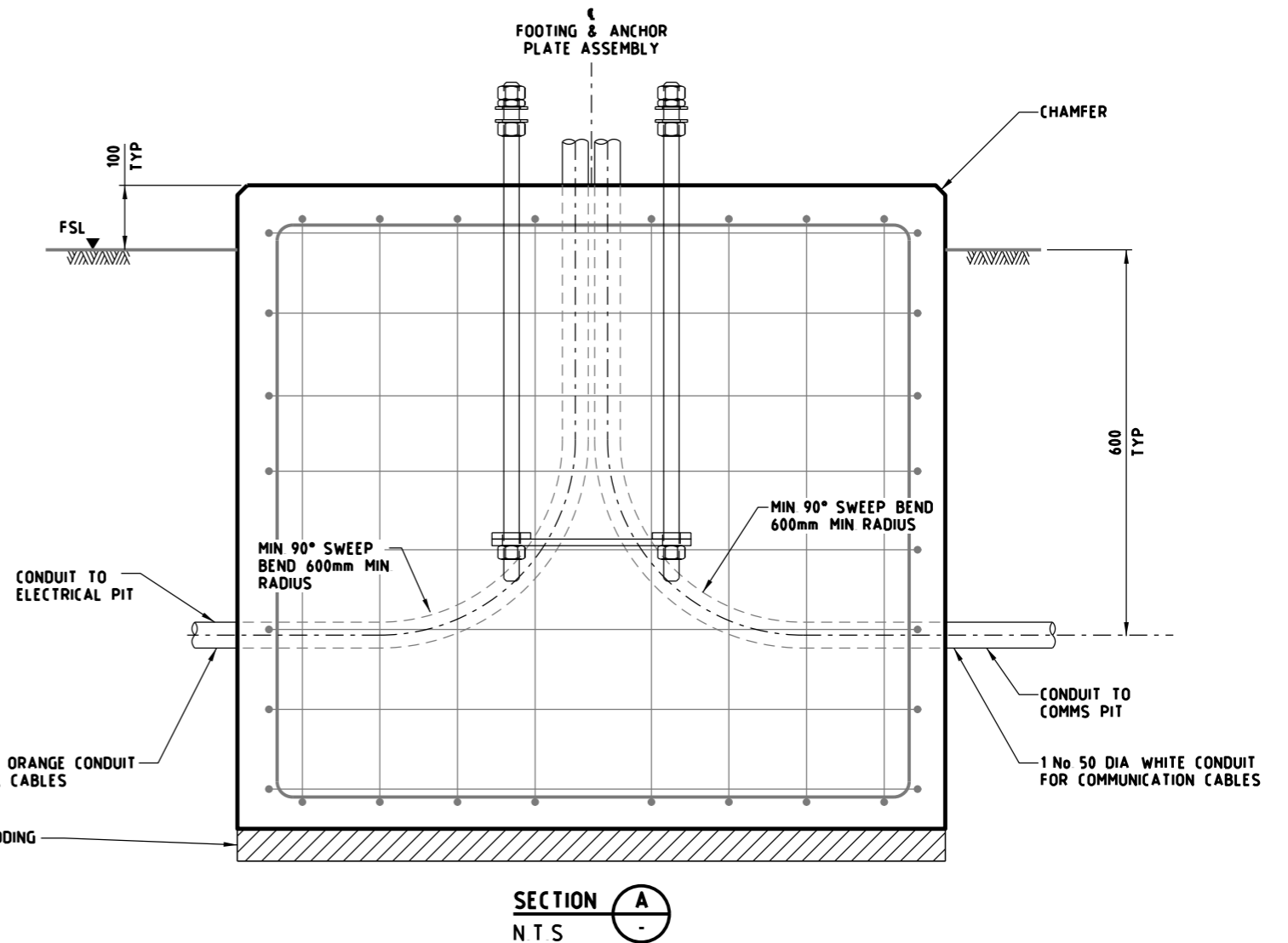
FILE NO	CONTRACT NO	SHEET NO	DRAWING NO	ISSUE
			TC-2232	B



PLAN  
NTS



ANCHOR PLATE ASSEMBLY - PLAN  
NTS



SECTION A  
NTS

**NOTES**

- 1 REINFORCEMENT TO BE HOT ROLLED DEFORMED BARS, GRADE 500N AND SHALL BE IN ACCORDANCE WITH AS/NZS 4671
- 2 REINFORCEMENT BARS SHOWN ARE DIAGRAMMATIC ONLY.
- 3 ALL HOOKS, BENDS AND COGS ARE STANDARD AND SHALL BE IN ACCORDANCE WITH AS 5100 5 BRIDGE DESIGN
- 4 ALL ANCHOR PLATES TO BE TACK WELDED TOGETHER
- 5 CONCRETE WORKS AND TESTING AS PER STANDARD SECTION 610
- 6 STANDARD DRAWINGS SHOWN ARE INDICATIVE ONLY STRUCTURAL DETAILS SHALL BE DESIGNED BY A PRE-QUALIFIED CONSULTANT TO THE SATISFACTION OF VICROADS AND SHALL COMPLY WITH VICROADS' SPECIFICATION BRIDGE TECHNICAL NOTES (BTN'S) AND AS 5100 WHERE APPLICABLE

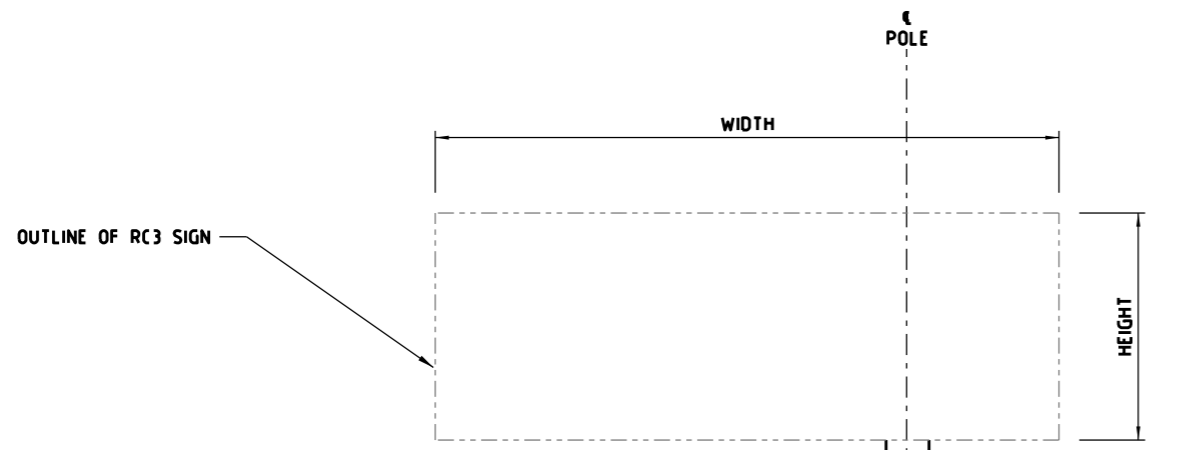
E			
D			
C			
B			
A	WH	12/2018	REMOVAL OF STRUCTURAL DETAIL
ISSUE	APP'D	DATE	AMENDMENT

GENERAL NOTES	
---------------	--

DESIGNED	M80 UPGRADE	07/2015
APPROVED	W HARVEY - MANAGER ITS INFRASTRUCTURE & SYSTEM 08/2015	
CAT:	SCALE OF METRES	
PROJ:	NTS	
FILE	HOR	VER

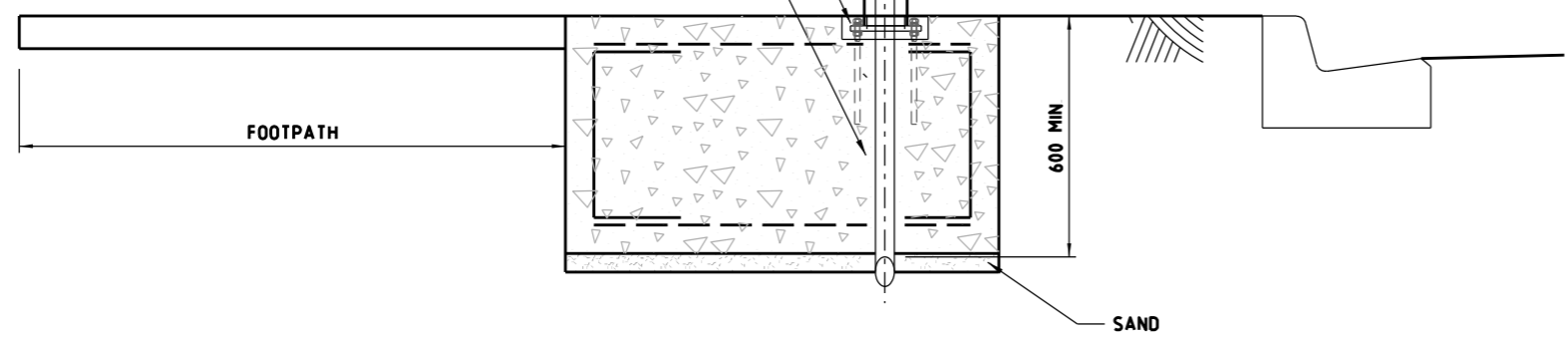


<b>STANDARD DRAWING</b> MANAGED MOTORWAY				
<b>CABINET AND POST FOUNDATIONS</b> TYPICAL VLSL POLE SPREAD FOOTING				
FILE NO	CONTRACT NO	SHEET NO	DRAWING NO	ISSUE
			TC-2233	A

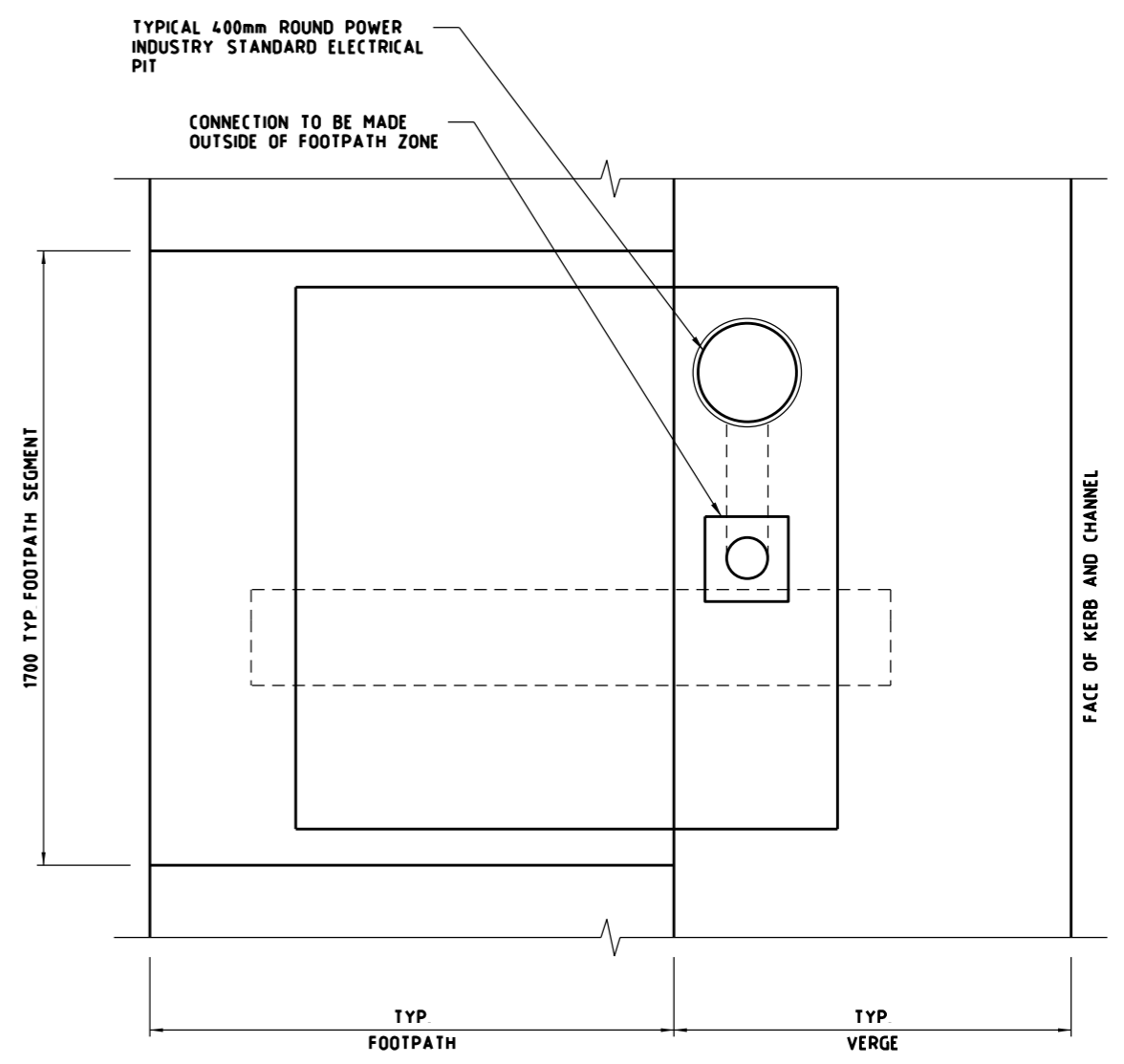


FOR POLE BASE PLATE ARRANGEMENTS REFER TO STANDARD DRAWING TC-2223

E50/E63 TO POS • C50



**FOUNDATION DETAIL**  
N15



**LEGEND:**

CONDUIT SPECIFICATION (TO AS 2053)  
E50/E63 = ELECTRICAL (ORANGE) HEAVY DUTY CONDUIT  
C50 = COMMUNICATIONS (WHITE) HEAVY DUTY CONDUIT

**NOTES:**

- 1 FOUNDATION TO BE DESIGNED IN ACCORDANCE WITH ASS100 TO SUIT GROUND AND SITE CONDITIONS
- 2 FOR HOLD DOWN BOLT DETAILS, REFER TO STANDARD DRAWING TC-1601.
- 3 FOR POLE AND BRACKET DETAILS, REFER TO STANDARD DRAWING TC-2220
- 4 STANDARD DRAWINGS SHOWN ARE INDICATIVE ONLY STRUCTURAL DETAILS SHALL BE DESIGNED BY A PRE-QUALIFIED CONSULTANT TO THE SATISFACTION OF VICROADS AND SHALL COMPLY WITH VICROADS' SPECIFICATION BRIDGE TECHNICAL NOTES (BTN'S) AND AS 5100 WHERE APPLICABLE.

E			
D			
C			
B			
A	WH	12/2018	REMOVAL OF STRUCTURAL DETAIL
ISSUE	APP'D	DATE	AMENDMENT

GENERAL NOTES

DESIGNED M80 UPGRADE 07/2015

APPROVED W HARVEY - MANAGER  
ITS INFRASTRUCTURE & SYSTEM 08/2015

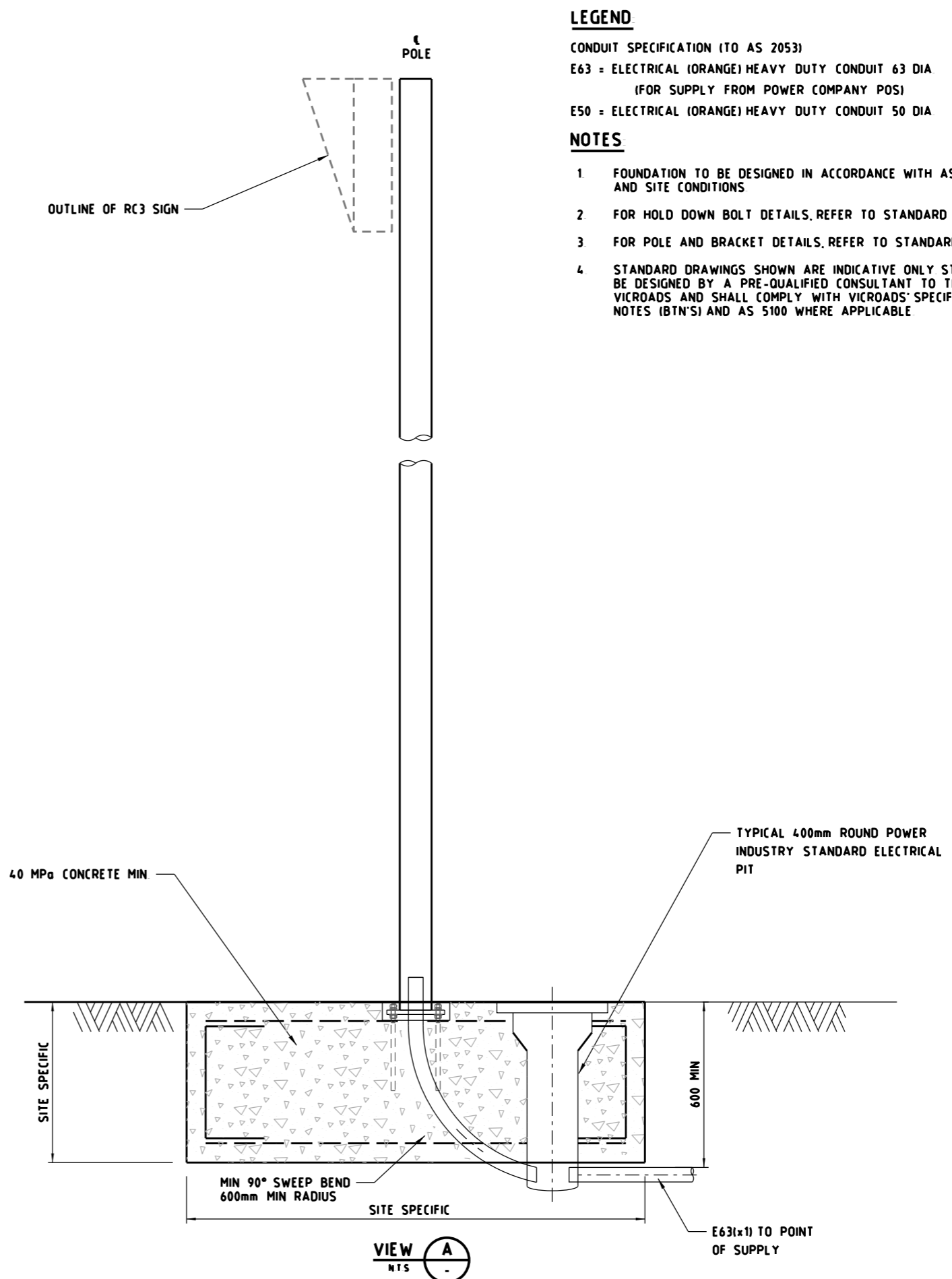
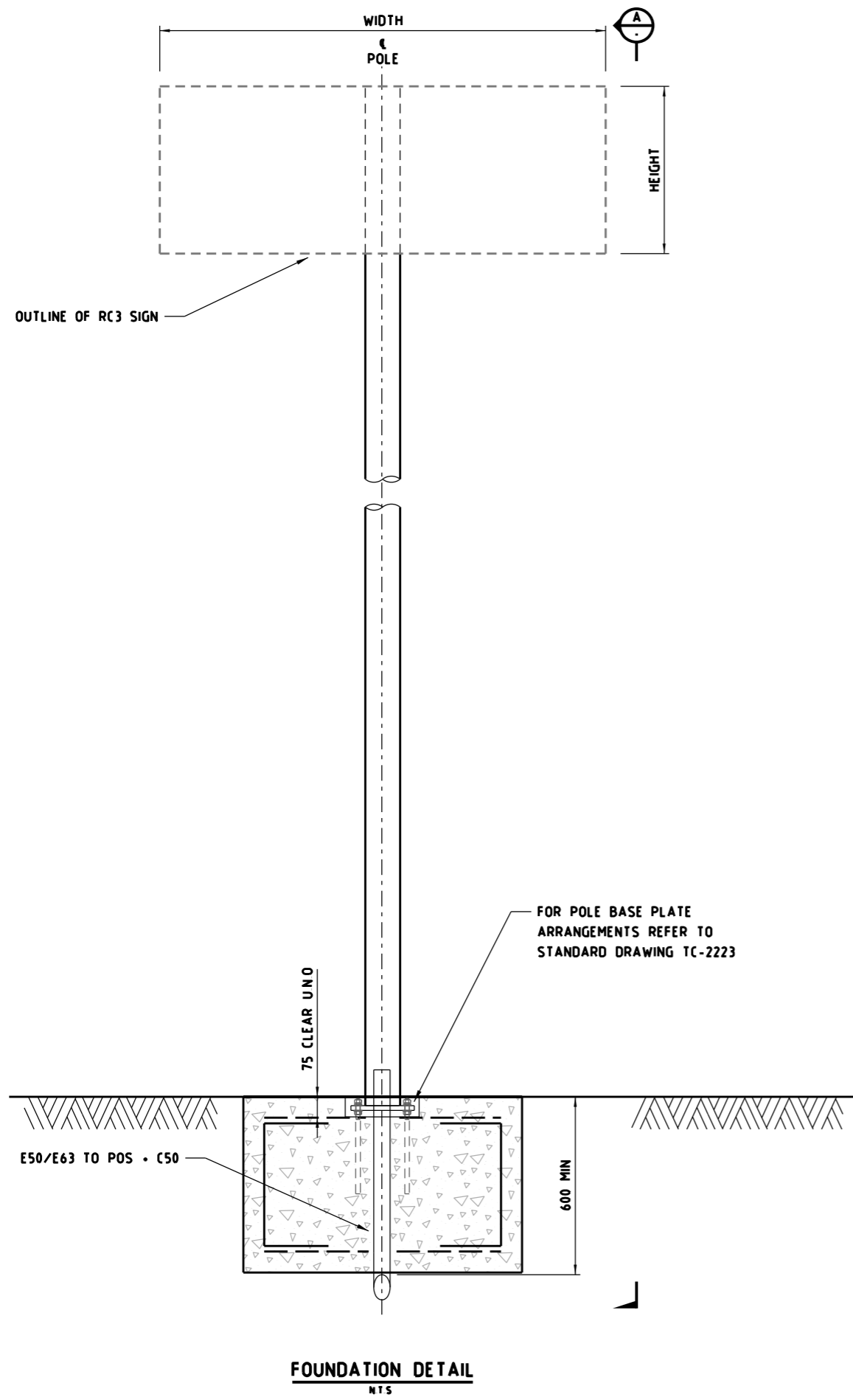
CAT. PROJ. FILE

SCALE OF METRES  
N15

HOR VER

**STANDARD DRAWING**  
MANAGED MOTORWAY  
**CABINET AND POST FOUNDATIONS**  
RC3 / TT3 POLE SPREAD FOOTING TYPE 1  
TYPICAL ARRANGEMENT

FILE NO	CONTRACT NO	SHEET NO	DRAWING NO	ISSUE
			TC-2235	A



**LEGEND**

CONDUIT SPECIFICATION (TO AS 2053)  
 E63 = ELECTRICAL (ORANGE) HEAVY DUTY CONDUIT 63 DIA  
 (FOR SUPPLY FROM POWER COMPANY POS)  
 E50 = ELECTRICAL (ORANGE) HEAVY DUTY CONDUIT 50 DIA

**NOTES**

- 1 FOUNDATION TO BE DESIGNED IN ACCORDANCE WITH AS5100 TO SUIT GROUND AND SITE CONDITIONS
- 2 FOR HOLD DOWN BOLT DETAILS, REFER TO STANDARD DRAWING TC-1601
- 3 FOR POLE AND BRACKET DETAILS, REFER TO STANDARD DRAWING TC-2220
- 4 STANDARD DRAWINGS SHOWN ARE INDICATIVE ONLY STRUCTURAL DETAILS SHALL BE DESIGNED BY A PRE-QUALIFIED CONSULTANT TO THE SATISFACTION OF VICROADS AND SHALL COMPLY WITH VICROADS' SPECIFICATION BRIDGE TECHNICAL NOTES (BTN'S) AND AS 5100 WHERE APPLICABLE

E			
D			
C			
B			
A	W H	12/2018	REMOVAL OF STRUCTURAL DETAIL
ISSUE	APP'D	DATE	AMENDMENT

GENERAL NOTES

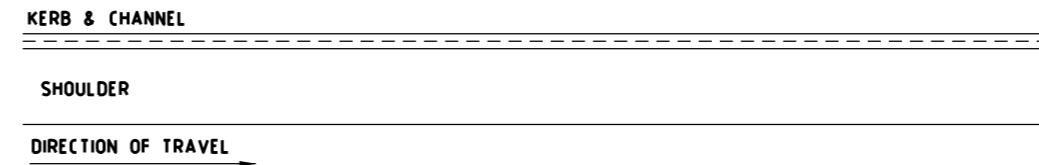
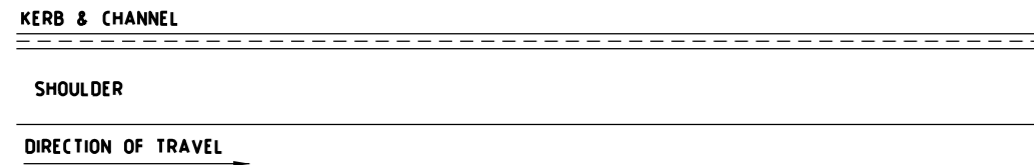
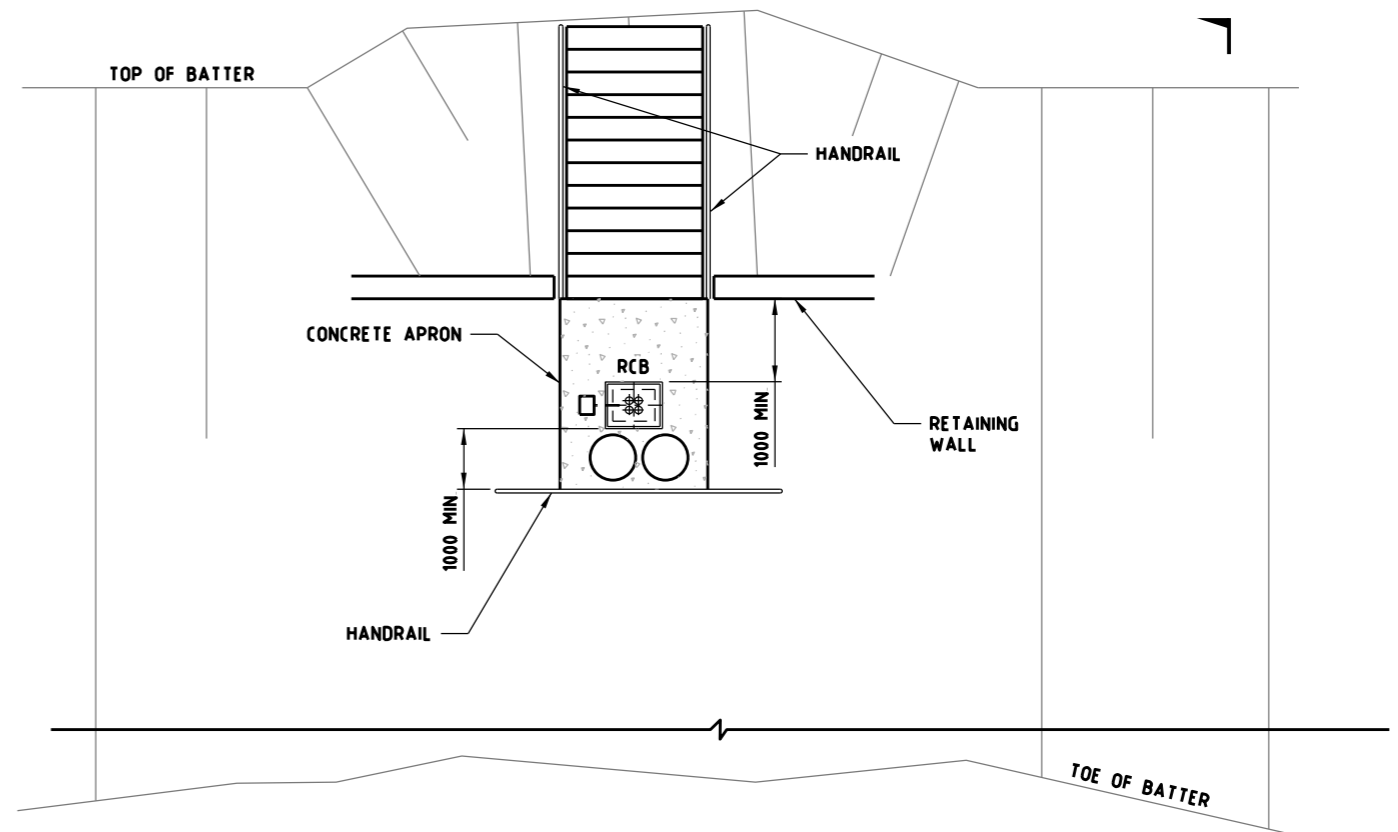
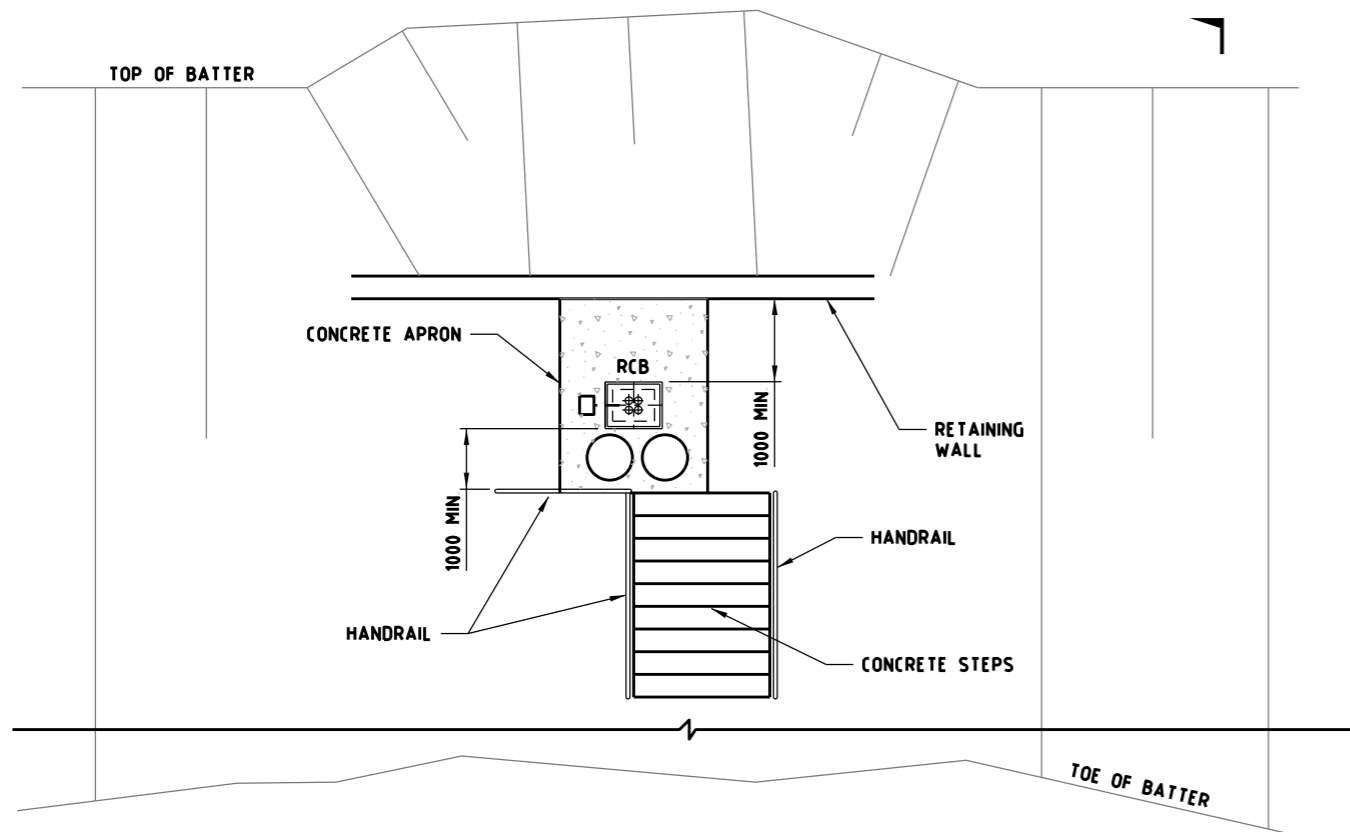
DESIGNED M80 UPGRADE 07/2015  
 APPROVED W HARVEY - MANAGER  
 ITS INFRASTRUCTURE & SYSTEM 08/2015

**vic roads**

CAT: PROJ: FILE: HOR VER: SCALE OF METRES NTS

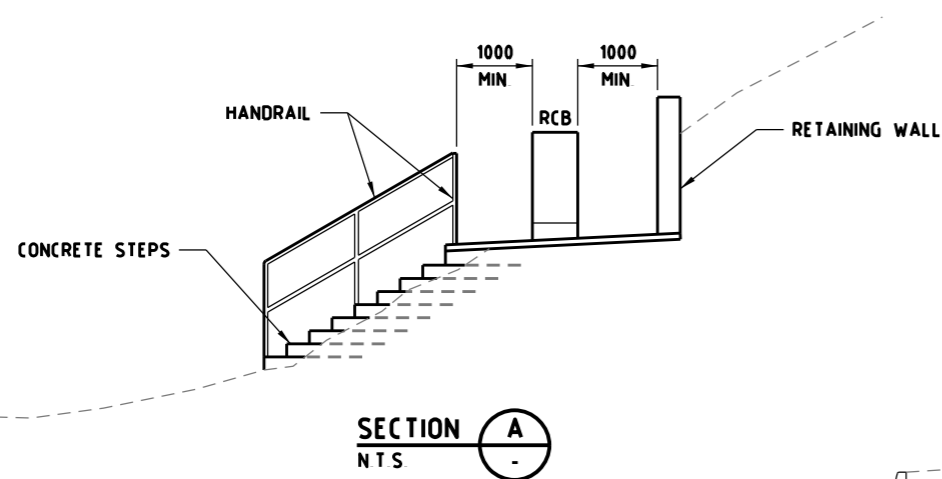
**STANDARD DRAWING**  
 MANAGED MOTORWAY  
**CABINET AND POST FOUNDATIONS**  
 RC3 / TT3 POLE SPREAD FOOTING TYPE 2  
 TYPICAL ARRANGEMENT

FILE NO	CONTRACT NO	SHEET NO	DRAWING NO	ISSUE
			TC-2236	A



**ACCESS TO ITS FIELD CABINET FROM TOE OF BATTER**

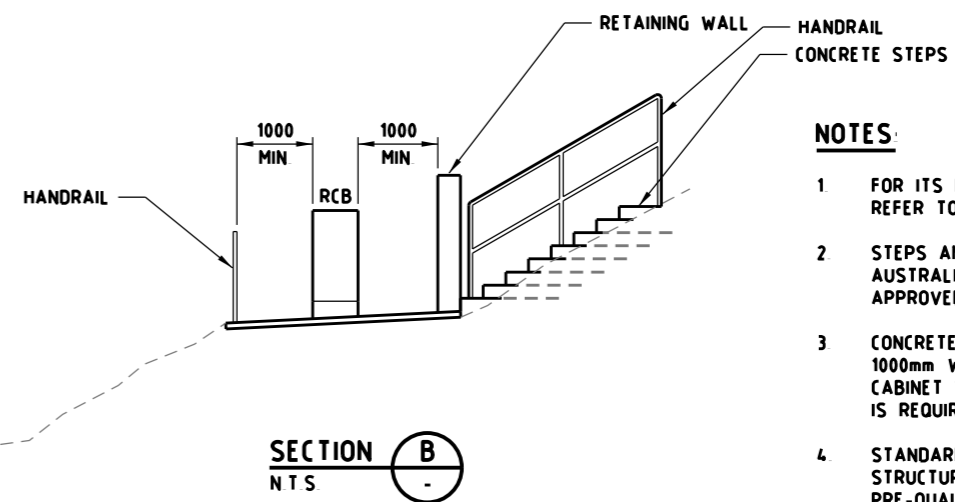
PLAN  
NTS



SECTION A  
NTS

**ACCESS TO ITS FIELD CABINET FROM TOP OF BATTER**

PLAN  
NTS



SECTION B  
NTS

**NOTES:**

- 1 FOR ITS FIELD CABINET AND PIT DETAILS, REFER TO STANDARD DRAWING TC-2230
- 2 STEPS AND HANDRAILS SHALL COMPLY WITH AUSTRALIAN STANDARD AS 1657 DESIGN TO BE APPROVED BY VICROADS PRIOR CONSTRUCTION
- 3 CONCRETE APRON SHALL ALSO BE A MINIMUM OF 1000mm WIDE ALONG ANY OTHER SIDE OF THE CABINET WHERE A RETAINING WALL OR HANDRAIL IS REQUIRED AND IS NOT SHOWN
- 4 STANDARD DRAWINGS SHOWN ARE INDICATIVE ONLY STRUCTURAL DETAILS SHALL BE DESIGNED BY A PRE-QUALIFIED CONSULTANT TO THE SATISFACTION OF VICROADS AND SHALL COMPLY WITH VICROADS' SPECIFICATION BRIDGE TECHNICAL NOTES (BTN'S) AND AS 5100 WHERE APPLICABLE

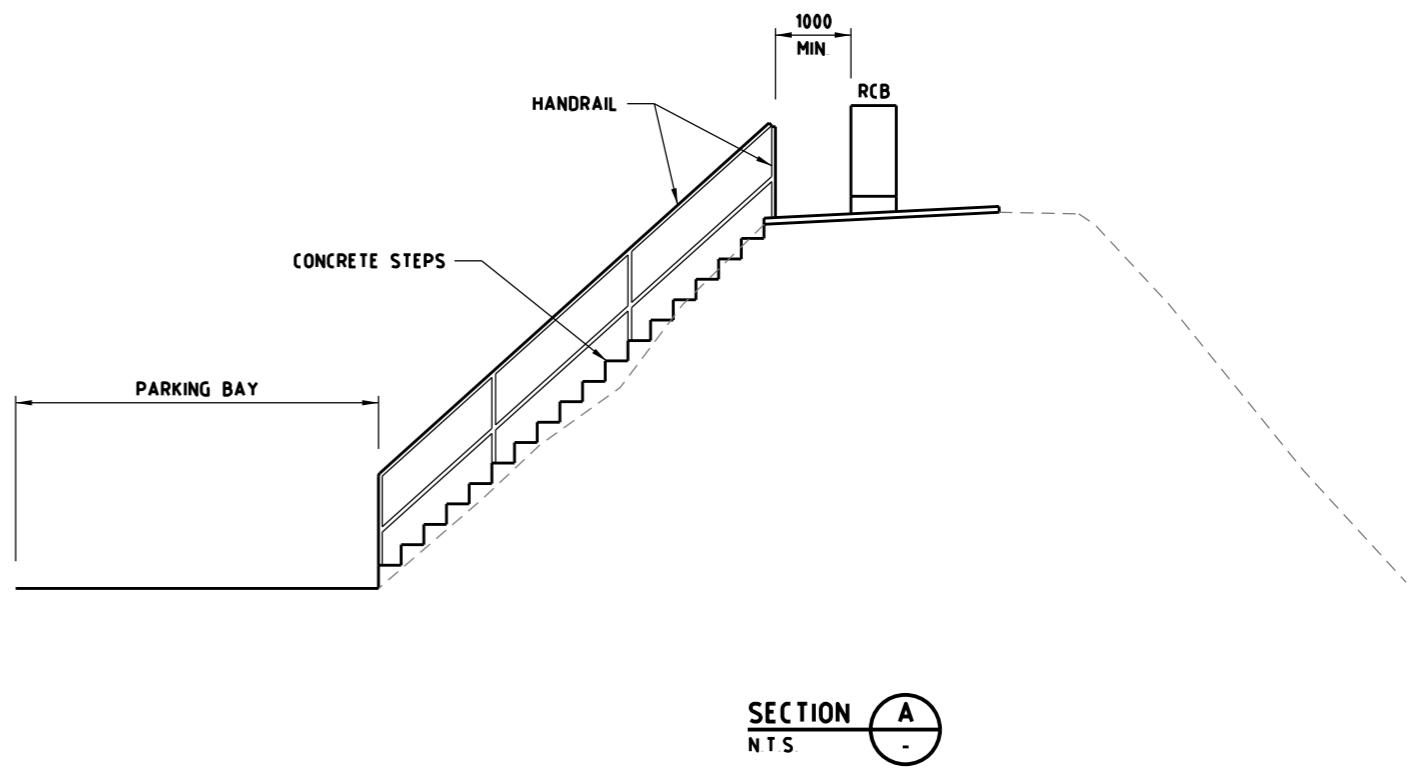
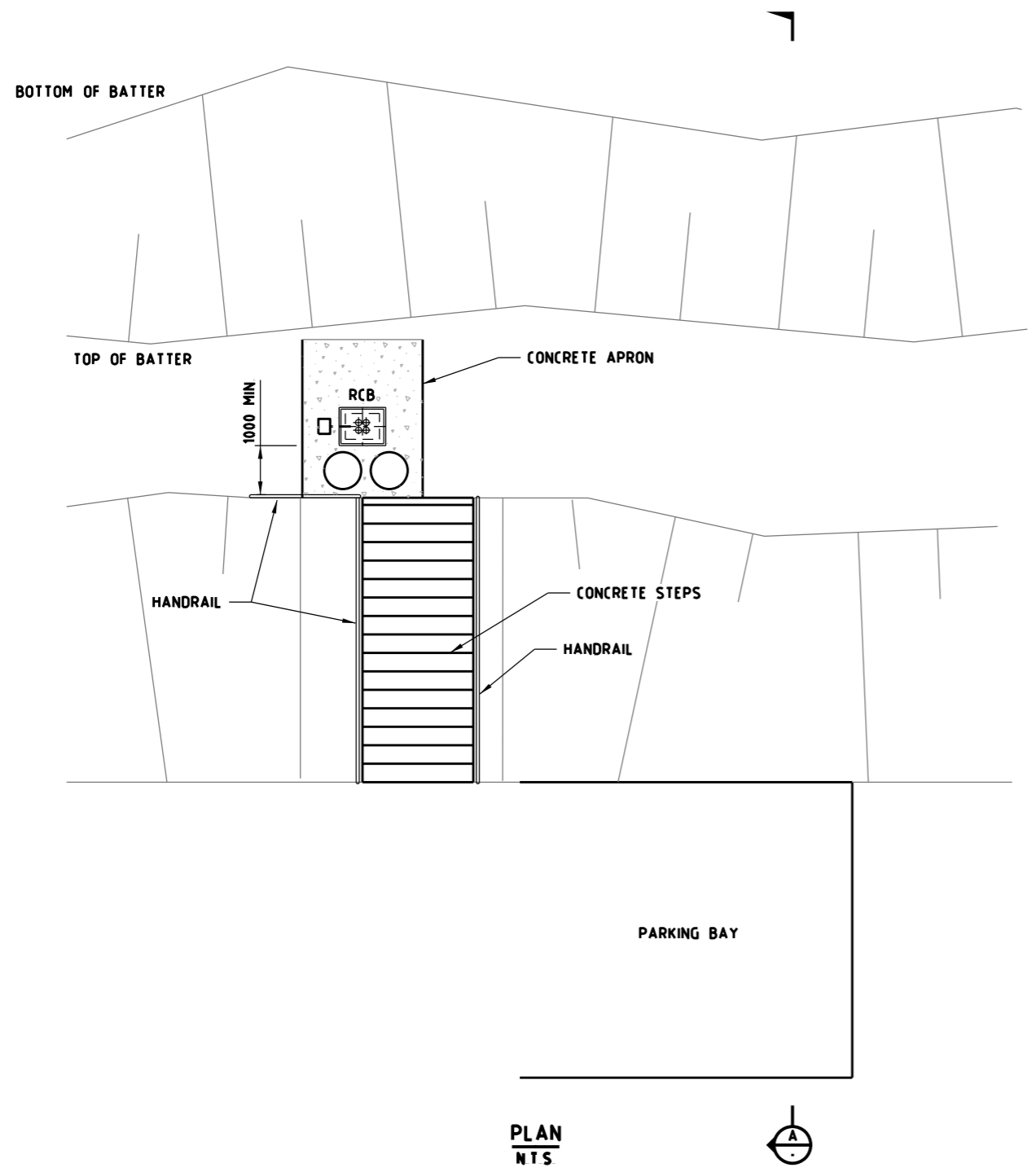
E			
D			
C			
B			
A	W H	12/2018	REVISION OF DETAIL
ISSUE	APP'D	DATE	AMENDMENT

GENERAL NOTES	

DESIGNED	M80 UPGRADE	07/2015
APPROVED	W HARVEY - MANAGER	
	ITS INFRASTRUCTURE & SYSTEM 08/2015	
CAT:		SCALE OF METRES
PROJ:		NTS
FILE		HOR
		VER



<b>STANDARD DRAWING</b>				
MANAGED MOTORWAY				
<b>CABINET AND POST FOUNDATIONS</b>				
SITE LAYOUT FOR ITS FIELD CABINETS LOCATED ON BATTERS - TYPICAL ARRANGEMENT				
FILE NO	CONTRACT NO	SHEET NO	DRAWING NO	ISSUE
			TC-2237	A



**NOTES:**

1. FOR ITS FIELD CABINET AND PIT DETAILS, REFER TO STANDARD DRAWING TC-2230
2. STEPS AND HANDRAILS SHALL COMPLY WITH AS 1657 DESIGN TO BE APPROVED BY VICROADS PRIOR CONSTRUCTION
3. STANDARD DRAWINGS SHOWN ARE INDICATIVE ONLY STRUCTURAL DETAILS SHALL BE DESIGNED BY A PRE-QUALIFIED CONSULTANT TO THE SATISFACTION OF VICROADS AND SHALL COMPLY WITH VICROADS' SPECIFICATION BRIDGE TECHNICAL NOTES (BTN'S) AND AS 5100 WHERE APPLICABLE

E			
D			
C			
B			
A	W H	12/2018	REVISION OF DETAIL
ISSUE	APP'D	DATE	AMENDMENT

GENERAL NOTES

DESIGNED M80 UPGRADE 07/2015

APPROVED W HARVEY - MANAGER  
ITS INFRASTRUCTURE & SYSTEM 08/2015

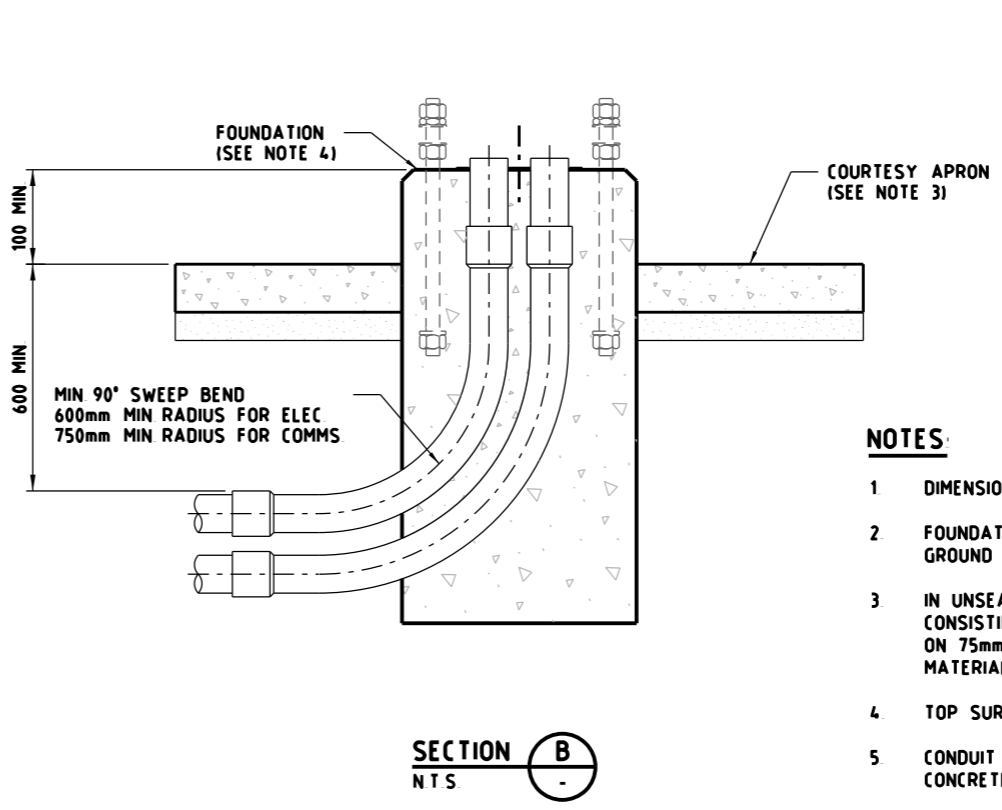
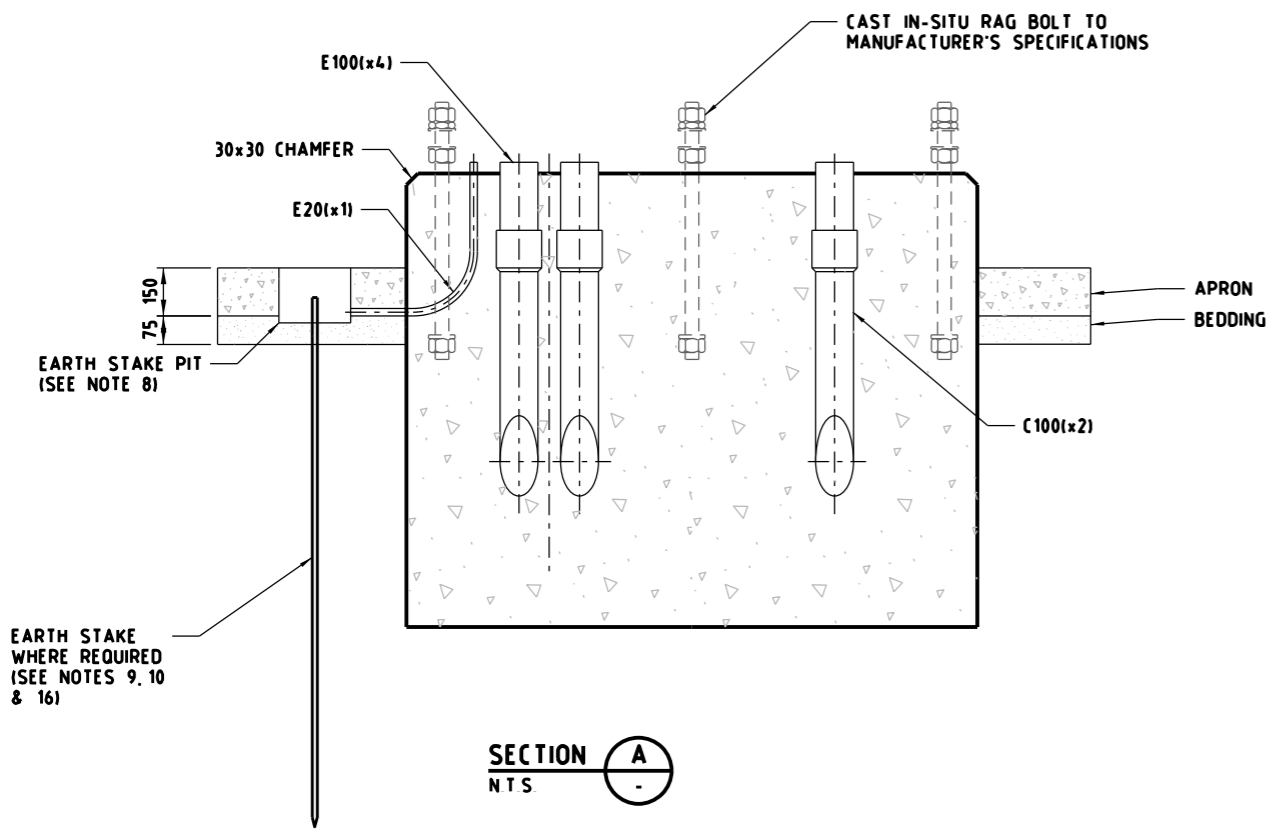
CAT: PROJ: FILE: HOR VER:

SCALE OF METRES NTS

**STANDARD DRAWING**  
MANAGED MOTORWAY  
**CABINET AND POST FOUNDATIONS**  
PEDESTRIAN SAFETY FENCE ARRANGEMENT FOR ITS FIELD CABINETS - TYPICAL ARRANGEMENTS

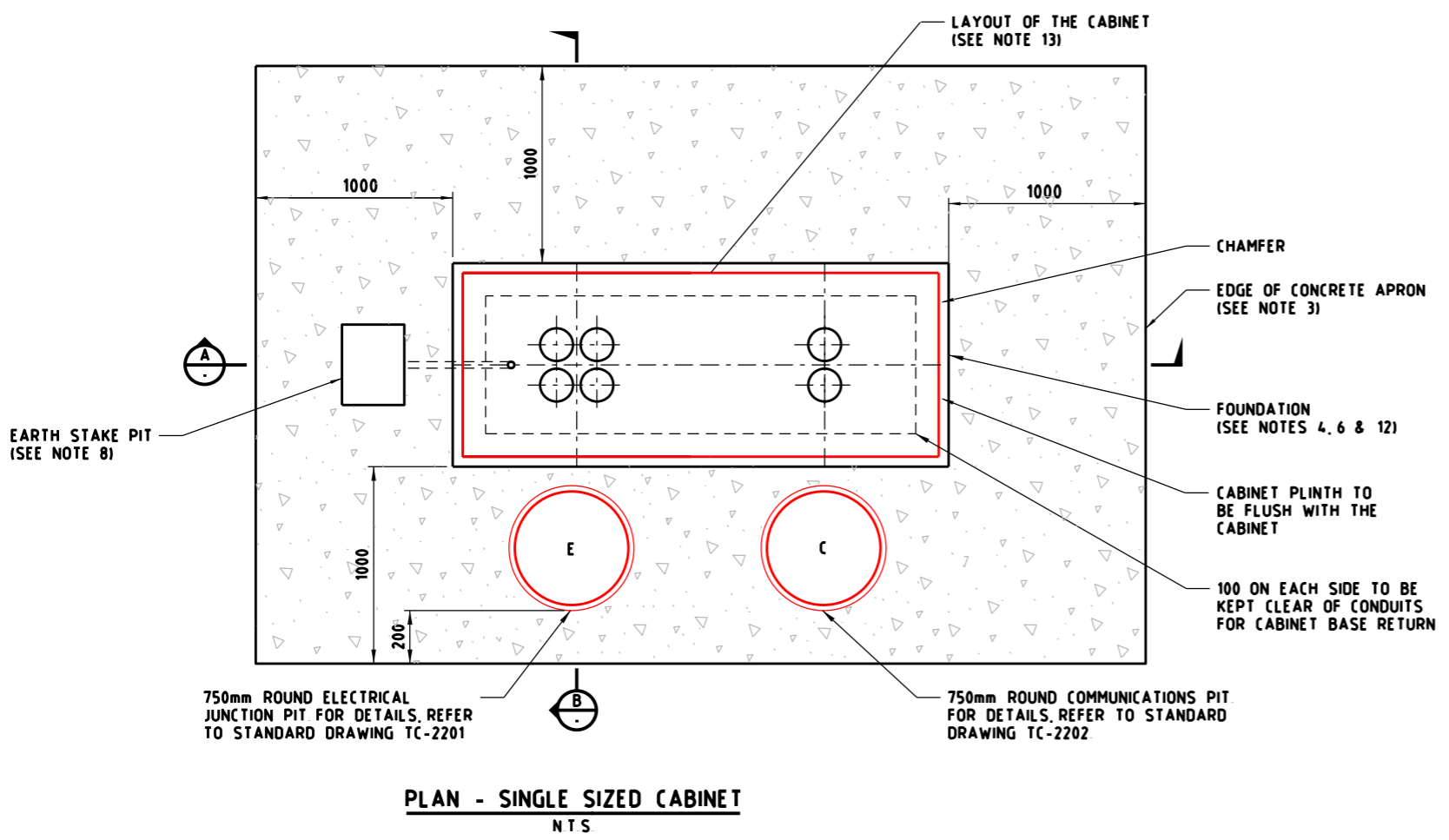
FILE NO	CONTRACT NO	SHEET NO	DRAWING NO	ISSUE
			TC-2238	A





**NOTES**

- 1 DIMENSIONS SHOWN ARE IN MILLIMETERS, UNLESS NOTED OTHERWISE
- 2 FOUNDATION TO BE DESIGNED IN ACCORDANCE WITH AS5100 TO SUIT GROUND AND SITE CONDITIONS
- 3 IN UNSEALED AREAS, A COURTESY APRON SHALL BE PROVIDED CONSISTING OF 150mm THICK CONCRETE GRADE N32 WITH S182 MESH ON 75mm COMPACTED BEDDING BEDDING MATERIAL TO BE CRUSHED ROCK MATERIAL WITH CBR10 CONCRETE AS PER STANDARD SECTION 703
- 4 TOP SURFACE OF PLINTH TO BE TRUE HORIZONTAL
- 5 CONDUIT STUBS SHALL PROTRUDE 20mm TO 30mm ABOVE THE CONCRETE FOOTING
- 6 ROADSIDE INFRASTRUCTURE OR VEGETATION CLEARANCE OF 1000mm MUST BE MAINTAINED IN FRONT AND BEHIND THE CABINET
- 7 FOUNDATION TO BE MINIMUM CLEARANCE OF 1000mm TO BACK OF KERB AND 200mm FROM BUILDING LINES, POLES ETC
- 8 EARTH STAKE PIT, (245mm x 190mm x 215mm DEEP, C/W LOCKABLE LID) TO BE INSTALLED IN APRON AT SIDE OF CABINET BASE. POSITION WILL BE DEPENDANT UPON MAINS ENTRY
- 9 EARTH STAKE TO COMPLY WITH AS/NZS3000
- 10 EARTH STAKE ONLY REQUIRED IF THIS CABINET IS A MAIN SWITCHBOARD, OR SUPPLIED FROM A LONG DISTANCE WITH NO EARTH CABLE FROM THE MAIN SWITCHBOARD, TO BE APPROVED BY VICROADS
- 11 CONDUITS TO BE CAPPED IF NOT USED
- 12 MAINTAIN 1000mm MINIMUM BETWEEN CABINETS IN LOCATIONS WHERE MULTIPLE CABINETS ARE LOCATED SIDE BY SIDE CONCRETE APRON TO BE EXTENDED BETWEEN PLINTHS
- 13 FOUNDATION DIMENSIONS AND CONDUIT DETAILS TO BE CONFIRMED WITH CABINET SUPPLIER
- 14 CONDUITS TO BE DIRECTED TOWARDS PITS OR AS REQUIRED TO SUIT SITE LAYOUT PITS TO BE LOCATED IN LINE WITH THE RELEVANT SECTION OF THE CABINET
- 15 THREADED PORTION OF RAG BOLTS TO BE COATED WITH GRAPHITE GREASE OR SIMILAR PRODUCT AND PROTECTED FROM DAMAGE DURING CONSTRUCTION
- 16 WHERE CABINET IS LOCATED APPROX 20m OR LESS FROM HIGH VOLTAGE POWER LINES ADDITIONAL EARTH PROTECTION SHALL BE PROVIDED AND DESIGNED BY A QUALIFIED ELECTRICAL ENGINEER
- 17 ALL WIRING MUST ENTER CABINET VIA APPROPRIATE PIT INSTALLED AT THE BASE OF THE CABINET
- 18 FOR CABINETS LOCATED ON BATTERS, CONCRETE APRON AND ACCESS ARRANGEMENTS TO BE IN ACCORDANCE WITH STANDARD DRAWING TC-2237 AND TC-2238
- 19 APRON AND PITS SHALL NOT POND WATER



E			
D			
C			
B			
A			
ISSUE	APP'D	DATE	AMENDMENT

GENERAL NOTES

DESIGNED M80 UPGRADE 07/2015

APPROVED W HARVEY - MANAGER ITS INFRASTRUCTURE & SYSTEM 08/2015

CAT. PROJ. FILE

SCALE OF METRES NTS

HOR VER

**STANDARD DRAWING**  
MANAGED MOTORWAY

**CABINET AND POST FOUNDATIONS**  
DOUBLE ITS FIELD CABINET FOUNDATION

FILE NO	CONTRACT NO	SHEET NO	DRAWING NO	ISSUE
			TC-2239	-