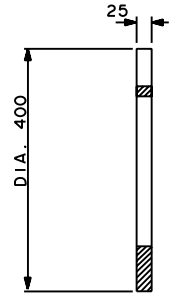
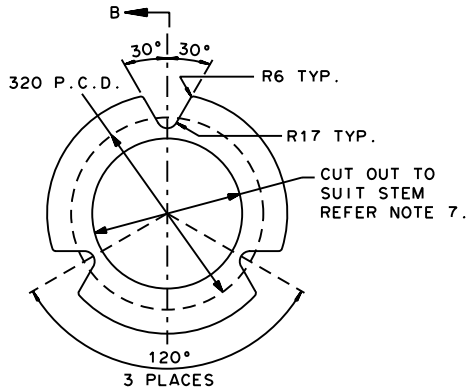


ITEM	QTY.	DESCRIPTION
1	3	BOLT, HEX. HD. M30 x 3.5 x 120 LONG. COMMERCIAL GRADE GALVANISED.
2	6	WASHER, 8 THICK, 60 x 100, GRADE 250 PLATE, GALVANISED, 34 DIA HOLE.
3	3	HALF NUT, HEX. M30 x 3.5, 15 HEIGHT, GALVANISED
4	3	FULL NUT, HEX. M30 x 3.5, 26 HEIGHT, GALVANISED

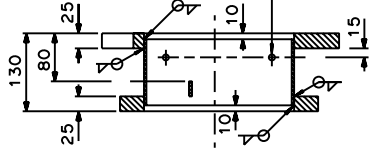


SECTION B - B

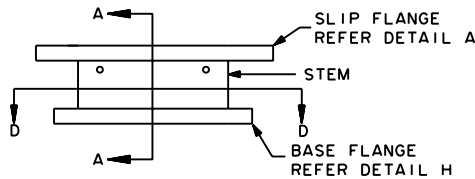


DETAIL 'A' - SLIP FLANGE

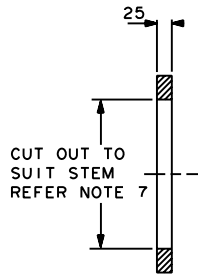
4 DRAIN HOLES
DIA. 10 EQUALLY
SPACED



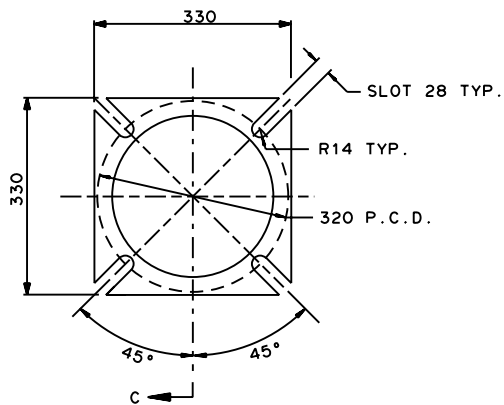
SECTION A-A



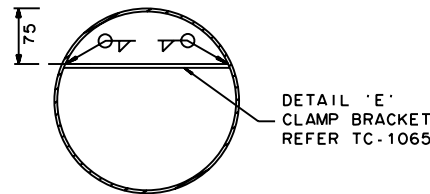
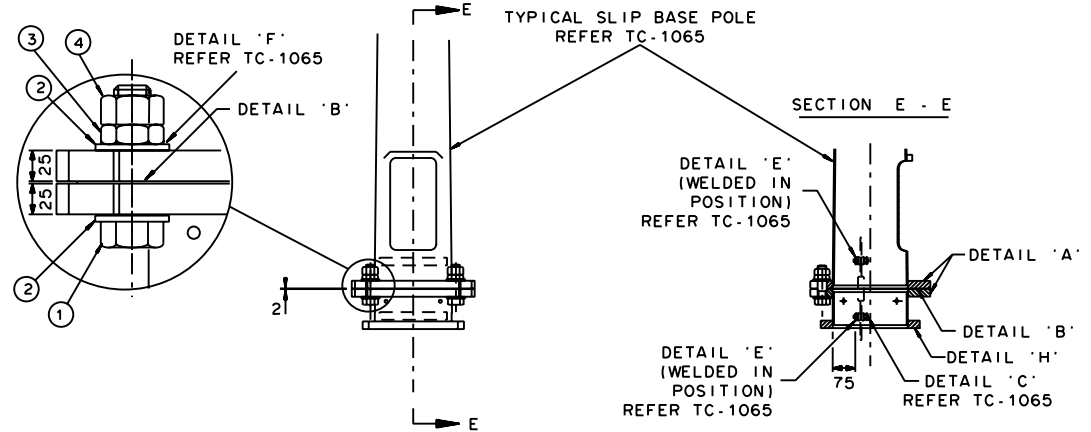
SECTION C - C



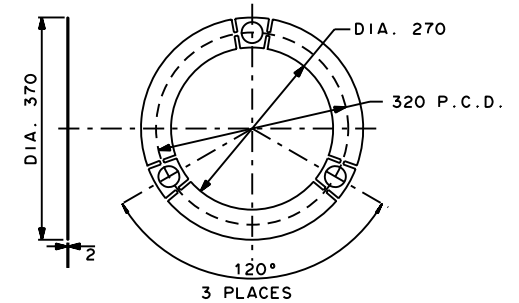
SECTION C - C



DETAIL 'H' - BASE FLANGE



SECTION D - D



SLIP WASHER - REFER TC-1065

NOTES

1. ALL SLOTS AND HOLES ARE TO BE CLEAR OF EXCESS GALVANIZING, METAL BURRS ETC.
2. SLIP BASE BOLT WASHER SHOULD NOT FOUL THE STEM TO SLIP FLANGE WELDS.
3. SLIP FLANGE SURFACES OF FLANGES ARE TO BE FREE OF ANY PROTRUSIONS OR IRREGULARITIES.
4. FOR ALTERNATIVE GROUND SET MOUNTED POLES REFER TO DRAWING No. TC-1065
5. ALL FABRICATION TO BE FINALLY HOT DIP GALVANISED ACCORDING TO AS/NZS 4680, 600 G/msq
6. NUTS AND BOLTS TO BE RE-RUN AFTER GALVANISING
7. MAX. STEM DIA. CONTROLLED BY NEED TO ENSURE CLEARANCE BETWEEN BOLT WASHER AND WELD
8. REFER TO DRAWING No. TC-1601 FOR TYPICAL RAG BOLT ASSEMBLY
9. FOR TIGHTENING OF SLIP BASE BOLTS, REFER TO DRAWING NUMBER TC-1065

AMEND.	Appd.	DATE	AMENDMENTS
E			
D			
C			
B	SP	1/4/08	ITEMS 1, 2 8 3 MODIFIED, ITEM 4 ADDED
A	RS	6/01	AS/NZS STANDARD UPDATED

GENERAL NOTES / CROSS REFERENCES
 UNSPECIFIED DIMENSIONS ARE IN mm.
 MATERIAL M.S. EXCEPT WHERE OTHERWISE SPECIFIED.
 TOLERANCE UNLESS OTHERWISE SPECIFIED:
 MACHINED DIM. +/- . . .
 ANGULAR +/- 1 deg.
 FABRICATED DIM. +/- . 2.
 TO BE READ IN CONJUNCTION WITH TC-1065 AND
 SPECIFICATION TCS-014



INTELLIGENT TRANSPORT
SYSTEMS GROUP

STANDARD DRAWING STREET LIGHTING TRANSITION BASE ASSEMBLY FOR SLIP BASE POLE - PLATE SET MOUNTED									
CHECKED	DATE	APPROVED	DATE	SPEC. REF.	SHEET No.	DRAWING No.	AMENDMENT		
R.S	05/98	B. HEARN	8/5/98			TC-1066	B		
		MANAGER ITS							