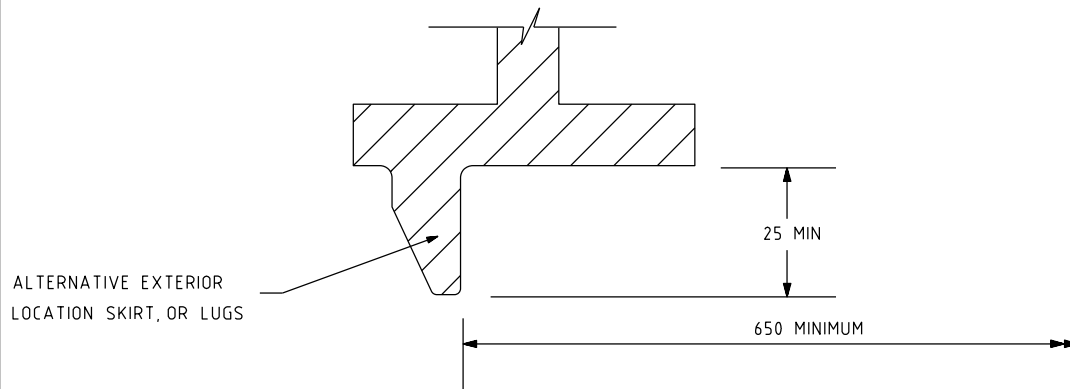
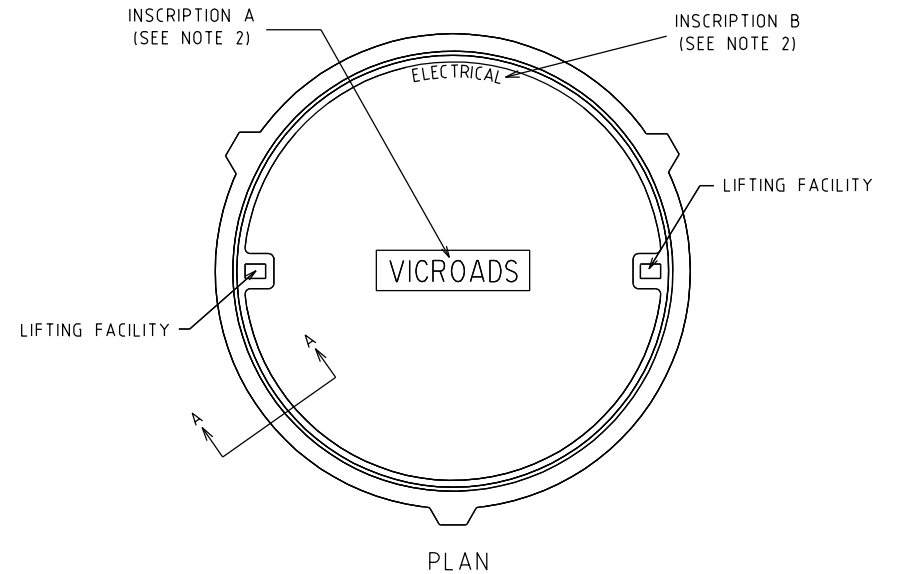


TYPICAL SECTION A - A (INTERNAL SKIRT)



TYPICAL SECTION A - A (EXTERNAL SKIRT)



PLAN

NOTES:

- PIT ACCESS COVER AND FRAME TO COMPLY WITH AS 3996 - CLASS B UNSEALED (STANDARD); SOLID TOP OR RECESSED WITH CONCRETE OR OTHER FILL.
- INSCRIPTIONS ON THE COVER ARE TO BE CAST, IMPRESSED OR AFFIXED BY AN APPROVED METHOD AND BE OF HIGH DURABILITY AND LEGIBILITY. UNLESS OTHERWISE SPECIFIED, THE TEXT SHALL BE IN UPPER CASE LETTERING MINIMUM 20 HIGH. THE REQUIRED INSCRIPTION MUST BE SPECIFIED WHEN ORDERING.

INSCRIPTION "A" OPTIONS:

- "A1" = "VICROADS"
- "A2" = "OTHER INSCRIPTION AS SPECIFIED"

INSCRIPTION "B" OPTIONS:

- "B1" = "ELECTRICAL" or "ELEC"
- "B2" = "COMMUNICATIONS" or "COMMS"
- "B3" = "TRAFFIC SIGNALS" or "TRAFF SIG"
- "B4" = "OTHER INSCRIPTION AS SPECIFIED"

- PIT LID TOP SURFACE SHALL MEET SKID RESISTANCE REQUIREMENTS FOR CLASS X AS DETAILED IN TABLE 2 OF AS/NZS 4586 FOR SLIP RESISTANCE CLASSIFICATION OF NEW PEDESTRIAN SURFACE MATERIALS

AMEND.	APP'D	DATE	AMENDMENT
C	S.P.	24/04/14	ADDITION OF NOTE 3
B	J.R.	27/8/96	ABBREVIATIONS ADDED TO NOTE 2
A	J.R.	27/8/96	MIN No. OF LUGS DELETED

GENERAL NOTES/CROSS REFERENCES
UNSPECIFIED DIMENSIONS ARE IN mm

INTELLIGENT TRANSPORT SYSTEMS
60 DENMARK STREET KEW, VICTORIA, 3101
PHONE (03) 9854 2111
FAX (03) 9854 2319

CHECKED
S. Purtil 28/5/02
APPROVED
D Zabriszach 28/5/02



THIS DRAWING SUPERSEDES No.s 85 4047 AND 417192					
STANDARD DRAWING					
CABLE PIT ACCESS COVER AND FRAME					
FILE NO.	SPEC. REF.	SHEET NO.	DRAWING NO.	AMEND.	
			TC-1220	C	

SCALE OF METRES
HOR. NOT TO SCALE
VER.