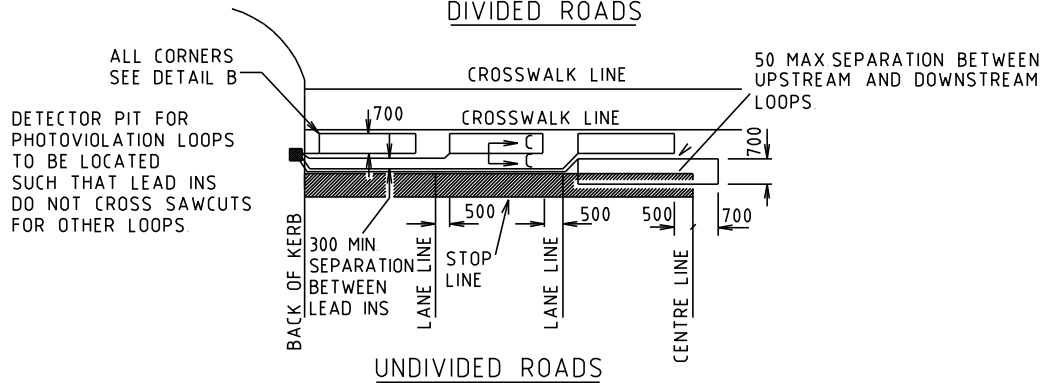


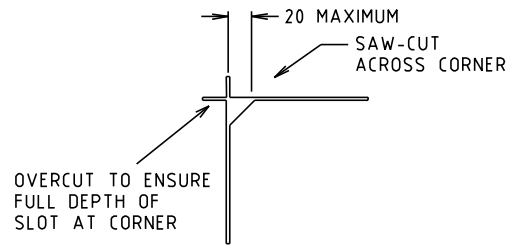
DIVIDED ROADS



UNDIVIDED ROADS

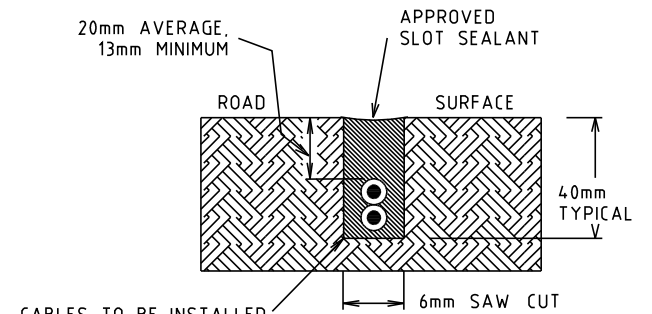
NOTES:

1. LOOP DETECTOR CABLE AND FEEDER CABLE SHALL BE JOINTED IN DETECTOR PIT. EACH JOINT AND TERMINAL MUST BE SEPARATELY INSULATED WITH A HEAT SHRINK CONNECTOR OR OTHER METHODS APPROVED BY THE AUTHORITY TO PREVENT THE INGRESS OF MOISTURE.
2. ALL LOOP CABLE TERMINALS SHALL BE LABELLED WITH CABLE MARKERS. S1, S2, F1, F2, ETC. THE DIGITS OF THE LABEL MARKS THE LOOP NUMBER AS SPECIFIED ON THE AUTHORITY PLAN THE LETTERS S AND F STAND FOR START AND FINISH RESPECTIVELY
3. ALL FEEDER CABLES SHALL BE LABELLED WITH HELAGRIP CABLE MARKERS AS PER LOOP NUMBER SPECIFIED ON THE AUTHORITY PLAN.
4. THE LOOP CABLE SHALL BE CONTINUOUS (I.E NO JOINTS PERMITTED) BETWEEN TERMINALS.

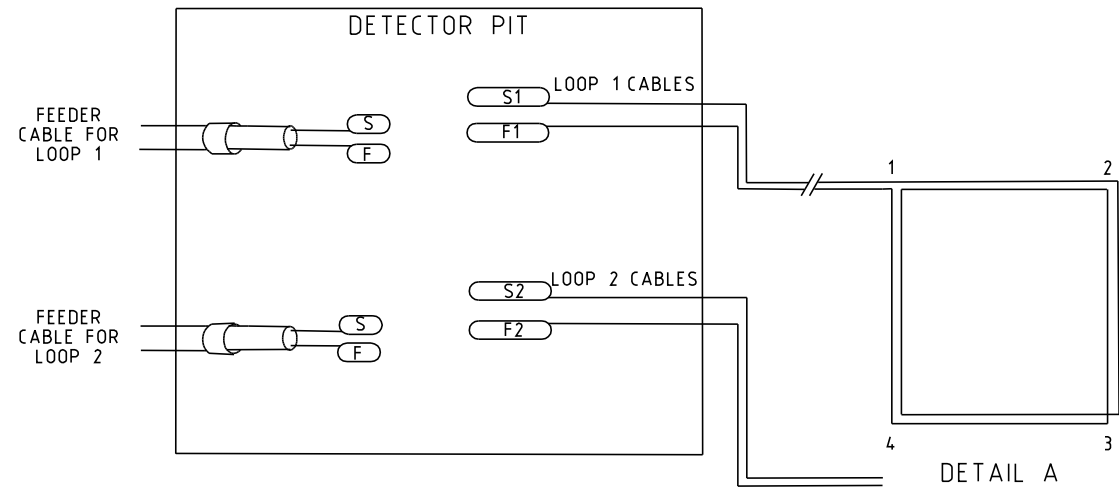


DETAIL B

TYPICAL SAW-CUT AT CORNER



SECTION C-C



TYPICAL WIRING AND CONNECTION OF LOOPS

LOOP CABLES SHALL BE INSTALLED AND FOLLOW THROUGH THE SAW CUTS IN NUMERIC ORDER AS SHOWN IN THE DETAIL A TO CONNECT UP THE COMPLETE LOOP THE FEEDER CABLE AND LOOP CABLE TERMINALS SHALL BE CONNECTED AS FOLLOWS.  
 2 TURN LOOP (FOR LOOP 1) S TO S1, F TO F1.  
 ALL UNTERMINATED CABLES SHALL BE LEFT OPEN CIRCUIT AND SEALED (NOTE 1).  
 CABLES OF THE SAME LOOP SHALL BE TIED TOGETHER BY CABLE TIES

THIS DRAWING SUPERSEEDS No 85 4059B

E				
D				
C				
B				
A	S.B.	29/03/05	MODIFY REQUIREMENTS FOR CORNER OF SAW CUT	
AMEND.	Appd.	DATE	AMENDMENTS	

GENERAL NOTES / CROSS REFERENCES  
 UNSPECIFIED DIMENSIONS ARE IN mm.



STANDARD DRAWING  
 RED LIGHT CAMERA DETECTOR LOOPS

INTELLIGENT TRANSPORT  
 SYSTEMS GROUP

CHECKED DATE  
 L.FRENCH 13.10.00

APPROVED DATE  
 B.HEARN 13.10.00  
 MANAGER ITS

SPEC. REF. SHEET No.

DRAWING No.  
 TC-1361

AMENDMENT  
 A