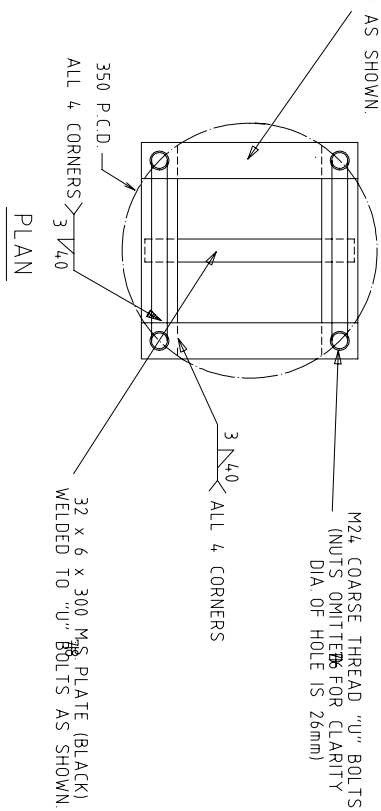
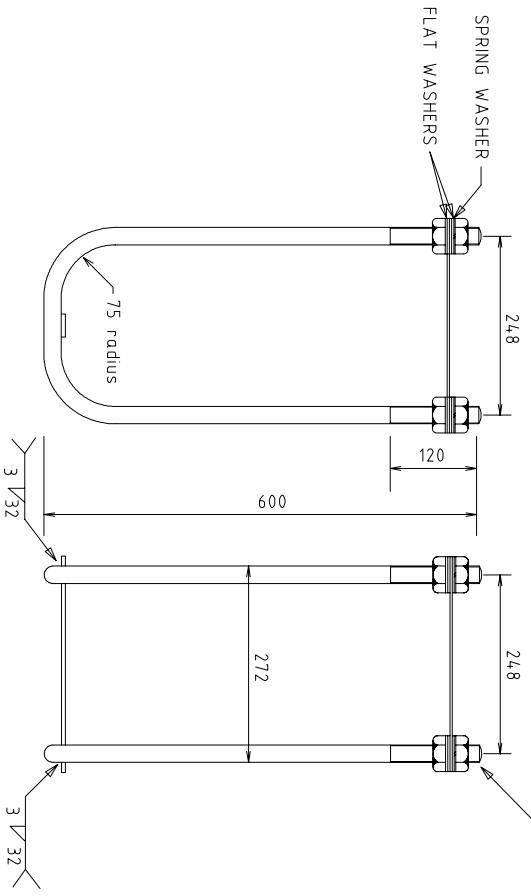


4 MILD STEEL PLATES (BLACK)
50 x 300
WELED AS SHOWN

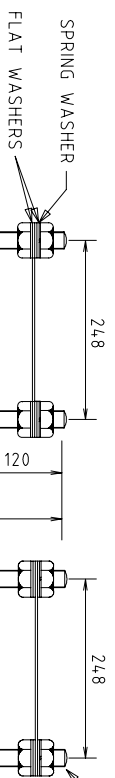


M24 COARSE THREAD "U" BOLTS
(NUTS OMITTED FOR CLARITY
DIA. OF HOLE IS 26mm)

PUNCH ON ALL BOLT ENDS:
CG FOR COMMERCIAL GRADE



COMMERCIAL GRADE BOLTS (TO AS 1111)

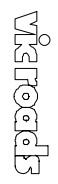


PUNCH ON ALL BOLT ENDS:
HS FOR HIGH STRENGTH GRADE

50 x 3 x 300M S. PLATE
DRILLED 2 x Ø27 DIAMETER
DO NOT WELD HIGH STRENGTH BOLTS

HIGH STRENGTH BOLTS (TO AS 1252)

THIS DRAWING SUPERSEDES DRAWING No.s 85 4021 AND 417190



TRAFFIC AND ROAD USE
MANAGEMENT DEPARTMENT

TRAFFIC SYSTEM OPERATION

STANDARD DRAWING

RAG BOLT ASSEMBLY -
M24 COMMERCIAL AND HIGH STRENGTH GRADE -
600mm x 350mm PCD

CHECKED	DATE	APPROVED	DATE	SPEC. REF.	SHEET No.	DRAWING No.	AMENDMENT
J. RANDALL	14/8/96	B. HEARN	14/8/96			TC-1601	
T.S.O. MANAGER							

AMEND.	Appd.	DATE	AMENDMENTS
E			
D			
C			
B			
A			

GENERAL NOTES / CROSS REFERENCES
1. ALL "U" BOLTS, NUTS & WASHERS TO BE GALVANISED (TO AS 1214)
2. ALL DIMENSIONS IN MILLIMETRES.