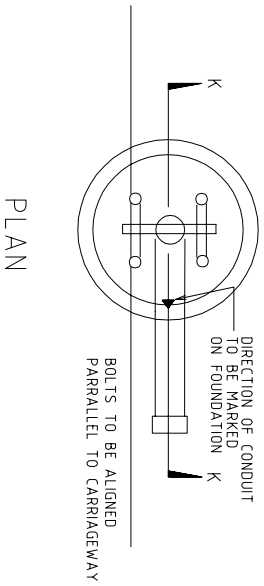


REINFORCEMENT CAGE

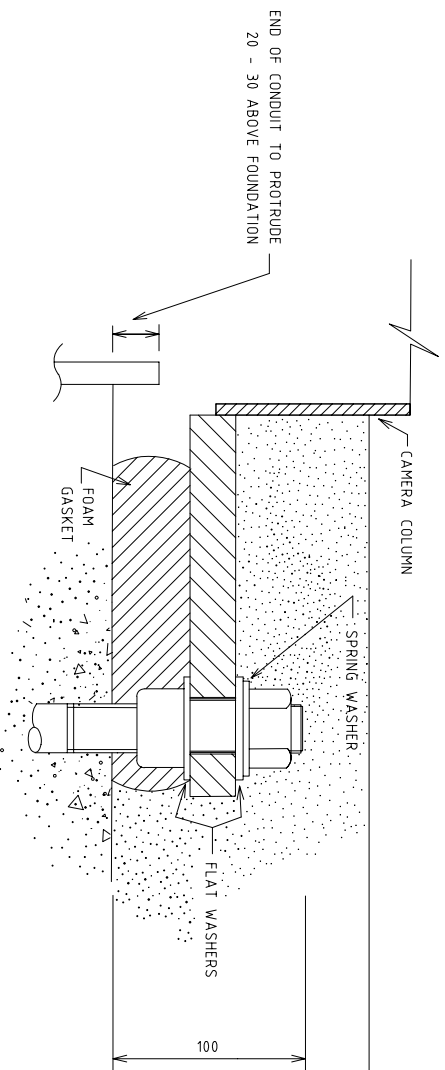


PLAN

- 1 FOUNDATION
- A. SOIL TYPES
- TYPE A - WELL DRAINED SOILS IN UNDULATING OR HILLY COUNTRY (eg STIFF TO VERY STIFF CLAYS, COMPACT TO DENSE SANDS) BEARING CAPACITY OF SOIL EXCEEDS 140 kPa.
 - TYPE B - SOFT TO FIRM CLAYS SATURATED SANDS IN RIVER FLATS AND POORLY DRAINED AREAS. BEARING CAPACITY OF SOIL EXCEEDS 60 kPa.
- B THE FOUNDATION SHALL BE BORED TO THE SPECIFIED SIZE AND CONCRETE CAST AGAINST THE BORED SURFACE TEMPORARY CASING MAY BE USED BUT SHALL BE PROGRESSIVELY WITHDRAWN MAINTAINING BOTTOM OF CASING NOT LESS THAN 300mm BELOW SURFACE OF CONCRETE.
- C ALL EXCAVATIONS SHALL BE FREE FROM LOOSE MATERIAL OR WATER AT THE TIME OF PLACING THE CONCRETE.
- 2 CONCRETE
- A CONCRETE STRENGTH GRADE SHALL BE 25 MPa.
 - B CONCRETE MUST BE VIBRATED WHEN PLACED.

- 3 STEELWORK
- A RAG BOLT ASSEMBLY - M24 COMMERCIAL GRADE
 - B REINFORCEMENT CAGE MATERIALS
20mm DIA AS 1302 GRADE 230S
6.3mm DIA AS 1302 GRADE 230R

SOIL TYPE	PILE DEPTH	CAGE HEIGHT
A	1920	1700
B	2720	2500



GENERAL NOTES / CROSS REFERENCES

TC-2012 CAMERA COLUMN
TC-1601 RAG BOLT ASSEMBLY



TRAFFIC AND ROAD USE
MANAGEMENT DEPARTMENT

TRAFFIC SYSTEM OPERATION

STANDARD DRAWING

CAMERA COLUMN -
BORED PILE FOUNDATION -
INSTALLATION DETAILS

E													
D													
C													
B													
A													
AMEND.	Appd.	DATE		AMENDMENTS		CHECKED	DATE	APPROVED	DATE	SPEC. REF.	SHEET No.	DRAWING No.	AMENDMENT
						J. RANDALL	14/8/96	B. HEARN	14/8/96			TC-2013	
						T.S.O. MANAGER							