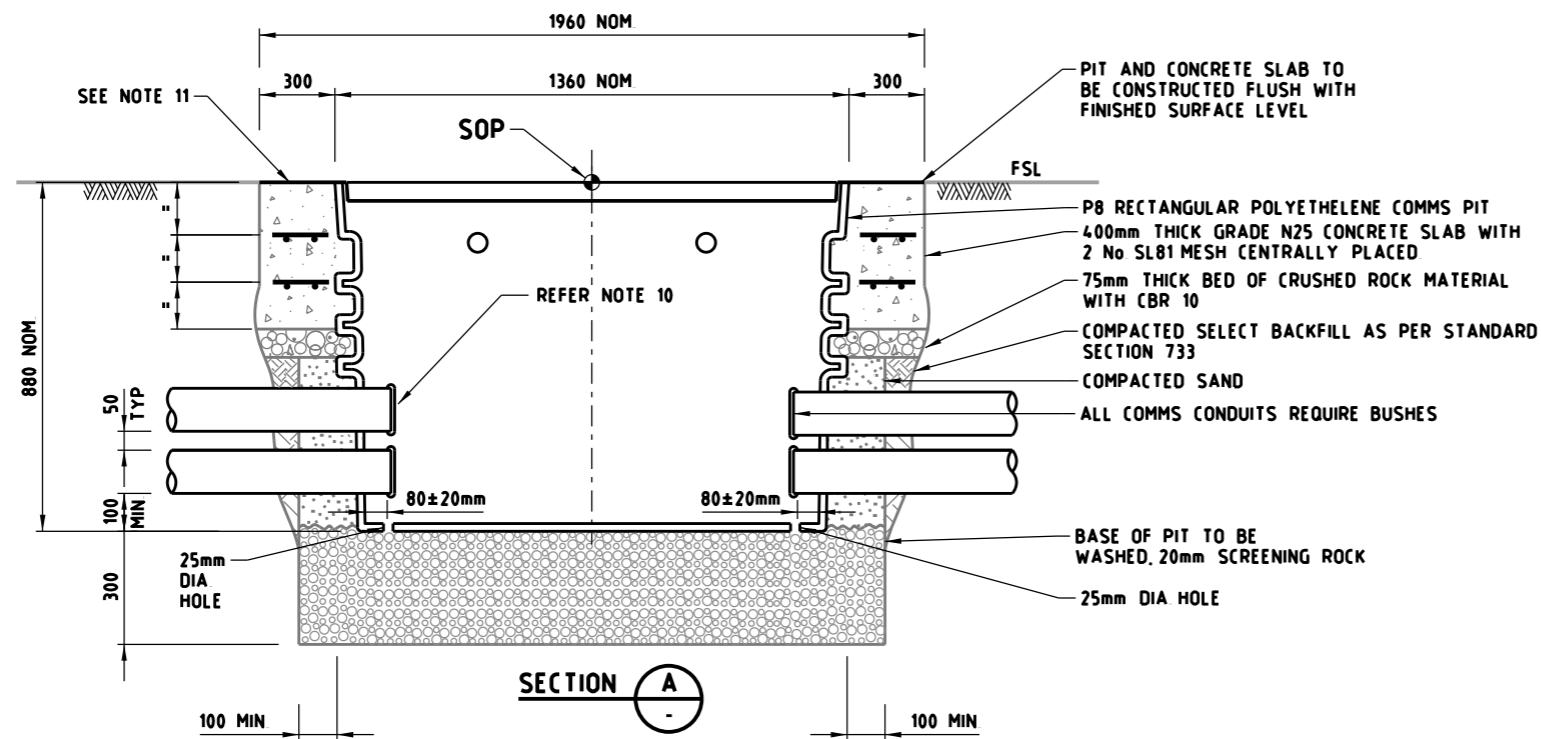
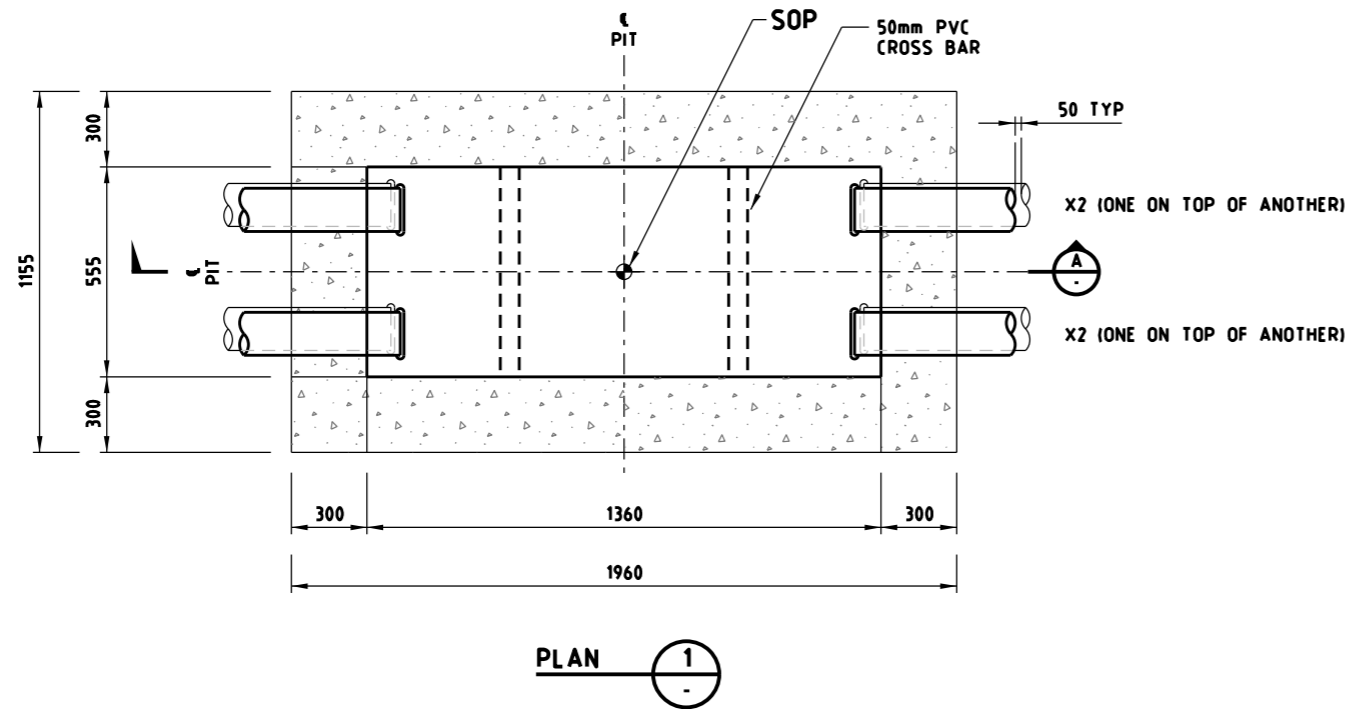


P8 COMMUNICATION PIT



NOTES

- 1 DIMENSIONS SHOWN ARE IN MILLIMETERS, UNO
- 2 ALL CONDUIT ENTRY AND EXIT POINTS INTO PIT WALLS TO BE SEALED WITH CEMENT MORTAR TO PROVIDE A WATERTIGHT SEAL
- 3 ALL PIT LIDS TO BE INSCRIBED IN ACCORDANCE WITH VICROADS STANDARD DRAWING TC 1220 INSCRIPTION TO BE "VICROADS COMMS"
- 4 ENDS OF CONDUITS TO BE TRIMMED NEATLY, FREE FROM SHARP EDGES OR BURRS AND SHALL BE FITTED WITH CONDUIT BUSHES
- 5 ALL VICROADS COMMUNICATION PIT LIDS TO BE LOCKABLE
- 6 CONDUITS MUST NOT ENTER FROM THE BOTTOM OR LONGITUDINAL SIDE OF THE PIT
- 7 CHANGE IN DIRECTION CONDUITS MUST USE A JUNCTION PIT REFER TO STANDARD DRAWING TC-2202
- 8 AVOID DISTORTION SUCH THAT THE DIMENSIONS OF THE PIT REMAIN UNCHANGED
- 9 ALL CONDUIT PROTUSIONS INTO PIT SIDE WALL MUST BE MADE USING A HOLE SAW
- 10 GAP TO BE LARGE ENOUGH TO FIT CONDUIT BUSHES
- 11 CONCRETE SLAB SHALL HAVE THE TYPE AND DIRECTION OF EACH CONDUIT ROUTE INSCRIBED IN IT DURING THE CASTING PROCESS
- 12 THIS DRAWING IS TO BE USED IN CONJUNCTION WITH STANDARD SECTION 733. ALL CONCRETE WORKS AS PER STANDARD SECTION 703

E			
D			
C			
B			
A	WH	12/2018	REVISION OF DETAIL
ISSUE	APP'D	DATE	AMENDMENT

GENERAL NOTES

DESIGNED	M80 UPGRADE	07/2015
APPROVED	W HARVEY - MANAGER ITS INFRASTRUCTURE & SYSTEM 08/2015	
CAT. FILE		
HOR VER	SCALE OF METRES NTS	



STANDARD DRAWING MANAGED MOTORWAY				
PIT AND CONDUIT ARRANGEMENTS P8 COMMUNICATION PIT				
FILE NO	CONTRACT NO	SHEET NO	DRAWING NO	ISSUE
			TC-2203	A