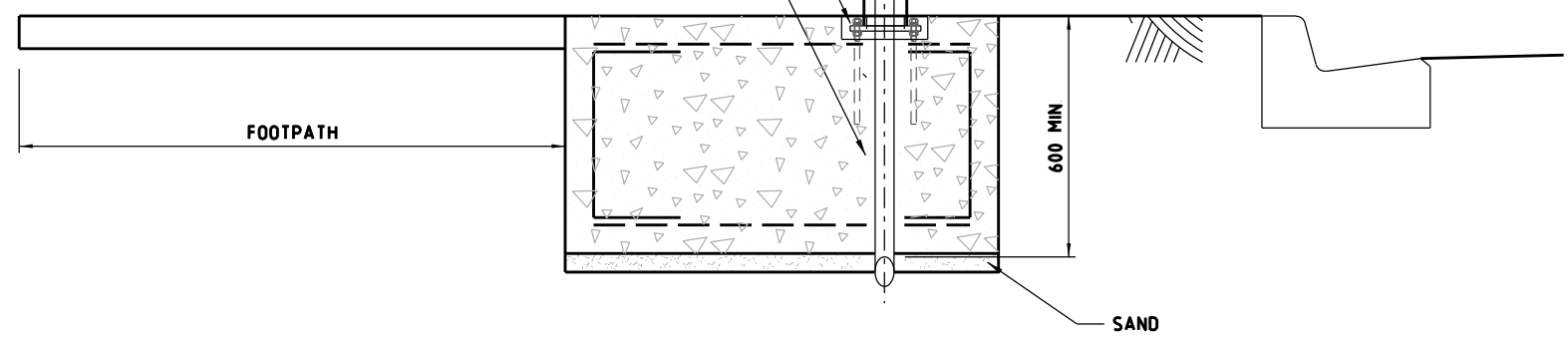
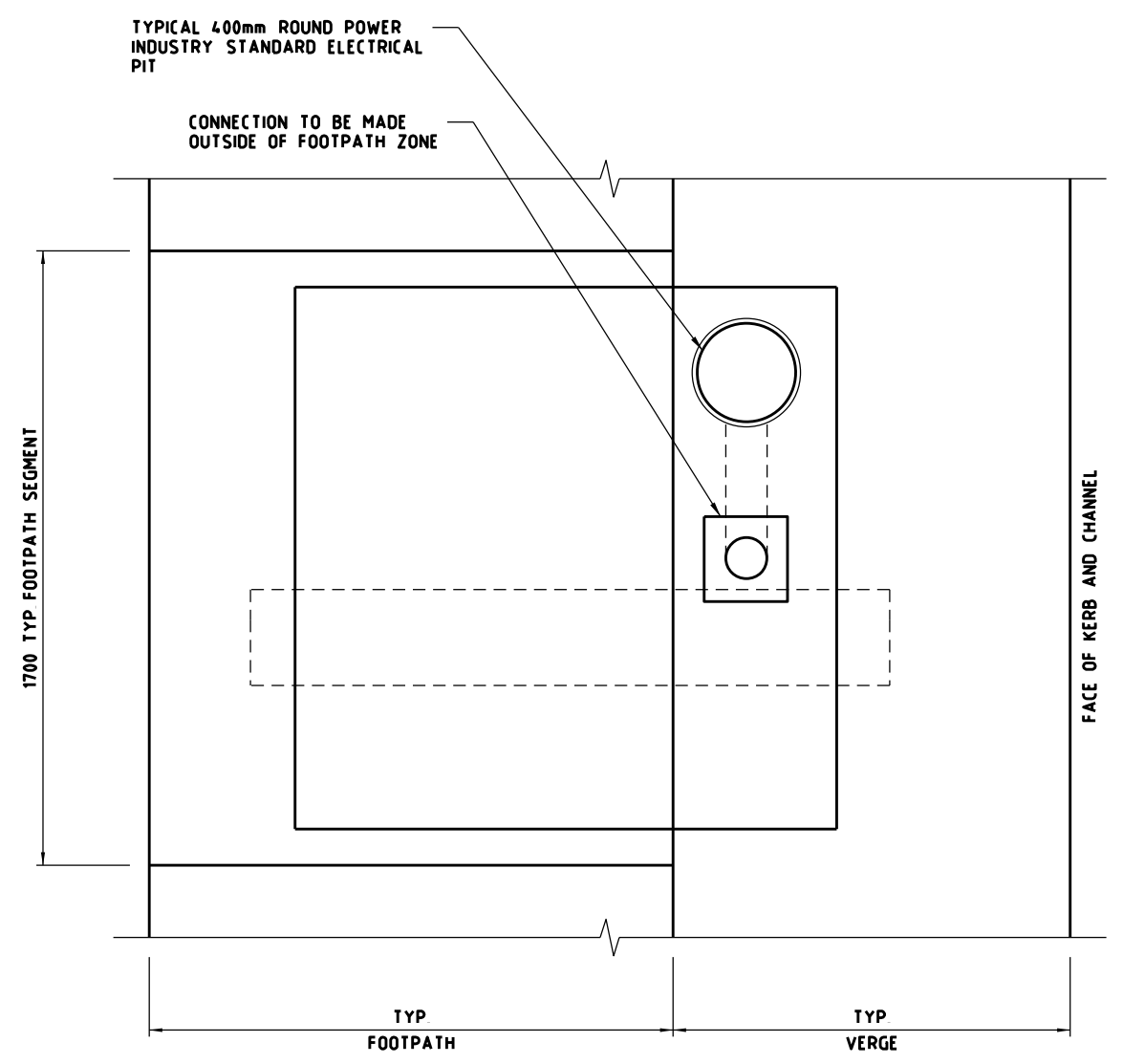


FOR POLE BASE PLATE ARRANGEMENTS REFER TO STANDARD DRAWING TC-2223

E50/E63 TO POS • C50



FOUNDATION DETAIL
N15



LEGEND:

CONDUIT SPECIFICATION (TO AS 2053)
E50/E63 = ELECTRICAL (ORANGE) HEAVY DUTY CONDUIT
C50 = COMMUNICATIONS (WHITE) HEAVY DUTY CONDUIT

NOTES:

- 1 FOUNDATION TO BE DESIGNED IN ACCORDANCE WITH ASS100 TO SUIT GROUND AND SITE CONDITIONS
- 2 FOR HOLD DOWN BOLT DETAILS, REFER TO STANDARD DRAWING TC-1601.
- 3 FOR POLE AND BRACKET DETAILS, REFER TO STANDARD DRAWING TC-2220
- 4 STANDARD DRAWINGS SHOWN ARE INDICATIVE ONLY STRUCTURAL DETAILS SHALL BE DESIGNED BY A PRE-QUALIFIED CONSULTANT TO THE SATISFACTION OF VICROADS AND SHALL COMPLY WITH VICROADS' SPECIFICATION BRIDGE TECHNICAL NOTES (BTN'S) AND AS 5100 WHERE APPLICABLE.

E			
D			
C			
B			
A	WH	12/2018	REMOVAL OF STRUCTURAL DETAIL
ISSUE	APP'D	DATE	AMENDMENT

GENERAL NOTES

DESIGNED M80 UPGRADE 07/2015

APPROVED W HARVEY - MANAGER
ITS INFRASTRUCTURE & SYSTEM 08/2015

CAT. PROJ. FILE

SCALE OF METRES
N15

STANDARD DRAWING
MANAGED MOTORWAY
CABINET AND POST FOUNDATIONS
RC3 / TT3 POLE SPREAD FOOTING TYPE 1
TYPICAL ARRANGEMENT

FILE NO	CONTRACT NO	SHEET NO	DRAWING NO	ISSUE
			TC-2235	A