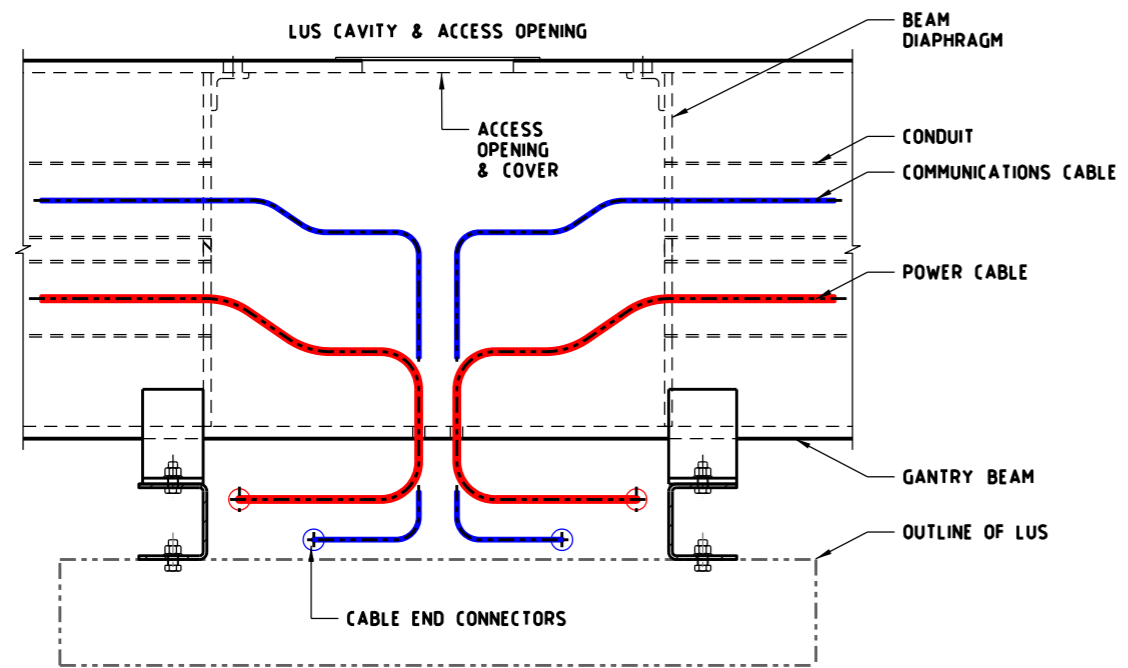


SECTION A
NTS



SECTION B
NTS

LEGEND

BLUE - COMMUNICATIONS CABLE
RED - POWER CABLE

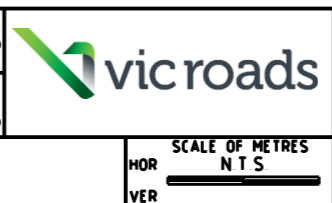
NOTES

- 1 COMMUNICATIONS AND POWER CABLES BETWEEN GANTRY AND SIGN TO BE RUN INSIDE WEATHERPROOF FLEXIBLE CONDUIT WITH MATCHING WEATHERPROOF GLANDS

E			
D			
C			
B			
A	W H	12/2018	REVISION OF DETAIL
ISSUE	APP'D	DATE	AMENDMENT

GENERAL NOTES

DESIGNED M80 UPGRADE 07/2015
APPROVED W HARVEY - MANAGER ITS INFRASTRUCTURE & SYSTEM 08/2015



STANDARD DRAWING MANAGED MOTORWAY				
NON-ACCESSIBLE LUMS GANTRY LUS ELECTRICAL AND COMMUNICATIONS CABLE CONNECTION DETAILS				
FILE NO	CONTRACT NO	SHEET NO	DRAWING NO	ISSUE
			TC-2266	A