

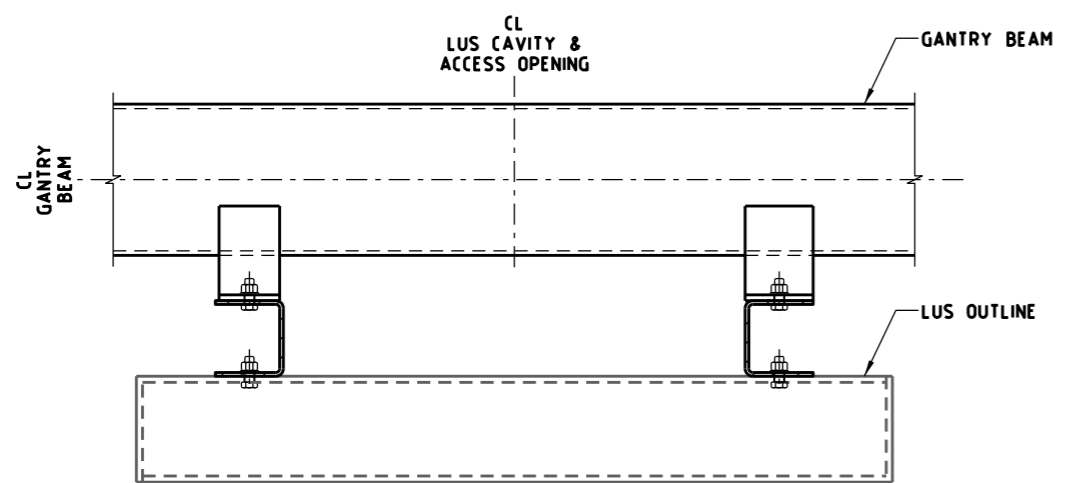
LUS CAVITY AND DIAPHRAGMS
NTS
(APPROACH SIDE)

LUS CAVITY AND DIAPHRAGMS
NTS
(DEPARTURE SIDE)

DEPARTURE SIDE

APPROACH SIDE

SECTION A
NTS



SECTION B
NTS

NOTES

- 1 ALL OPENING EDGES SHALL BE DEBURRED
- 2 CONDUIT AND DIAPHRAGM TO BE FABRICATED STEEL
- 3 STANDARD DRAWINGS SHOWN ARE INDICATIVE ONLY STRUCTURAL DETAILS SHALL BE DESIGNED BY A PRE-QUALIFIED CONSULTANT TO THE SATISFACTION OF VICROADS AND SHALL COMPLY WITH VICROADS' SPECIFICATION BRIDGE TECHNICAL NOTES (BTN'S) AND AS 5100 WHERE APPLICABLE
- 4 LUS MOUNTING BRACKET NOT TO BE VISIBLE FROM APPROACH SIDE

E			
D			
C			
B			
A	W H	12/2018	REMOVAL OF STRUCTURAL DETAIL
ISSUE	APP'D	DATE	AMENDMENT

GENERAL NOTES	

DESIGNED	M80 UPGRADE	07/2015
APPROVED	W HARVEY - MANAGER	
	ITS INFRASTRUCTURE & SYSTEM 08/2015	
CAT:		SCALE OF METRES
PROJ:		NTS
FILE:		HOR
		VER

STANDARD DRAWING MANAGED MOTORWAY				
ACCESSIBLE VMS AND LUMS GANTRY TYPICAL LUS MOUNTING ARRANGEMENT				
FILE NO	CONTRACT NO	SHEET NO	DRAWING NO	ISSUE
			TC-2272	A