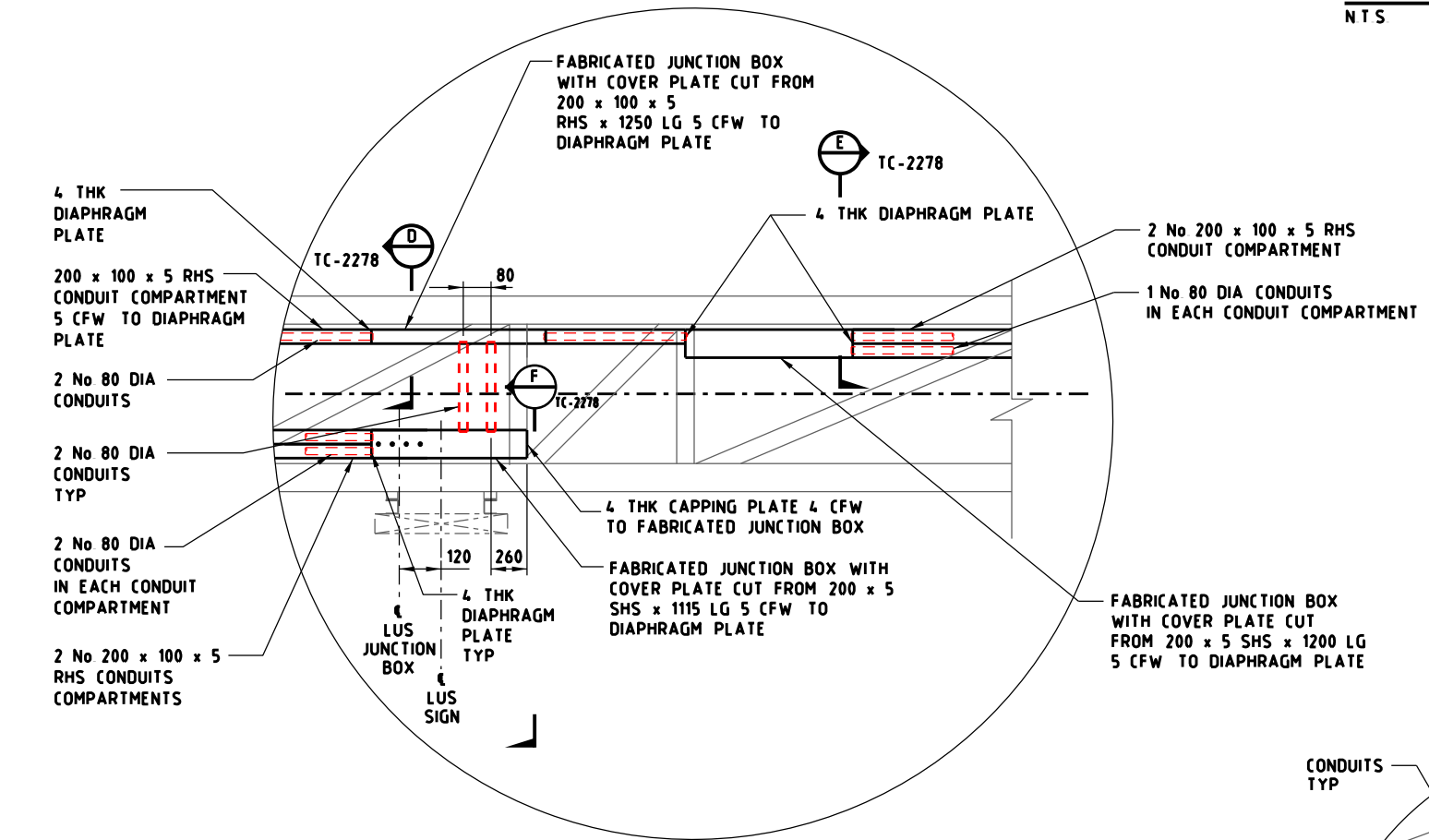
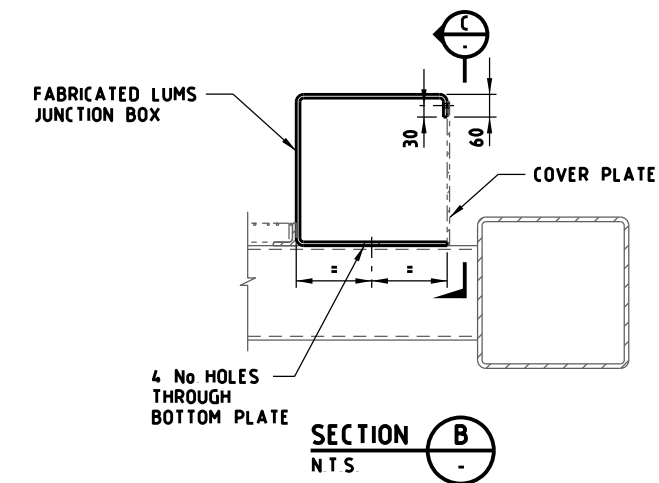


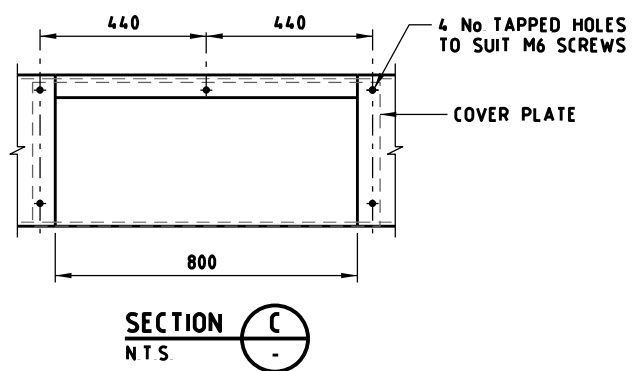
SECTION D
NTS TC-2270



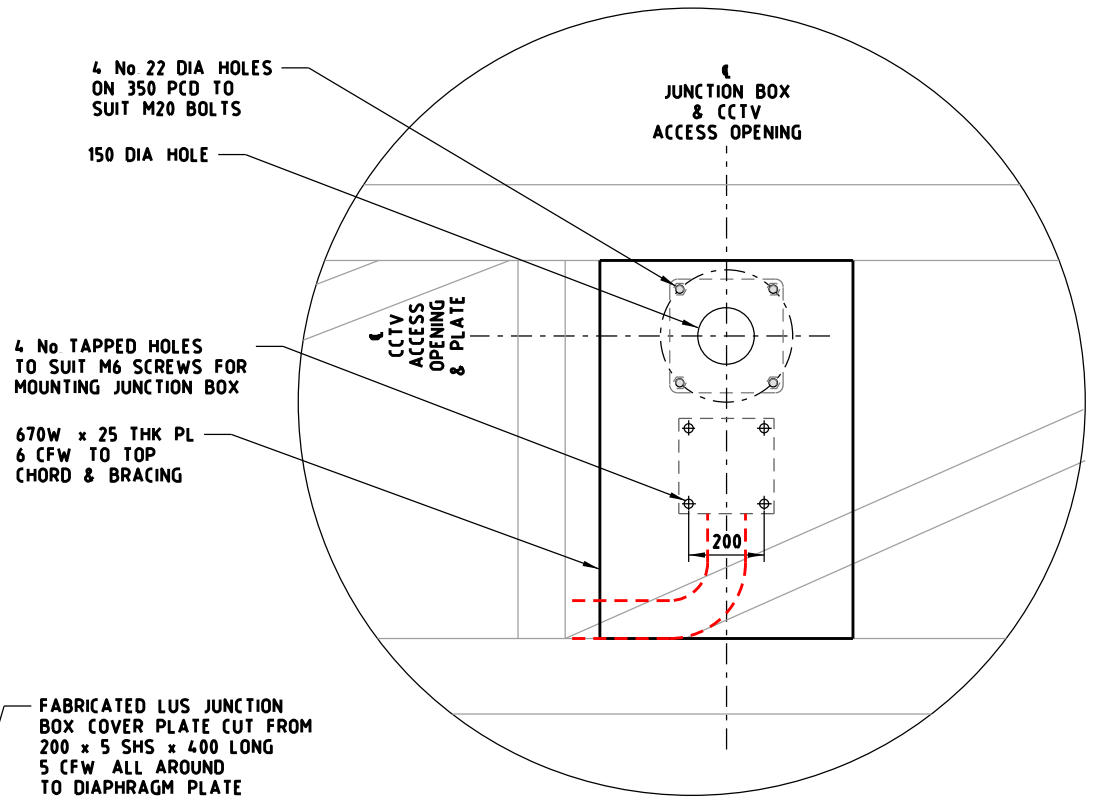
DETAIL 2
NTS TC-2276



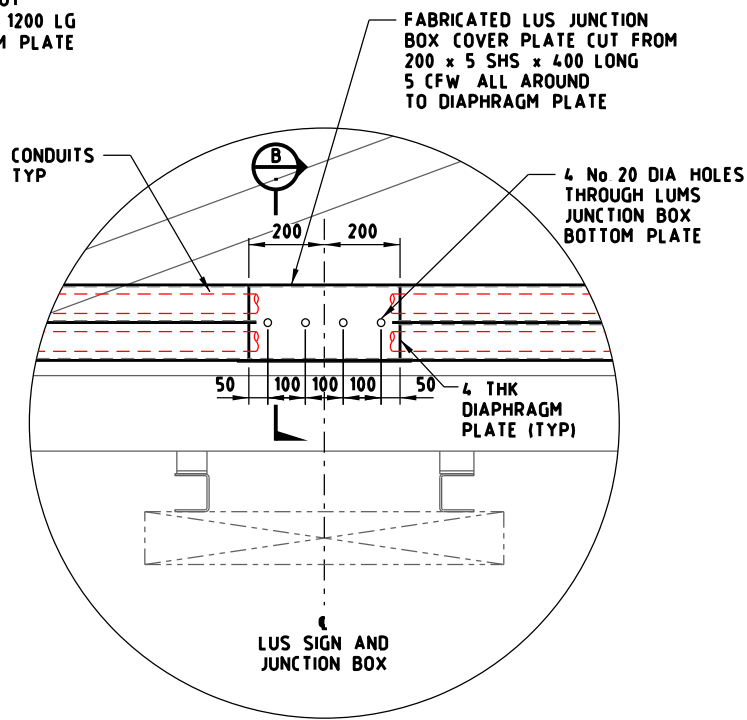
SECTION B
NTS



SECTION C
NTS



DETAIL 3
NTS



DETAIL 1
NTS TC-2276

NOTES:

- FOR GENERAL NOTES REFER TO STANDARD DRAWING TC-2274
- ALL FLEXIBLE CONDUITS CONNECTING STEEL CONDUIT TO STEEL CONDUIT, STEEL CONDUIT TO JUNCTION BOX AND JUNCTION BOX TO JUNCTION BOX SHALL BE ANACONDA TYPE CONDUIT (IE FLEXIBLE METAL INNER WITH A PVC LINER)
- GALVANISED STEEL CONDUITS SHALL EXTEND 10mm BEYOND DIAPHRAGM PLATE, TACK WELDED AND THEN COLD GALVANISE AROUND THE WELDED ENDS
- ALL CONDUITS SHALL BE HIDDEN TO THE ONCOMING TRAFFIC
- ALL JUNCTION BOXES SHALL BE HIDDEN AS MUCH AS PRACTICAL TO THE ONCOMING TRAFFIC
- ALL UNUSED CONDUITS SHALL BE CAPPED
- STANDARD DRAWINGS SHOWN ARE INDICATIVE ONLY STRUCTURAL DETAILS SHALL BE DESIGNED BY A PRE-QUALIFIED CONSULTANT TO THE SATISFACTION OF VICROADS AND SHALL COMPLY WITH VICROADS' SPECIFICATION BRIDGE TECHNICAL NOTES (BTN'S) AND AS 5100 WHERE APPLICABLE

E			
D			
C			
B			
A	W H	12/2018	REVISION OF DETAIL
ISSUE	APP'D	DATE	AMENDMENT

GENERAL NOTES	

DESIGNED	M80 UPGRADE	07/2015
APPROVED	W HARVEY - MANAGER	
ITS INFRASTRUCTURE & SYSTEM 08/2015		
CAT:		SCALE OF METRES
PROJ:		NTS
FILE:		HOR VER



STANDARD DRAWING MANAGED MOTORWAY				
ACCESSIBLE VMS AND LUMS GANTRY TYPICAL CONDUIT ROUTE - SHEET 5 OF 6				
FILE NO	CONTRACT NO	SHEET NO	DRAWING NO	ISSUE
			TC-2277	A