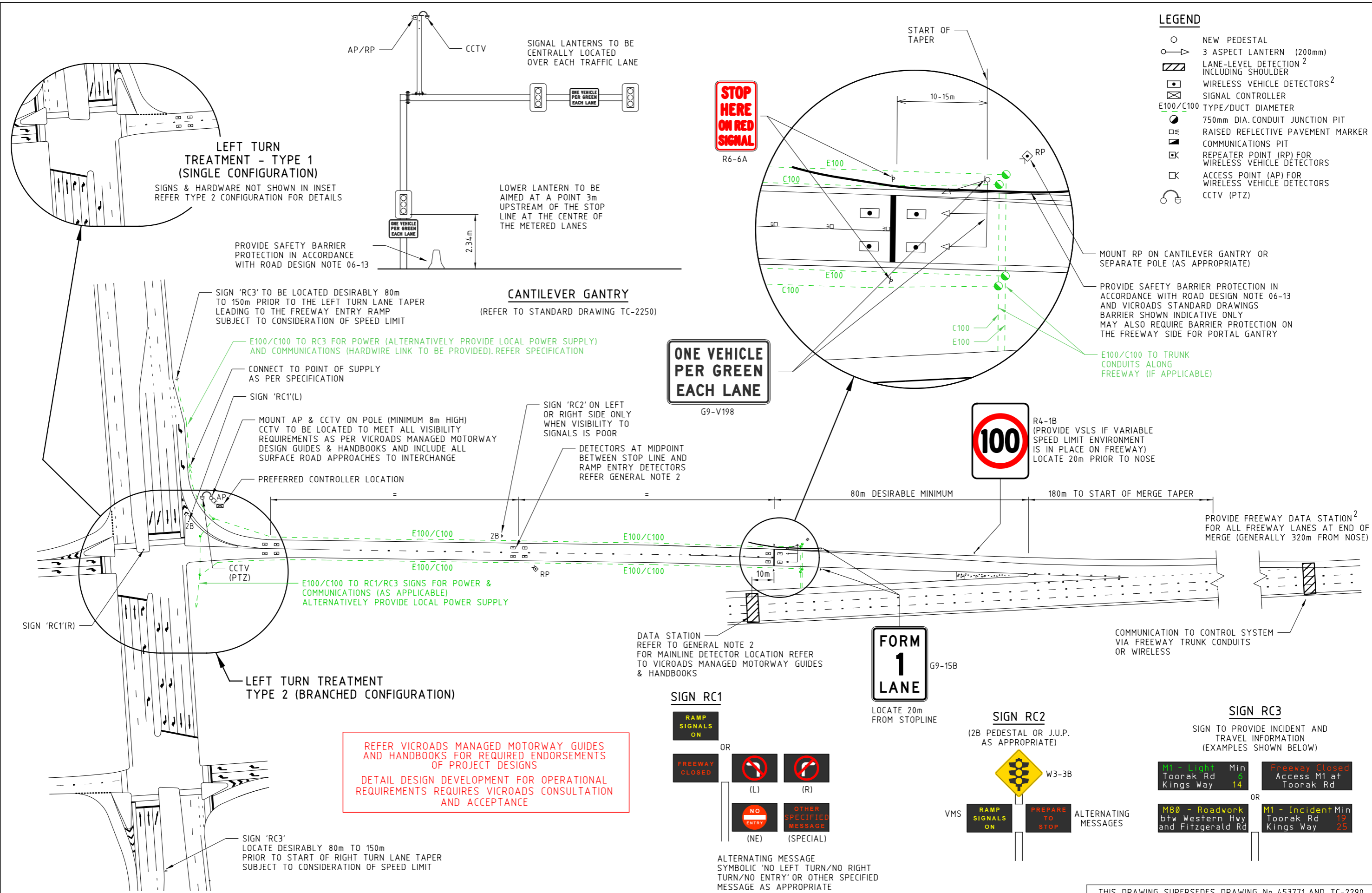


LEGEND

- NEW PEDESTAL
- ⊙ 3 ASPECT LANTERN (200mm)
- ▨ LANE-LEVEL DETECTION² INCLUDING SHOULDER
- ⊠ WIRELESS VEHICLE DETECTORS²
- ⊞ SIGNAL CONTROLLER
- E100/C100 TYPE/DUCT DIAMETER
- ⊙ 750mm DIA. CONDUIT JUNCTION PIT
- ⊞ RAISED REFLECTIVE PAVEMENT MARKER
- ⊞ COMMUNICATIONS PIT
- ⊞ REPEATER POINT (RP) FOR WIRELESS VEHICLE DETECTORS
- ⊞ ACCESS POINT (AP) FOR WIRELESS VEHICLE DETECTORS
- ⊞ CCTV (PTZ)



VICROADS DRAWING No 7204-10

E			
D			
C			
B			
A			VEHICLE DETECTION, NOTES AND OTHER REVIEW
ISSUE	APP'D	DATE	AMENDMENT

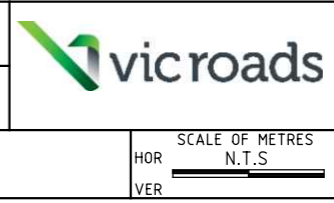
GENERAL NOTES

- LAYOUT DOWNSTREAM FROM THE NOSE IS BASED ON THE STANDARD TREATMENT SET OUT IN VICROADS SUPPLEMENT TO AUSTRROADS GUIDE TO ROAD DESIGN PART 4C. REFER ALSO VICROADS MANAGED MOTORWAY DESIGN GUIDE INCORPORATING FREEWAY RAMP SIGNALS STANDARDS, VICROADS MANAGED MOTORWAY GUIDES, HANDBOOKS AND FRAMEWORK.
- VEHICLE DETECTOR TYPE INDICATIVE ONLY. REFER SPECIFICATION FOR DETAILS
- PREFERRED CONTROLLER LOCATION SHOULD ALSO CONSIDER VISIBILITY OF SIGNALS AND DISTANCE TO SIGNALS (TYPICALLY 275m MAX.) TO ACCOUNT FOR VOLTAGE DROP
- USE OF VERTICAL LOUVRES SHOULD BE CONSIDERED ON SIGNAL LANTERNS VISIBLE FROM THE FREEWAY CARRIAGEWAY
- FOR DETAILS OF OTHER RAMP SIGNS AND PAVEMENT MARKINGS REFER TO TEM VOL. 2
- STANDARDS FOR ALL EQUIPMENT AND INSTALLATION SHALL BE IN ACCORDANCE WITH RELEVANT VICROADS STANDARD DRAWINGS AND SPECIFICATIONS
- UNDERTAKE TESTING OF ALL ITS DEVICES AS PER SPECIFICATIONS

DESIGNED
NETWORK OPTIMISATION
11/04/18

APPROVED
R. FANNING
15/10/18

CAT: Standard Drawings
PROJ: Managed Motorway
FILE: SD6001.dgn



THIS DRAWING SUPERSEDES DRAWING No. 453771 AND TC-2290

STANDARD DRAWING
MANAGED MOTORWAY
TYPICAL ENTRY FREEWAY RAMP SIGNALS FOR TWO LANES METERED

FILE NO.	CONTRACT NO.	SHEET NO.	DRAWING NO. SD6001	ISSUE A
----------	--------------	-----------	-----------------------	------------

