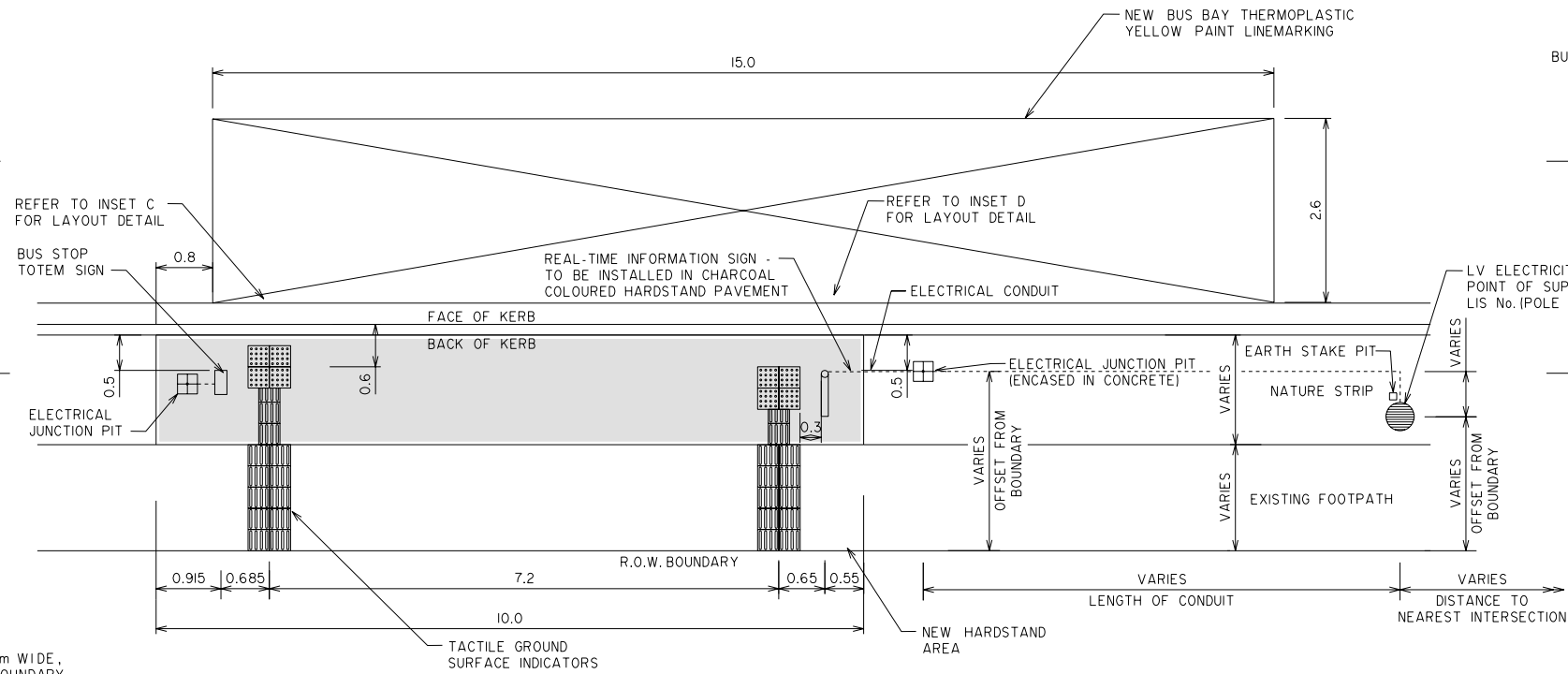
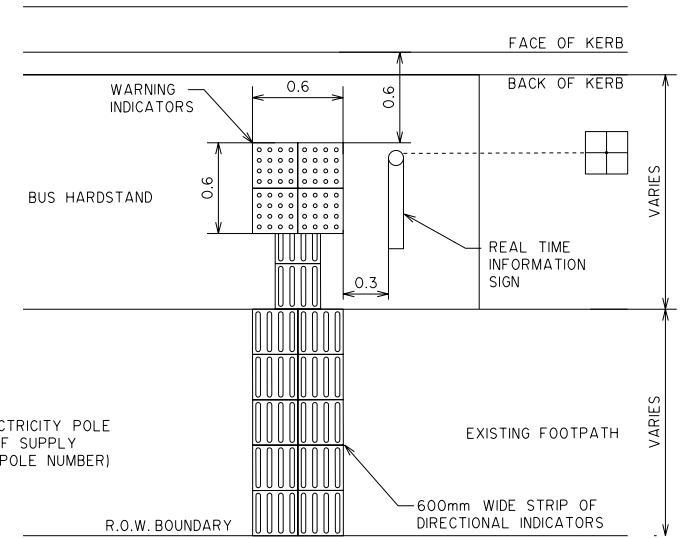


INSET C - TOTEM
NOT TO SCALE

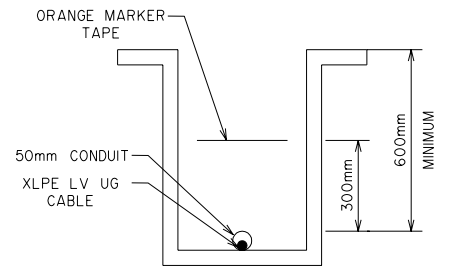
- NOTE:
1. THE REAL-TIME INFORMATION SIGN POLE IS NOT TO BE PLACED LESS THAN 0.5m FROM THE BACK OF KERB.
 2. BUS SHELTER LOCATIONS DETERMINED ON A SITE BY SITE BASIS.
 3. ELECTRICAL JUNCTION PIT TO BE A MAXIMUM OF 1.5m FROM TOTEM/RTTI SIGN AND ENCASED IN CONCRETE.
 4. CONDUIT OFFSETS FROM PROPERTY BOUNDARY/BUILDING LINE. RECORD ALL MEASUREMENTS FOR CABLE OFFSET/DIRECTION CHANGES.
 5. TOTEM FOOTING DETAILS ARE SHOWN ON DRAWING DGN00148-02.
 6. SPREAD FOOTINGS ARE ONLY TO BE USED WHERE RTI SIGNS ARE CONSTRUCTED WITHIN THE ZONE OF INFLUENCE OF EXISTING SERVICES.
 7. HARDSTAND IS TO BE A MINIMUM OF 2m FROM KERB IN DEPTH AND MAY INCORPORATE FOOTPATH AREA. WHERE NATURE STRIP IS LESS THAN 1.5m WIDE, HARDSTAND WILL EXTEND TO INCLUDE EXISTING FOOTPATH TO R.O.W. BOUNDARY.
 8. RTI DETAILS ARE SHOWN ON VICROADS DRAWING NUMBERS 573397 & 573398, SMARTBUS SIGNS, POST & FOOTING DETAILS
 9. CROSSFALL OF HARDSTAND TO BE 1:40.
 10. EARTH STAKE PIT TO BE: MANUFACTURER HR PRODUCTS TYPE 100mm x 100mm VALVE BOX COVER (PART NO HR909UB) OR SIMILAR WITH NON-CONDUCTIVE PIT LID.



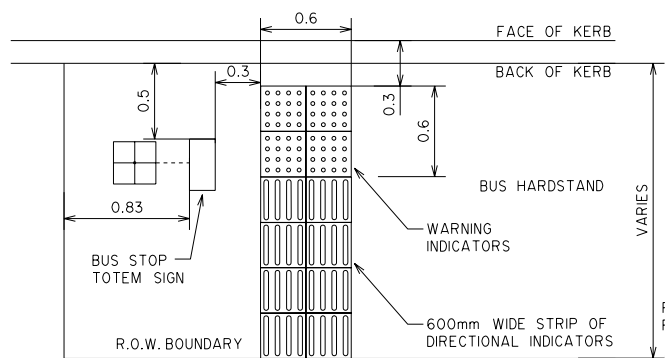
TYPICAL PREMIUM BUS STOP DETAIL
SCALE 1:100



INSET D - RTI SIGN
NOT TO SCALE

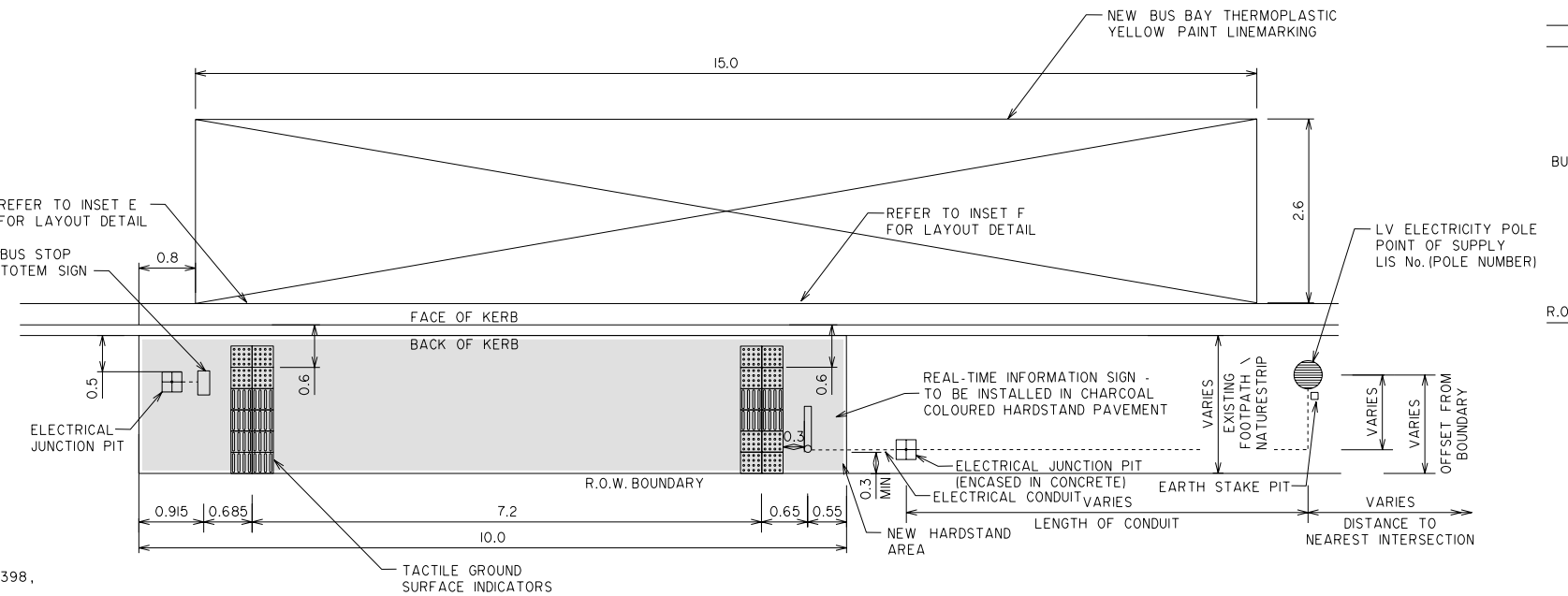


ELECTRICAL CONDUIT TYPICAL CROSS SECTION
NOT TO SCALE

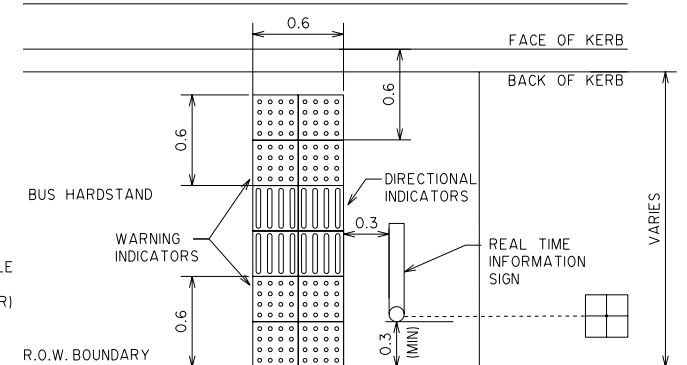


INSET E - TOTEM
NOT TO SCALE

- NOTE:
1. TO BE USED ONLY IN INSTANCES WHERE NO NATURE STRIP HAS BEEN PROVIDED OR INSUFFICIENT FOOTPATH WIDTH EXISTS.
 2. THE REAL-TIME INFORMATION SIGN POLE IS NOT TO BE PLACED LESS THAN 0.3m FROM THE ROW BOUNDARY.
 3. BUS SHELTER LOCATIONS DETERMINED ON A SITE BY SITE BASIS.
 4. ELECTRICAL JUNCTION PIT TO BE A MAXIMUM OF 1.5m FROM TOTEM/RTTI SIGN AND ENCASED IN CONCRETE.
 5. CONDUIT OFFSETS FROM PROPERTY BOUNDARY/BUILDING LINE. RECORD ALL MEASUREMENTS FOR CABLE OFFSET/DIRECTION CHANGES.
 6. TOTEM FOOTING DETAILS ARE SHOWN ON DRAWING DGN00148-02.
 7. SPREAD FOOTINGS ARE ONLY TO BE USED WHERE RTI SIGNS ARE CONSTRUCTED WITHIN THE ZONE OF INFLUENCE OF EXISTING SERVICES.
 8. RTI DETAILS ARE SHOWN ON VICROADS DRAWING NUMBERS 573397 & 573398, SMARTBUS SIGNS, POST & FOOTING DETAILS
 9. CROSSFALL OF HARDSTAND TO BE 1:40.
 10. EARTH STAKE PIT TO BE: MANUFACTURER HR PRODUCTS TYPE 100mm x 100mm VALVE BOX COVER (PART NO HR909UB) OR SIMILAR WITH NON-CONDUCTIVE PIT LID.
 11. HARDSTAND IS TO BE A MINIMUM OF 2m FROM KERB IN DEPTH AND MAY INCORPORATE FOOTPATH AREA. WHERE NATURE STRIP IS LESS THAN 1.5m WIDE, HARDSTAND WILL EXTEND TO INCLUDE EXISTING FOOTPATH TO R.O.W. BOUNDARY.



ALTERNATIVE PREMIUM BUS STOP DETAIL
SCALE 1:100



INSET F - RTI SIGN
NOT TO SCALE

WARNING
BEWARE OF UNDERGROUND SERVICES
The locations of underground services shown are approximate only and their exact position should be proven on site.

REVISION	REVISION NOTES	REVISION DATE
F	UPDATE TYPICAL SECTIONS AND STANDARD DETAILS AS PER DOT COMMENTS 11/01/11	11-01-11
B	RTTI SIGN OFFSET FROM BACK OF KERB	27-02-08
C	UPDATE TYPICAL SECTIONS AND STANDARD DETAILS AS PER DOT COMMENTS 29/08/08	01-09-08
D	UPDATE TYPICAL SECTIONS AND STANDARD DETAILS AS PER DOT COMMENTS 07/10/09	10-12-09
E	UPDATE TYPICAL SECTIONS AND STANDARD DETAILS AS PER DOT COMMENTS 07/10/10	11-10-10

GENERAL NOTES
1 ALL BUS STOPS TO COMPLY WITH DDA COMPLIANCE GUIDELINES REFER TO AS 1428 SERIES
2 BUS STOPS TO COMPLY WITH VICROADS BUS STOP GUIDELINES FEBRUARY 2006
3 REMOVE REDUNDANT TGSIS
4 REINSTATE FOOTPATH WHERE NECESSARY
5 CONSTRUCTION AND EXPANSION JOINTS TO BE INCLUDED AS REQUIRED
6 FOR ALL PREMIUM AND LOCAL BUS STOPS PROVIDE UNDERGROUND CONDUIT FROM ELECTRICAL JUNCTION PIT TO POINT OF SUPPLY

TraffixDesign
Traffic Engineering Design and Survey
Suite 8/431 Burke Road TEL: (03) 9822-2888
GLEN IRIS, VICTORIA 3146 FAX: (03) 9822-7444
www.traffixgroup.com.au

ISSUE DATE	21 09 2007
DESIGNED	G HILL
CHECKED	L LAYZELL
APPROVED	

CLIENT
Department of Transport

PROJECT
SmartBus

SMART BUS
TYPICAL SECTIONS AND STANDARD DETAILS

SCALE 0 1.0 2.0m

SHEET No. 2 of 2

DWG No. DGN00148-01