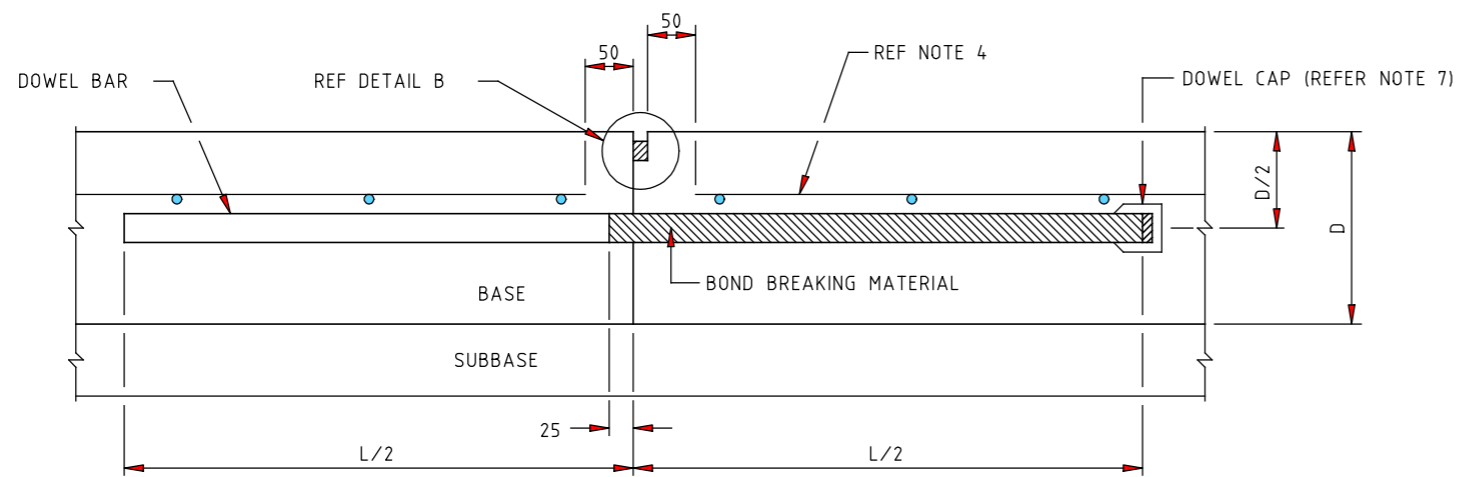
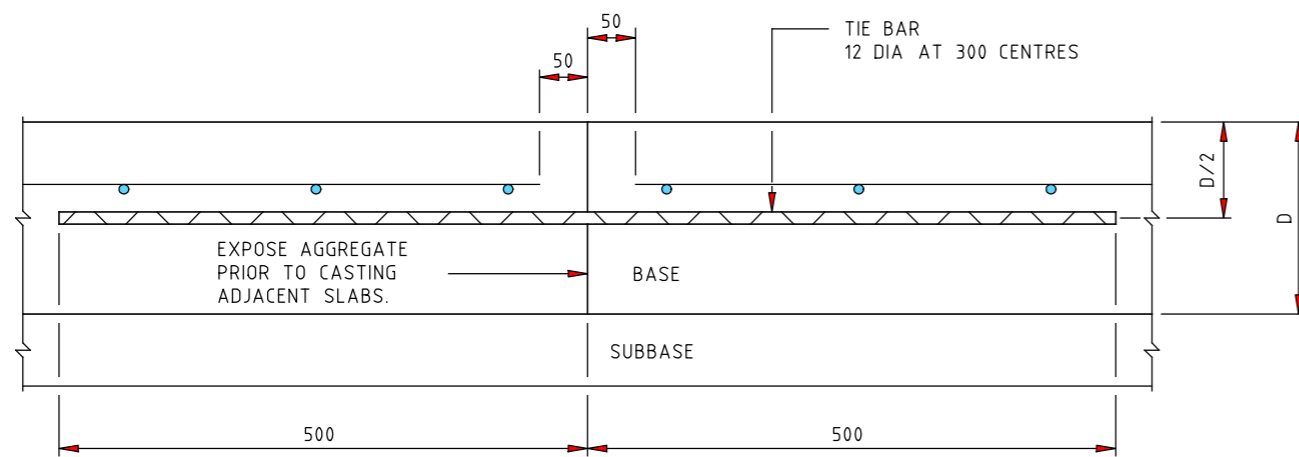


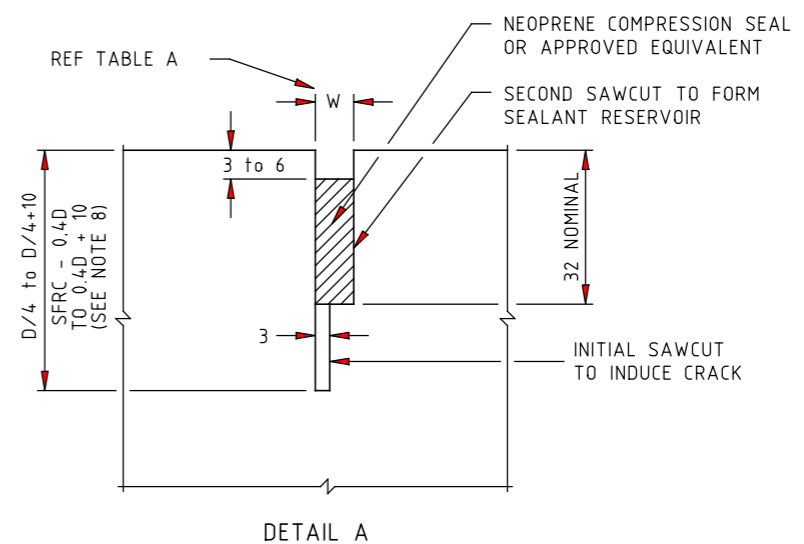
DOWELLED CONTRACTION JOINT



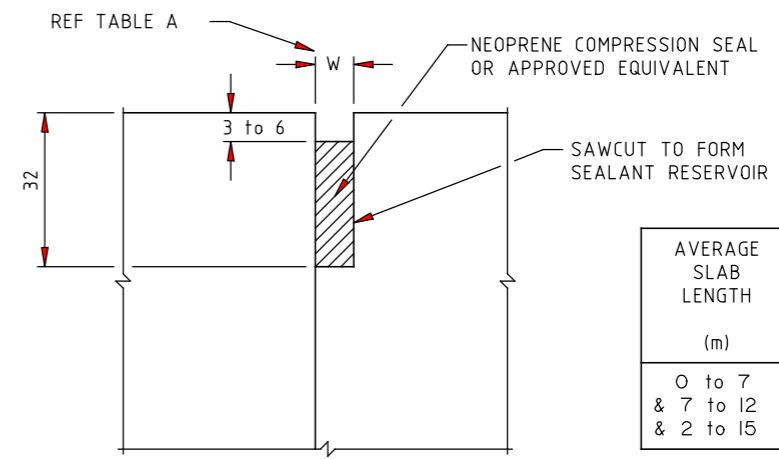
DOWELLED CONSTRUCTION JOINT - AT A CONTRACTION JOINT



TIED CONSTRUCTION JOINT - NOT AT A CONTRACTION JOINT



DETAIL A



DETAIL B

AVERAGE SLAB LENGTH (m)	NOMINAL WIDTH OF SEALANT RESERVOIR W (mm)
0 to 7	7
& 7 to 12	12
& 2 to 15	15

TABLE A

NOTES:

- DOWEL BAR DIAMETER, LENGTH AND SPACING SHALL BE AS SPECIFIED IN THE SCHEDULE OF DETAILS.
- DOWELS SHALL BE:
  - SECURELY POSITIONED PARALLEL TO PAVEMENT CENTRELINE AND FINISHED SURFACE
  - PART COATED AS SHOWN WITH APPROVED BOND BREAKING MATERIAL.
- TIE BARS SHALL BE SECURELY POSITIONED PARALLEL TO PAVEMENT CENTRELINE AND FINISHED SURFACE.
- STEEL FABRIC SHALL BE LOCATED IN THE TOP THIRD OF THE BASE AND SHALL HAVE A MINIMUM COVER OF 50mm. REFER TO SPECIFICATIONS FOR DETAILS OF STEEL FABRIC.
- SUBBASE AND BASE TRANSVERSE JOINTS SHALL BE OFFSET BY A MINIMUM OF 500mm.
- TIED CONSTRUCTION JOINTS SHALL BE LOCATED IN THE MIDDLE THIRD OF THE SLAB LENGTH AND AT LEAST 1.5m FROM TRANSVERSE CONTRACTION JOINTS.
- DOWEL CAP MAY BE OMITTED FOR SHORT SLAB (<5m) CONTRACTION JOINTS.
- SFRC IS STEEL FIBRE REINFORCED CONCRETE.

E			
D			
C			
B	J.C.	1.7.95	GENERAL NOTES 2 & 3, NOTES 7 & 8 ADDED, CONTRACTION JOINT FOR SFRC ADDED.
A	M.P.	5.2.90	NOTE: "TIED CONSTRUCTION JOINT" DETAIL
AMEND.	Appd.	Date	AMENDMENTS

GENERAL NOTES / CROSS REFERENCES	
1. EXPANSION JOINT DETAIL	SD 5401
2. SELECTION GUIDE	SD 5300
3. ALL DIMENSIONS ARE IN MILLIMETRES	

**vicroads**

PRINCIPAL ROAD DESIGN ENGINEER'S DEPARTMENT

STANDARD DRAWING  
JOINED REINFORCED CONCRETE PAVEMENT (JRCP)  
TRANSVERSE JOINT DETAIL

APPROVED <i>J. Cunningham</i> PRINCIPAL RD ENGINEER	DATE 1.7.95	SPEC. REF. No.	SHEET No.	DRAWING No.	AMENDMENT
		501-521		SD 5311	B