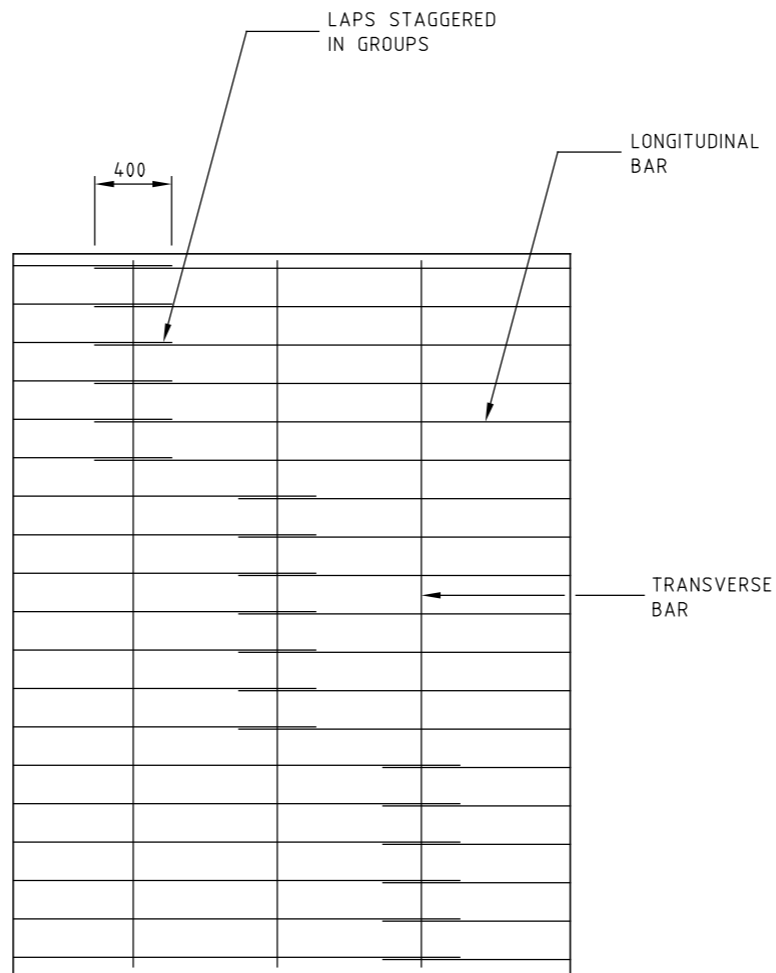
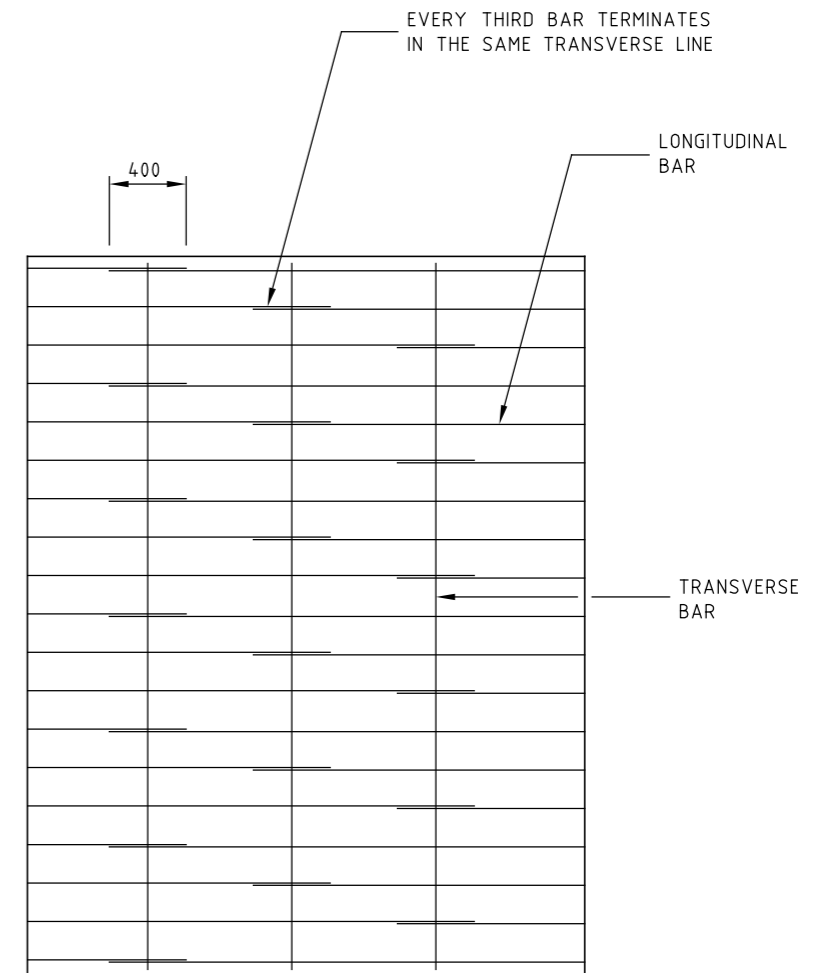


SKEWED LAPS



STAGGERED LAPS



ALTERNATING LAPS

NOTE:

LAPS SHALL BE AT LEAST 2000mm CLEAR OF LONGITUDINAL TIE BARS AT TRANSVERSE CONSTRUCTION JOINTS AND SHALL BE RIGIDLY TIED.

E			
D			
C			
B			
A	J.C.	1.7.95	GENERAL NOTES 2 & 3
AMEND.	Appd.	Date	AMENDMENTS

GENERAL NOTES / CROSS REFERENCES

1. REINFORCEMENT - TIE BAR ARRANGEMENT AND TRANSVERSE CONSTRUCTION JOINT DETAIL SD 5361
2. SELECTION GUIDE SD 5300
3. ALL DIMENSIONS ARE IN MILLIMETRES

vicroads

PRINCIPAL ROAD DESIGN ENGINEER'S DEPARTMENT

STANDARD DRAWING CONTINUOUSLY REINFORCED CONC. PAVEMENT (CRCP) ALTERNATIVE LAP PATTERNS FOR LONGITUDINAL BARS			
APPROVED <i>J. Cunningham</i> PRINCIPAL RD ENGINEER	DATE 1.7.95	SPEC. REF. No. 501-521	SHEET No. DRAWING No. SD 5371
		AMENDMENT A	