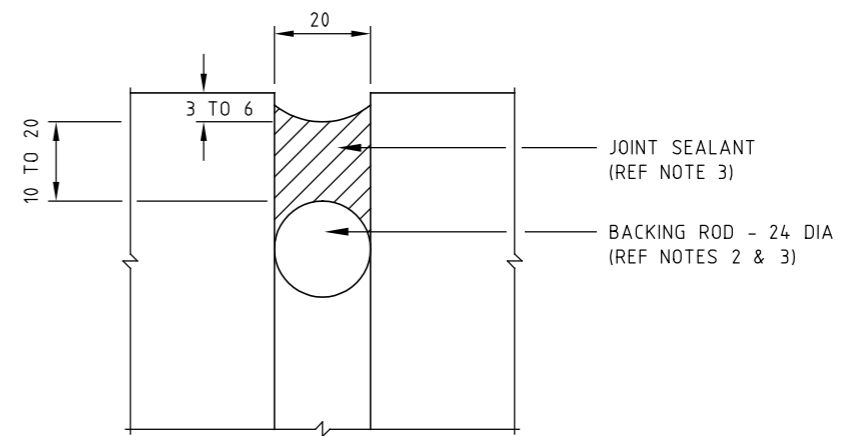
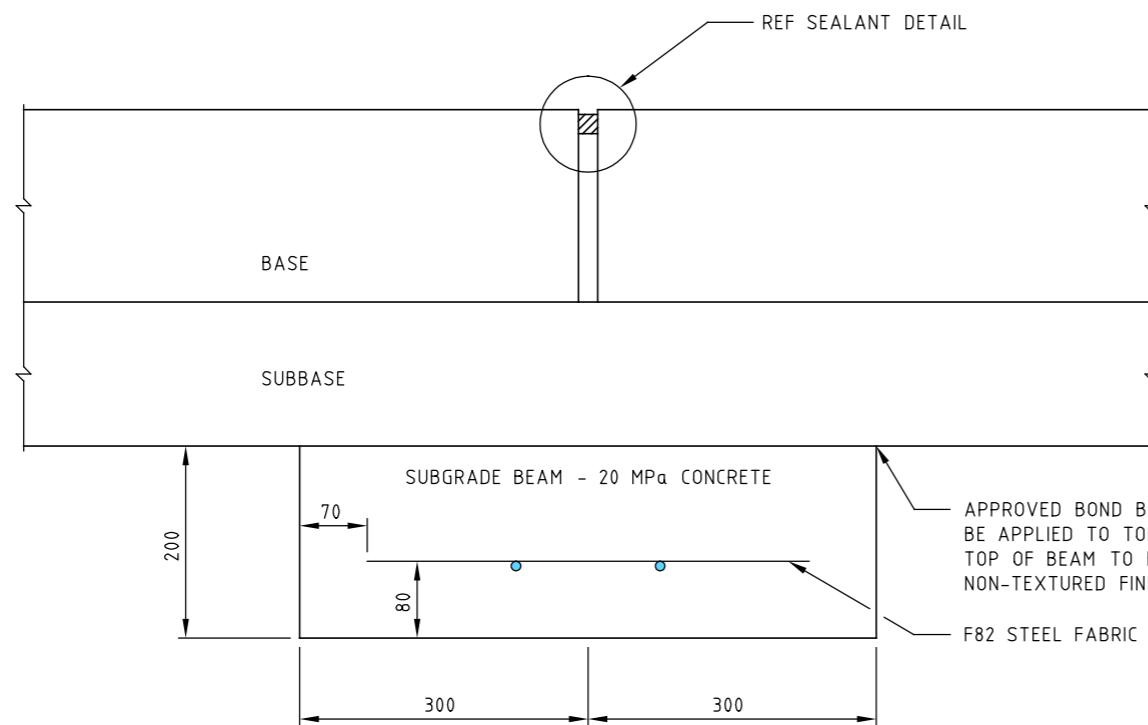


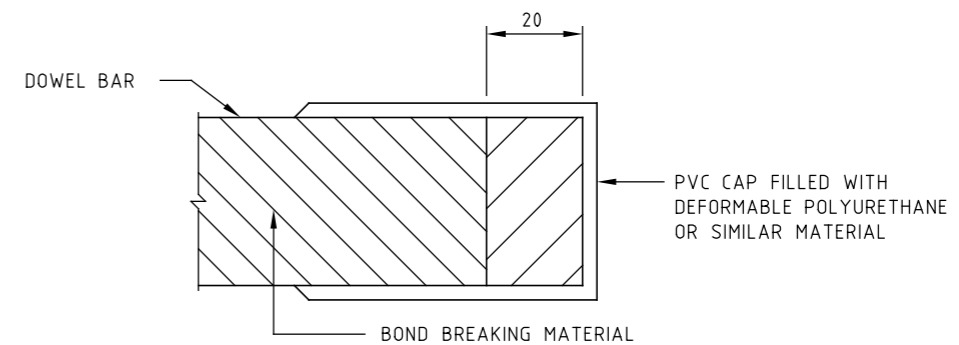
DOWELLED EXPANSION JOINT



SEALANT DETAIL - EXPANSION JOINT



EXPANSION JOINT WITH SUBGRADE BEAM



DOWEL CAP DETAIL

NOTES:

1. DOWEL BARS SHALL BE:
-SECURELY POSITIONED PARALLEL TO PAVEMENT CENTRELINE AND FINISHED SURFACE.
-PART COATED AS SHOWN WITH APPROVED BOND BREAKING MATERIAL.
2. BACKING ROD SHALL BE MADE OF POLYETHYLENE FOAM OR APPROVED EQUIVALENT. ALTERNATIVE MATERIAL AND SHAPE MAY BE APPROVED.
3. AN APPROVED NEOPRENE COMPRESSION SEAL CONFORMING TO ASTM D2628 MAY BE USED INSTEAD OF A FIELD MOULDED SEALANT AND BACKING ROD.
4. AN APPROVED SEALANT SHALL BE INSTALLED ALONG THE TOP AND DOWN THE VERTICAL EDGES OF THE EXPANSION JOINT.
5. REINFORCEMENT SHALL BE LOCATED IN THE TOP THIRD OF THE BASE AND SHALL HAVE A MINIMUM COVER OF 50mm.

E			
D			
C			
B	J.C.	1.7.95	NOTE 3 AND GENERAL NOTES 1 & 2
A	M.P.	5.2.90	STEEL FABRIC SPECIFICATION
AMEND.	Appd.	Date	AMENDMENTS

GENERAL NOTES / CROSS REFERENCES	
1. SELECTION GUIDE	SD 5300
2. ALL DIMENSIONS ARE IN MILLIMETRES	

vicroads
PRINCIPAL
ROAD DESIGN ENGINEER'S
DEPARTMENT

STANDARD DRAWING CONCRETE PAVEMENT - ALL TYPES EXPANSION JOINT DETAIL					
APPROVED <i>J. Cunningham</i> PRINCIPAL RD ENGINEER	DATE 1.7.95	SPEC. REF. No. 501-521	SHEET No.	DRAWING No. SD 5401	AMENDMENT B