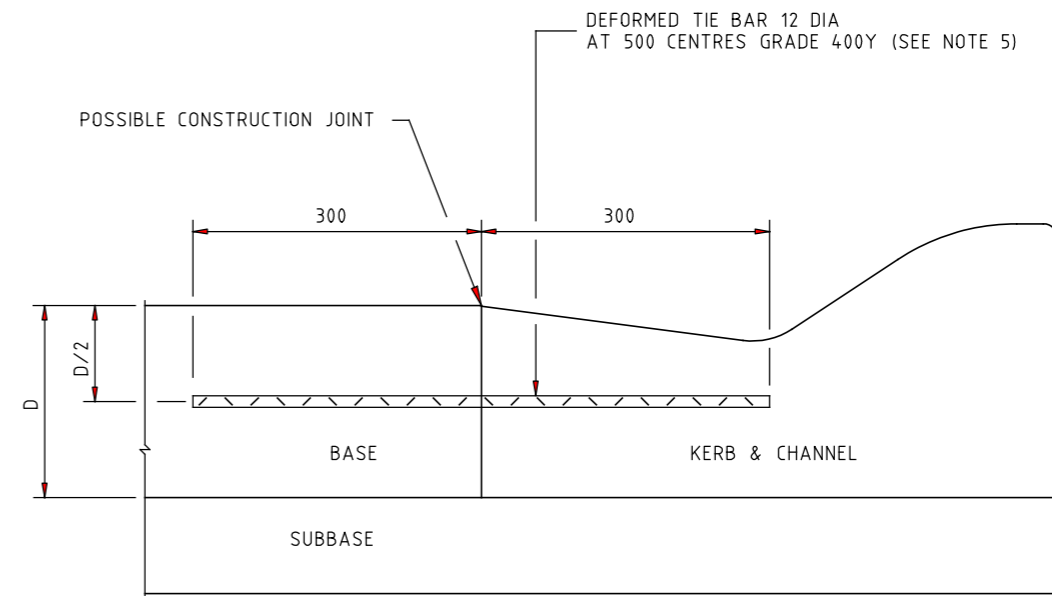
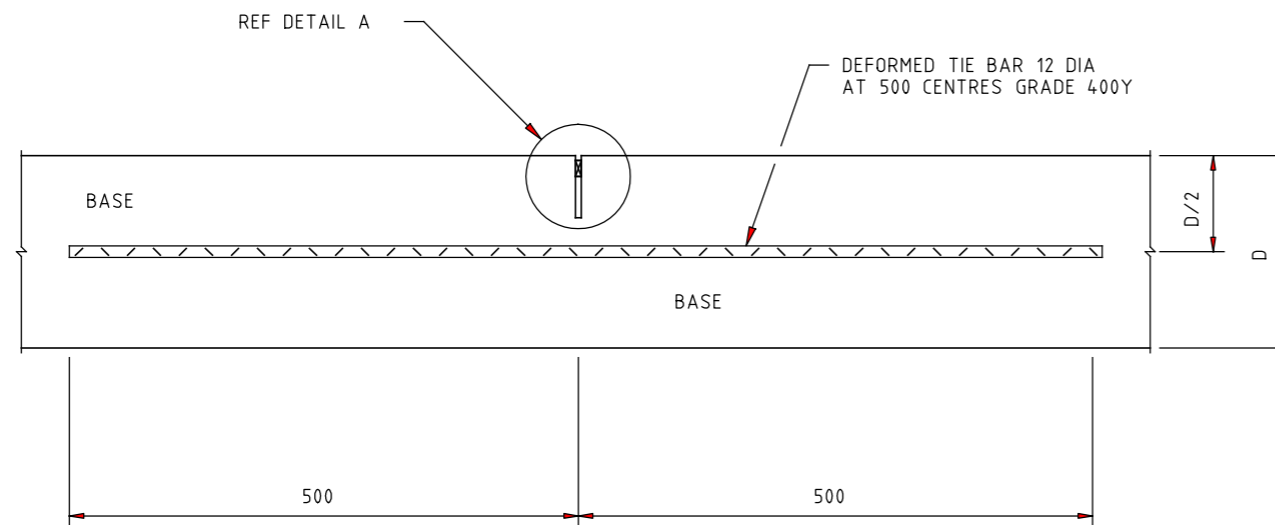


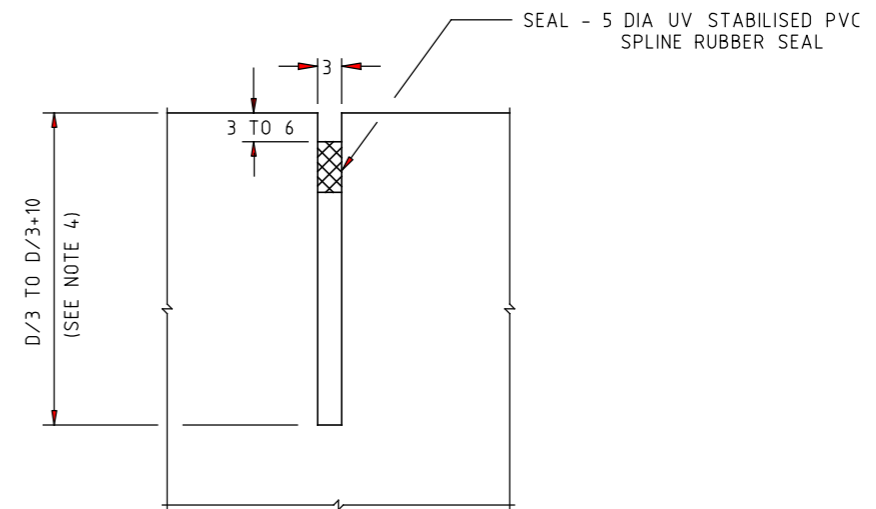
CONSTRUCTION JOINT



KERB AND CHANNEL TIED JOINT



SAWN LONGITUDINAL JOINT



DETAIL A

NOTES:

1. TIE BAR SHALL NOT BE PLACED WITHIN 500mm OF A TRANSVERSE CONTRACTION JOINT.
2. REINFORCEMENT FOR JOINTED AND CONTINUOUSLY REINFORCED PAVEMENTS IS NOT SHOWN REFER TO SCHEDULE OF DETAILS.
3. SUBBASE AND BASE LONGITUDINAL JOINTS SHALL BE OFFSET BY NOT LESS THAN 250mm BUT NOT MORE THAN 300mm.
4. SAME DIMENSIONS FOR STEEL FIBRE REINFORCED CONCRETE.
5. KERB AND CHANNEL TIED JOINT: IF KERB AND CHANNEL AND BASE ARE CAST SIMULTANEOUSLY, TIE BARS ARE NOT REQUIRED BETWEEN THEM. THE PAVEMENT REINFORCEMENT SHALL BE EXTENDED INTO THE KERB AND CHANNEL AND THE BACK OF KERB IS THE EDGE OF PAVEMENT.

E				GENERAL NOTES / CROSS REFERENCES		STANDARD DRAWING					
D				1. SELECTION GUIDE	SD 5300	CONCRETE PAVEMENT-ALL TYPES					
C	J.C.	1.7.95	GRADE OF TIE BARS, NOTES 4 & 5, GENERAL NOTES 1 & 2, CONSTRUCTION JOINT THICKNESS	2. ALL DIMENSIONS ARE IN MILLIMETRES		LONGITUDINAL TIED JOINTS					
B	M.P.	5.2.90	RUBBER SEAL, DEFORMED BAR SPEC REMOVED			APPROVED	DATE	SPEC. REF. No.	SHEET No.	DRAWING No.	AMENDMENT
A	M.P.	19.9.89	CORRUGATED JOINT, STEEL GRADE			<i>J. Cunningham</i>	1.7.95	501-521		SD 5411	C
AMEND.	Appd.	Date	AMENDMENTS			PRINCIPAL RD ENGINEER					