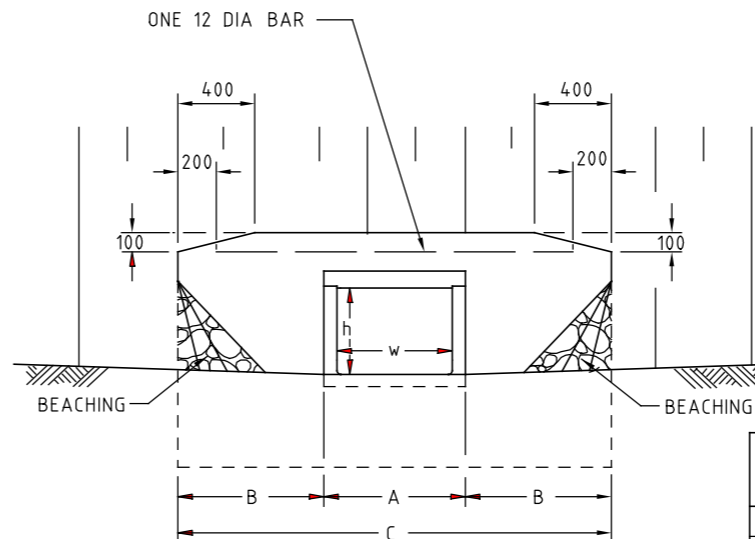


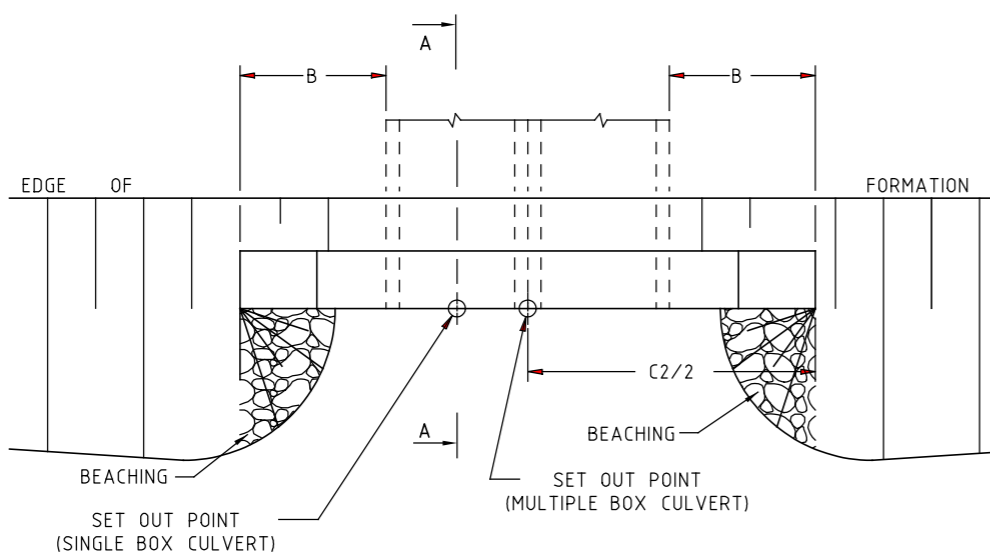
END ELEVATION



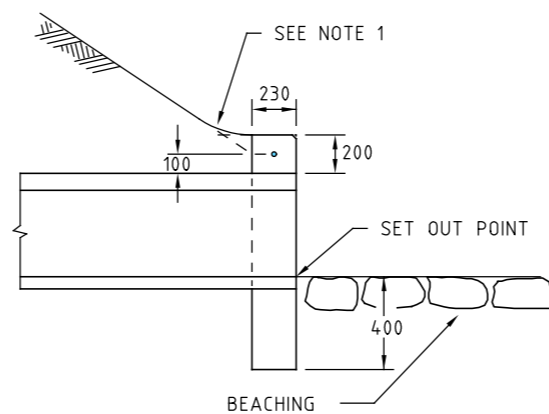
END ELEVATION

DIMENSIONS

NOM WIDTH (w)	NOM HEIGHT (h)	A	B	C	C2	H
375	225	483	450	1383	1866	919
450	225	559	450	1459	2018	919
450	300	559	540	1639	2198	995
600	225	737	450	1637	2374	929
600	300	737	540	1817	2554	1005
600	450	737	760	2257	2994	1157
750	300	889	540	1969	2858	1010
750	450	889	760	2409	3298	1162
900	300	1067	540	2147	3214	1015
900	450	1067	760	2587	3654	1167
1200	300	1372	540	2452	3824	1026
1200	450	1372	760	2892	4264	1178



PLAN



SECTION A-A

NOTES:

1. BECAUSE THE RELATION OF THE BATTER TO THE TOP OF THE ENDWALL IS ESSENTIAL FOR THE SAFETY OF THE MOTORIST, THE DETAILS AS SHOWN IN SECTION A-A MUST BE ADHERED TO DURING CONSTRUCTION.
2. LAPS IN REINFORCEMENT BARS SHALL BE 300 MIN, AND CLEAR COVER 50 MIN. BARS SHALL TERMINATE 50 FROM THE CONCRETE SURFACE.
3. EXPOSED CONCRETE EDGES SHALL HAVE 20 x 20 CHAMFER.
4. COMPACTION PRESSURE BEHIND WALLS NOT TO EXCEED 15 kPa. (1.5 TONNE VIBRATORY ROLLER).
5. REFER TO SD 1832 FOR QUANTITIES
6. CONCRETE SHALL BE NORMAL-CLASS N32 STANDARD STRENGTH GRADE OR HIGHER COMPLYING WITH THE REQUIREMENTS OF AS 1379. EXPOSURE CLASSIFICATIONS UP TO AND INCLUDING B1.
7. REINFORCEMENT SHALL BE GRADE 400 Y COMPLYING WITH SECTION 611 OF VICROADS SPECIFICATION
8. CONCRETE AGGREGATES SHALL COMPLY WITH TABLE 701.021 OF VICROADS STANDARD SPECIFICATION SECTION 701.
9. ENDWALLS SHALL BE CONSTRUCTED IN ACCORDANCE WITH THE RELEVANT PROVISIONS OF AS 3600.

AMEND.	Appd.	Date	AMENDMENTS
E			
D			
C			
B	J.C.	1.2.98	AMENDED NOTE 6, NOTES 8 & 9 ADDED, CONCRETE STRENGTH GRADES
A	J.C.	1.7.95	BEACHING ADDED, NOTES 2,3,4,5,6 & 7, GENERAL NOTES 1 & 2, DIMENSION C2 ADDED

GENERAL NOTES / CROSS REFERENCES

1. ALL DIMENSIONS ARE IN MILLIMETRES.
2. CULVERT INLET AND OUTLET STRUCTURES - SELECTION GUIDE

SD 1700

vicroads

PRINCIPAL ROAD DESIGN ENGINEER'S DEPARTMENT

STANDARD DRAWING					
MASS CONCRETE ENDWALL					
BOX CULVERTS 225 TO 450 HIGH					
APPROVED	DATE	SPEC. REF. No.	SHEET No.	DRAWING No.	AMENDMENT
<i>J. Cunningham</i>	12.95			SD 1831	B
PRINCIPAL RD ENGINEER					