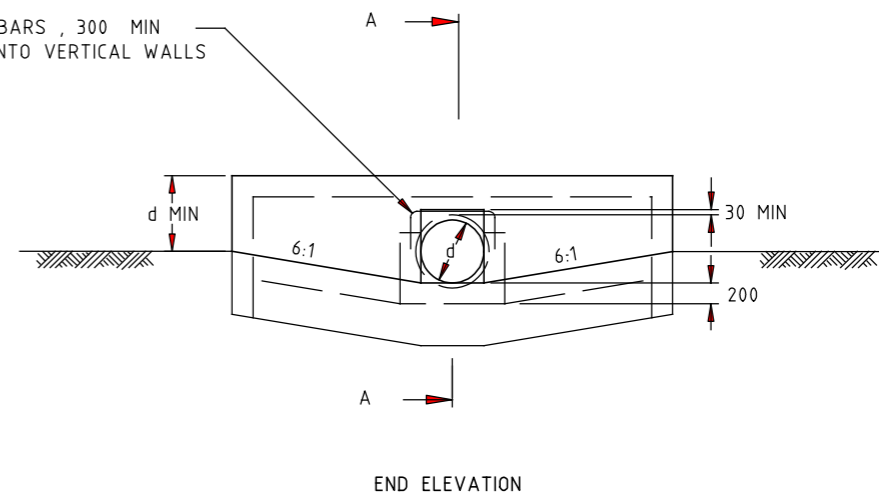
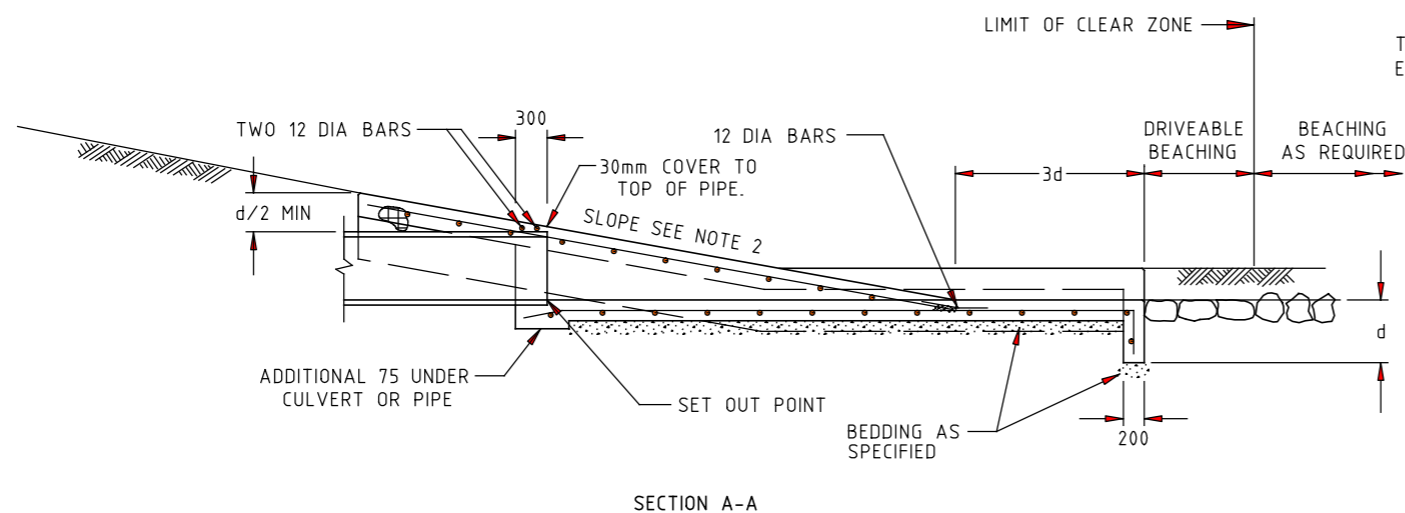
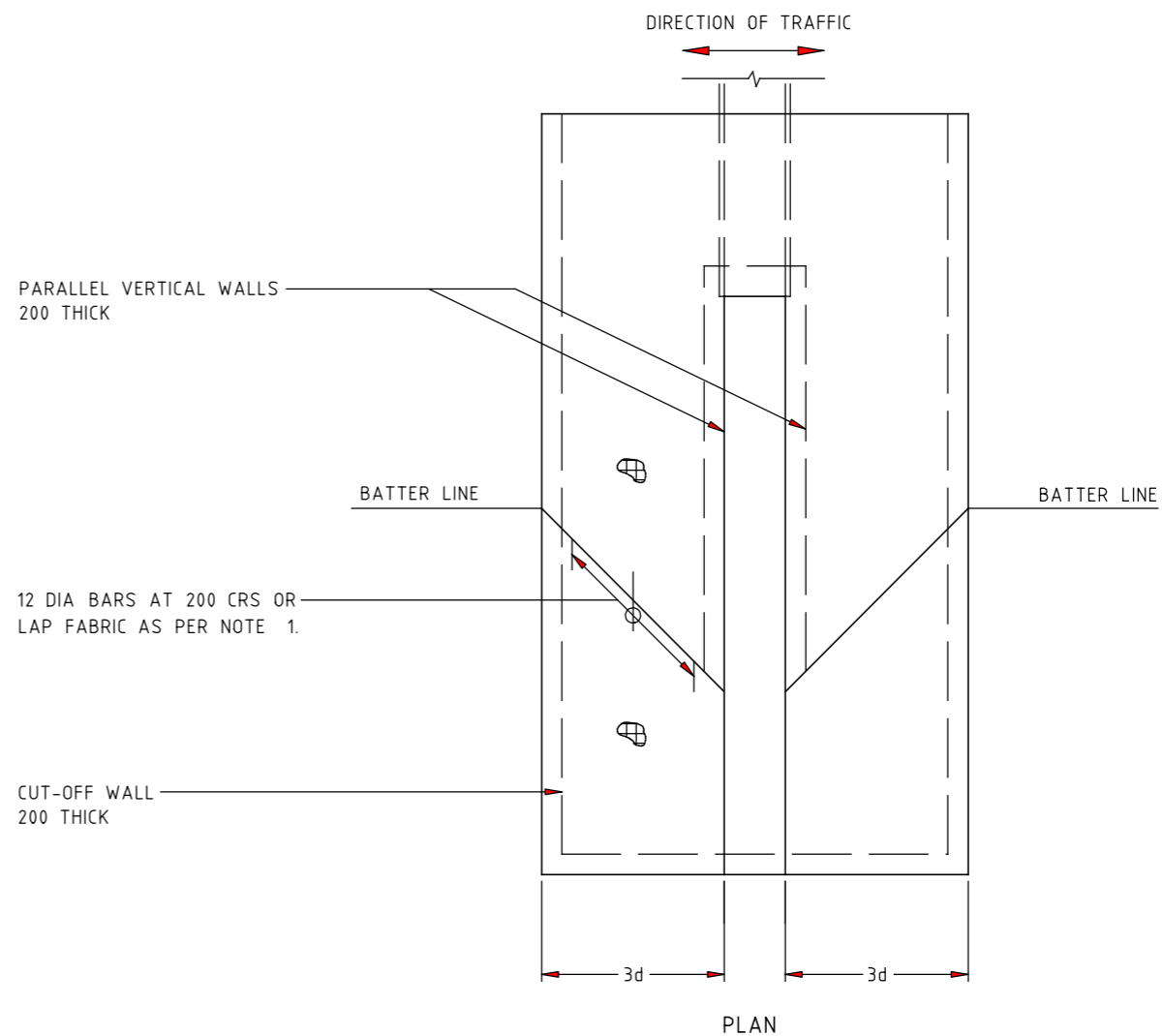


NOTES:

1. REINFORCEMENT, F81 UNLESS OTHERWISE SPECIFIED, SHALL BE CONTINUOUS, AROUND CORNERS AND LOCATED AS SHOWN. CLEAR COVER 50 MIN. LAPS: FABRICS 300 MIN, BARS 25 X BAR DIAMETER MIN.
2. SLOPE OF ENDWALL TO MATCH BATTER SLOPE. MAXIMUM SLOPE 4 TO 1. MINIMUM SLOPE 6 TO 1.
3. CONCRETE SHALL BE NORMAL-CLASS N32 STANDARD STRENGTH GRADE OR HIGHER COMPLYING WITH THE REQUIREMENTS OF AS 1329. EXPOSURE CLASSIFICATIONS UP TO INCLUDING B1.
4. EXPOSED EDGES SHALL HAVE 20 x 20 CHAMFERS.
5.  $d$  = INTERNAL DIAMETER OF PIPE (OR HEIGHT OF BOX).
6. CONCRETE AGGREGATES SHALL COMPLY WITH TABLE 701.021 OF VICROADS STANDARD SPECIFICATION SECTION 701.
7. ENDWALLS SHALL BE CONSTRUCTED IN ACCORDANCE WITH THE RELEVANT PROVISIONS OF AS 3600



E			
D			
C			
B			
A	J.C.	1.2.98	AMENDMENT TO NOTE 3. NOTES 6 & 7 ADDED. CONCRETE STRENGTH GRADES
AMEND.	Appd.	Date	AMENDMENTS

GENERAL NOTES / CROSS REFERENCES  
 1. ALL DIMENSIONS ARE IN MILLIMETRES UNLESS SHOWN OTHERWISE

**vicroads**  
 PRINCIPAL ROAD DESIGN ENGINEER'S DEPARTMENT

STANDARD DRAWING DRIVEABLE CULVERT ENDWALLS (Type 2) PIPE CULVERTS UP TO 600mm DIA. AND BOX CULVERTS UP TO 600mm WIDE					
APPROVED	DATE	SPEC. REF. No.	SHEET No.	DRAWING No.	AMENDMENT
<i>Prin Eng</i>	24.2.94			SD 1992	A
PRINCIPAL RD ENGINEER					