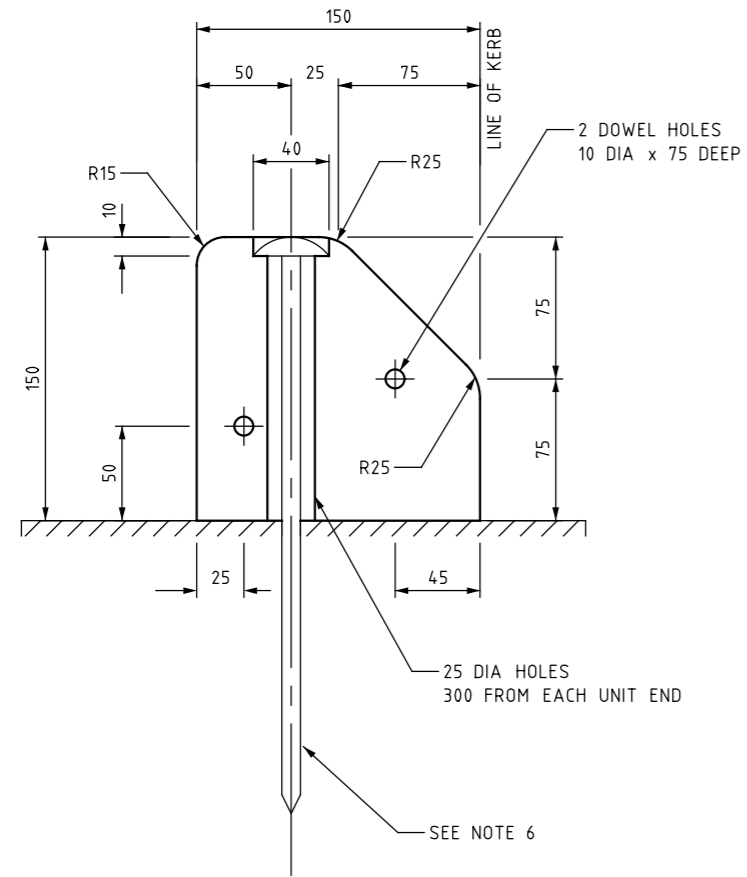
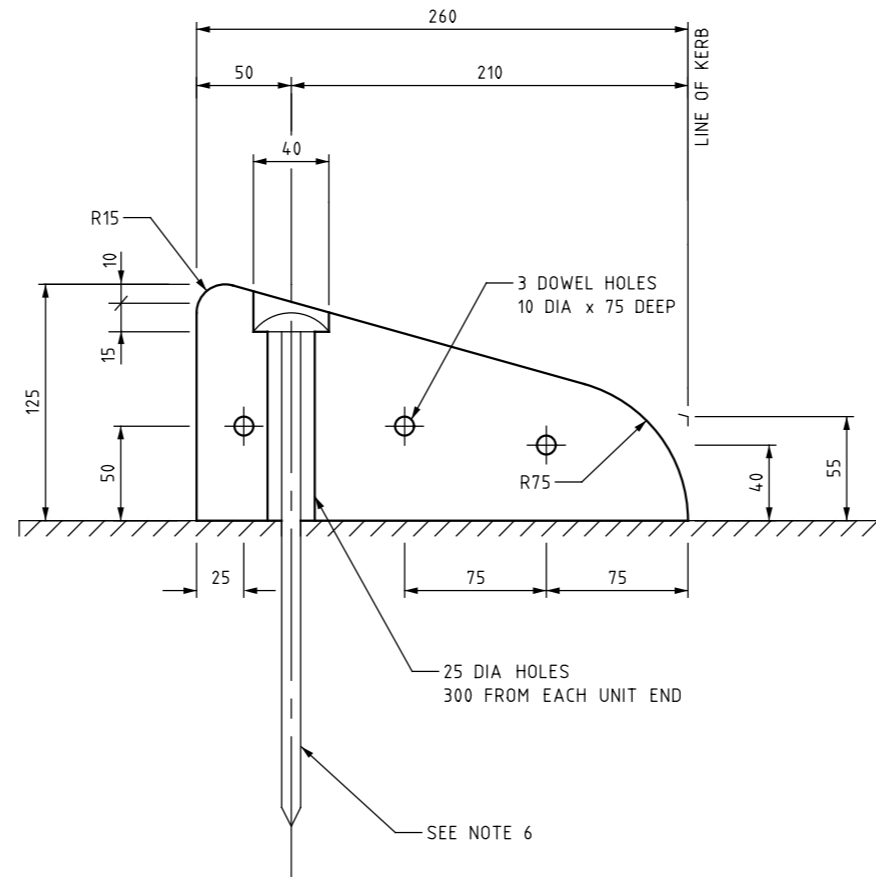


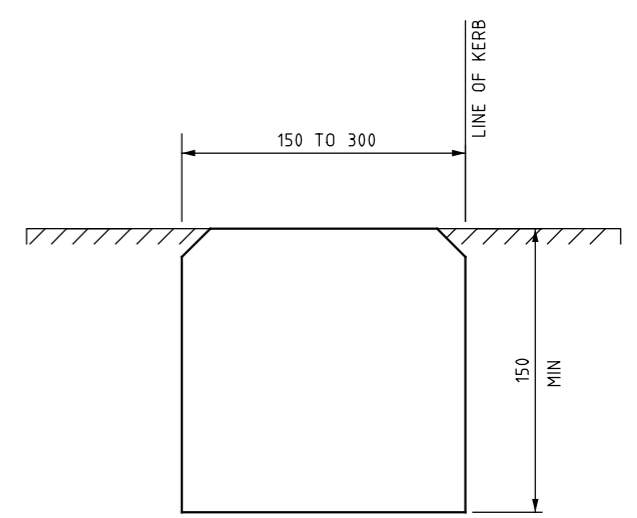
ISSUE	APP'D	DATE	AMENDMENT



**B TYPE
SPIKED BARRIER KERB
FOR TEMPORARY WORKS**



**SM TYPE
SPIKED SEMI-MOUNTABLE KERB
FOR TEMPORARY WORKS**



EDGE STRIP

1. DIMENSIONS ARE IN MILLIMETRES
2. CHAMFERS ARE 15x15 UNLESS SHOWN OTHERWISE
3. CONCRETE SHALL BE NORMAL-CLASS N25 STANDARD STRENGTH GRADE COMPLYING WITH THE REQUIREMENTS OF AS 1379
4. PRE-CAST UNITS SHALL HAVE WEIGHT IMPRINTS FOR OH&S MANUAL HANDLING PURPOSES. THE LETTERING SHALL BE 25mm MIN
5. PRE-CAST UNITS ARE TO HAVE LIFTING HOLES AS PER THE REQUIREMENTS OF AS 3996
6. POINTED STEEL SPIKE 15 DIA x 300 LONG (DRILL PAVEMENT BEFORE DRIVING SPIKE)
7. PRE-CAST UNITS SHALL BE CAST IN 1000 OR 1800 LENGTHS

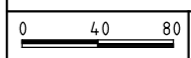
REFERENCES AND NOTES:
AS 1379 SPECIFICATION AND SUPPLY OF CONCRETE
AS 2876 CONCRETE KERBS AND CHANNELS (GUTTERS) MANUALLY OR MACHINE PLACED
AS 3600 CONCRETE STRUCTURES
AS 3996 ACCESS COVERS AND GRATES
VR SPECIFICATIONS 703 GENERAL CONCRETE PAVING

TECHNICAL
CONSULTING

3 PROSPECT HILL ROAD
CAMBERWELL
VICTORIA 3124
PHONE (03) 9811 8355
FAX (03) 9811 8329



KERBS SD2100
CONCRETE SPIKED KERB AND EDGE STRIP



APPROVED
DANIEL CASSAR (PRDE) 13-8-12

SD NO.
SD2100

VICROADS DRAWING NO 720254