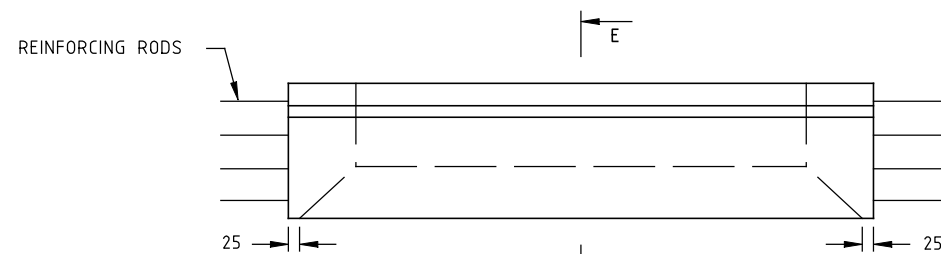
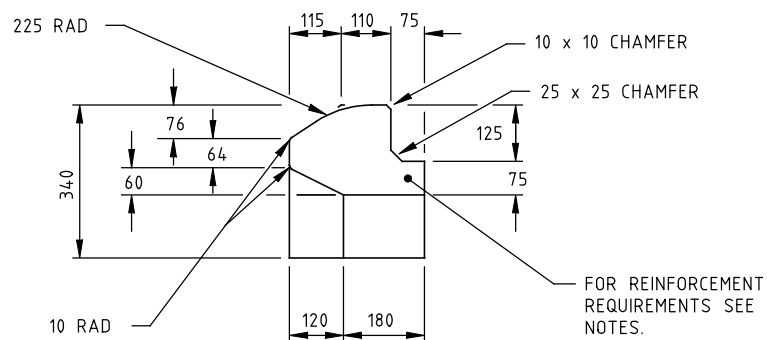


ELEVATION

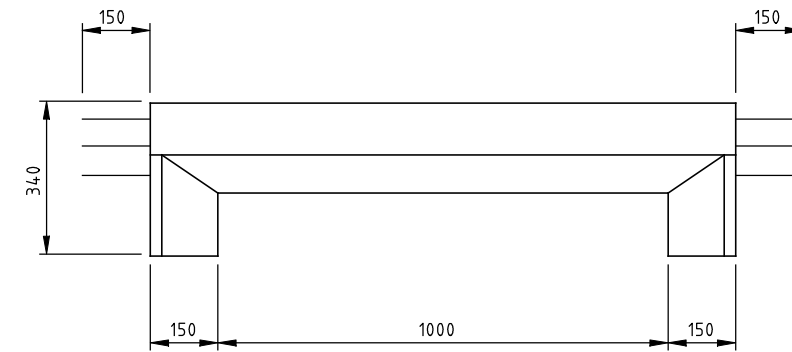


PLAN

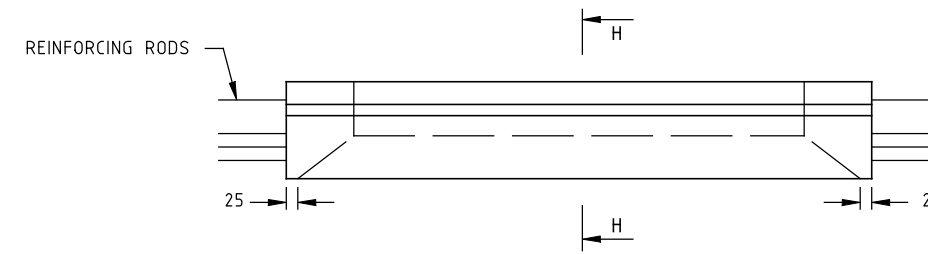


SECTION E-E
SM TYPE LINTELS

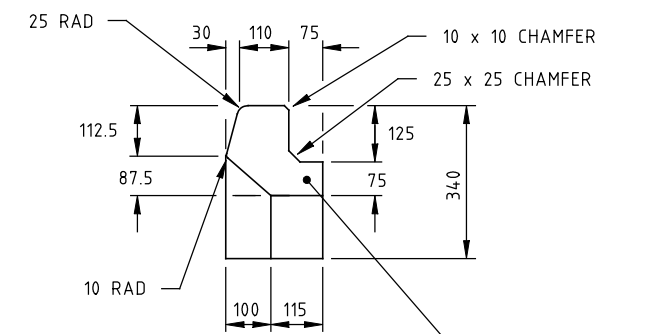
FOR REINFORCEMENT REQUIREMENTS SEE NOTES.



ELEVATION



PLAN



SECTION H-H
B TYPE LINTELS

FOR REINFORCEMENT REQUIREMENTS SEE NOTES.

NOTES

1. STANDARD LINTELS ARE REQUIRED TO SUPPORT A TEST LOAD OF 100 kN
2. STEEL REINFORCEMENT SHALL COMPLY WITH SECTION 611 OF VICROADS SPECIFICATION.
3. CONCRETE SHALL BE CONCRETE GRADE N40 OR HIGHER COMPLYING WITH AS 1379. EXPOSURE CLASSIFICATIONS UP TO AND INCLUDING B1.
4. MINIMUM CLEAR COVER TO REINFORCEMENT 25 mm FOR PRECAST CONCRETE UNITS.

sd-1061.dgn
30/03/2006 12:08:13 PM

ISSUE	APP'D	DATE	AMENDMENT
E			
D			
C	J.K.	1/7/05	AMMENDMENT TO NOTE 1, NOTE 3 AND NOTE 5
B	J.C.	1/2/98	AMMENDMENT TO NOTE 3, CONCRETE STRENGTH GRADES.
A	J.C.	1/9/94	NOTES, GEN NOTES 1 & 2 LENGTH OF REINFORCEMENT ROD EXTENSIONS DOTTED LINES ON PLAN AND ELEVATION.

GENERAL NOTES	
1.	KERBS - SD 2001
2.	ALL DIMENSIONS ARE IN MILLIMETRES

DESIGNED	PRINCIPAL ROAD DESIGN ENGINEER	 ENGINEERING & TECHNOLOGY CONSULTANTS	3 PROSPECT HILL ROAD, CAMBERWELL, VICTORIA, 3124 PHONE NO. (03) 9411 8355 FAX NO. (03) 9411 8327
APPROVED	22.9.94 <i>J. Cunningham</i>		
CATALOG PROJECT FILENAME	PRED sddgnnew sd-1011d.dgn	SCALE OF METRES	HOR VER NOT TO SCALE

STANDARD DRAWING				
LINTELS				
FILE NO.	CONTRACT NO.	SHEET NO.	DRAWING NO.	ISSUE
			SD 1061	C