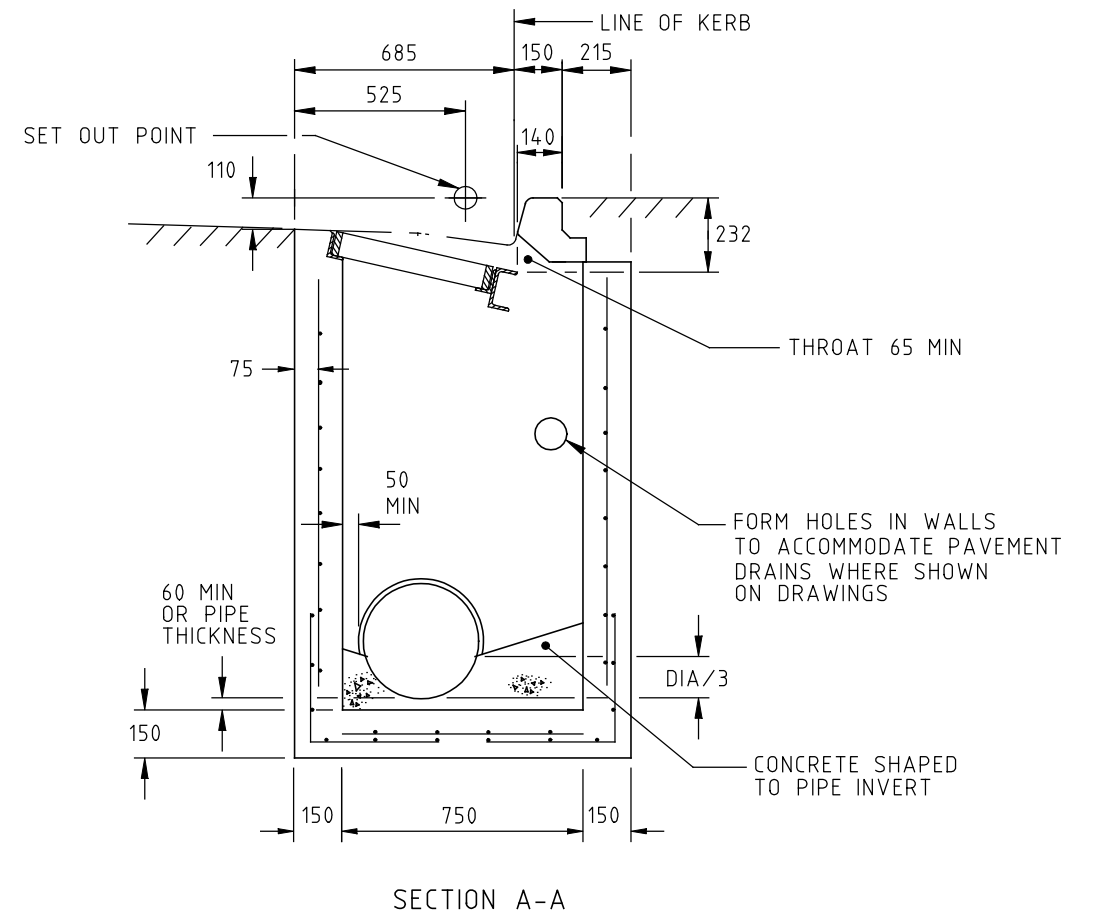


NOTES:

1. HAUNCHING MAY BE REQUIRED FOR PIPES OVER 450 DIA, REFER TO PIT SCHEDULE FOR SIZES OF SPECIFIC PITS. PITS WITH HAUNCHING IN TWO DIRECTIONS REQUIRE SPECIAL STRUCTURAL DESIGN.
2. PIT REINFORCEMENT - F92. LAPS TO BE 300 MINIMUM. CLEAR COVER TO BE 50 MINIMUM. CORNER RETURN REINFORCEMENT MAY BE FABRIC OR EQUIVALENT BARS. BARS GRADE 400Y & FABRICS TO COMPLY WITH AS/NZS 4671. CONCRETE SHALL BE NORMAL-CLASS N32 STANDARD STRENGTH GRADE OR HIGHER COMPLYING WITH THE REQUIREMENTS OF AS 1379. EXPOSURE CLASSIFICATIONS UP TO AND INCLUDING B1.
3. PITS DEEPER THAN 1000 SHALL BE FITTED WITH STEP IRONS. REF. SD 1041.
4. CONCRETE LINTEL IS REQUIRED TO SUPPORT A TEST LOAD OF 100 kN IN ACCORDANCE WITH VICROADS' "INTERIM TEST METHOD FOR TEST LOADING PIT COVERS, LINTELS AND LIDS."
5. PRECAST UNITS MAY BE CONSTRUCTED TO THE MANUFACTURER'S DETAILS. THE DESIGN SHALL COMPLY WITH THE AS 5100 BRIDGE DESIGN AND THE FOLLOWING ADDITIONAL REQUIREMENTS:
 - COMBINED FACTORED LATERAL PRESSURE AT ANY POINT AT THE ULTIMATE LIMIT STATE SHALL BE NOT LESS THAN 25 kPa.
 - ADEQUATE DRAINAGE SHALL BE PROVIDED TO PIT WALLS TO AVOID HYDROSTATIC PRESSURE.
 - VERTICAL LOAD 210 kN APPLIED ANYWHERE ON PIT.
 - MINIMUM REINFORCEMENT AREA SHALL BE 150 mm²/m.
 - CONCRETE SHALL BE NORMAL-CLASS N32 STANDARD STRENGTH GRADE OR HIGHER COMPLYING WITH THE REQUIREMENTS OF AS 1379. EXPOSURE CLASSIFICATIONS UP TO AND INCLUDING B1.
6. GRATE FRAME SHALL BE CONSTRUCTED FROM 75x50x8 MS ANGLE. EACH CORNER SHALL BE CHAMFERED ON UNDERSIDE OF HORIZONTAL LEG AND ON INSIDE OF VERTICAL LEG BEFORE WELDING WITH SINGLE V BUTT WELD. FRAME TO BE WELDED TO 125x65 13.4kg/m TF CHANNEL.
7. GRATE UNITS SHALL BE MADE FROM 75x20x460 MS BARS. THE TOP AND BOTTOM EDGES OF THE BAR ENDS SHALL BE CHAMFERED 5mmx5mm BEFORE CONTINUOUSLY WELDING ALL AROUND AND GROUND FLUSH BEFORE GALVANIZING.
8. BOTH GRATE AND GRATE FRAME SHALL BE HOT DIP GALVANIZED TO AS 1650 UNLESS SPECIFIED OTHERWISE.



GENERAL NOTES

1. STANDARD PITS DIMENSIONING & SETTING OUT DETAILS
2. UNHAUNCHED PITS
3. HAUNCHED PITS
4. STEP IRONS
5. LINTELS
6. ALL DIMENSIONS ARE IN MILLIMETRES

SD 1001
SD 1011
SD 1021
SD 1041
SD 1061

DESIGNED PRINCIPAL ROAD DESIGN ENGINEER
APPROVED 23.9.94
CATALOG PRED
PROJECT sddgnnew
FILENAME sd-1322e.dgn



3 PROSPECT HILL ROAD,
CAMBERWELL,
VICTORIA, 3124
PHONE NO. (03) 9811 8355
FAX NO. (03) 9811 8329

STANDARD DRAWING
GRATED SIDE ENTRY PIT
(B TYPE KERB)
ONE METRE INLET

FILE NO.	CONTRACT NO.	SHEET NO.	DRAWING NO.	ISSUE
			SD 1322	E