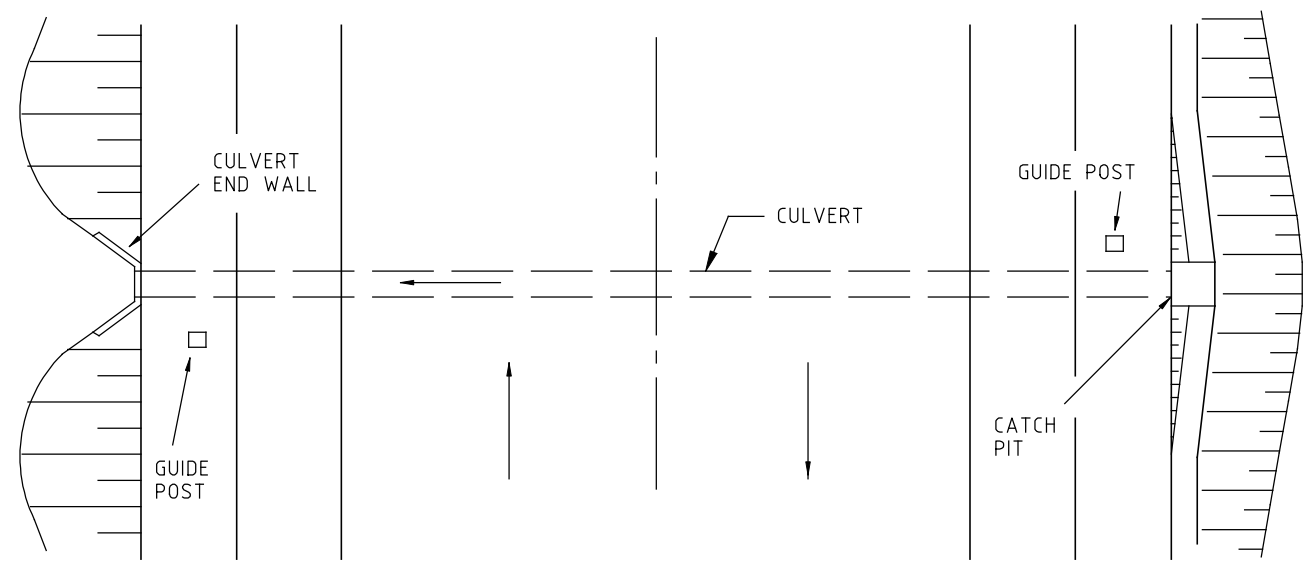


LATERAL LOCATION OF GUIDE POSTS



LOCATION OF CULVERT GUIDE POSTS

NOTES:

- THE FOLLOWING TYPES OF GUIDE POST ARE AVAILABLE
 - (I) TIMBER POSTS: 100x50mm (nominal) CROSS-SECTION, PAINTED WHITE. SEE DIAGRAM (I).
 - (II) GALVANIZED STEEL POSTS: OF APPROVED CROSS-SECTION WITH 100x500mm WHITE DELINEATOR PLATE ATTACHED. SEE DIAGRAM (II).
 - (III) FLEXIBLE POST: 100mm WIDE WHITE PLASTIC OR FIBREGLASS STRIP OF APPROVED TYPE, CAPABLE OF SELF-RECOVERY AFTER KNOCKDOWN. SEE DIAGRAM (III).
- FOR DETAILS OF GUIDE POST SPACING AND SPECIAL TREATMENTS AT BRIDGES AND CULVERTS, REF TRAFFIC ENGINEERING MANUAL VOL 2 SECTION 23. SECTION 23.2 PROVIDES DETAILS OF DELINEATORS.

- THE STANDARD DELINEATOR IS THE 80mm dia. CIRCULAR CORNER-CUBE TYPE, RED OR WHITE, CONFORMING WITH THE TYPE "A" DELINEATOR SPECIFIED IN AS 1906/1981, PART 2.
- WHERE SPECIFIED ON THE DRAWING, SHEETING TYPE DELINEATORS CAN BE USED IN PLACE OF THE STANDARD DELINEATORS. THE SHEETING SHALL HAVE A TOTAL MINIMUM REFLECTIVE OUTPUT EQUIVALENT TO 100cm OF CLASS 1A RETROREFLECTIVE MATERIAL AS DEFINED IN AS/NZS 1906, PART 1. THE WIDTH OF REFLECTIVE MATERIAL SHALL BE 40mm MINIMUM. ONLY ONE TYPE OF DELINEATOR SHALL BE USED AT ANY ONE LOCATION.
- WHERE LOCATED ON A KERBED CARRIAGEWAY, GUIDE POSTS SHALL BE INSTALLED 600mm BEHIND FACE OF KERB

sd-3001c.dgn 30/03/2006 4:09:45 PM

E			
D			
C	J.K.	1/7/05	DIMENSIONS AMENDED, NOTE 2 AMENDED, NOTE 5 ADDED.
B	J.C.	1/9/01	OVERALL LENGTH OF POSTS REMOVED, BELOW SURFACE DEPTH ADDED
A	J.C.	1/7/95	LOCATION OF DELINEATOR, NOTES 3 & 4, GENERAL NOTE 1 ADDED, VERGE WIDTH DELETED
ISSUE	APP'D	DATE	AMENDMENT

GENERAL NOTES	
1. ALL DIMENSIONS ARE IN MILLIMETRES UNLESS OTHERWISE SHOWN.	

DESIGNED	PRINCIPAL ROAD DESIGN ENGINEER
APPROVED	1.7.95 <i>J. Cunningham</i>
CATALOG PROJECT FILENAME	PRED sddgnnew sd-3001c.dgn

vicroads design
ENGINEERING & TECHNOLOGY CONSULTANTS

3 PROSPECT HILL ROAD,
CAMBERWELL,
VICTORIA, 3124
PHONE NO. (03) 9811 8355
FAX NO. (03) 9811 8329

SCALE HOR OF METRES VER **NOT TO SCALE**

STANDARD DRAWING GUIDE POSTS				
FILE NO.	CONTRACT NO.	SHEET NO.	DRAWING NO.	ISSUE
			SD 3001	C