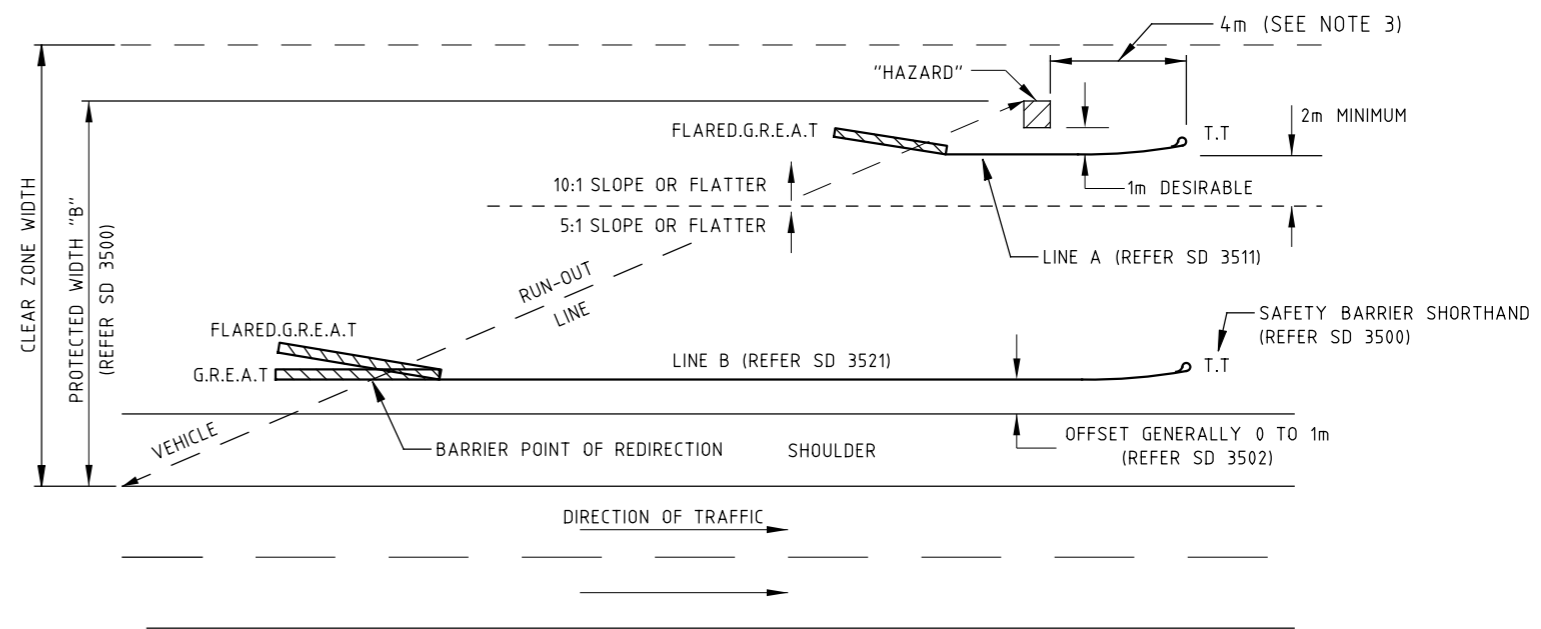
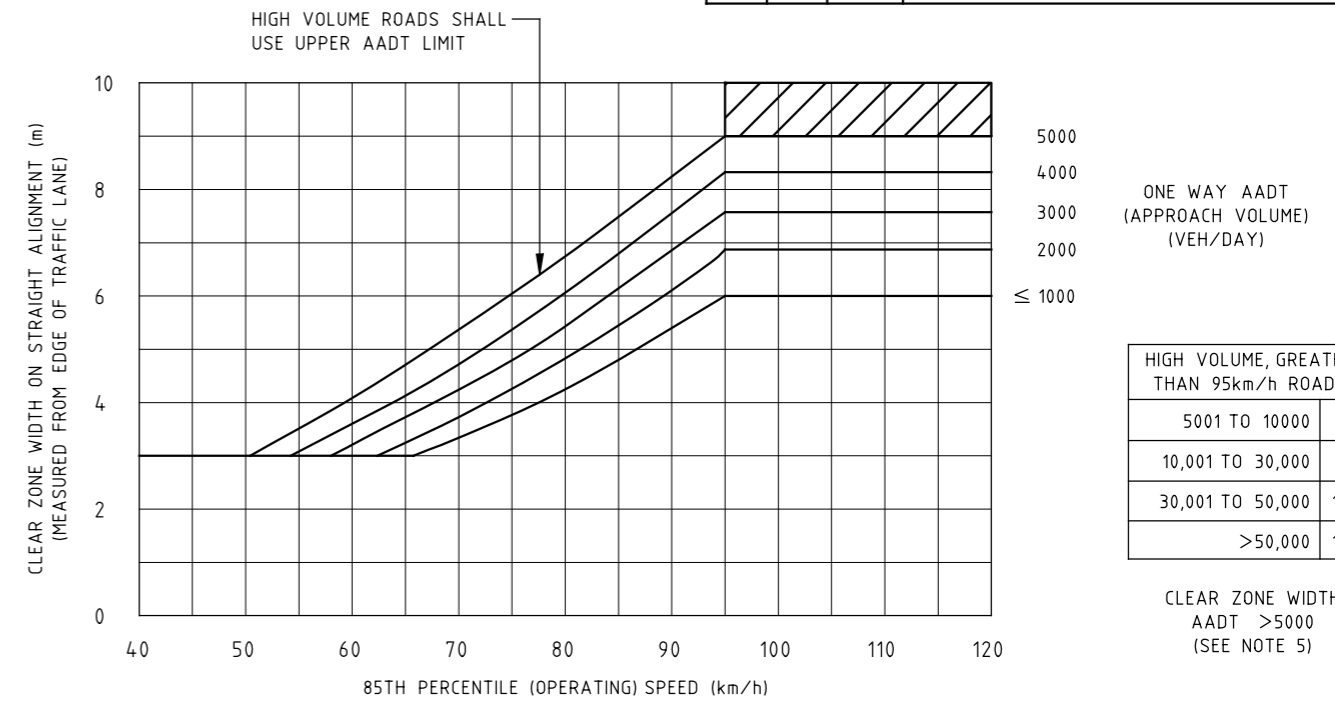
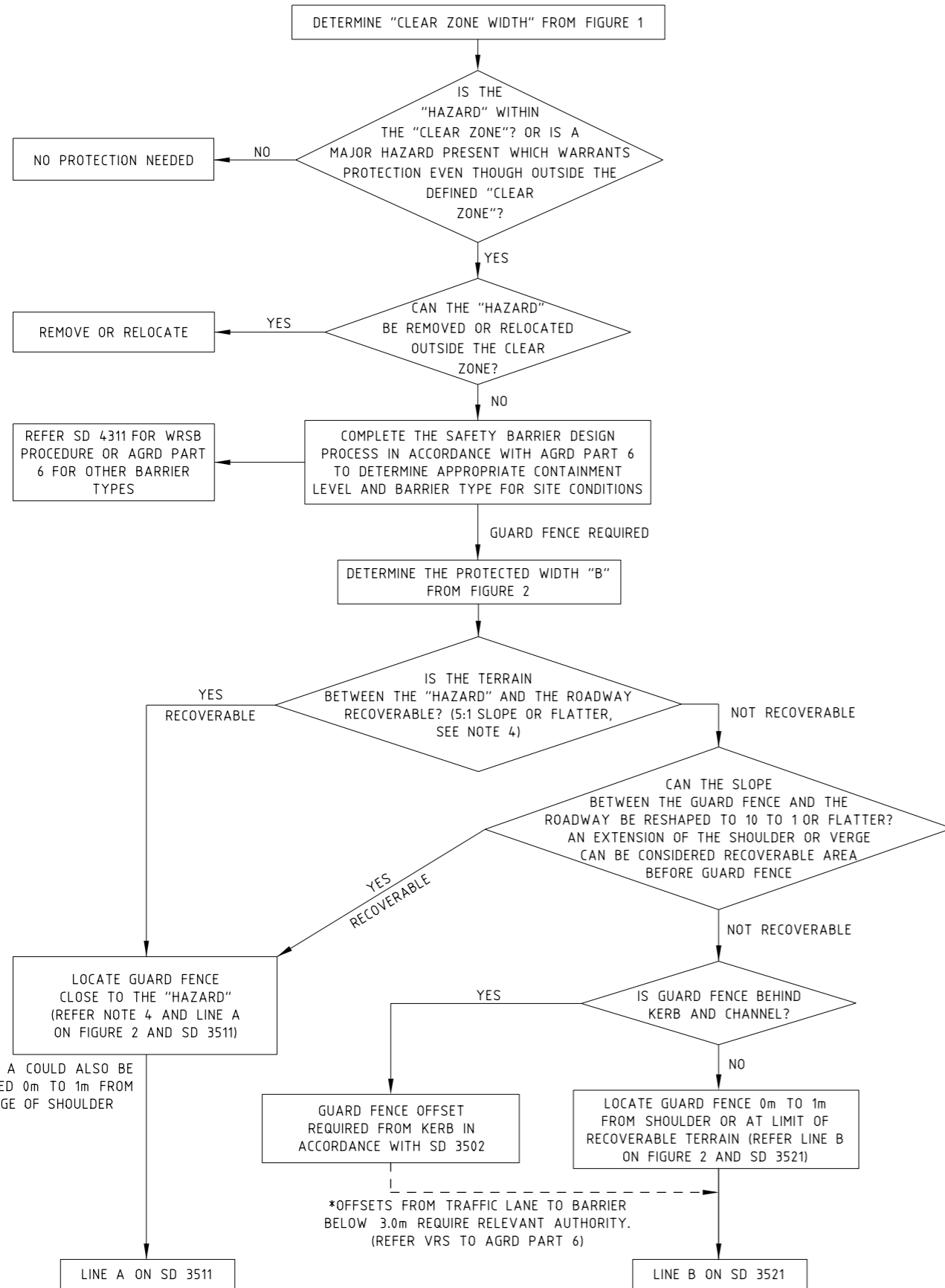


ISSUE	APP'D	DATE	AMENDMENT
H	D.C.	5/14	ADD K+C IN LOCATION PROCEDURE, FIGURE 1, FIGURE 2

LOCATION PROCEDURE



GUARD FENCE LOCATIONS - FIGURE 2 (SEE NOTES 4 AND 6)

- NOTES:
- WHERE POSSIBLE, MINIMISE GUARD FENCE LENGTH BY USING LINE A WITH THE MAXIMUM OFFSET FROM THE ROAD.
 - SAFETY BARRIER TERMINOLOGY, SHORTHAND AND GENERAL REQUIREMENTS SHALL BE IN ACCORDANCE WITH SD 3500.
 - DEPARTURE TERMINALS (TRAILING TERMINALS) MUST NOT BE LOCATED WITHIN THE CLEAR ZONE OF OPPOSING TRAFFIC. USE AN ACCEPTED APPROACH GF TERMINAL. REFER RDN 06-04.
 - AN OBSTACLE-FREE AREA AT LEAST 2m WIDE WITH A SLOPE NOT STEEPER THAN 10 TO 1 SHALL BE PROVIDED IN FRONT OF GUARD FENCE. (SEE LINE A IN FIGURE 2). IDEALLY THIS FLAT AREA SHOULD COVER THE FULL WIDTH FROM THE EDGE OF VERGE TO THE GUARD FENCE.
 - THE CLEAR ZONE WIDTH IN FIGURE 1 SHALL BE ADJUSTED FOR CURVES AND BATTERS ACCORDING TO THE METHOD SPECIFIED IN AGRD PART 6, SECTION 4.2.2.

REFERENCES AND NOTES:
 1. ALL DIMENSIONS ARE IN MILLIMETRES UNLESS SHOWN OTHERWISE.
 2. SAFETY BARRIERS SHALL BE VICROADS ACCEPTED PRODUCTS IN ACCORDANCE WITH RDN 06-04.

SD 3500 TERMINOLOGY, SHORTHAND AND GENERAL REQUIREMENTS
 SD 3502 BARRIER LOCATION RELATIVE TO KERB AND SHOULDER
 SD 3511 SAFETY BARRIER LINE A ALIGNMENT DETAILS
 SD 3521 SAFETY BARRIER LINE B ALIGNMENT DETAILS
 SD 3573 WRSB FLARED TERMINAL DETAILS
 RDN 06-04 VICROADS ACCEPTED SAFETY BARRIER PRODUCTS
 RDN 06-08 USE OF STEEL GUARD FENCE
 AGRD AUSTRROADS GUIDE TO ROAD DESIGN PART 6

TECHNICAL SERVICES
 3 PROSPECT HILL ROAD
 CAMBERWELL
 VICTORIA 3124
 PHONE (03) 9811 8355
 FAX (03) 9811 8329



ROAD SAFETY BARRIERS GUARD FENCE LOCATION PROCEDURE

NOT TO SCALE	APPROVED D.CASSAR	SD NO. 8/5/14 SD 3501	ISSUE H
--------------	----------------------	-----------------------------	------------

VicRoads Drawing No. 720274