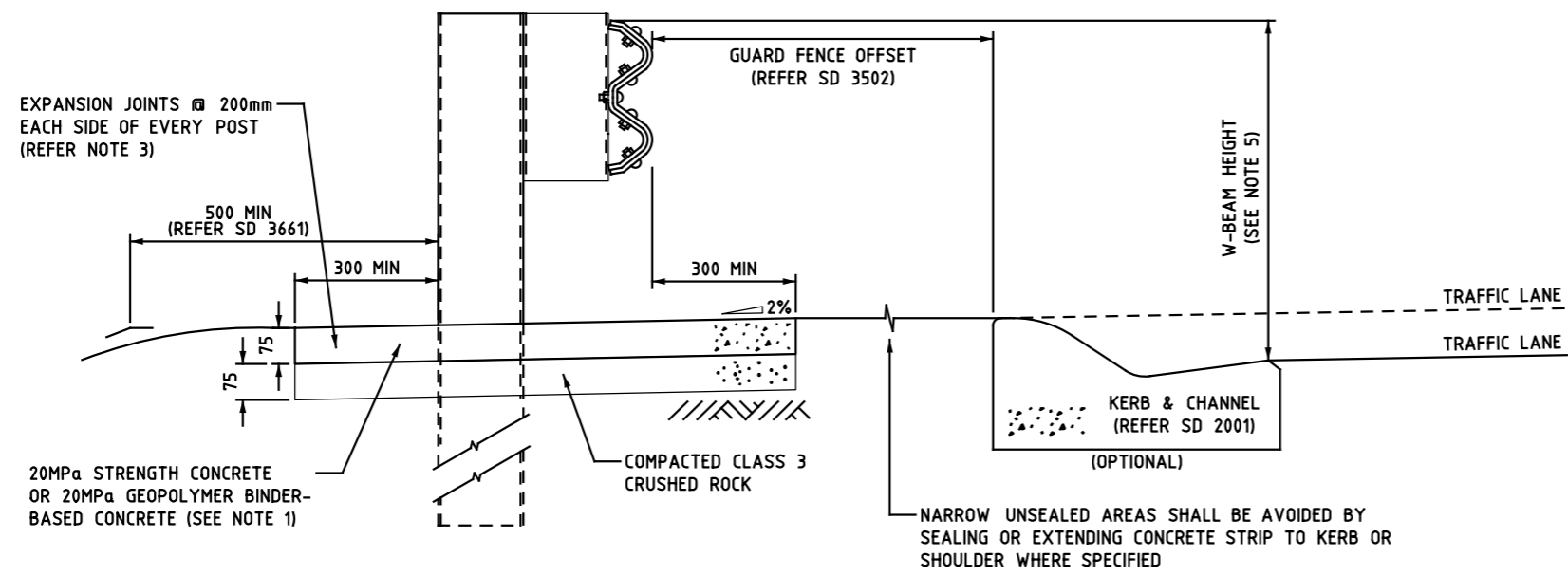
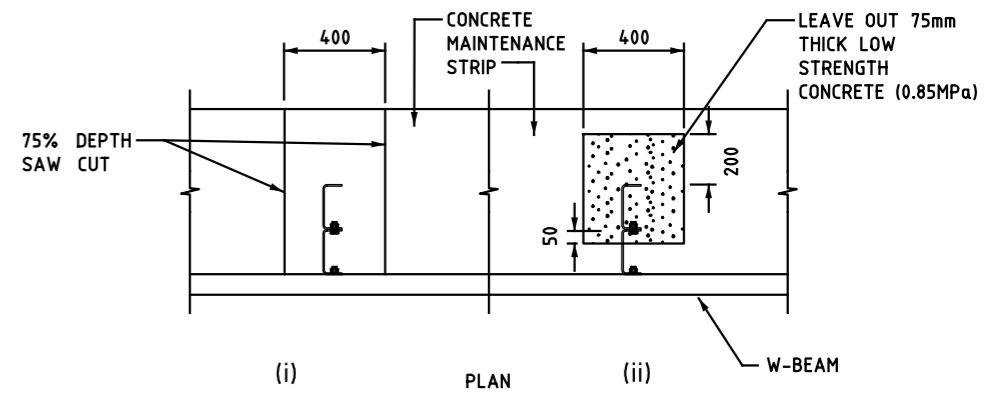


ISSUE			
A	D.C	9/2/2017	ADDITION OF MAINTENANCE STRIP ALTERNATIVES + DRAWING



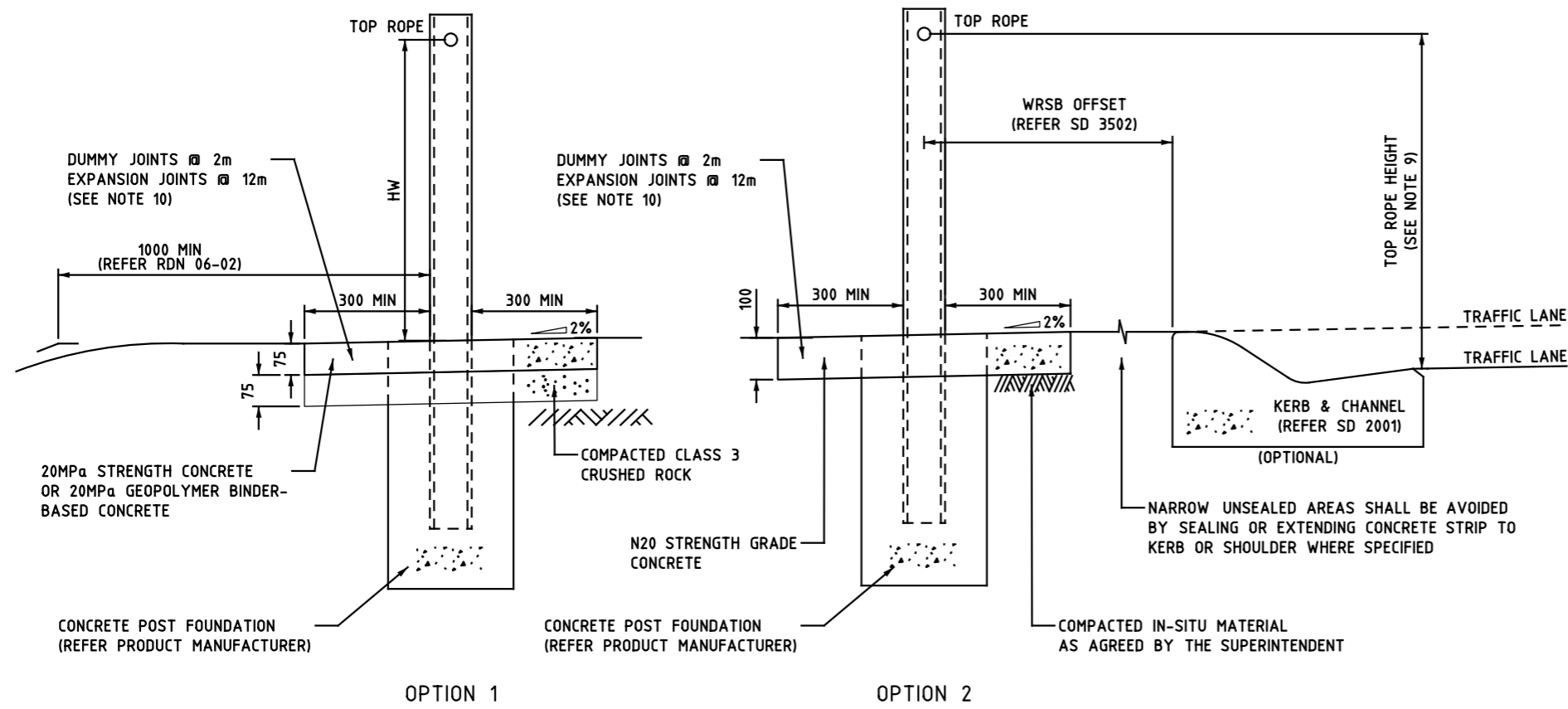
GUARD FENCE CONCRETE MAINTENANCE STRIP

- GUARD FENCE CONCRETE MAINTENANCE STRIP NOTES:**
1. CONCRETE MAINTENANCE STRIP SHALL NOT BE GREATER THAN 75mm THICK AND 20MPa STRENGTH AS PERFORMANCE OF THE BARRIER SYSTEM CAN BE AFFECTED.
 2. CONCRETE MAINTENANCE STRIP SHALL HAVE A MINIMUM 2% CROSSFALL OR WITH THE SAME SLOPE AS THE ABUTTING PAVEMENT. PREFERRED CROSSFALL DIRECTION IS AWAY FROM THE TRAFFIC LANE UNLESS SPECIFIED. WHERE THE CROSSFALL IS TOWARDS THE TRAFFIC LANE, A MAXIMUM SLOPE OF 5% SHALL BE PROVIDED TO ENSURE THE RELATIVE HEIGHT OF GUARD FENCE TO GROUND SURFACE IS NOT COMPROMISED.
 3. FULL DEPTH EXPANSION JOINTS (CORK OR APPROVED EQUIVALENT) SHALL BE PROVIDED, PERPENDICULAR TO THE LINE OF THE STEEL BEAM GUARD FENCE, 200mm EACH SIDE OF EVERY POST. ALTERNATIVELY, THE FOLLOWING 2 OPTIONS COULD ALSO BE CONSIDERED; (i) A 75% DEPTH (56mm) SAW CUT (200mm EACH SIDE OF EVERY POST) FOR THE FULL WIDTH OF THE MAINTENANCE STRIP; (ii) A LEAVE-OUT AREA AROUND THE POST FILLED WITH 75mm THICK LOW STRENGTH CONCRETE MIX (LESS THAN 0.85MPa), AS SHOWN BELOW.
 4. EXPANSION JOINTS (CORK OR APPROVED EQUIVALENT) SHALL BE USED WHERE MAINTENANCE STRIP IS ADJACENT TO KERB OR PAVEMENT.
 5. WHERE GUARD FENCE IS ERECTED WITHIN 0 TO 1m BEHIND BACK OF KERB, THE W-BEAM MOUNTING HEIGHT SHALL BE MEASURED FROM LIP OF KERB. WHEN ERECTED WITHIN 0 TO 1.5m FROM EDGE OF CARRIAGEWAY WITHOUT KERB (TYPICALLY THE EDGE LINE), THE HEIGHT SHALL BE MEASURED FROM THE EDGE OF CARRIAGEWAY. FOR DISTANCES BEYOND THIS, THE HEIGHT SHALL BE MEASURED FROM THE NOMINAL GROUND HEIGHT DIRECTLY BENEATH THE W-BEAM RAIL.
 6. PARTICULAR ATTENTION SHALL BE GIVEN AT TERMINALS TO ENSURE THAT ANY ABOVE GROUND LEVEL MOVING COMPONENTS SUCH AS GROUND STRUTS OR CABLES ARE NOT RESTRICTED FROM FUNCTIONING BY CONCRETE PLACEMENT. REFER MANUFACTURER SPECIFICATIONS FOR MOVING COMPONENTS.



DETAIL OF CONCRETE MAINTENANCE STRIP SAW CUT AND LEAVE OUT (REFER NOTE 3)

- WIRE ROPE SAFETY BARRIER CONCRETE MAINTENANCE STRIP NOTES:**
7. CONCRETE MAINTENANCE STRIP SHALL HAVE A MINIMUM 2% CROSSFALL OR WITH THE SAME SLOPE AS THE ABUTTING PAVEMENT. PREFERRED CROSSFALL DIRECTION IS AWAY FROM THE TRAFFIC LANE UNLESS SPECIFIED. MEDIAN APPLICATIONS SHALL CONSIDER SITE SPECIFIC DRAINAGE CONDITIONS.
 8. FULL DEPTH EXPANSION JOINTS SHALL BE PLACED AT INTERVALS NOT EXCEEDING 12m AND DUMMY JOINTS AT LEAST 20mm DEEP AND 5mm WIDE SHALL BE FORMED AT 2m INTERVALS FOR THE FULL WIDTH OF THE MAINTENANCE STRIP.
 9. WHERE WRSB IS ERECTED WITHIN 0 TO 1m BEHIND BACK OF KERB, THE MOUNTING HEIGHT SHALL BE MEASURED FROM LIP OF KERB. WHEN ERECTED WITHIN 0 TO 1.5m FROM EDGE OF CARRIAGEWAY WITHOUT KERB (TYPICALLY THE EDGE LINE), THE HEIGHT SHALL BE MEASURED FROM EDGE OF CARRIAGEWAY. FOR DISTANCES BEYOND THIS, THE HEIGHT SHALL BE MEASURED FROM THE NOMINAL GROUND HEIGHT DIRECTLY BENEATH THE WIRE ROPE.
 10. CONCRETE MAINTENANCE STRIP SHALL BE PLACED BETWEEN AND AROUND POST FOUNDATIONS TO NOT AFFECT THE PERFORMANCE OF THE WRSB. REFER TO PRODUCT SUPPLIER REQUIREMENTS.
 11. WHERE THE WIDTH OF THE WRSB TERMINAL FOUNDATION IS LESS THAN THE WIDTH OF LONGITUDINAL MAINTENANCE STRIP, THE CONCRETE MAINTENANCE STRIP SHALL BE EXTENDED TO THE END OF THE TERMINAL FOUNDATION.



WRSB CONCRETE MAINTENANCE STRIP

REFERENCES AND NOTES:
 1. ALL DIMENSIONS ARE IN MILLILETRES UNLESS SHOWN OTHERWISE.
 2. SAFETY BARRIERS SHALL BE VICROADS ACCEPTED PRODUCTS IN ACCORDANCE WITH RDN 06-04.
 3. MAINTENANCE STRIPS SHALL BE DESIGNED AND CONSTRUCTED IN ACCORDANCE WITH VICROADS STANDARD SECTIONS.

VSS 703	GENERAL CONCRETE PAVING
VSS 708	STEEL BEAM GUARD FENCE
VSS 711	WIRE ROPE SAFETY BARRIER (WRSB)
VSS 812	CRUSHED ROCK FOR PAVEMENT BASE AND SUBBASE
SD 2001	KERBS
SD 3661	GUARD FENCE (TYPE B)
RDN 06-02	USE OF WIRE ROPE SAFETY BARRIERS (WRSB)
RDN 06-08	USE OF STEEL GUARD FENCE

TECHNICAL SERVICES



ROAD SAFETY BARRIERS
 CONCRETE MAINTENANCE STRIP FOR
 GUARD FENCE AND WIRE ROPE SAFETY BARRIERS

NOT TO SCALE	APPROVED D.CASSAR	SD NO. 8/5/14 SD 3503	ISSUE A
--------------	----------------------	-----------------------------	------------

VicRoads Drawing No. 720276