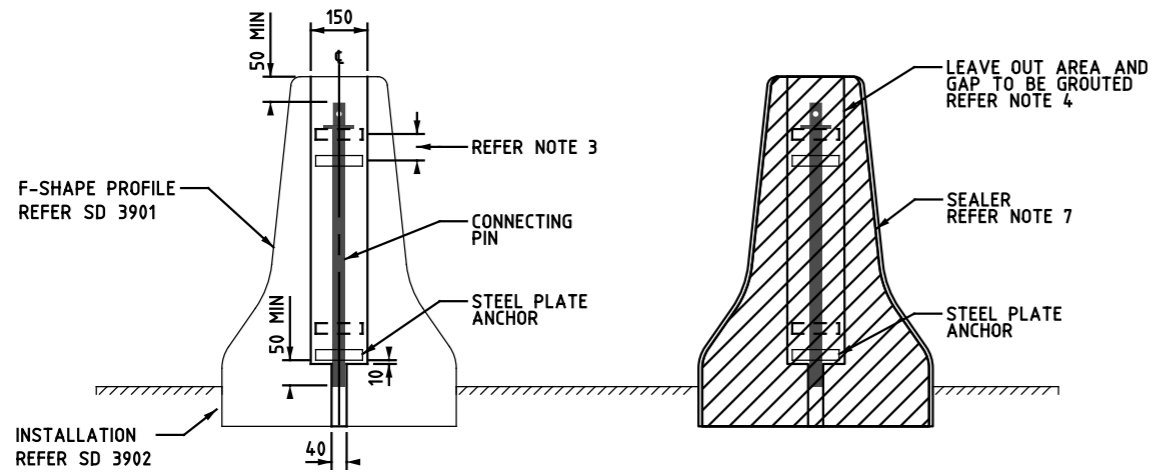
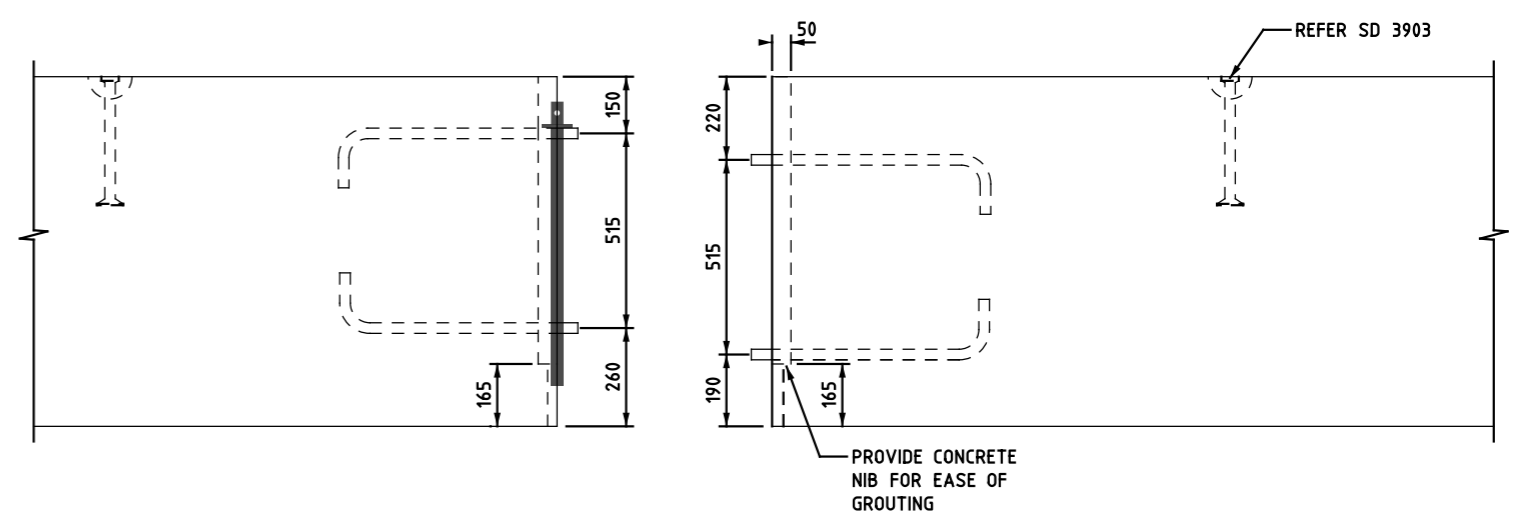


ISSUE	APPROVED BY	DATE	AMENDMENT
B	M-RD&SSE	12/21	RENAMED AND REISSUED FOR SLIP FORM BARRIER UPDATE

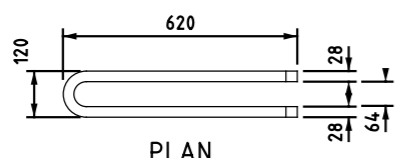


TYPICAL TEST LEVEL 3 CONNECTION

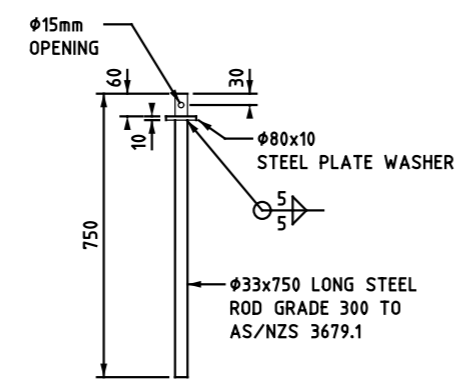
TYPICAL GROUTING



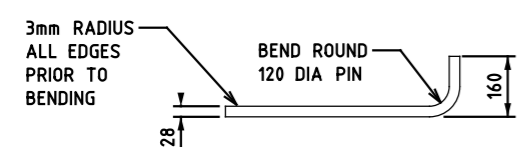
SIDE ELEVATION



PLAN

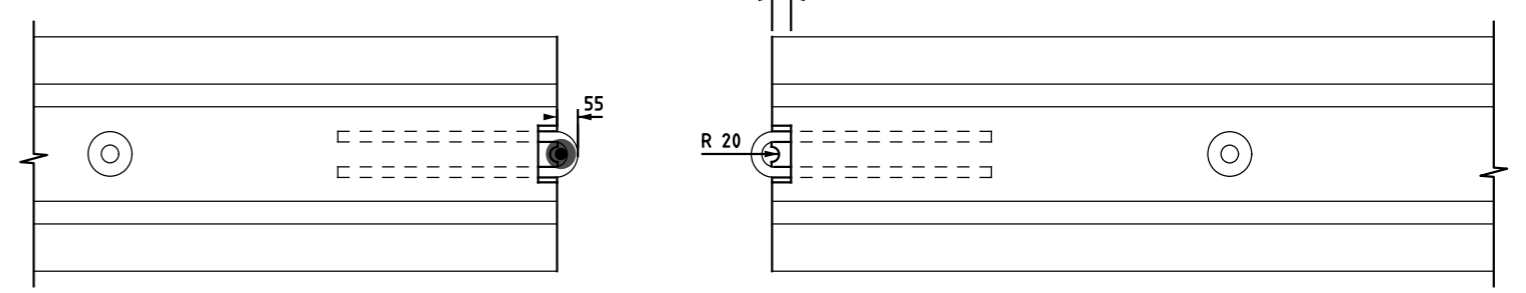


CONNECTING PIN

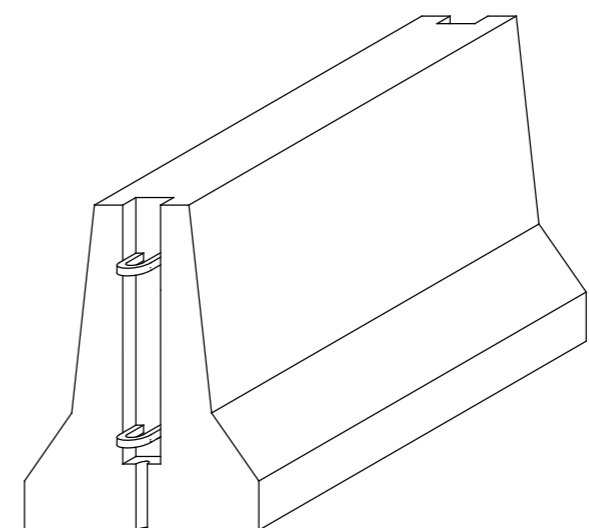


ELEVATION

STEEL PLATE ANCHOR



PLAN



ISOMETRIC VIEW (NOT TO SCALE)

- GENERAL:**
- ALL PRECAST BARRIER CONNECTIONS REQUIRE A SPECIFIC DESIGN AND APPROVAL, CONSIDERING ALL SHAPE (SD3901), INSTALLATION (SD3902) AND CONSTRUCTION (SD3903) REQUIREMENTS.
 - PRECAST CONCRETE BARRIERS MUST BE CONNECTED USING A PIN AND LOOP CONNECTION, AS SHOWN, OR AN APPROVED ALTERNATIVE THAT HAS;
 - BEEN CRASH TESTED TO THE REQUIRED TEST LEVEL, OR
 - BEEN DESIGNED TO WITHSTAND THE 'ULTIMATE TRANSVERSE OUTWARD LOAD' SPECIFIED IN AS5100.2 TABLE 12.2.2, IN SHEAR FORCE.
 MASH TL-3 CONNECTIONS MUST APPLY THE MASH TL-4 DESIGN LOAD (i.e. 300kN). TYPICAL PIN AND LOOP CONNECTION SHOWN IS RATED TO MASH TL-3. HIGHER TEST LEVEL CONNECTIONS REQUIRE ADDITIONAL STRENGTH.
 - PRECAST CONNECTIONS SHOULD ALLOW FOR INDIVIDUAL UNITS TO BE REMOVED AND REPLACED. STEEL PLATE ANCHORS MUST BE SEPERATED BY 70mm OR MORE.
 - THE CONNECTING PIN MUST EXTEND 50mm OR MORE BELOW THE BOTTOM STEEL PLATE ANCHOR. THE CONNECTING PIN MUST SIT 50mm OR MORE BELOW THE TOP OF BARRIER WHEN FULLY INSERTED.
 - PRECAST CONNECTIONS MUST BE DESIGNED IN CONJUNCTION WITH THE REINFORCEMENT TO PREVENT CLASH.
 - PRECAST BARRIER DESIGNS MUST ALLOW FOR EASE OF GROUTING USING A SUITABLE GROUTING MATERIAL AS SPECIFIED IN CLAUSE 610.33 OF VICROADS SPECIFICATION. PIN AND LOOP CONNECTIONS REQUIRE A 'LEAVE OUT' AREA. TYPICAL DIMENSIONS ARE 150mm WIDE x 50mm DEEP, FROM TOP OF BARRIER UNIT TO 10mm BELOW BOTTOM LOOP.
 - SEALER TO BE 25mm MEGAPRENE 40 OR AN APPROVED EQUIVALENT.
- STEEL WORK:**
- STEEL WORK MUST BE GRADE 300 AND COMPLY WITH AS/NZS3678 UNLESS NOTED OTHERWISE. WELDING MUST CONFORM TO AS/NZS1554.1.

REFERENCES AND NOTES:
 1. ALL DIMENSIONS ARE IN MILLIMETRES UNLESS SHOWN OTHERWISE.

DISCLAIMER
 THIS DRAWING DOES NOT COVER PERFORMANCE LEVEL BARRIERS WHICH SHALL BE DESIGNED TO FULLY COMPLY WITH THE REQUIREMENTS OF AS5100 IRRESPECTIVE OF THIS DRAWING

ROAD AND TRAFFIC DESIGN
 MANAGER SAFE SYSTEM ENGINEERING
 60 DENMARK STREET KEW VICTORIA 3101
 PHONE (03) 9854 2666



ROAD SAFETY BARRIERS			
PRECAST CONCRETE BARRIER F-SHAPE CONNECTIONS - PIN & LOOP			
NOT TO SCALE	APPROVED M-SSE	SD NO. 02/2019 SD3904	ISSUE B

VicRoads Drawing No. 7204/20