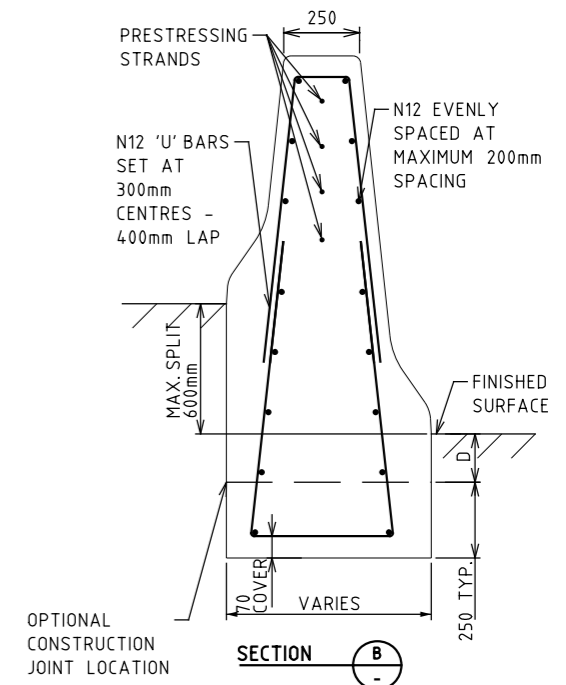
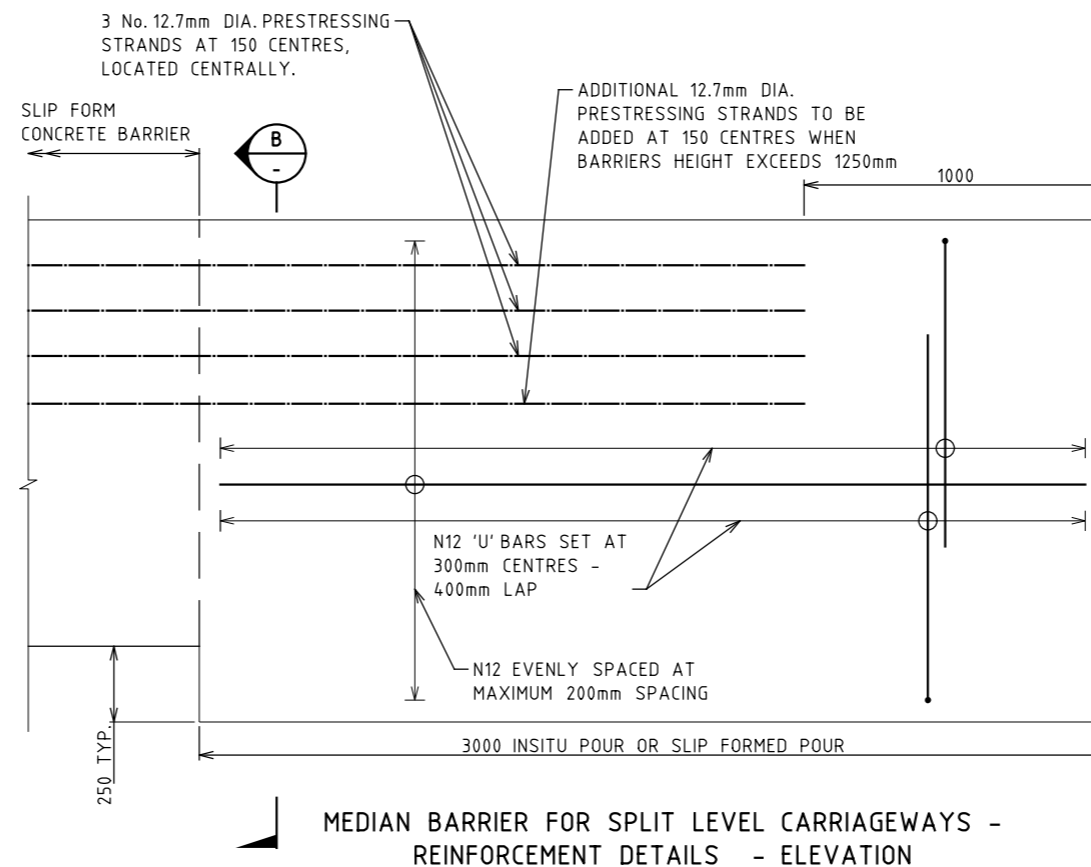
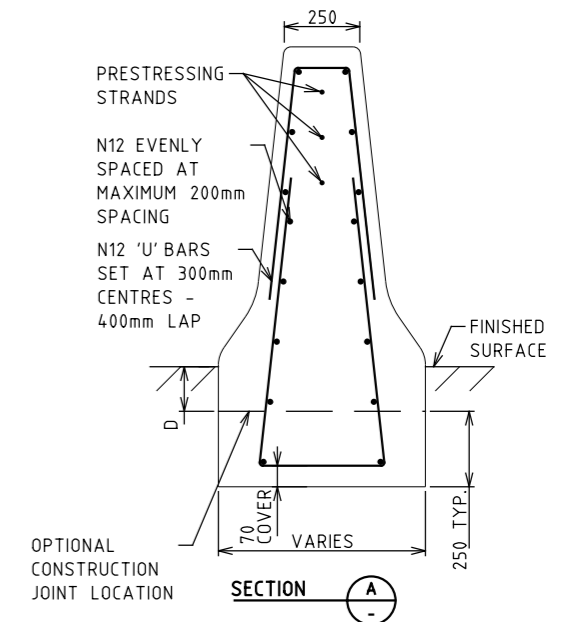
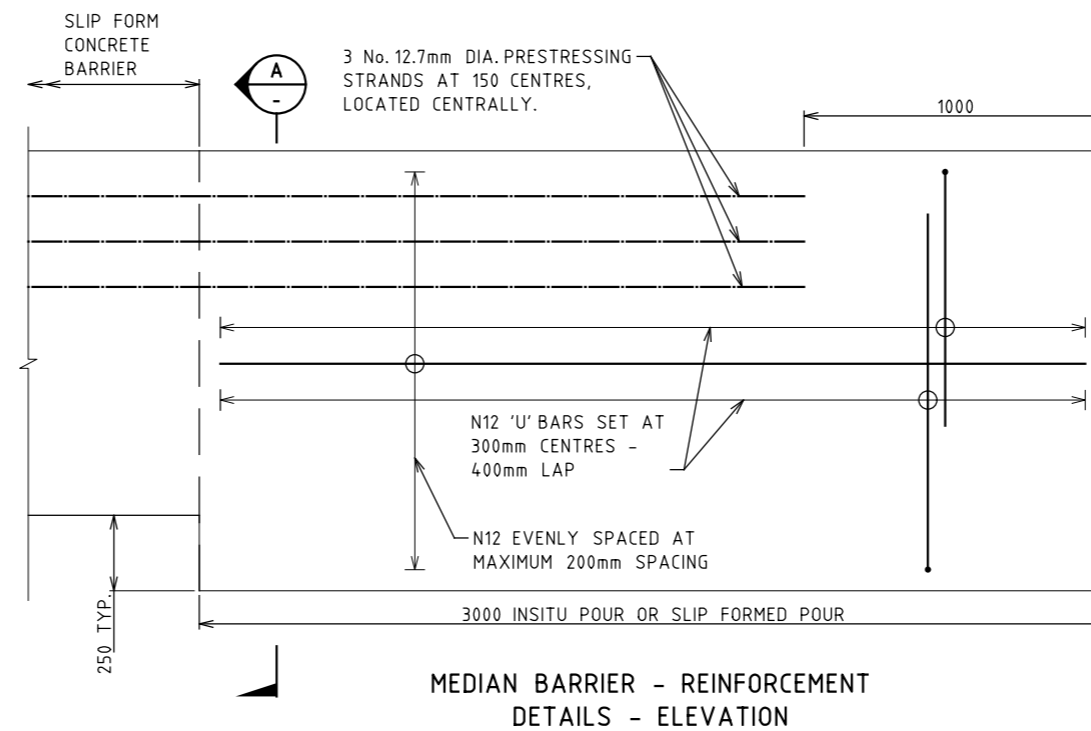


ISSUE	APPROVED BY	DATE	AMENDMENT



**NOTES**

1. THE ANCHOR FOOTING MAY BE CAST INTEGRALLY WITH THE SLIP FORM BARRIER OR MAY BE CAST IN-SITU PRIOR TO SLIP FORMING WITH A PREPARED CONSTRUCTION JOINT AT THE TOP OF THE ANCHOR FOOTING. CONSTRUCTION JOINT MUST BE IN ACCORDANCE WITH CLAUSE 610.20.
2. SLIP FORM BARRIER CONSTRUCTION SHALL BE IN ACCORDANCE WITH SD3906.
3. THE ANCHOR FOOTING MAY BE AT EXPANSION JOINT OR CONSTRUCTION JOINT OR WITHIN A CONTINUOUS LENGTH OF BARRIER TO SUIT THE BARRIER DESIGN REQUIREMENTS. THE EXTENT OF THE PRESTRESSING STANDS SHALL BE ADJUSTED TO SUIT THE LOCATION WITH THE STRAND CONTINUING THROUGH CONSTRUCTION JOINTS AND CONTINUOUS SECTIONS OF BARRIER.
4. MINIMUM COVER FOR REINFORCEMENT BARS TO BE 50mm.
5. CONDUITS TO BE POSITIONED TO ALLOW ACCESS FOR ANY NECESSARY JUNCTION BOXES OR TERMINATIONS.

**REFERENCES AND NOTES:**

1. ALL DIMENSIONS ARE IN MILLIMETRES UNLESS SHOWN OTHERWISE.

**DISCLAIMER**  
THIS DRAWING DOES NOT COVER PERFORMANCE LEVEL BARRIERS WHICH SHALL BE DESIGNED TO FULLY COMPLY WITH THE REQUIREMENTS OF AS5100 IRRESPECTIVE OF THIS DRAWING

ROAD AND TRAFFIC DESIGN

MANAGER  
SAFE SYSTEM  
ENGINEERING

60 DENMARK STREET  
KEW VICTORIA 3101  
PHONE (03) 9854 2666



**ROAD SAFETY BARRIERS**  
SLIP FORM CONCRETE BARRIER  
F-SHAPE TERMINALS

NOT TO SCALE

APPROVED  
M-RD&SSE

12/2021

SD NO.  
SD3907

ISSUE