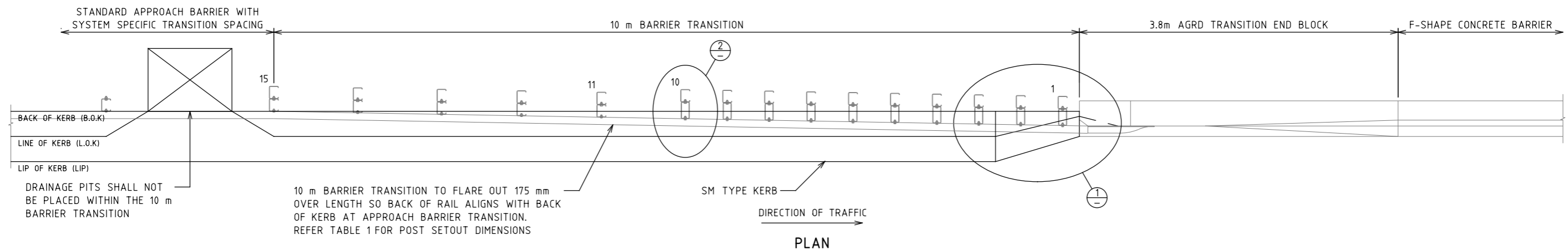
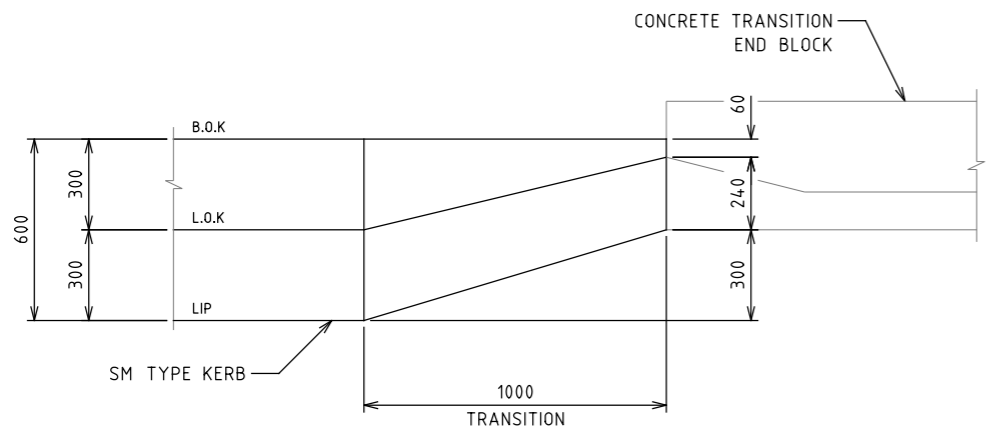


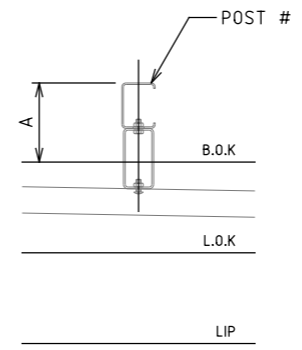
ISSUE	APPROVED BY	DATE	AMENDMENT



PLAN



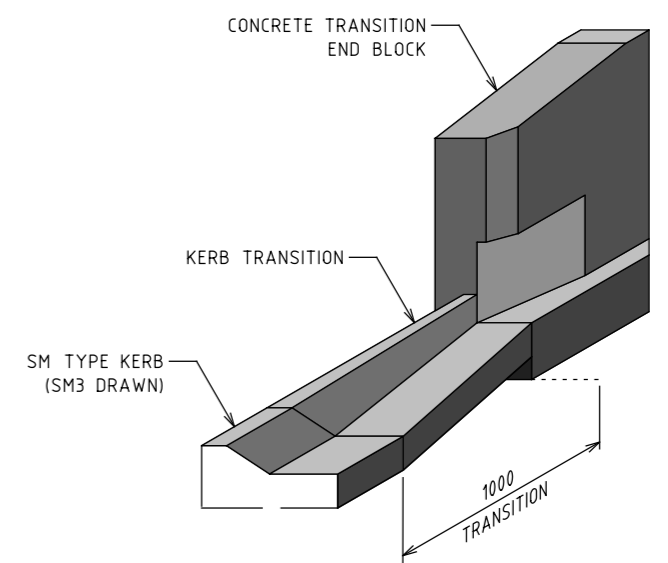
DETAIL 1 - PLAN
KERB END TRANSITION
NOTE:
BARRIER NOT SHOWN FOR CLARITY



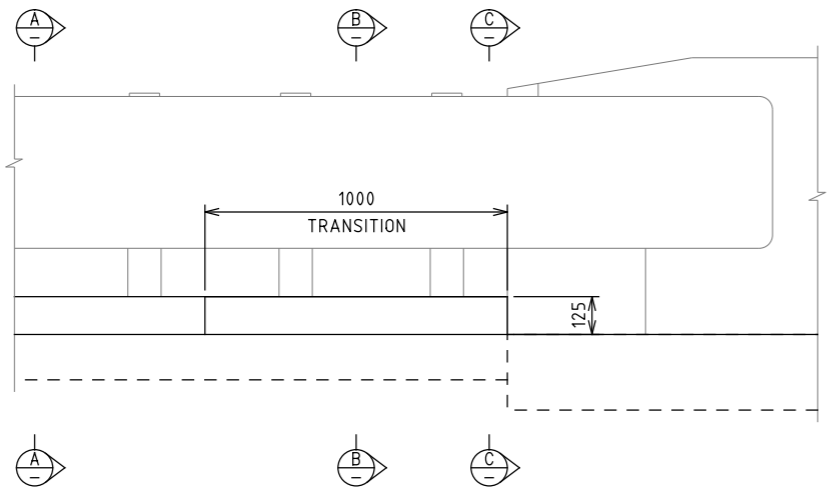
DETAIL 2
POST SETOUT

POST #	'A'
1	180
10	262
11	230
15	300

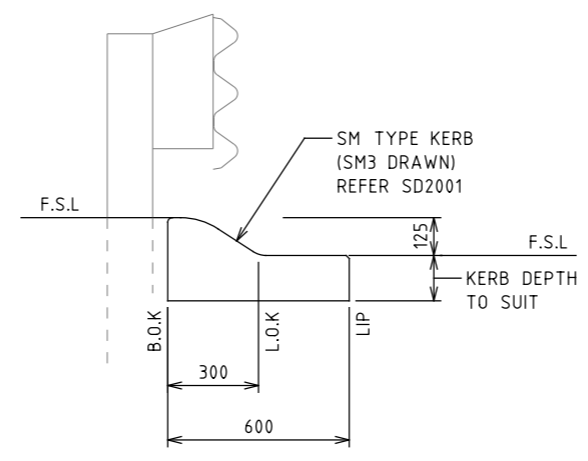
NOTE:
DIMENSION 'A' TAKEN AT POST CENTRELINE FROM BACK OF KERB TO BACK OF POST



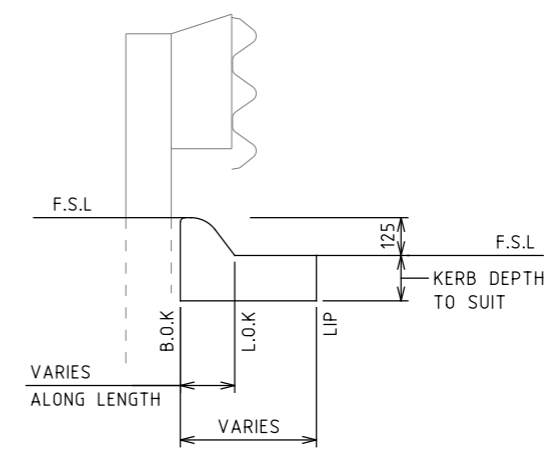
KERB TRANSITION
ISOMETRIC VIEW



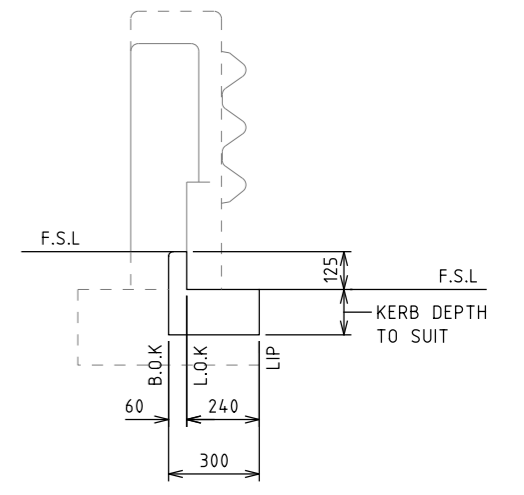
DETAIL 1 - ELEVATION
KERB END TRANSITION



SECTION A



SECTION B



SECTION C

- NOTES:
- ALL DIMENSIONS ARE IN MILLIMETRES UNLESS SHOWN OTHERWISE.
 - THIS DRAWING IS TO BE READ IN CONJUNCTION WITH DRAWINGS SD3951 TO SD3955, AND THE SUPPLEMENT TO AGRD PART 6.
 - REFER SD2001 FOR FURTHER KERB DETAILS.
 - SUBSURFACE DRAINAGE NOT SHOWN FOR CLARITY.

DISCLAIMER

THIS DRAWING DOES NOT COVER BRIDGE AND BRIDGE APPROACH BARRIERS WHICH SHALL BE DESIGNED TO FULLY COMPLY WITH THE REQUIREMENTS OF AS 5100 IRRESPECTIVE OF THESE DRAWINGS.

ROAD AND TRAFFIC DESIGN

MANAGER SAFE SYSTEM ENGINEERING

60 DENMARK STREET KEW VICTORIA 3101 PHONE (03) 9854 2666



ROAD SAFETY BARRIERS

GUARD FENCE TO CONCRETE BARRIER TRANSITION KERB TRANSITION

NOT TO SCALE

APPROVED M-RD&SSE

12/2021

SD NO. SD3956

ISSUE

VicRoads Drawing No. 720452