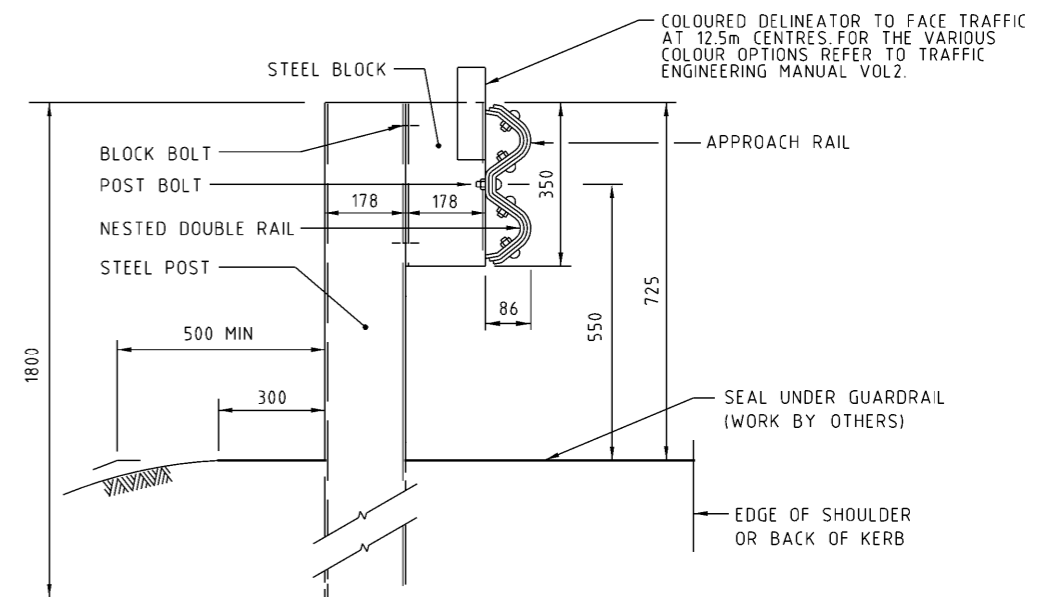
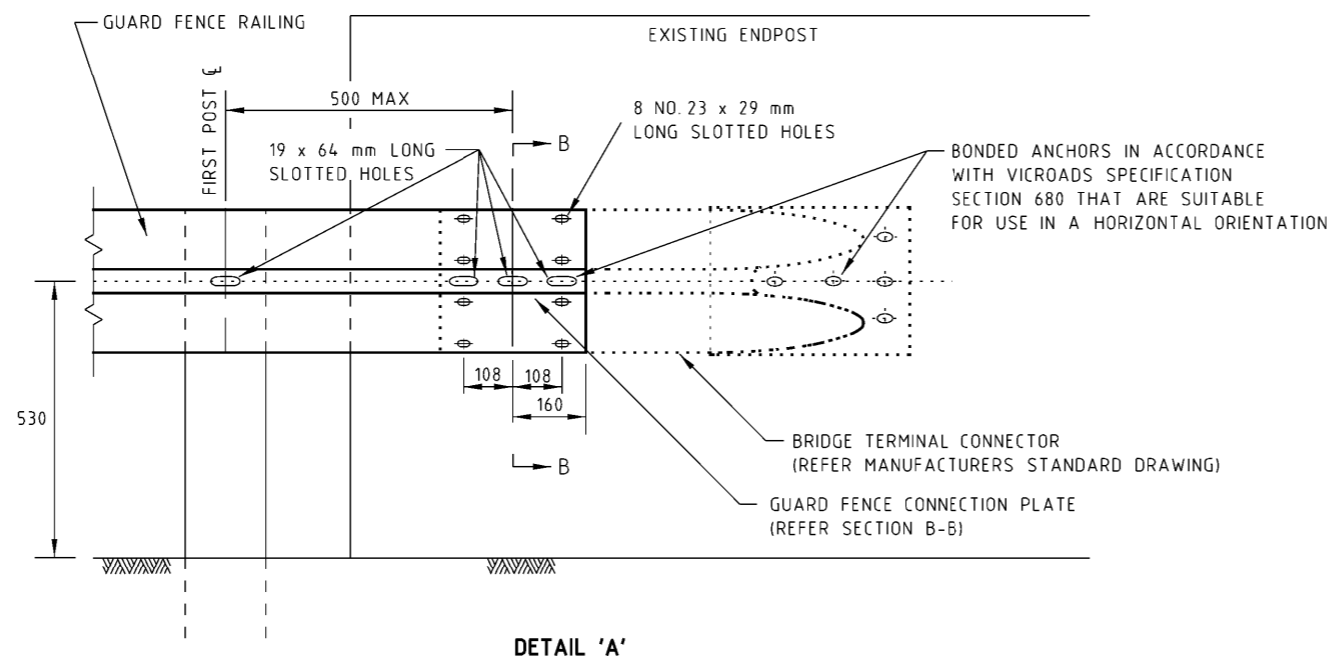


GUARD FENCE ATTACHMENT TO EXISTING BRIDGE ENDPOST



SECTION A-A

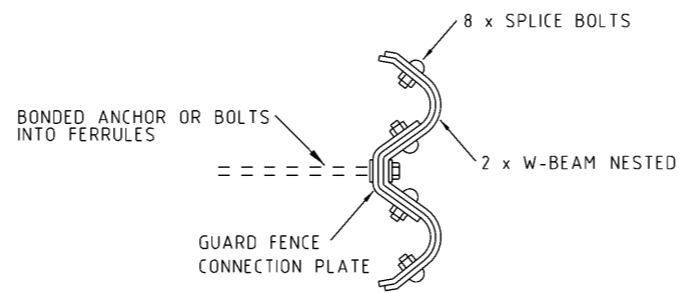


DETAIL 'A'

BOLT SCHEDULE FOR GUARD FENCE CONNECTION PLATE

- 8 SPLICE BOLTS
- 8 OVERSIZE NUTS
- 3 BONDED ANCHORS

* REFER SD 3661 FOR BOLT DETAILS



SECTION B-B

NOTES:

1. AT EXISTING ENDPOSTS: THE USE OF BONDED ANCHORS AT BRIDGE TERMINAL CONNECTOR AND GUARD FENCE CONNECTION PLATE IS ACCEPTABLE.
2. FOR NEW ENDPOSTS: CAST-IN FERRULES WITH REINFORCEMENT FOR ANCHOR BOLTS, TERMINAL CONNECTOR AND CONNECTION PLATE MUST BE USED. ALTERNATIVELY PROVIDE BOLT CONNECTION THROUGH THE COMPLETE WIDTH OF THE ENDPOST.
3. FOR DETAILS OF STEEL POSTS, BLOCKS, BOLTS AND CONCRETE PAVING, REFER SD 3661.
4. BACKING RAIL, 300mm LONG, WITH GUARD RAIL PROFILE, SHALL BE PROVIDED AT ALL INTERMEDIATE POSTS FOR SINGLE W-BEAMS. NO BACKING RAIL IS REQUIRED FOR NESTED W-BEAMS.
5. FOR THE GEOMETRY OF THE GUARD FENCE APPROACHES REFER SD 4071 AND CONSTRUCTION DRAWINGS.
6. WHERE THE FACE OF GUARD FENCE IS ERECTED WITHIN 0 TO 1m BEHIND THE BACK OF KERB, THE MOUNTING HEIGHT SHALL BE MEASURED FROM THE ADJACENT ROAD PAVEMENT SURFACE.
7. WASHERS ARE NOT TO BE PROVIDED AT POST BOLTS.
8. REFER TO BRIDGE DRG 181347 FOR GUARD FENCE CONNECTION PLATE.

ISSUE	APP'D	DATE	AMENDMENT
E			
D			
C	D.C.	5/3/12	NOTES 1 & 2 ADDED, BOLT SCHEDULE, SECTION B-B & DELINEATOR NOTE ON SECTION A-A AMENDED
B	J.K.	1/7/05	APPROACH BARRIER POSTS AND SPACINGS AMENDED
A	J.B.	1/8/02	NOTE 5 ADDED & DIMENSIONS FROM GROUND TO POST AMENDED

GENERAL NOTES
 1. GUARD FENCE - LAYOUTS FOR BRIDGE APPROACHES SD 4071
 2. GUARD FENCE (TYPE B) - STEEL POST SD 3661
 3. ALL DIMENSIONS ARE IN MILLIMETRES UNLESS SHOWN OTHERWISE

DESIGNED
 PRINCIPAL ROAD
 DESIGN ENGINEER
 APPROVED
 CATALOG: PRED
 PROJECT: sddgnnew

ENGINEERING & TECHNOLOGY CONSULTANTS
 COMPUTER FILE sd-4084c.dgn
 SCALE OF METRES HOR NOT TO SCALE
 VER

STANDARD DRAWING					
GUARD FENCE TRANSITION					
BRIDGE APPROACHES -					
GUARD FENCE TO EXISTING ENDPOST					
FILE NO.	CONTRACT NO.	SHEET NO.	DRAWING NO.	ISSUE	
			SD 4084	C	