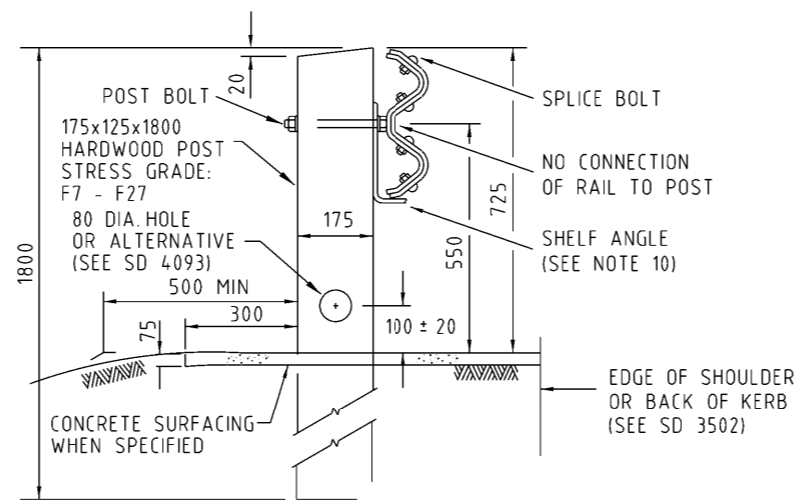
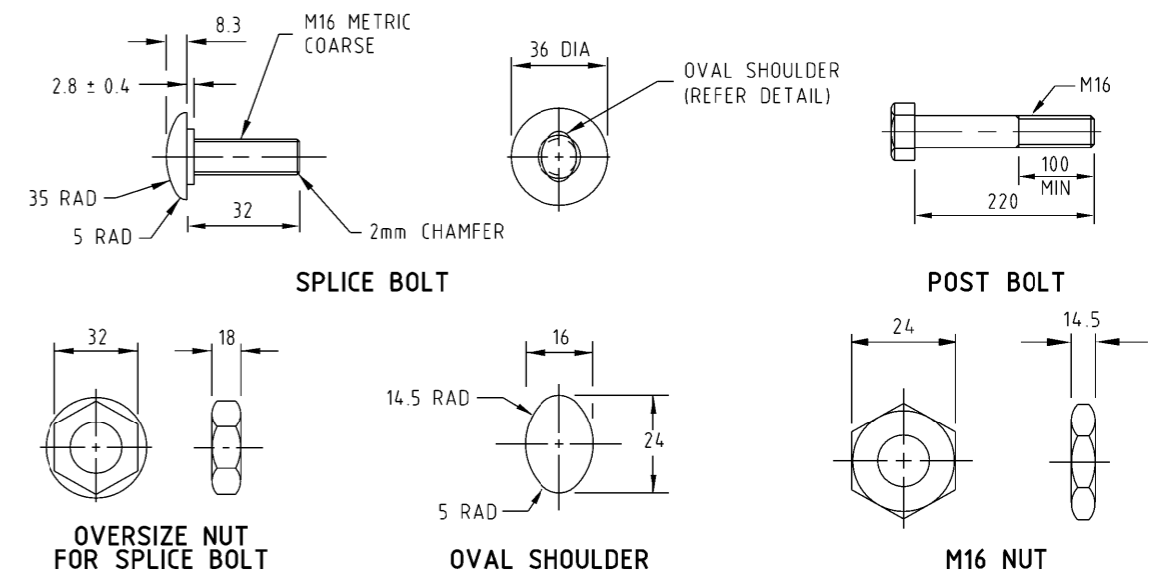


POST TYPE # 3 (SEE NOTES 9 AND 11)

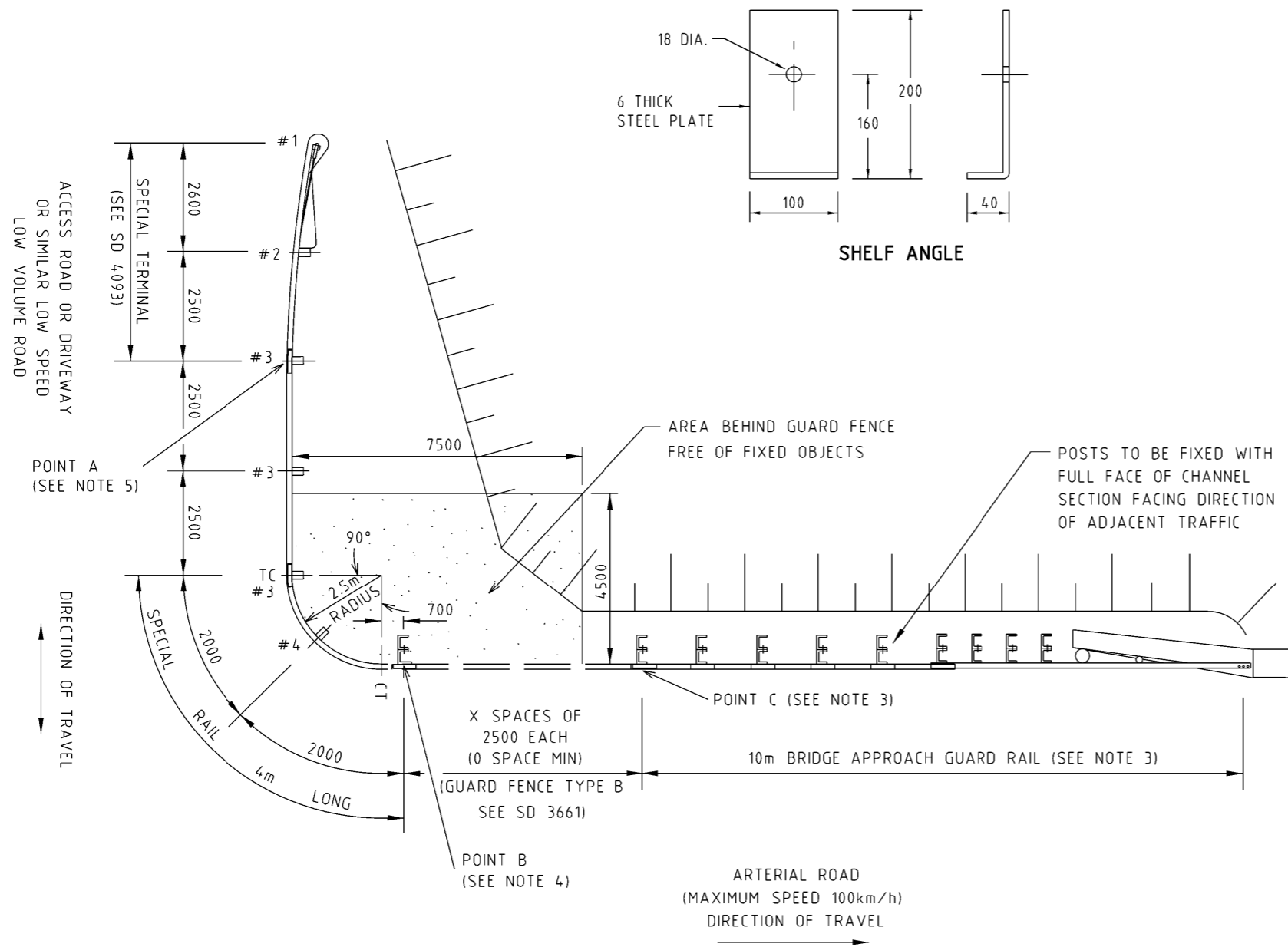


POST TYPE # 4 (SEE NOTES 9,10 AND 11)



NOTES:

1. THIS TREATMENT SHOULD BE USED ONLY AT LOCATIONS WHERE IT IS NOT PRACTICAL TO RELOCATE THE INTERSECTING ROADWAY FURTHER AWAY FROM THE BRIDGE END POST IN ORDER TO ACCOMMODATE THE 10m STANDARD BRIDGE APPROACH GUARDRAIL AND THE BREAKAWAY CABLE TERMINAL (BCTA).
2. THIS TREATMENT SHOULD NOT BE USED WHERE PEOPLE ARE LIKELY TO BE PRESENT IN THE AREA BEHIND THE CURVED GUARDRAIL SECTION BECAUSE THIS AREA IS SUBJECT TO HEAVY FLYING DEBRIS ON IMPACT.
3. THE 10m BRIDGE APPROACH GUARDRAIL STARTS FROM POINT C. ITS LAYOUT DEPENDS ON THE TYPE OF BRIDGE BARRIER USED. FOR DETAILS, REFER TO SD 4081 AND SD 4082.
4. WHERE THERE IS NO BRIDGE ON THE ARTERIAL ROAD, BEGIN THE STANDARD TYPE B GUARD FENCE AT POINT B.
5. IF ADDITIONAL GUARD FENCE IS REQUIRED ON THE ACCESS ROAD OR DRIVEWAY, REPLACE THE SPECIAL TERMINAL WITH STANDARD TYPE B GUARD FENCE AND BEGIN THE STANDARD GUARD FENCE AT POINT A.
6. THE CROSS SLOPE IN FRONT OF THE GUARD FENCE SHALL BE 10 TO 1 OR FLATTER. THE EMBANKMENT SLOPE BEHIND THE GUARD FENCE SHALL NOT BE STEEPER THAN 2 TO 1.
7. REFER TO SD 4091 FOR BOLT SCHEDULE
8. REFER TO SD 4093 FOR DETAILS OF POST TYPES #1 AND #2
9. FOR POST TYPES #3 AND #4 BACKING RAILS ARE NOT REQUIRED FOR INTERMEDIATE POSTS
10. FOR POST TYPE #4, THE RAIL SHOULD REST ON THE SHELF ANGLE. NO CONNECTION OF THE RAIL TO THE POST IS REQUIRED.
11. WHERE THE FACE OF GUARD FENCE IS ERECTED WITHIN 0 TO 1m BEHIND THE BACK OF KERB, THE MOUNTING HEIGHT SHALL BE MEASURED FROM THE ADJACENT ROAD PAVEMENT SURFACE. HOWEVER, THE VERTICAL POSITION OF THE DRILLED HOLES IN THE TIMBER POSTS SHALL BE MEASURED FROM THE GROUND SURFACE.
12. THE CURVED GUARDRAIL SECTION SHALL BE PRE-CURVED BY THE MANUFACTURER.
13. WASHERS AT WOODEN POST NUTS ONLY. NO WASHERS ELSEWHERE.



ISSUE	APP'D	DATE	AMENDMENT
E			
D			
C			
B	D.C.	5/3/12	M16 NUT DETAIL ADDED, OVERSIZE NUT DETAIL AMENDED
A	J.B.	1/8/02	DIMENSION FROM GROUND TO TOP OF BOLT & POST HAS BEEN AMENDED. NOTE 13 ADDED.

GENERAL NOTES
 1. ALL DIMENSIONS ARE IN MILLIMETRES UNLESS SHOWN OTHERWISE
 2. TREATMENT AT INTERSECTIONS NEAR BRIDGES -
 (1) GENERAL LAYOUT
 (2) SPECIAL TERMINAL DETAILS
 (3) POST CAP AND AUXILIARY ANCHOR ASSEMBLY
 3. BREAKAWAY CABLE TERMINAL -
 (1) ANCHOR CABLE AND PLATE DETAILS
 (2) END RAIL AND TERMINAL BULB DETAILS

DESIGNED
 PRINCIPAL ROAD
 DESIGN ENGINEER
 APPROVED
[Signature] 1.2.98
 SD 4091
 SD 4093
 SD 4094
 SD 3551
 SD 3561

wicroads design
 ENGINEERING & TECHNOLOGY CONSULTANTS
 CATALOG: PRED
 PROJECT: sddgnnew
 COMPUTER FILE
 sd-4092b.dgn
 SCALE
 HOR NOT TO SCALE
 VER

STANDARD DRAWING GUARD FENCE			
TREATMENT AT INTERSECTIONS NEAR BRIDGES SPECIAL LAYOUT USING 4m CURVED RAIL			
FILE NO.	CONTRACT NO.	SHEET NO.	DRAWING NO.
			SD 4092
ISSUE			B