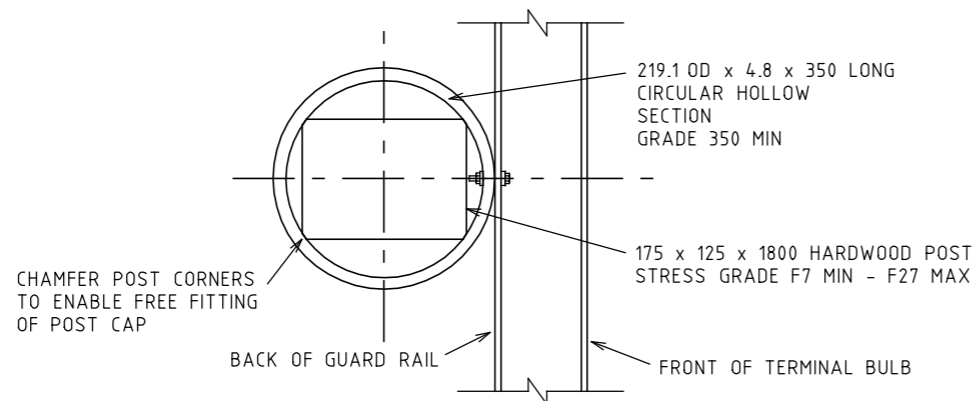


ELEVATION

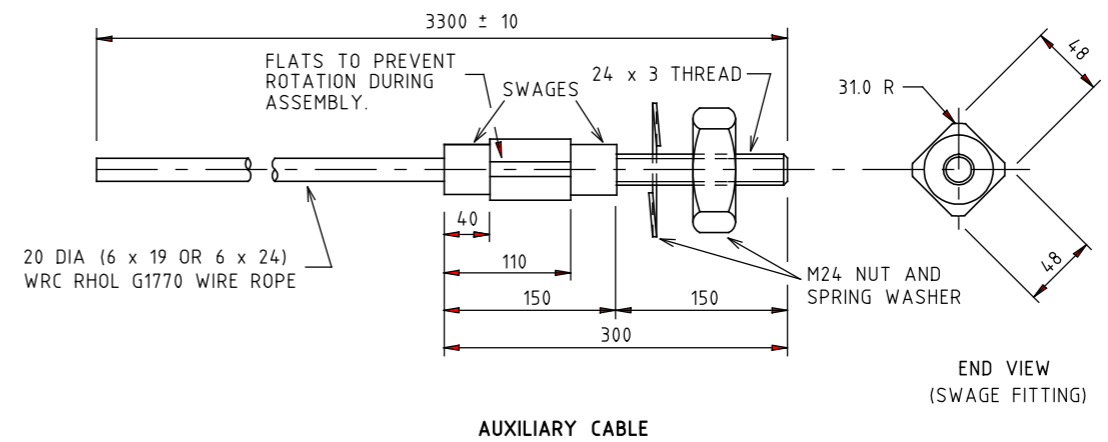


SECTION A-A

POST CAP FOR POST#1

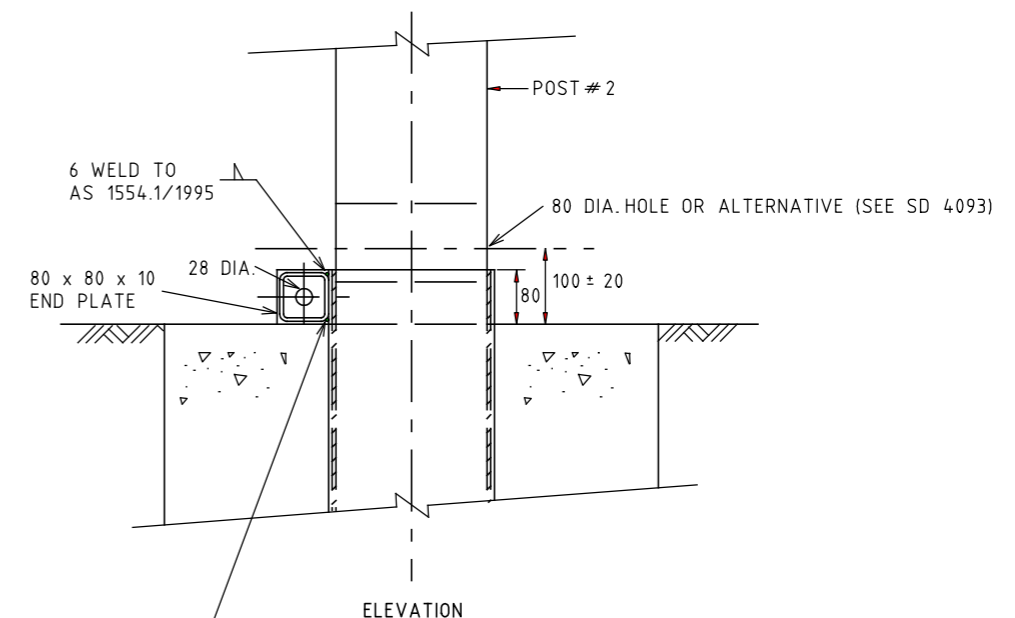
NOTE:

- ATTACH W-BEAM TO POST CAP WITH 1 No. M16 METRIC COARSE HEX HEAD BOLT 30mm LONG THREADED WITH NUT AND 2 STANDARD WASHER. NO CONNECTION TO POST #1 IS REQUIRED.
- THE AUXILIARY ANCHOR ASSEMBLY SHALL BE HOT DIP GALVANISED TO AS 1650/1989 AFTER FABRICATION.
- THE COMPLETE AUXILIARY CABLE AND ANCHOR ASSEMBLY SHALL BE ABLE TO DEVELOP A TENSILE STRENGTH OF 195kN.

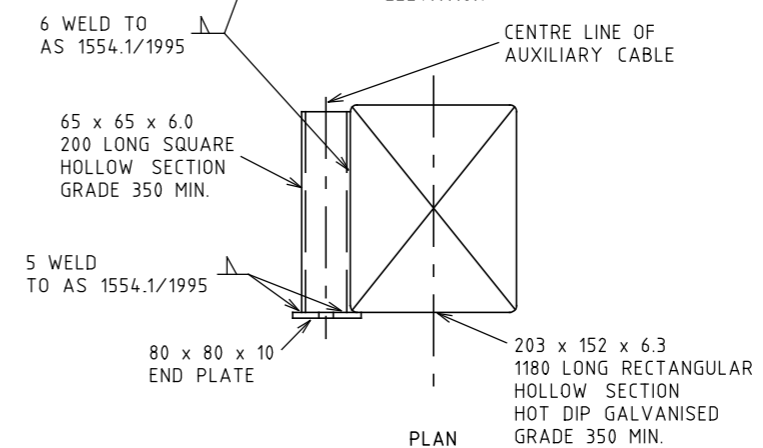


AUXILIARY CABLE

END VIEW (SWAGE FITTING)



ELEVATION



PLAN

AUXILIARY ANCHOR ASSEMBLY FOR POST#2

E			
D			
C			
B			
A			
AMEND.	Appd.	Date	AMENDMENTS

GENERAL NOTES / CROSS REFERENCES	
1. ALL DIMENSIONS ARE IN MILLIMETRES UNLESS SHOWN OTHERWISE.	
2. TREATMENT AT INTERSECTIONS NEAR BRIDGES -	
(1) GENERAL LAYOUT	SD 4091
(2) SPECIAL LAYOUT USING 4m CURVED RAIL	SD 4092
(3) SPECIAL TERMINAL DETAILS	SD 4093
3. BREAKAWAY CABLE TERMINAL -	
(1) ANCHOR CABLE AND PLATE DETAILS	SD 3551
(2) END RAIL AND TERMINAL BULB DETAILS	SD 3561

vicroads

PRINCIPAL
ROAD DESIGN ENGINEER'S
DEPARTMENT

STANDARD DRAWING					
GUARD FENCE					
TREATMENT AT INTERSECTIONS NEAR BRIDGES					
POST CAP AND AUXILIARY ANCHOR ASSEMBLY					
APPROVED	DATE	SPEC. REF. No.	SHEET No.	DRAWING No.	AMENDMENT
<i>J. Cunningham</i>	1.2.98			SD 4094	
PRINCIPAL RD ENGINEER					