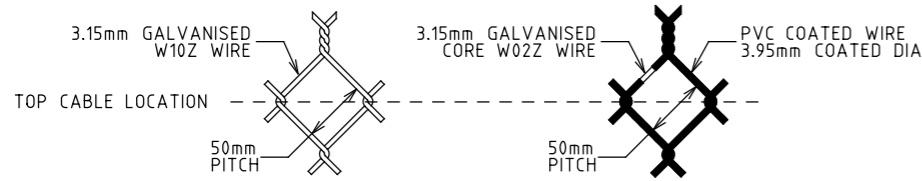
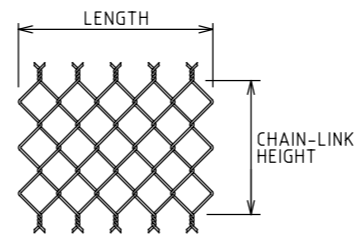


ISSUE	APP'D	DATE	AMENDMENT
B	DC	30-7-13	UPDATED TO INDUSTRY STANDARDS



BARBED SELVEDGE - TOP DETAIL

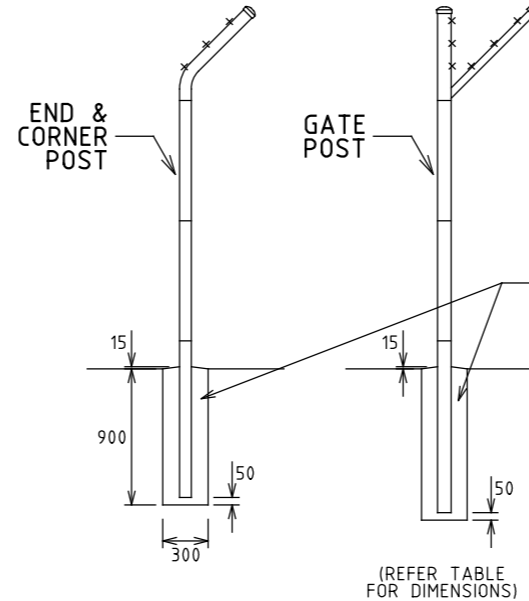
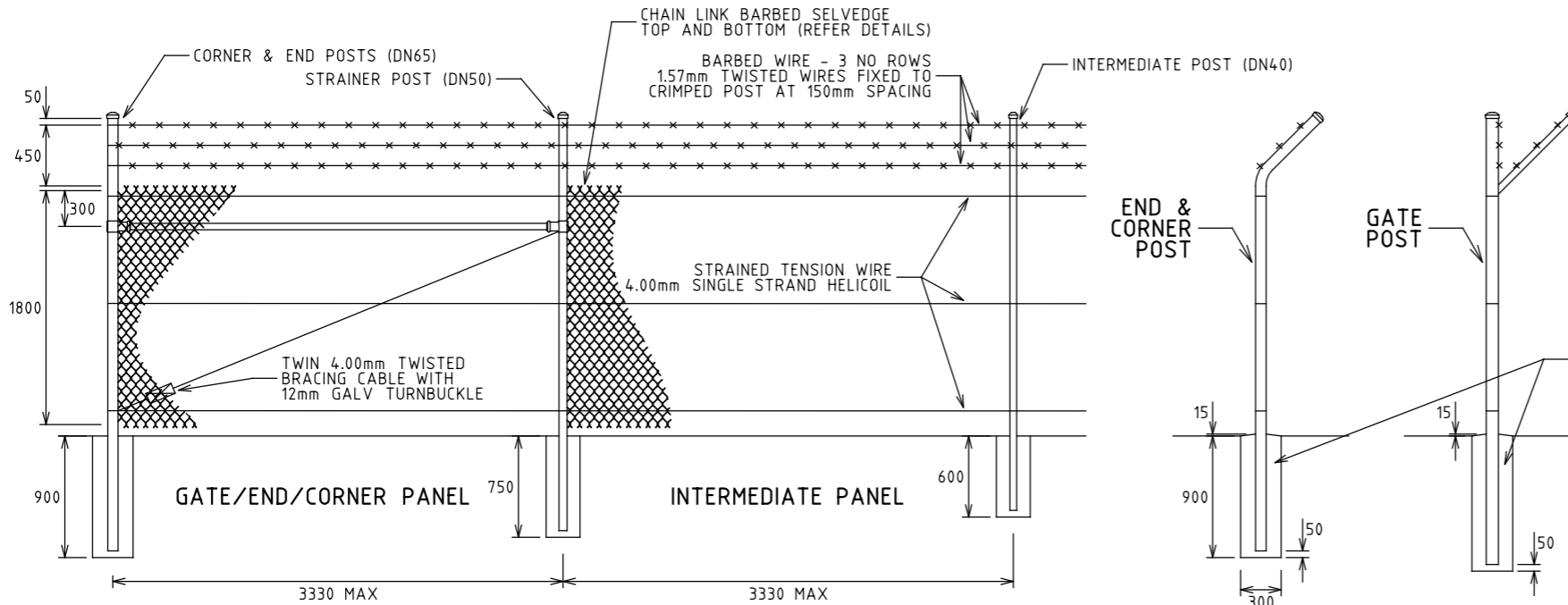


BARBED BARBED FABRIC (BB)

HEAVY DUTY FABRIC - 50mm PITCH x 3.15mm WIRE HEAVY GALVANISED QUALITY (W10Z)
HEAVY DUTY FABRIC - 50mm PITCH x 3.15mm WIRE GALVANISED CORE WIRE (W02Z) WITH PVC COATING

POST TYPE	NOMINAL PIPE SIZE (DN)	PIPE GRADE	OUTSIDE DIA (OD)	MINIMUM WALL THICKNESS	CONCRETE FOOTINGS	
					DIA	DEPTH
GATE POST 3.7m-4.8m LEAF SIZE	DN100	MEDIUM	114.3	4.5	400	1100
GATE POST 1.3m-3.6m LEAF SIZE	DN80	MEDIUM	88.9	4.0	300	1000
GATE POST 1.0m-1.2m LEAF SIZE	DN50	MEDIUM	60.3	3.6	300	900
CORNER & END POSTS	DN65	MEDIUM	76.1	3.6	300	900
INTERMEDIATE STRAINER POST	DN50	MEDIUM	60.3	3.6	250	750
INTERMEDIATE POST	DN40	MEDIUM	48.3	3.2	250	600
BRACING RAILS	DN40	MEDIUM	48.3	3.2		

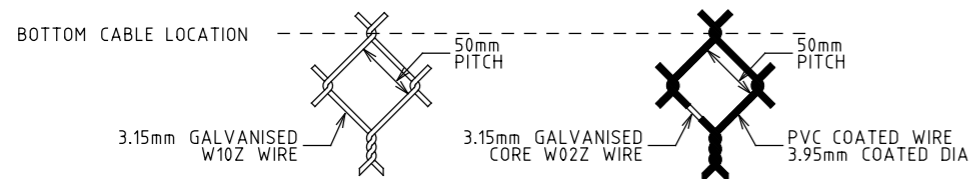
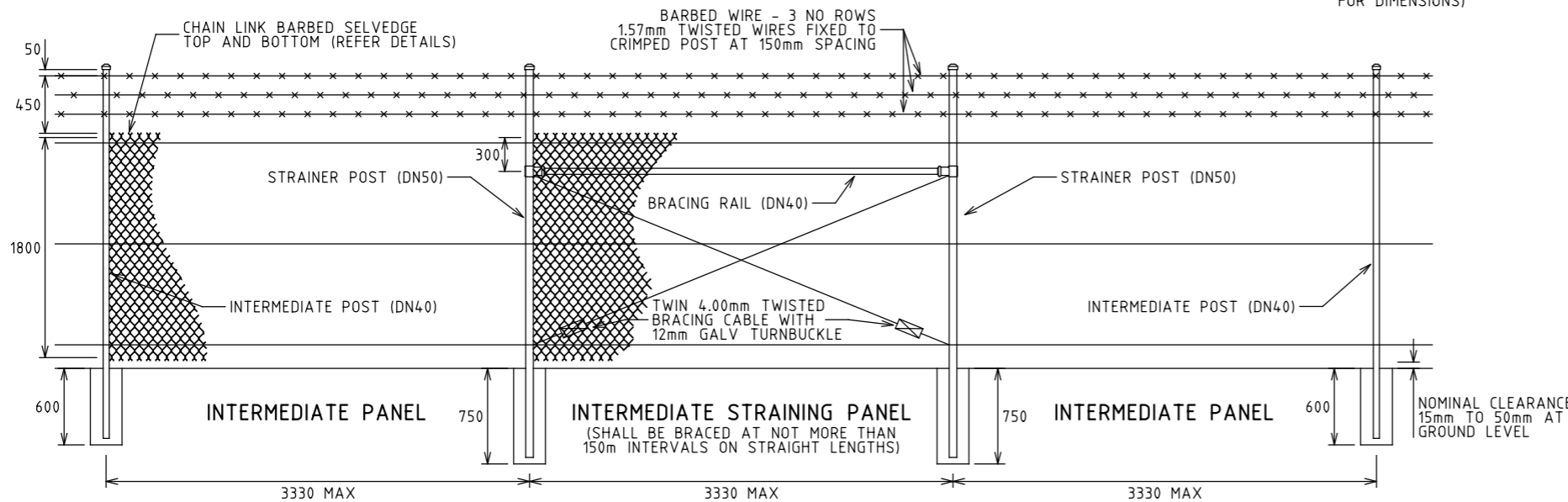
TYPE 'K' FENCE POST AND RAIL DETAILS



OVERSIZE HOLE TO BE COMPLETELY BACKFILLED WITH CONCRETE AND SLOPE NEATLY TROWELLED

NOTES:

- INTERMEDIATE POSTS SHALL BE SPACED AT 3.33m CENTRES
- CRANKED POST TOPS SHALL BE BENT AT 45 DEGREES FITTED WITH GALVANISED CAPS. EXTENSIONS SHALL HAVE PRESSED INDENTATIONS INTO PIPE AT 150mm SPACING TO SECURE BARBED WIRE
- PROVIDE 3 ROWS OF BARBED WIRE TO POST EXTENSIONS WHICH SHALL BE TWIN 1.57mm H/T GALVANISED QUALITY W10Z/HG WITH 2.00mm WIRE CROSS TIED TO PIPE POSTS TO SECURE BARBED WIRE
- ALL END, CORNER AND GATE POSTS SHALL HAVE DN40 BRACING RAIL CLAMPED TO POSTS TOGETHER WITH ONE DIAGONAL TWIN TWIST 4.00mm WIRE PLUS 12mm GALVANISED TURNBUCKLES
- INTERMEDIATE STRAINER PANELS SHALL BE PLACED NOT GREATER THAN 150m ON STRAIGHT FENCE LENGTHS, AND SHALL CONSIST OF 2 x DN50 POSTS WITH 1 x DN40 BRACING RAIL AND 2 x DIAGONAL TWIN TWIST 4.00mm WIRES PLUS 12mm GALVANISED TURNBUCKLES
- PROVIDE 3 ROWS OF SINGLE STRAND 4.00mm CORE WIRE HELICOIL CABLE WIRES TO MATCH CHAIN LINK COATING SECURED TO POSTS WITH 2.00mm WIRE CROSS TIED TO PIPE POSTS
 - TOP CABLE SHALL BE LOCATED ONE HALF DIAMOND FROM TOP OF FABRIC
 - BOTTOM CABLE SHALL BE LOCATED UP ONE FULL DIAMOND FROM BOTTOM OF FABRIC
 - CENTRE CABLE SHALL BE LOCATED MIDWAY BETWEEN TOP AND BOTTOM CABLE WIRES
- CHAIN LINK FABRIC SHALL HAVE TWISTED BARBED SELVEDGE AT TOP AND BOTTOM OF FABRIC
 - FOR GALVANISED CHAIN LINK FABRIC: THE ZINC COATING WIRE QUALITY SHALL BE W10Z/HG FABRIC REQUIRED IS 1800mm HIGH x 50mm PITCH x 3.15mm WIRE (BB) SELVEDGE
 - FOR PVC COATED CHAIN LINK FABRIC: THE ZINC COATING CORE WIRE QUALITY SHALL BE W02Z/SG FABRIC REQUIRED IS 1800mm HIGH x 50mm PITCH x 3.15mm CORE WIRE (BB) SELVEDGE
- NOTE: ALL WIRES USED IN FENCING SHALL MATCH THE COATING QUALITY OF THE CHAIN LINK FABRIC, EXCEPT FOR BARBED WIRE WHICH SHALL REMAIN GALVANIZED TO W10/HG WITH PVC COATED CHAIN LINK
- CHAIN LINK, CABLE WIRES AND BARBED WIRES SHALL BE STRAINED TAUT TO BETWEEN 1.0-1.2kN TENSION
- CHAIN LINK SHALL BE FULLY LACED THROUGH EACH DIAMOND TO ALL END AND GATE POSTS WITH 2.00mm LACING WIRE
- CHAIN LINK SHALL BE ADDITIONALLY SECURED TO INTERMEDIATE POSTS WITH 2 x 2.00mm WIRE TIES PER POSTS LOCATED MIDWAY BETWEEN CABLE WIRES
- SECURE CHAIN LINK TO CABLE WIRES WITH 2.30mm WIRE CLIPS AT MAXIMUM 320mm SPACING (EVERY 4TH DIAMOND) OR TIED WITH 1.57mm SINGLE STRAND TWISTED TIE WIRE
- POWDER COATING OF GALVANISED PIPE WHEN REQUIRED WITH PVC COATED CHAIN LINK FENCING SHALL BE THOROUGHLY PRE-CLEANED AND COMPLY WITH AS4506
- TYPE 'K' SECURITY FENCING AND GATES SHALL COMPLY WITH AS1725-2010-PART 1 IN EVERY OTHER ASPECT



BARBED SELVEDGE - BOTTOM DETAIL

REFERENCES AND NOTES:

- ALL DIMENSIONS ARE IN MILLIMETRES UNLESS OTHERWISE NOTED
- WHERE SPECIFIED A CONCRETE MAINTENANCE STRIP SHALL BE LAID AFTER THE ERECTION OF THE POSTS IN ACCORDANCE WITH VICROADS STANDARD SECTION 711.16
- CONCRETE FOR FENCE POST FOOTINGS SHALL BE A MINIMUM OF 20MPa STRENGTH
- ELECTRICAL INSULATION DETAILS FOR FENCES IN THE VICINITY OF SEC TRANSMISSION LINES AND TOWERS REFER SD3171
- CHAIN WIRE MESH FENCES ARE USUALLY INSTALLED ALONG THE BOUNDARY OF INDUSTRIAL SUB-DIVISIONS OR SECURITY COMPOUNDS TO REPLACE EXISTING CHAIN WIRE FENCING, OR ALONG ROAD RESERVATION BOUNDARY ADJACENT TO RESIDENTIAL AREAS
- PROPERTY OWNERS MAY AGREE TO THE ERECTION OF A STANDARD FENCE OF SIMILAR TYPE TO THE EXISTING FENCE AS AN ALTERNATIVE

TECHNICAL SERVICES

3 PROSPECT HILL ROAD
CAMBERWELL
VICTORIA 3124
PHONE (03) 9811 8355
FAX (03) 9811 8329



FENCE (TYPE K) SD3131

CHAIN WIRE MESH

NOT TO SCALE

APPROVED
1-7-95

Stanning

SD NO.
SD3131

ISSUE
B