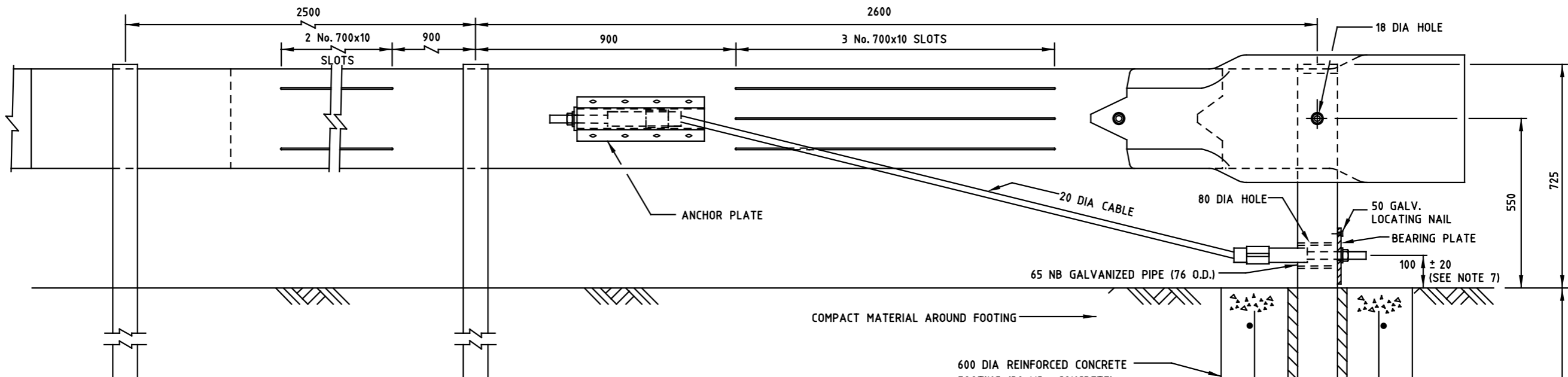
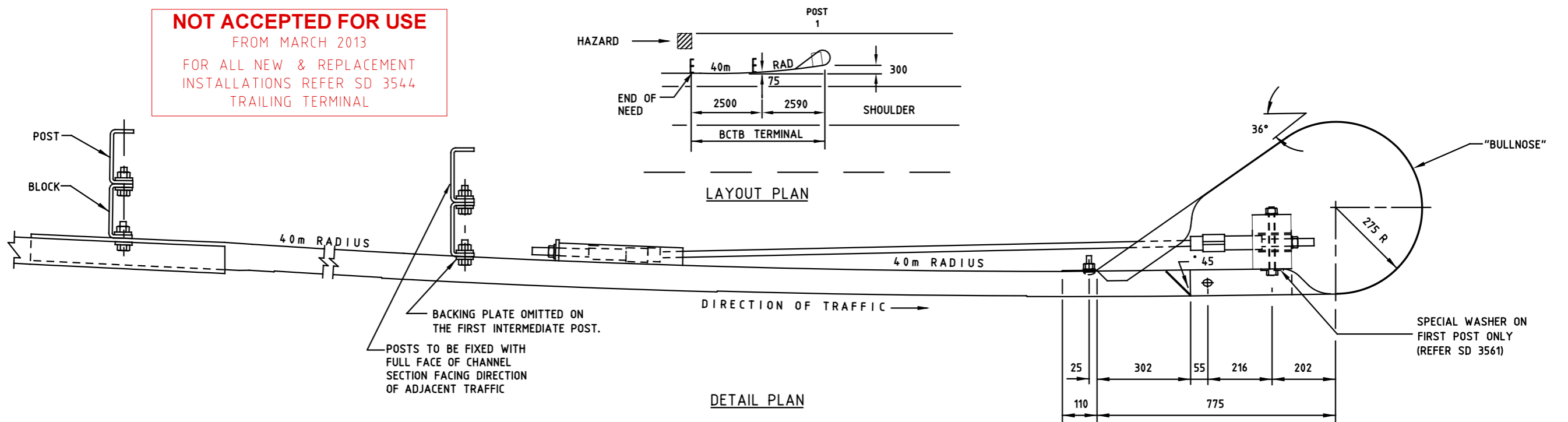


NOT ACCEPTED FOR USE
 FROM MARCH 2013
 FOR ALL NEW & REPLACEMENT
 INSTALLATIONS REFER SD 3544
 TRAILING TERMINAL



NOTES:

1. THE AGREEMENT OF THE PRINCIPAL ROAD DESIGN ENGINEER SHOULD BE SOUGHT BEFORE MODIFICATIONS ARE MADE TO ANY PART OF THE DESIGN.
2. IN REMOTE AREAS WHERE CONCRETE IS NOT READILY AVAILABLE, THE CONCRETE FOOTING CAN BE REPLACED BY A 600 x 600 x 6mm STEEL PLATE BOLTED TO THE FACE OF THE FIRST POST ON THE UPSTREAM SIDE OF POST. (REFER SD 3543)
3. B.C.T. ASSEMBLY TO BE HOT DIP GALVANIZED (INC. NUTS, BOLTS AND WASHERS) TO AS/NZS 4680. HOLES TO BE DRILLED BEFORE GALVANIZING.
4. ALL STEEL POSTS AND BLOCKS SHALL BE 178 x 76 x 6mm STEEL BLOCKS CHANNEL SECTION GRADE 250 MINIMUM.
5. BOLTS TO BE SNUG TIGHTENED TO AS4100.
6. DEPARTURE TERMINALS (BCTB'S) MUST NOT BE LOCATED WITHIN THE CLEAR ZONE OF OPPOSING TRAFFIC (USE A BCTA).
7. WHERE THE FACE OF GUARD FENCE IS ERECTED WITHIN 0 TO 1m BEHIND THE BACK OF KERB, THE MOUNTING HEIGHT SHALL BE MEASURED FROM THE ADJACENT ROAD PAVEMENT SURFACE. HOWEVER, THE VERTICAL POSITION OF THE DRILLED HOLES IN THE TIMBER POSTS SHALL BE MEASURED FROM THE GROUND SURFACE.

BACK VIEW

BOLT SCHEDULE FOR POST 1 OF BCTB

ANCHOR PLATE AND BULB TERMINAL BOLTS	11 No. SPLICE BOLTS WITH OVERSIZE NUTS
POST BOLT	1 No. M16 METRIC COARSE HEX HEAD BOLT 220 LONG THREADED WITH M16 NUT. 1 WASHER + 1 SPECIAL WASHER
ANCHOR CABLE	2 No. M24 NUTS AND CUT WASHERS

- 600 DIA REINFORCED CONCRETE FOOTING (32 MPa CONCRETE) (REFER NOTE 2)
- 500 DIA F52 FABRIC CYLINDER WITH 200 LAP OR WELDED JOINT. CLEAR COVER 50 MIN.
- 125 x 175 x 1800 HARDWOOD POST STRESS GRADE: F7 MIN - F17 MAX TO AS1720.1.
- POST SOCKETS TO BE FORMED USING 12 THICK EXPANDED POLYSTYRENE FOAM SHEETING TO FACILITATE POST REMOVAL.

ISSUE	APP'D	DATE	AMENDMENT
F	D.C.	4/3/13	NOTE ADDED - NOT ACCEPTED FOR USE
E	D.C.	5/3/12	BOLT SCHEDULE ADDED
D	J.K.	1/7/05	NOTE 3 & 5 AMENDED.
C	J.B.	1/8/02	DIMENSION FROM GROUND TO TOP OF BOLT & POST HAS BEEN AMENDED, POST ORIENTATION NOTE ADDED
B	J.B.	10/99	NOTE 2 AMENDED.
A	J.C.	1/7/95	NOTE 7 ADDED.

GENERAL NOTES / CROSS REFERENCES
 1. BREAKAWAY CABLE TERMINAL - ANCHOR CABLE AND PLATE DETAILS SD 3551
 2. BREAKAWAY CABLE TERMINAL - END RAIL AND TERMINAL BULB DETAILS SD 3561
 3. GUARD RAIL TO BE MANUFACTURED FROM BMT 2.7 ± 0.21mm AS/NZS 1594-HA350 STEEL PLATE.
 4. ALL DIMENSIONS ARE IN MILLIMETRES UNLESS SHOWN OTHERWISE.

DESIGNED
 PRINCIPAL ROAD
 DESIGN ENGINEERS
 APPROVED
Ross Green 24-2-94
 CATALOG: PRED
 PROJECT: sddgnnew

ENGINEERING & TECHNOLOGY CONSULTANTS
 COMPUTER FILE sd-3542e.dgn
 SCALE OF METRES
 HOR NOT TO SCALE
 VER

STANDARD DRAWING	
BREAKAWAY CABLE TERMINAL (BCTB)	
GENERAL ARRANGEMENT	
FILE NO.	CONTRACT NO.
SHEET NO.	DRAWING NO.
SD 3542	F