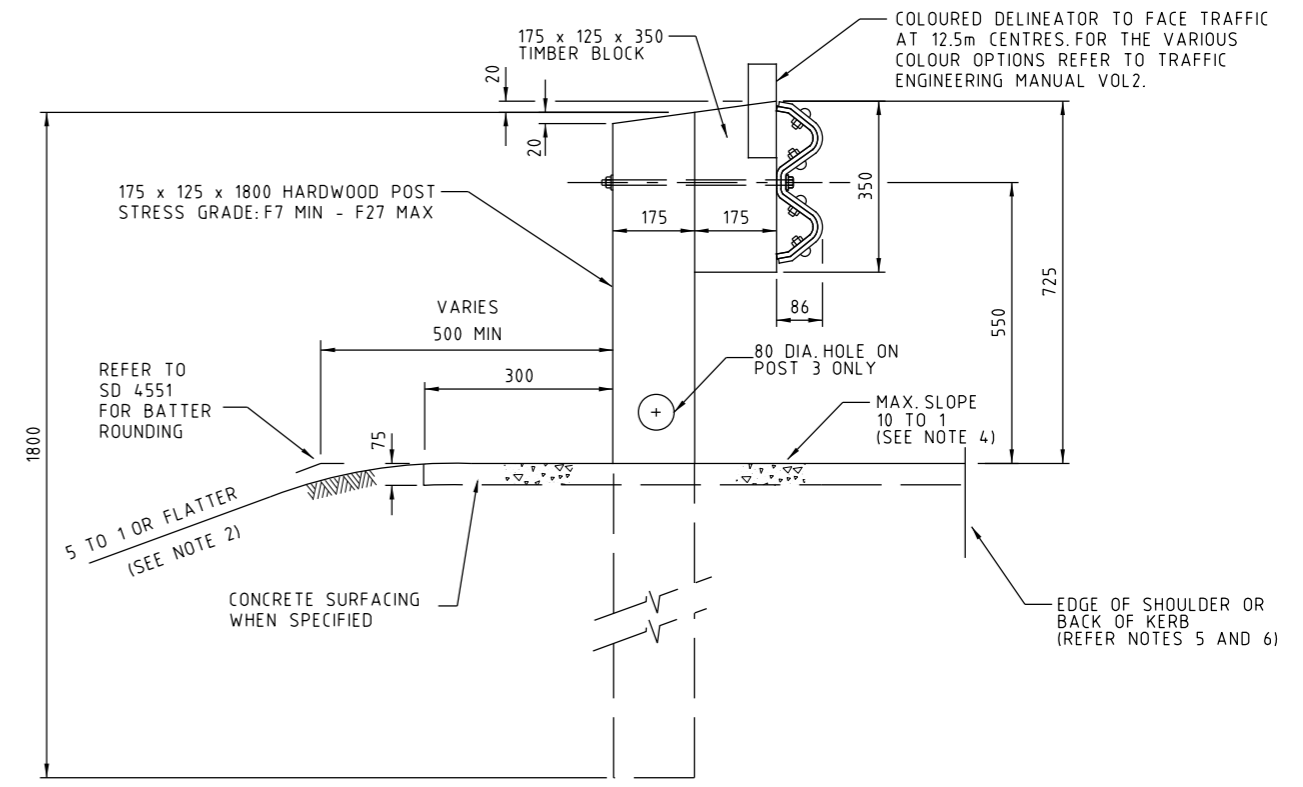
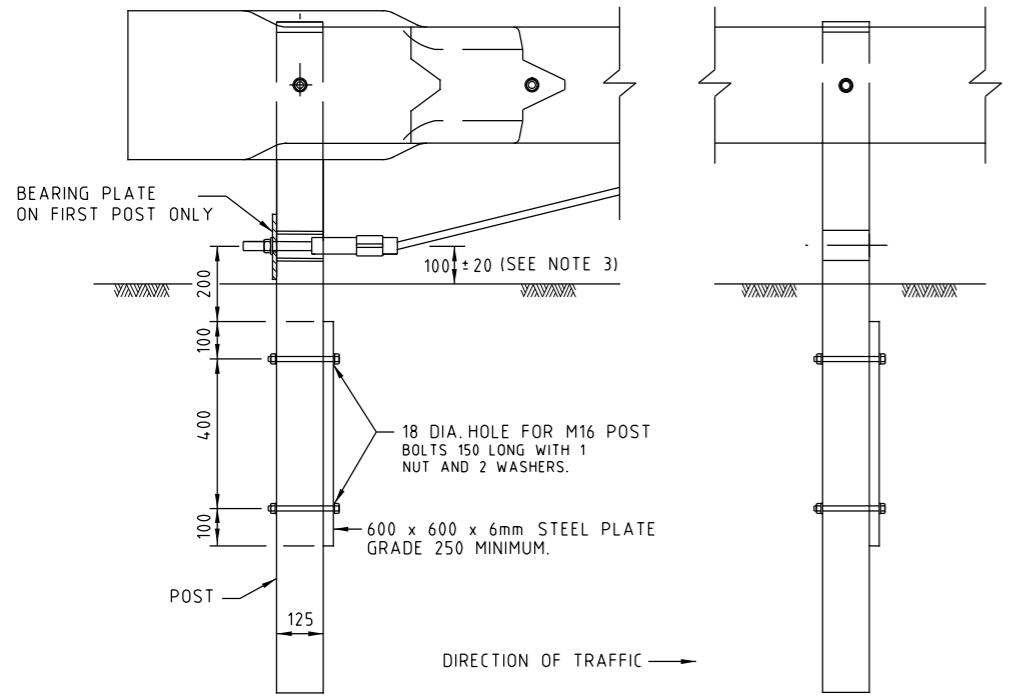


TYPICAL SECTION  
POSTS 1 AND 2



TYPICAL SECTION  
POSTS 3 TO 5

NOTE: DIMENSIONS SHOWN ARE TYPICAL  
OF POSTS 1 THROUGH 5



BREAKAWAY CABLE TERMINAL (BCTA)  
ALTERNATIVE FOOTING FOR POSTS 1 & 2

NOTE: FOR A TWO-WAY TRAFFIC SITUATION THE APPROACH TERMINAL MAY HAVE AN ALTERNATIVE FOOTING IN THE ABSENCE OF CONCRETE. THE STEEL PLATE AT THIS LOCATION MUST BE PLACED ON THE DOWNSTREAM SIDE OF BCT POSTS No. 1 AND 2

**NOT ACCEPTED FOR USE**  
FROM AUGUST 2013  
FOR ALL NEW & REPLACEMENT  
INSTALLATIONS REFER RDN 06-04  
ACCEPTED SAFETY BARRIER PRODUCTS

NOTES:

1. THE ALTERNATIVE FOOTINGS ARE ONLY USED IN AREAS WHERE CONCRETE IS NOT READILY AVAILABLE, OTHERWISE THE CONCRETE FOOTINGS AS SHOWN IN DRAWING Nos. SD 3541 SHOULD BE USED
2. STEEL PLATES, BOLTS, NUTS AND WASHERS SHALL BE HOT DIP GALVANIZED TO AS/NZS 4680. HOLES TO BE DRILLED BEFORE GALVANIZING.
3. WHERE THE FACE OF GUARD FENCE IS ERECTED WITHIN 0 TO 1m BEHIND THE BACK OF KERB, THE MOUNTING HEIGHT SHALL BE MEASURED FROM THE ADJACENT ROAD PAVEMENT SURFACE. HOWEVER, THE VERTICAL POSITION OF THE DRILLED HOLES IN THE TIMBER POSTS SHALL BE MEASURED FROM THE GROUND SURFACE.
4. DESIRABLY, THE CROSS SLOPE OF THE GRADING APPROACHING THE GUARDRAIL TERMINAL AND ADJACENT TO IT FOR ITS FULL LENGTH SHOULD BE 10 TO 1. HOWEVER, IF THE EXISTING CROSS SLOPE IS FLAT OR IS A POSITIVE SLOPE DUE TO THE SUPERELEVATION OF THE ROADWAY PAVEMENT, THE MINIMUM OFFSET OF THE GRADING HINGE POINT BEHIND POSTS No. 1 THROUGH 5 IS ESSENTIAL TO PREVENT SNAGGING OF THE VEHICLE.
5. IN HIGH SPEED AREAS IT IS PREFERABLE NOT TO USE KERB IN CONJUNCTION WITH GUARD FENCE. IN LOW SPEED AREAS BARRIER KERBING MAY BE USED TO DEFLECT VEHICLES APPROACHING THE GUARD FENCE.
6. FOR LOCATION GUIDELINES FOR KERB AND GUARD FENCE COMBINATIONS, REFER TO STANDARD DRAWING SD 3502.

ISSUE	APP'D	DATE	AMENDMENT
E	D.C.	8/5/14	NOTE ADDED - NOT ACCEPTED FOR USE
D	D.C.	4/3/13	BCTB FOOTING OPTION REMOVED
C	D.C.	5/3/12	POST DIMENSIONS ADDED, NOTES 5 AND 6 ADDED
B	J.B.	1/8/02	TYPICAL BCTA POSTS AND FOOTINGS ADDED. NOTES ADDED FOR FOOTINGS FOR BOTH POSTS 1 AND 2
A	J.C.	1/7/95	NOTE 3 ADDED

GENERAL NOTES	
1.	BREAKAWAY CABLE TERMINAL (BCTA) - GENERAL ARRANGEMENT SD 3541
2.	ALL DIMENSIONS ARE IN MILLIMETRES UNLESS SHOWN OTHERWISE

DESIGNED PRINCIPAL ROAD DESIGN ENGINEER	
APPROVED <i>Ross Gordon</i> 24.2.94	
CATALOG: PRED	COMPUTER FILE
PROJECT: sddgnnew	sd-3543c.dgn

ENGINEERING & TECHNOLOGY CONSULTANTS

SCALE: NOT TO SCALE

HOR VER

STANDARD DRAWING POST DETAIL AND BREAKAWAY CABLE TERMINAL ALTERNATIVE FOOTINGS			
FILE NO.	CONTRACT NO.	SHEET NO.	DRAWING NO.
			SD 3543
			ISSUE E