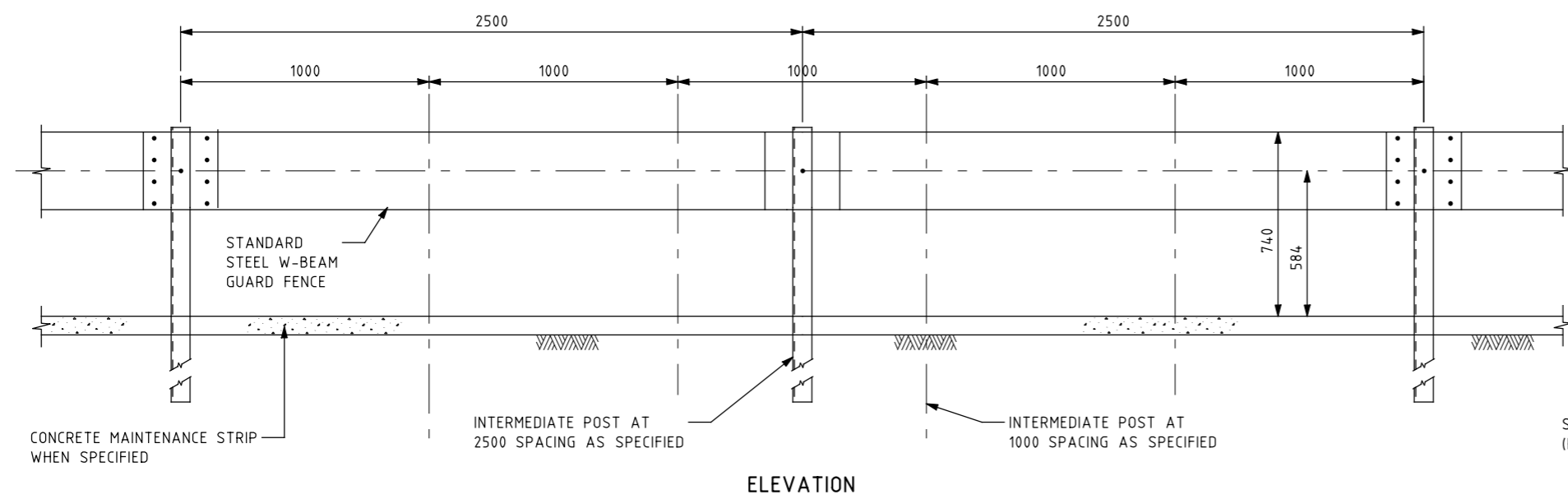
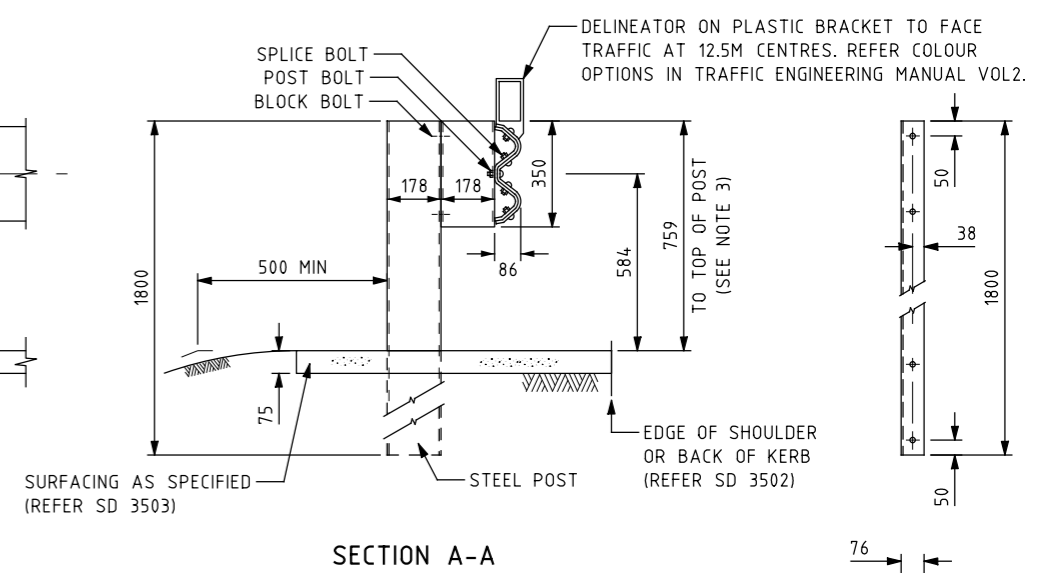


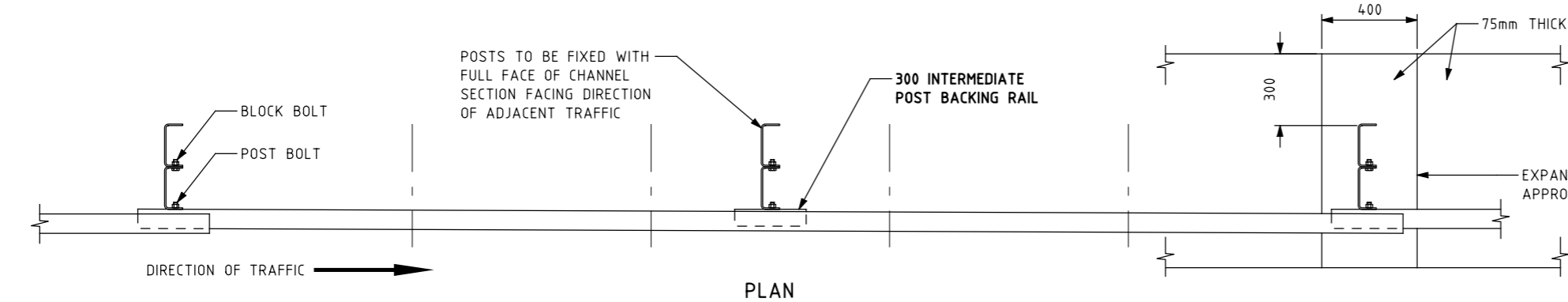
ISSUE	APP'D	DATE	AMENDMENT
I	D.C	05/14	TITLE BLOCK, SCALE, HEIGHT OF BARRIER



ELEVATION

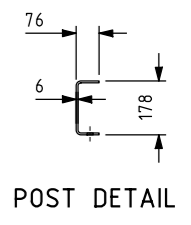


SECTION A-A

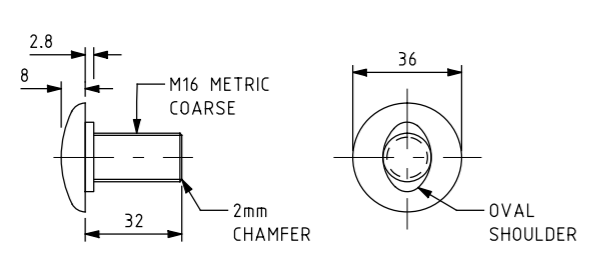


PLAN

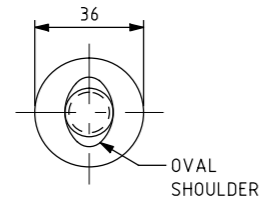
DETAIL OF CONCRETE MAINTENANCE STRIP AROUND POST



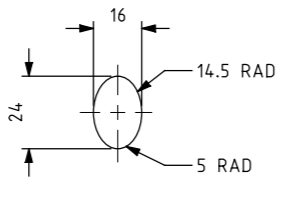
POST DETAIL



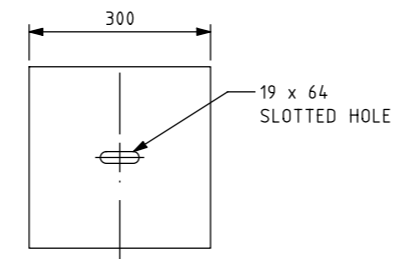
SPLICE BOLT



OVAL SHOULDER

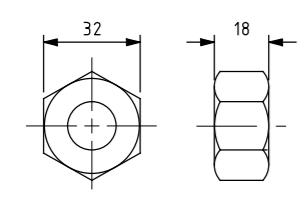


INTERMEDIATE POST BACKING RAIL (W-BEAM PROFILE)

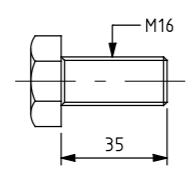


MAIN POST	
	1 POST BOLT
	2 BLOCK BOLTS
	8 SPLICE BOLTS
	8 OVERSIZE NUTS
	3 M16 NUTS
INTERMEDIATE POST	
	1 POST BOLT
	2 BLOCK BOLTS
	3 M16 NUTS
	1 BACKING RAIL

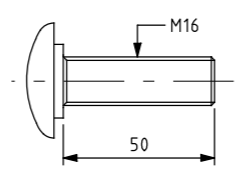
BOLT SCHEDULE



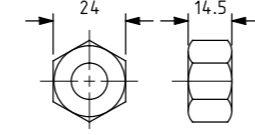
OVER SIZE NUT (SPLICE BOLT)



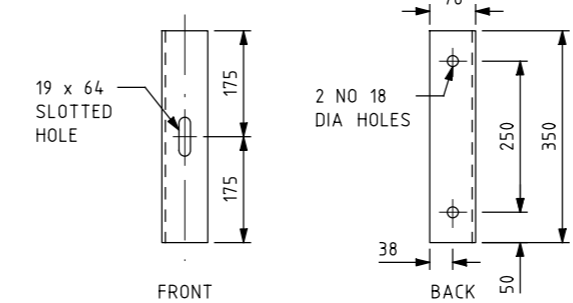
BLOCK BOLT



POST BOLT



M16 NUT



BLOCK DETAIL

NOTES:

- IN HIGH SPEED AREAS, IT IS PREFERABLE NOT TO USE KERB IN CONJUNCTION WITH GUARD FENCE. IN VERY LOW SPEED AREAS BARRIER KERBING MAY BE USED TO DEFLECT VEHICLES APPROACHING THE GUARD FENCE. REFER SD 3502.
- CLEARANCE FROM FACE OF W-BEAM TO UNYIELDING HAZARDS FOR A POST SPACING OF 2.5m SHALL BE AT LEAST 1m. POST SPACING IS TO BE REDUCED TO 1m WHERE CLEARANCE TO AN UNYIELDING HAZARD IS 1m-0.5m. REDUCED POST SPACING SHALL EXTEND AT LEAST 10m EITHER SIDE OF THE HAZARD AREA.
- WHERE THE FACE OF W-BEAM IS ERECTED WITHIN 0 TO 1m BEHIND THE BACK OF KERB, THE MOUNTING HEIGHT SHALL BE MEASURED FROM THE LIP OF KERB. WHEN LOCATED WITHIN 1.5m FROM EDGE OF CARRIGEWAY WITHOUT KERB (TYPICALLY EDGE LINE), THE MOUNTING HEIGHT SHALL BE MEASURED FROM EDGE OF CARRIGEWAY. FOR DISTANCES BEYOND THIS, THE MOUNTING HEIGHT SHALL BE MEASURED FROM NOMINAL GROUND SURFACE DIRECTLY BELOW W-BEAM RAIL.
- PAVEMENT DRAINS SHALL BE LOCATED CLEAR OF AREAS AFFECTED BY GUARD FENCE POSTS.
- ALL POSTS AND BLOCKS SHALL BE 178 x 76 x 6mm COLD ROLLED STEEL CHANNEL SECTION GRADE 250 MIN.
- ALL POSTS, BLOCKS, NUTS & BOLTS SHALL BE HOT DIP GALVANIZED TO AS/NZS 4680. HOLES TO BE DRILLED BEFORE GALVANIZING.
- BOLTS TO BE SNUG TIGHTENED TO AS 4100.
- BOLTS AND NUTS SHALL BE OF THE FOLLOWING CLASSES: POST BOLT & BLOCK BOLT CLASS 4.6. M16 NUT CLASS 5 AND SPLICE BOLT & OVERSIZE M16 NUT CLASS 8.8.
- WASHERS ARE NOT TO BE PROVIDED.

- REFERENCES AND NOTES:
- ALL DIMENSIONS ARE IN MILLIMETRES UNLESS SHOWN OTHERWISE.
 - GUARD FENCE TO BE MANUFACTURED IN ACCORDANCE WITH VICROADS STANDARD SECTION 708.
 - SAFETY BARRIER TERMINOLOGY, SHORTHAND AND GENERAL REQUIREMENTS SHALL BE IN ACCORDANCE WITH SD 3500.

AS 4100 STEEL STRUCTURES
AS/NZS 4680 HOT-DIP GALVANIZED COATINGS ON...
RDN 06-04 ACCEPTED SAFETY BARRIER PRODUCTS
RDN 06-08 THE USE OF GUARD FENCE
SD 3501 GUARD FENCE LOCATION PROCEDURE
SD 3502 BARRIER OFFSET GUIDELINES
SD 3503 CONCRETE MAINTENANCE STRIPS
VICROAD STANDARD SECTION 708 - STEEL GUARD FENCE

TECHNICAL SERVICES
3 PROSPECT HILL ROAD
CAMBERWELL
VICTORIA 3124
PHONE (03) 9811 8355
FAX (03) 9811 8329



ROAD SAFETY BARRIERS
GUARD FENCE (TYPE B)
ARRANGEMENT DETAIL

NOT TO SCALE	APPROVED R.GORDON	SD NO. 1/10/93	ISSUE SD 3661 I
--------------	----------------------	-------------------	-----------------------

VicRoads Drawing No. 720279