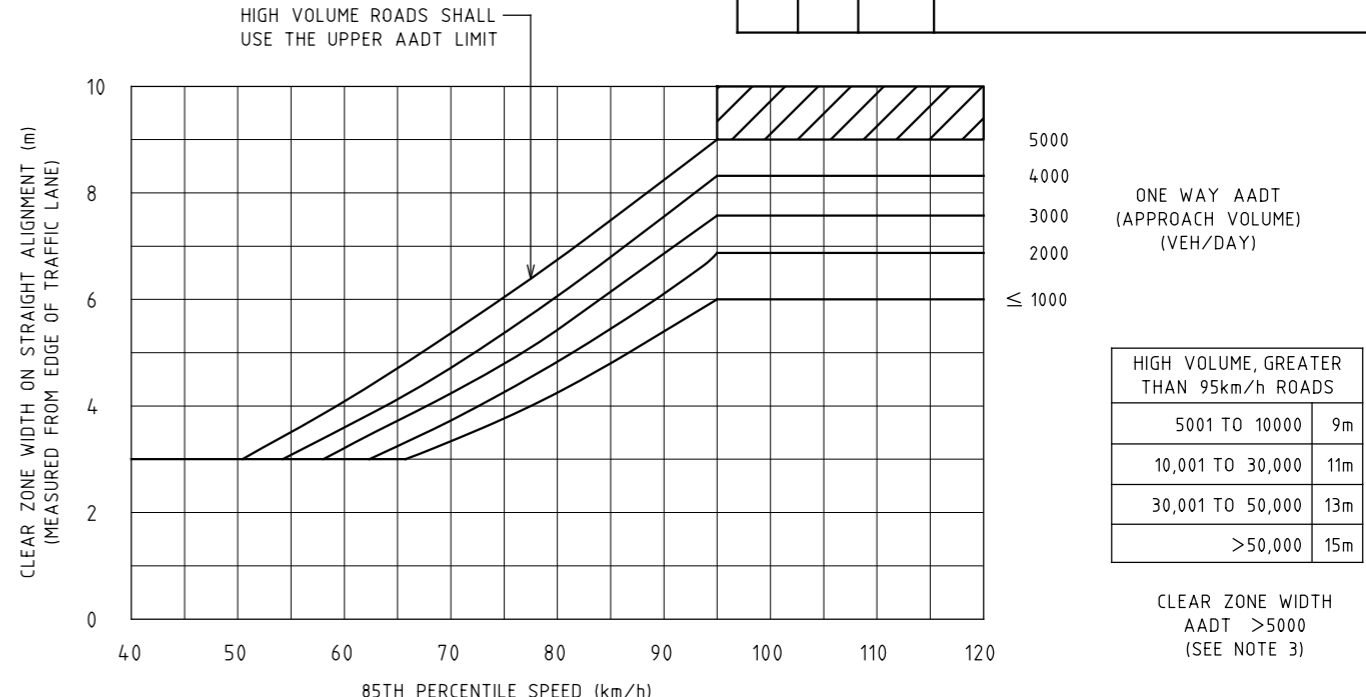
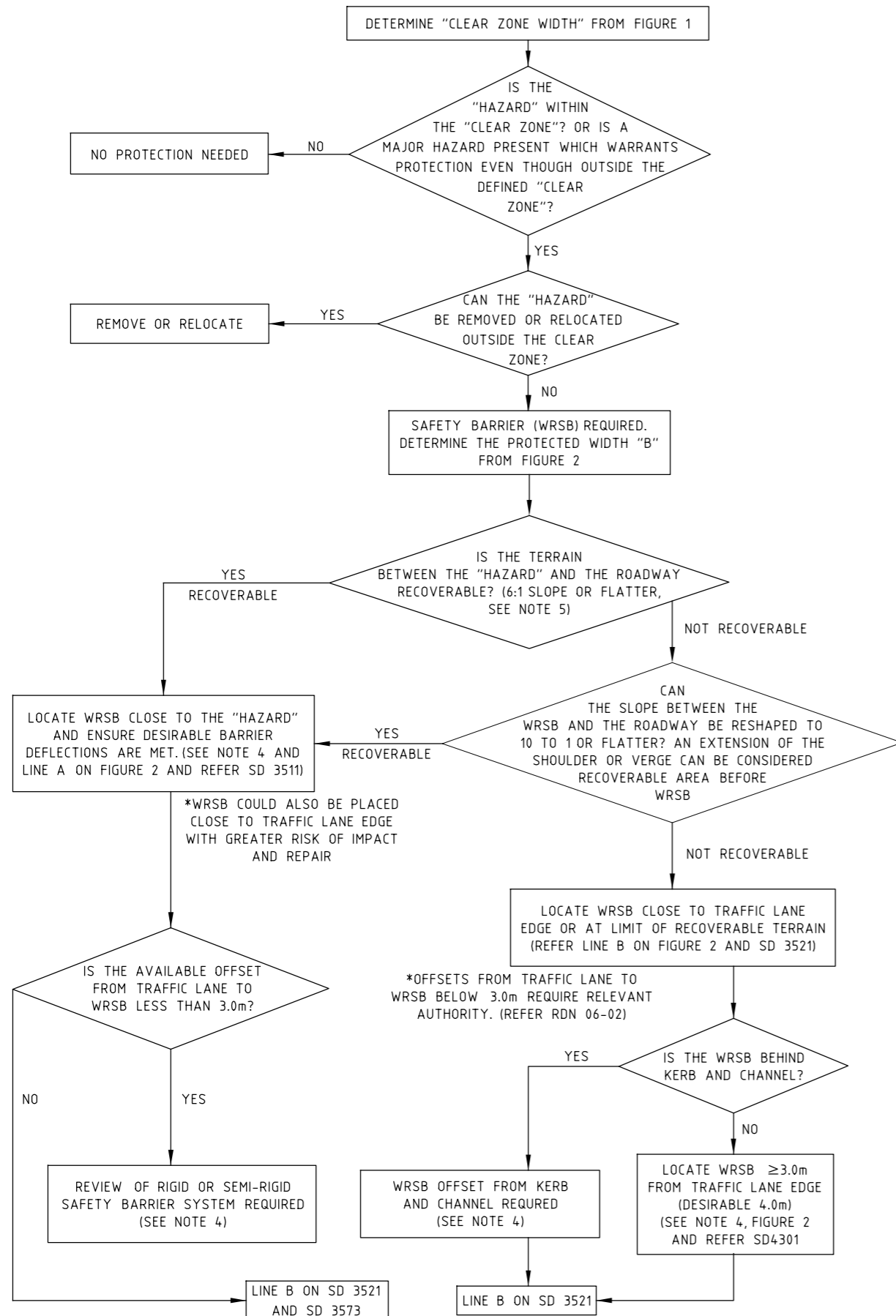
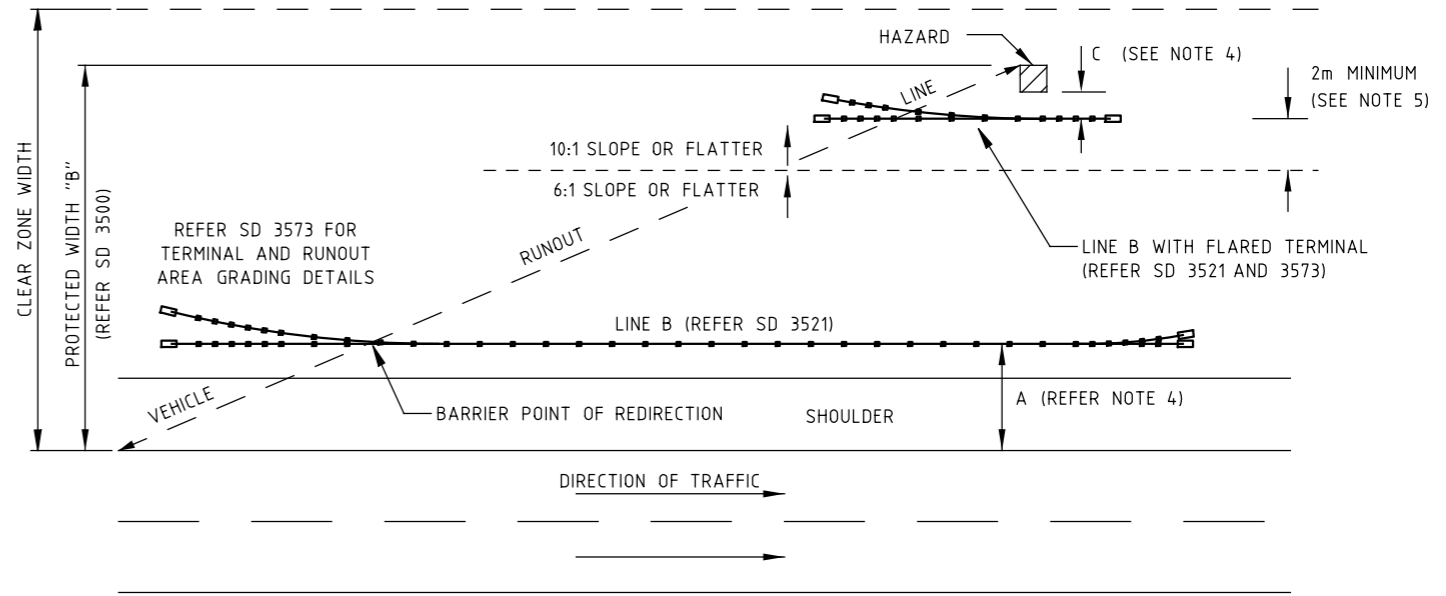


ISSUE	APP'D	DATE	AMENDMENT

LOCATION PROCEDURE



CLEAR ZONE WIDTH AADT > 5000 - FIGURE 1 (SEE NOTE 3)



WIRE ROPE SAFETY BARRIER LOCATIONS - FIGURE 2 (SEE NOTE 5)

- NOTES:
- WHERE POSSIBLE, MINIMISE WRSB LENGTH BY USING LINE B WITH THE MAXIMUM OFFSET AND FLARE FROM THE ROAD. REFER SD 3573.
 - SAFETY BARRIER TERMINOLOGY, SHORTHAND AND GENERAL REQUIREMENTS SHALL BE IN ACCORDANCE WITH SD 3500.
 - THE CLEAR ZONE WIDTH IN FIGURE 1 SHALL BE ADJUSTED FOR CURVES AND BATTERS ACCORDING TO THE METHOD SPECIFIED ON AGRD- PART 6, SECTION 4.2.2.
 - CLEARANCE "C", OFFSET "A" AND OFFSET FROM KERB OR SHOULDER SHALL BE DETERMINED IN ACCORDANCE WITH ROAD DESIGN NOTE 06-02 AND SD 3502.
 - AN OBSTACLE-FREE AREA AT LEAST 2m WIDE WITH A SLOPE NOT STEEPER THAN 10 TO 1 SHALL BE PROVIDED IN FRONT OF WRSB (REFER FIGURE 2). IDEALLY THIS FLAT AREA SHOULD COVER THE FULL WIDTH FROM EDGE OF VERGE TO WRSB.
 - FOR VERGE SLOPE AND WIDTH REQUIREMENTS REFER TO:
 - AGRD PART 3, SECTION 4.4 AND PART 6, SECTION 6.3.6 AND 6.3.7.
 - VICROADS RDN 06-02 SECTION 4.2.4(a) AND (b).
 - MANUFACTURER'S GUIDELINES.

VicRoads Drawing No. 720281

- REFERENCES AND NOTES:
- ALL DIMENSIONS ARE IN MILLIMETRES UNLESS SHOWN OTHERWISE.
 - SAFETY BARRIER SHALL BE VICROADS ACCEPTED PRODUCTS IN ACCORDANCE WITH RDN 06-04.

- SD 3500 TERMINOLOGY, SHORTHAND AND GENERAL REQUIREMENTS
- SD 3502 BARRIER LOCATION RELATIVE TO KERB AND SHOULDER
- SD 3511 SAFETY BARRIER LINE A ALIGNMENT DETAILS
- SD 3521 SAFETY BARRIER LINE B ALIGNMENT DETAILS
- SD 3573 WRSB FLARED TERMINAL DETAILS
- RDN 06-02 ROAD DESIGN NOTE- USE OF WRSB
- RDN 06-04 VICROADS ACCEPTED SAFETY BARRIER PRODUCTS
- AGRD AUSTRROADS GUIDE TO ROAD DESIGN PART 6

TECHNICAL SERVICES
 3 PROSPECT HILL ROAD
 CAMBERWELL
 VICTORIA 3124
 PHONE (03) 9811 8355
 FAX (03) 9811 8329



ROAD SAFETY BARRIERS WIRE ROPE SAFETY BARRIER LOCATION PROCEDURE

NOT TO SCALE	APPROVED D.CASSAR	SD NO. 8/5/14 SD 4311	ISSUE
--------------	----------------------	-----------------------------	-------